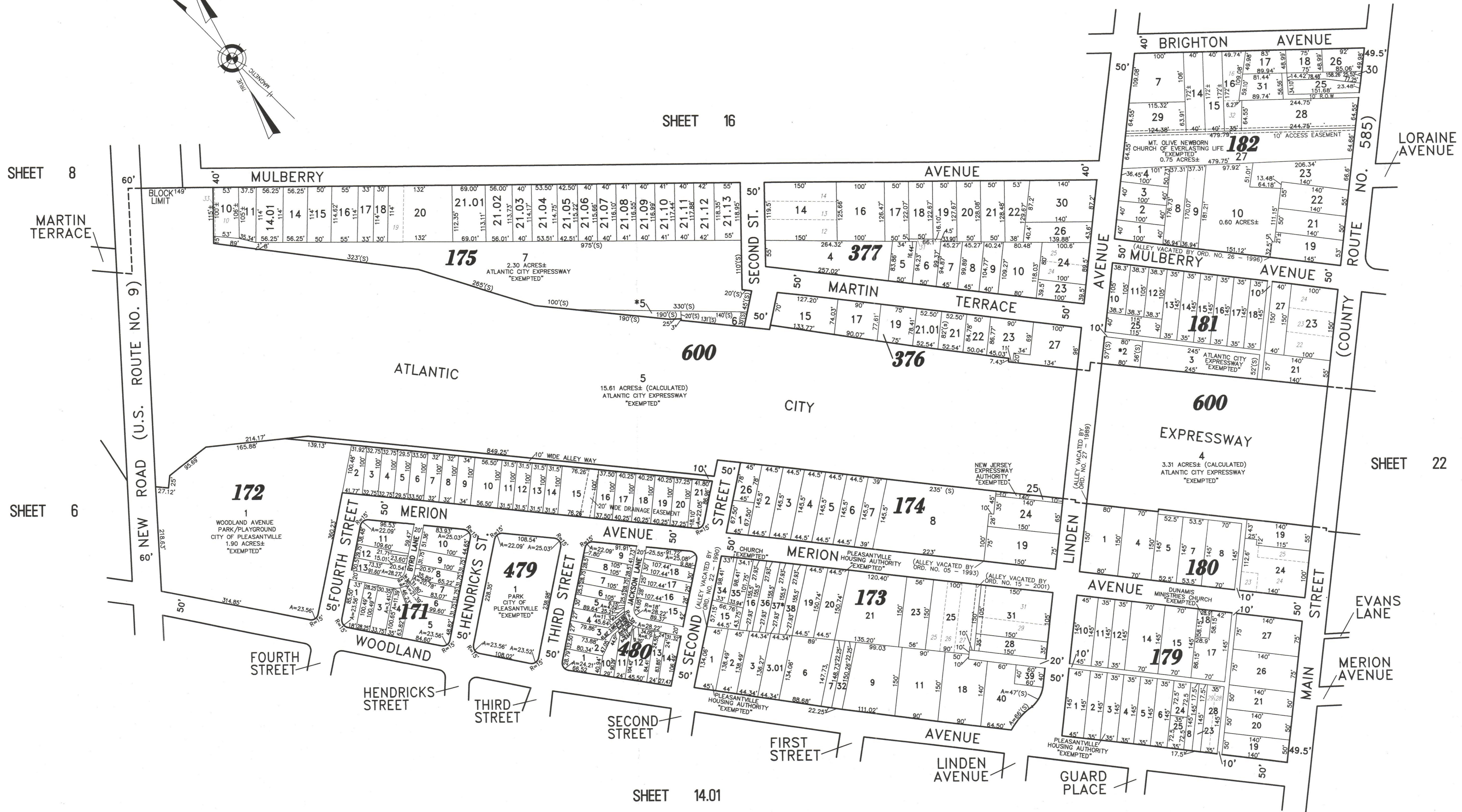
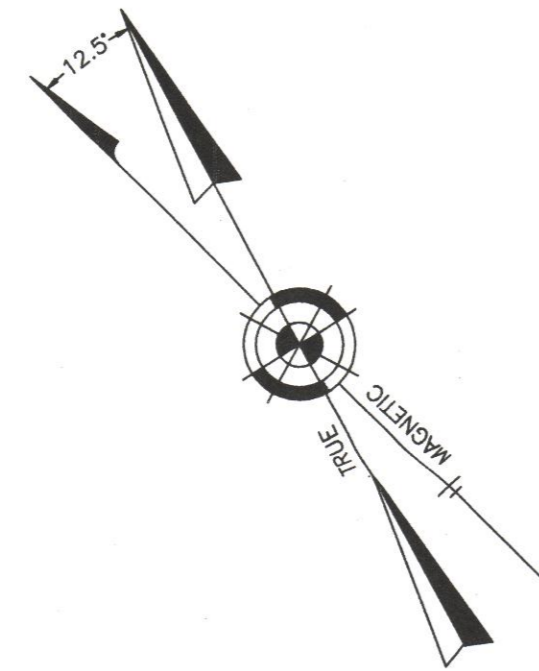


SHEET 16

SHEET 8

SHEET 6

REVISED BY REMINGTON AND VERNICK ENGINEERS - 2-21-2007 - 01197431



SHEET 14.01

SHEET 22

\*NOTE: "EXEMPTED" CITY OF PLEASANTVILLE - TEMPORARY PROPERTY FORECLOSURE

NEW JERSEY DEPARTMENT OF THE TREASURY  
 DIVISION OF TAXATION  
 PROPERTY ADMINISTRATION  
 APPROVED AS A TAX MAP PURSUANT TO THE AUTHORITY OF  
 N.J.S.A. 54:1-15 & 54:2B-3  
 FOR THE DISTRICT CLERK OF TAXATION  
 THOMAS J. PELLER, CHIEF, LOCAL PROPERTY, FIELD ASSISTANCE  
 DATE: OCT 16 2007 SERIAL NO. 914

### TAX MAP CITY OF PLEASANTVILLE

ATLANTIC COUNTY NEW JERSEY  
SCALE: 1" = 100' DATE: 6-17-2003

CRAIG F. REMINGTON LAND SURVEYOR LIC. NO. 23924

REMINGTON, VERNICK & WALBERG ENGINEERS  
 845 N. MAIN STREET, PLEASANTVILLE, NJ 08232  
 (609) 645-7100 FAX (609) 645-7076  
 WEB SITE ADDRESS: WWW.RVW.COM