

BLOCK 193, LOT 1
THREE STORY BUILDING

C0110 C0410 C0210 C0510	C0112 C0412 C0212 C0512	C0122 C0422 C0222 C0522	C0124 C0424 C0224 C0524
C0108 C0408 C0208 C0508	C0109 C0409 C0209 C0509	C0111 C0411 C0211 C0511	C0113 C0413 C0213 C0513
C0102 C0402 C0202 C0502	C0104 C0404 C0204 C0504	C0106 C0406 C0206 C0506	C0108 C0408 C0208 C0508
C0101 C0401 C0201 C0501	C0103 C0403 C0203 C0503	C0105 C0405 C0205 C0505	C0107 C0407 C0207 C0507

3 FLOOR
2 FLOOR
1 FLOOR

TYPICAL UNIT
1019 SF.

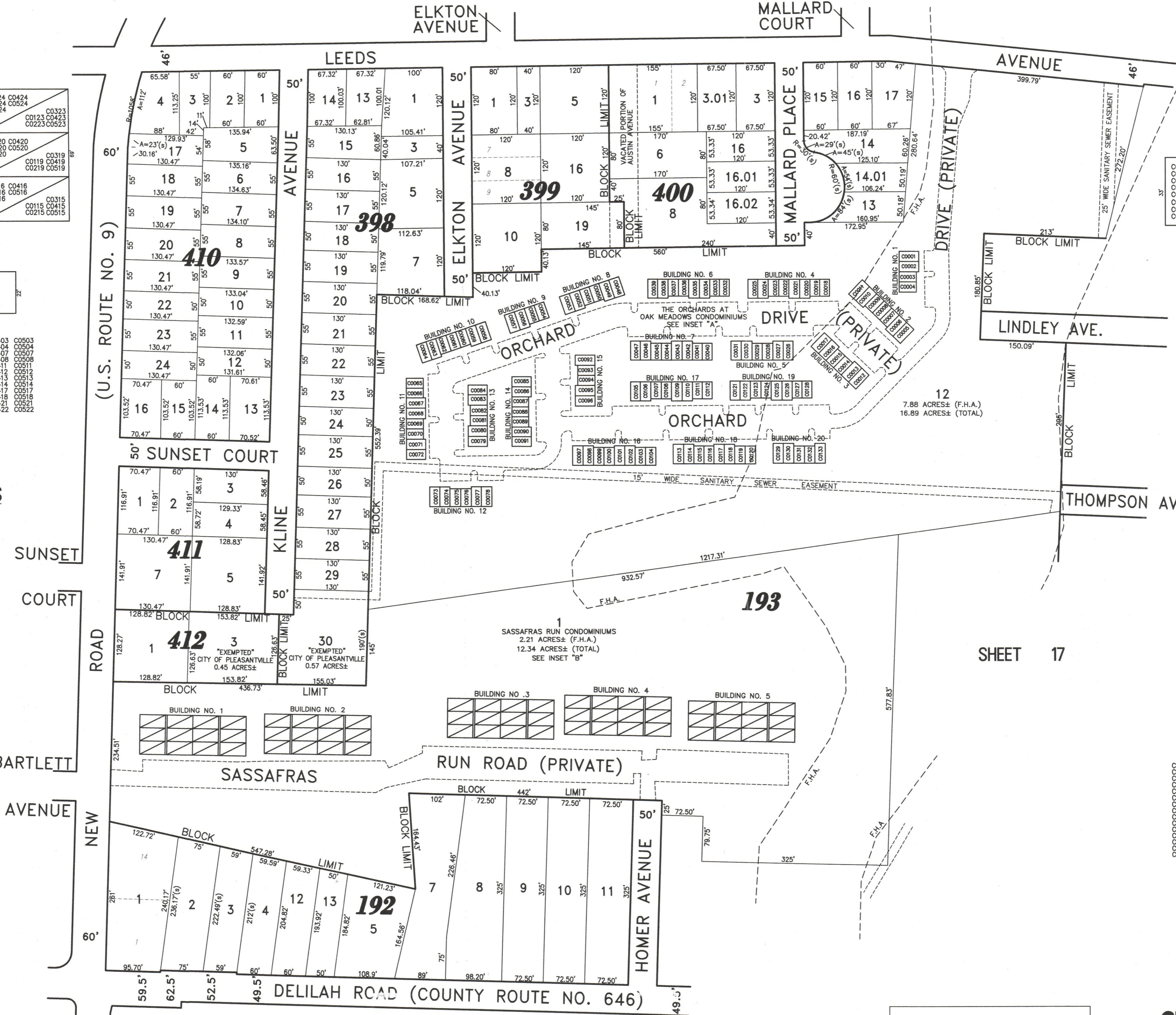
TYPICAL UNIT
1005 SF.

C0101 C0201 C0301 C0401 C0501
C0102 C0202 C0302 C0402 C0502
C0103 C0203 C0303 C0403 C0503
C0104 C0204 C0304 C0404 C0504
C0105 C0205 C0305 C0405 C0505
C0106 C0206 C0306 C0406 C0506
C0107 C0207 C0307 C0407 C0507
C0108 C0208 C0308 C0408 C0508
C0109 C0209 C0309 C0409 C0509
C0110 C0210 C0310 C0410 C0510
C0111 C0211 C0311 C0411 C0511
C0112 C0212 C0312 C0412 C0512
C0113 C0213 C0313 C0413 C0513
C0114 C0214 C0314 C0414 C0514
C0115 C0215 C0315 C0415 C0515
C0116 C0216 C0316 C0416 C0516
C0117 C0217 C0317 C0417 C0517
C0118 C0218 C0318 C0418 C0518
C0119 C0219 C0319 C0419 C0519
C0120 C0220 C0320 C0420 C0520
C0121 C0221 C0321 C0421 C0521
C0122 C0222 C0322 C0422 C0522
C0123 C0223 C0323 C0423 C0523
C0124 C0224 C0324 C0424 C0524

NOTE: 1. DIMENSIONS AND SQUARE FOOTAGE ARE TYPICAL FOR ALL SIMILAR UNITS

SASSAFRAS RUN CONDOMINIUMS
3 STORY CONDOS
INSET "B"

SHEET 9



SHEET 16

SHEET 17

BLOCK 193, LOT 12
BUILDINGS 4, 6, 7, 11, 16, 17, 18, & 19

C0018	C0019	C0020	C0021	C0022	C0023	C0024	C0025
C0032	C0033	C0034	C0035	C0036	C0037	C0038	C0039
C0040	C0041	C0042	C0043	C0044	C0045	C0046	C0047
C0057	C0058	C0059	C0060	C0061	C0062	C0063	C0064
C0065	C0066	C0067	C0068	C0069	C0070	C0071	C0072
C0073	C0074	C0075	C0076	C0077	C0078	C0079	C0080
C0081	C0082	C0083	C0084	C0085	C0086	C0087	C0088
C0089	C0090	C0091	C0092	C0093	C0094	C0095	C0096
C0097	C0098	C0099	C0100	C0101	C0102	C0103	C0104
C0105	C0106	C0107	C0108	C0109	C0110	C0111	C0112
C0113	C0114	C0115	C0116	C0117	C0118	C0119	C0120
C0121	C0122	C0123	C0124	C0125	C0126	C0127	C0128

BUILDINGS 2, 10, & 14

C0005	C0006	C0007	C0008	C0009	C0010	C0011
C0085	C0086	C0087	C0088	C0089	C0090	C0091

BUILDINGS 3, 5, 8, 12, & 13

C0012	C0013	C0014	C0015	C0016	C0017
C0048	C0049	C0050	C0051	C0052	C0053
C0073	C0074	C0075	C0076	C0077	C0078
C0079	C0080	C0081	C0082	C0083	C0084

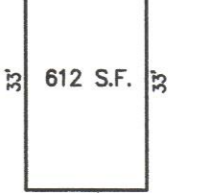
BUILDINGS 15 & 20

C0096	C0097	C0098	C0099	C0100
C0129	C0130	C0131	C0132	C0133

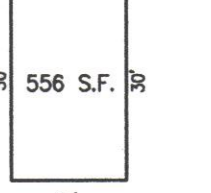
BUILDINGS 1 & 9

C0001	C0002	C0003	C0004
C0057	C0058	C0059	C0060

TWO STORY UNIT



TWO STORY UNIT



C0001	C0002	C0003	C0004	C0005	C0006	C0007	C0008	C0009	C0010
C0011	C0012	C0013	C0014	C0015	C0016	C0017	C0018	C0019	C0020
C0021	C0022	C0023	C0024	C0025	C0026	C0027	C0028	C0029	C0030
C0031	C0032	C0033	C0034	C0035	C0036	C0037	C0038	C0039	C0040
C0041	C0042	C0043	C0044	C0045	C0046	C0047	C0048	C0049	C0050
C0051	C0052	C0053	C0054	C0055	C0056	C0057	C0058	C0059	C0060
C0061	C0062	C0063	C0064	C0065	C0066	C0067	C0068	C0069	C0070
C0071	C0072	C0073	C0074	C0075	C0076	C0077	C0078	C0079	C0080
C0081	C0082	C0083	C0084	C0085	C0086	C0087	C0088	C0089	C0090
C0091	C0092	C0093	C0094	C0095	C0096	C0097	C0098	C0099	C0100
C0101	C0102	C0103	C0104	C0105	C0106	C0107	C0108	C0109	C0110
C0111	C0112	C0113	C0114	C0115	C0116	C0117	C0118	C0119	C0120
C0121	C0122	C0123	C0124	C0125	C0126	C0127	C0128	C0129	C0130

NOTE: 1. DIMENSIONS AND SQUARE FOOTAGE ARE TYPICAL FOR ALL SIMILAR UNITS

THE ORCHARDS AT OAK MEADOWS CONDOMINIUMS
INSET "A"

SCALE: 1"=30'

TAX MAP
CITY OF PLEASANTVILLE
ATLANTIC COUNTY NEW JERSEY
SCALE: 1" = 100' DATE: 6-17-2003

CRAIG F. REMINGTON LAND SURVEYOR LIC. NO. 23924

REMINGTON, VERNICK & WALBERG ENGINEERS
24 GA 28048700
845 N. MAIN STREET, PLEASANTVILLE, NJ 08232
(609) 645-7100, FAX (609) 645-7076
WEB SITE ADDRESS: WWW.RVW.COM

NEW JERSEY DEPARTMENT OF THE TREASURY
DIVISION OF TAXATION
PROPERTY ADMINISTRATION
APPROVED AS A TAX MAP PURSUANT TO THE AUTHORITY OF
N.J.S.A. 54:1-15 & 54:28-1
FOR THE DIRECTOR, DIVISION OF TAXATION

Thomas C. Kelly C.T.A.
THOMAS C. KELLY, CHIEF, LOCAL PROPERTY, FIELD ASSISTANCE

Samuel C. DiNardo C.T.A.
SAMUEL C. DINARDO, SUPERVISING FIELD REPRESENTATIVE

DATE: OCT 16 2002 SERIAL NO. 914