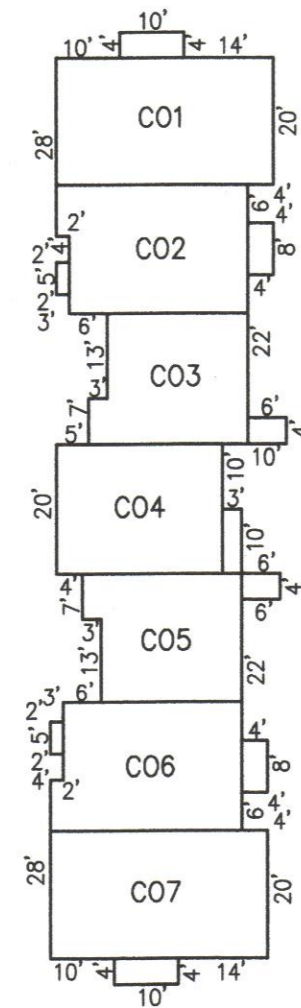
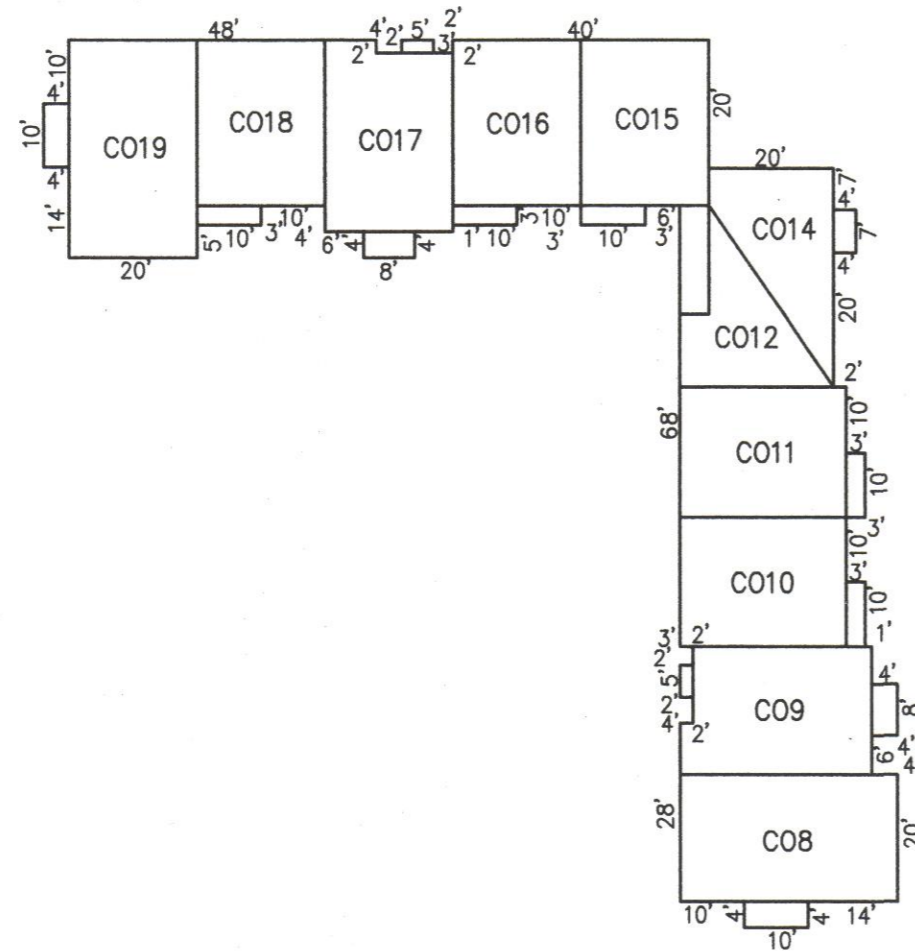


BLOCK 201, LOT 18

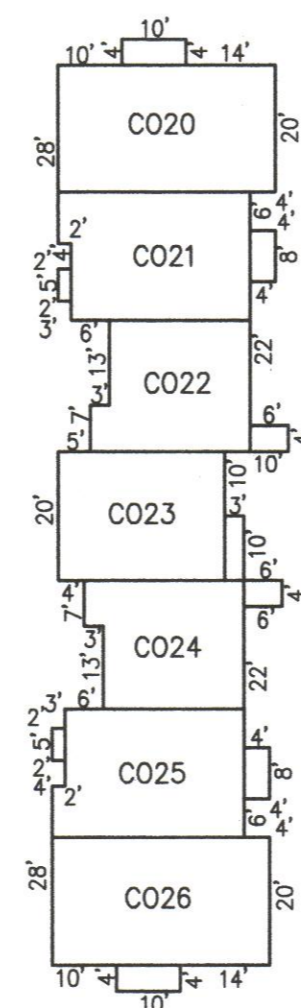
BUILDING NO. 1



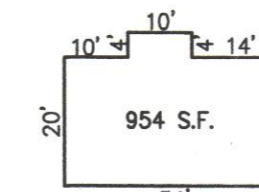
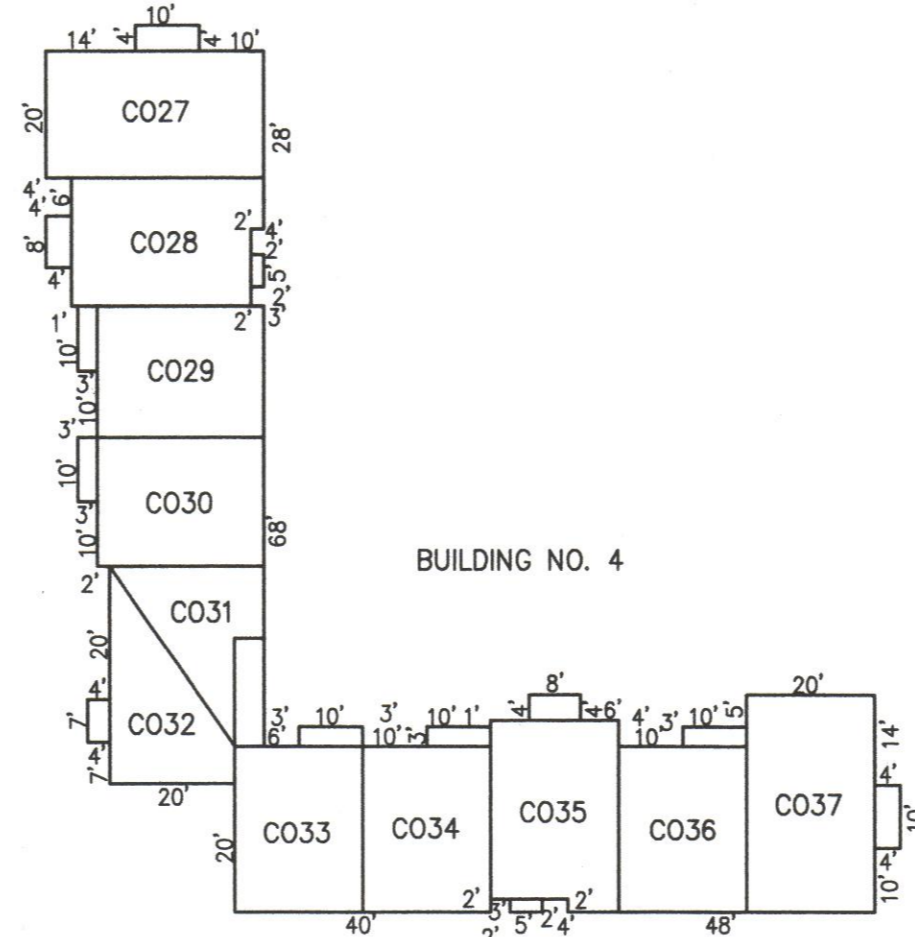
BUILDING NO. 2



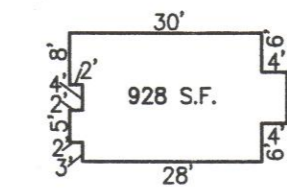
BUILDING NO. 3



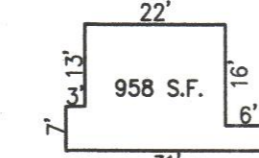
BUILDING NO. 4



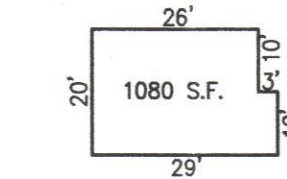
C01, C07, C08, C019, C020, C026, C027, C037, C038, C044 & C045



C02, C09, C017, C021, C023, C025, C028, C035, C039, C041, C043, C046, C050, C051 & C056

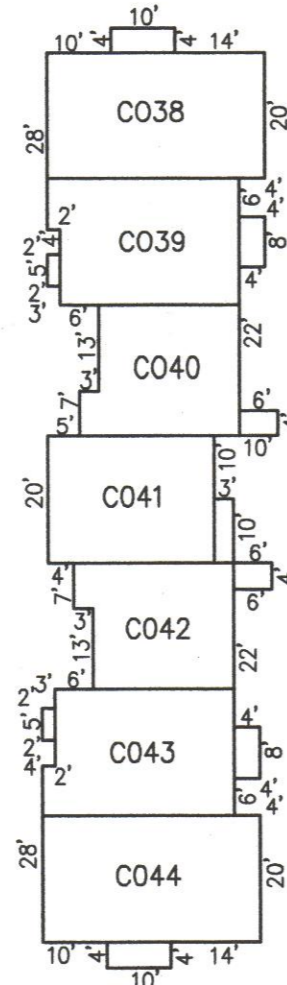


C03, C05, C047, C049, C052 & C055

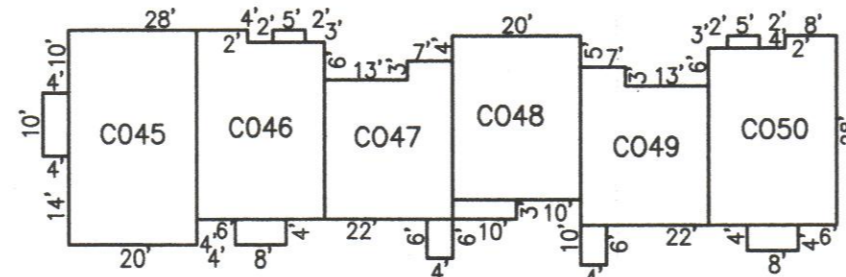


C04, C010, C011, C015, C016, C018, C022, C024, C029, C030, C033, C034, C036, C042, C048, C053 & C054

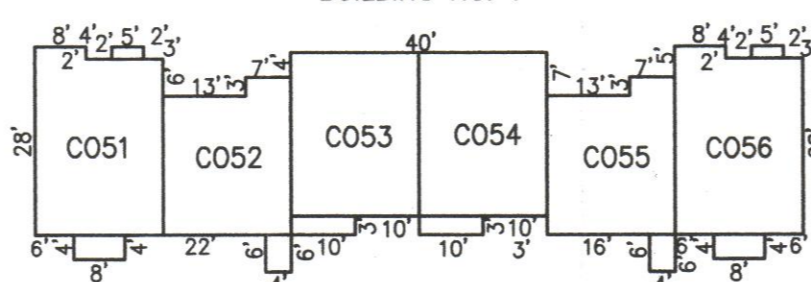
BUILDING NO. 5



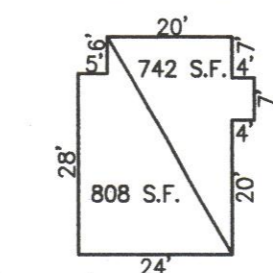
BUILDING NO. 6



BUILDING NO. 7



TWO STORY UNIT



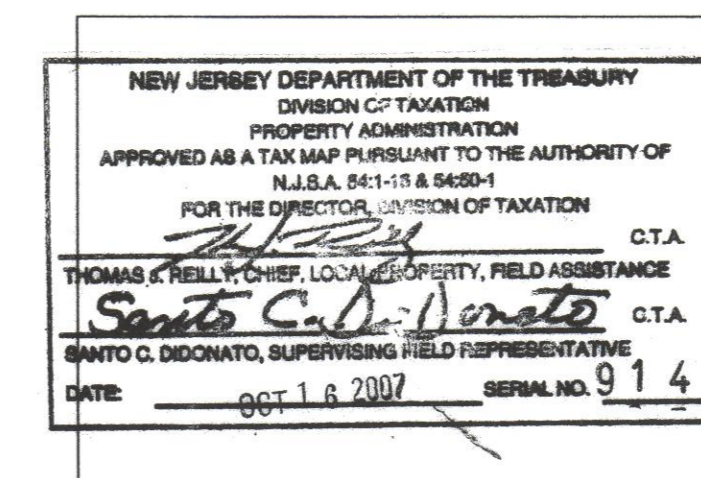
C012, C014, C031 & C032

FOX RUN CONDOMINIUMS

INSET "A"

SCALE: 1"=30'

CONDOMINIUM DETAILS AND DIMENSIONS
BLOCK 201 LOT 18
SEE SHEET 18



TAX MAP
CITY OF PLEASANTVILLE

ATLANTIC COUNTY NEW JERSEY
SCALE: 1" = 30' DATE: 6-17-2003

CRAIG F. REMINGTON LAND SURVEYOR LIC. NO. 23924



REMINGTON, VERNICK & WALBERG ENGINEERS
24 GA 28048700
845 N. MAIN STREET, PLEASANTVILLE, N.J. 08232
(609) 645-7100, FAX (609) 645-7076
WEB SITE ADDRESS: WWW.RVE.COM