

# TAX MAP CITY OF PLEASANTVILLE

ATLANTIC COUNTY NEW JERSEY  
SCALE: 1" = 100' DATE: 6-17-2003

CRAIG F. REMINGTON LAND SURVEYOR LIC. NO. 23924

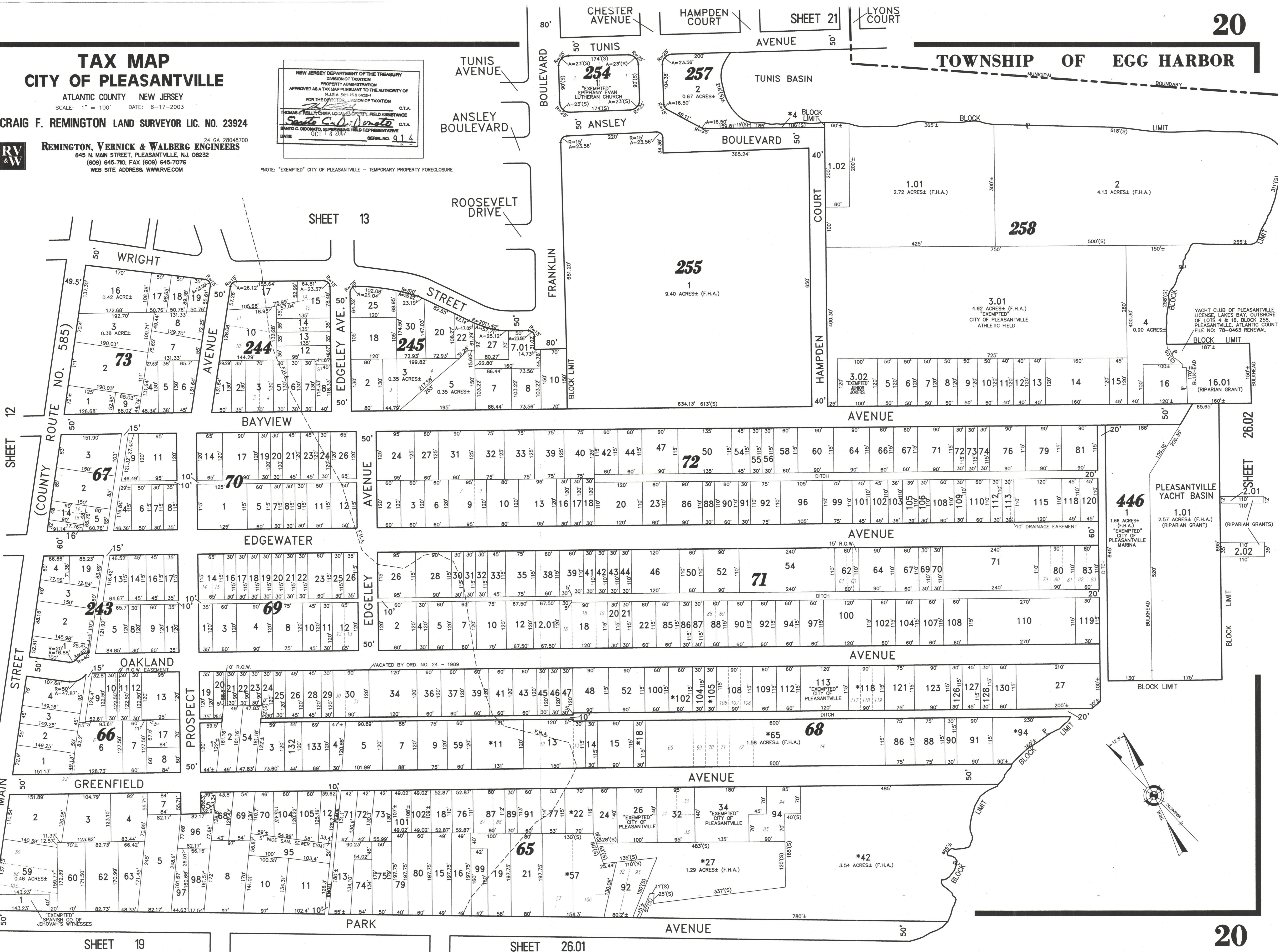


REMINGTON, VERNICK & WALBERG ENGINEERS  
24 GA 28048700  
845 N. MAIN STREET, PLEASANTVILLE, N.J. 08232  
(609) 645-7100, FAX (609) 645-7076  
WEB SITE ADDRESS: WWW.RVW.COM

NEW JERSEY DEPARTMENT OF THE TREASURY  
DIVISION OF TAXATION  
PROPERTY ADMINISTRATION  
APPROVED AS A TAX MAP PRESENTED TO THE AUTHORITY OF  
N.J.S.A. 54:1-15 & 54:29-4  
FOR THE DIRECTOR, DIVISION OF TAXATION  
THOMAS J. HELLER, COUNTY CLERK, FIELD ASSISTANCE  
SANTA C. D. VERNICK, C.T.A.  
SERIAL NO. 914  
DATE: OCT 16 2003

\*NOTE: "EXEMPTED" CITY OF PLEASANTVILLE - TEMPORARY PROPERTY FORECLOSURE

## TOWNSHIP OF EGG HARBOR



SHEET 12

MAIN STREET

SHEET 19

SHEET 13

SHEET 26.01

SHEET 26.02

