

TAX MAP CITY OF PLEASANTVILLE

ATLANTIC COUNTY NEW JERSEY
SCALE: 1" = 100' DATE: 6-17-2003

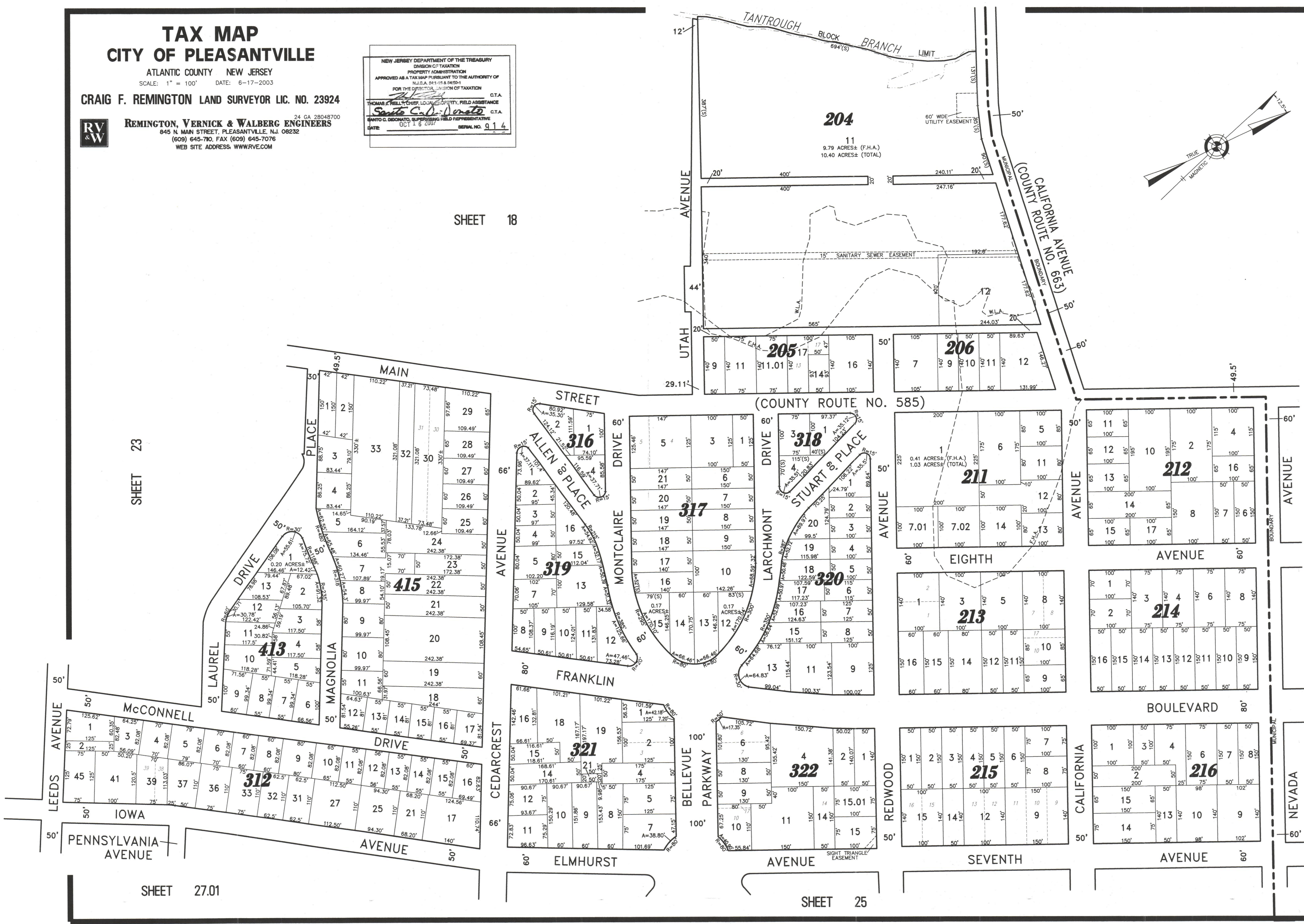
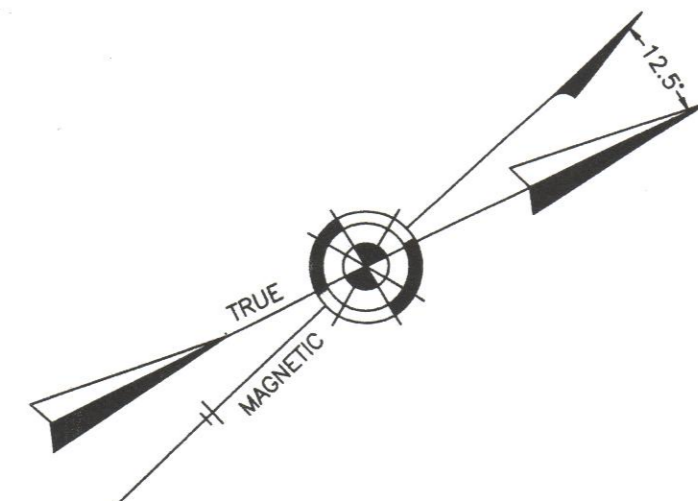
CRAIG F. REMINGTON LAND SURVEYOR LIC. NO. 23924



REMINGTON, VERNICK & WALBERG ENGINEERS
24 GA 28048700
845 N. MAIN STREET, PLEASANTVILLE, N.J. 08232
(609) 645-710, FAX (609) 645-7076
WEB SITE ADDRESS: WWW.RVW.COM

NEW JERSEY DEPARTMENT OF THE TREASURY
DIVISION OF TAXATION
PROPERTY ADMINISTRATION
APPROVED AS A TAX MAP PURSUANT TO THE AUTHORITY OF
N.J.S.A. 54:1-15 & 54:20-1
FOR THE DIRECTOR, DIVISION OF TAXATION
THOMAS J. HELLER, CHIEF, LOCAL PROPERTY, FIELD ASSISTANCE C.T.A.
SANTO C. DIORATO, SUPERVISING FIELD REPRESENTATIVE C.T.A.
DATE: OCT 16 2007 SERIAL NO. 914

SHEET 18



SHEET 23

SHEET 27.01

SHEET 25

CITY OF ABSECON