

| REVISIONS  |                    |       |
|------------|--------------------|-------|
| 8-19-2003  | CRAIG F. REMINGTON | 23924 |
| 6-30-2004  | CRAIG F. REMINGTON | 23924 |
| 12-27-2004 | CRAIG F. REMINGTON | 23924 |
| 4-24-2006  | CRAIG F. REMINGTON | 23924 |
| 2-21-2007  | CRAIG F. REMINGTON | 23924 |
| 4-4-2007   | CRAIG F. REMINGTON | 23924 |
| 7-11-2007  | CRAIG F. REMINGTON | 23924 |
| 6-10-2008  | CRAIG F. REMINGTON | 23924 |
| 5-01-2009  | CRAIG F. REMINGTON | 23924 |
| 7-22-2011  | CRAIG F. REMINGTON | 23924 |
| 6-14-2017  | CHARLES E. ADAMSON | 42627 |

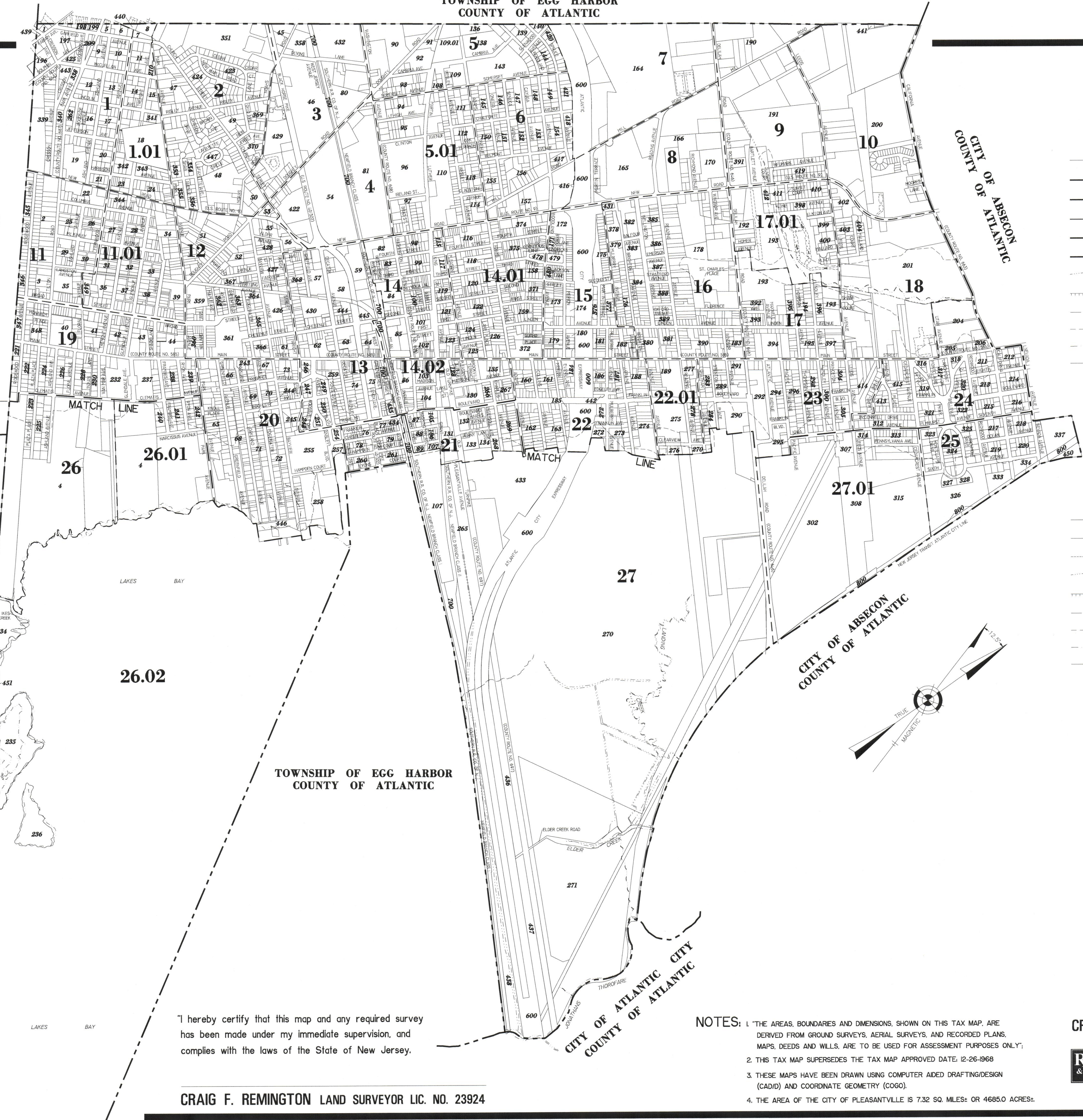
KEY MAP 1  
KEY MAP 2

CITY OF NORTHFIELD  
COUNTY OF ATLANTIC

TOWNSHIP OF EGG HARBOR  
COUNTY OF ATLANTIC

CITY OF VENTNOR  
COUNTY OF ATLANTIC

CITY OF ATLANTIC CITY  
COUNTY OF ATLANTIC



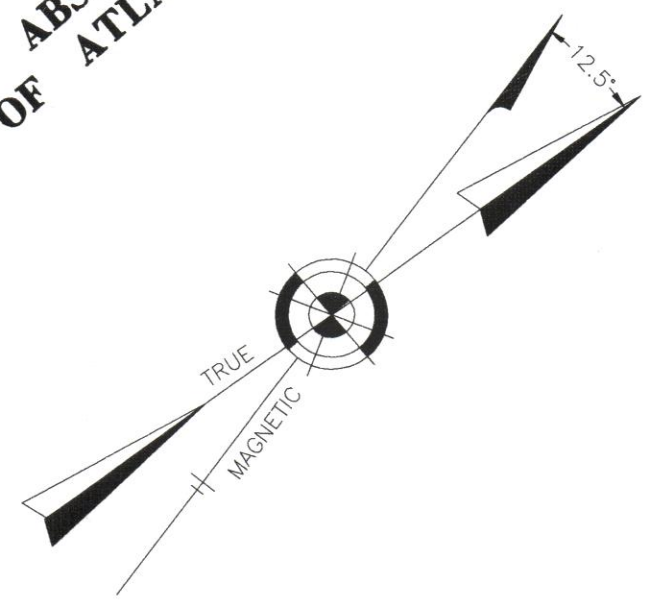
LEGEND  
KEY MAP

- 10 PLATE NUMBER
- 107 BLOCK NUMBER
- ARTIFICIAL-BLOCK-LIMIT-LINE
- MATCH LINE
- PLATE DELINEATION LINE
- KEY MAP DELINEATION LINE
- MUNICIPAL BOUNDARY LINE
- COUNTY BOUNDARY LINE
- WATERWAY LINES
- ASSESSMENT LINE
- TIDELANDS LINE
- F.H.A. FLOOD HAZARD AREA - F.H.A.
- PIERHEAD LINE PIERHEAD OR BULKHEAD LINE
- BULKHEAD LINE PIERHEAD OR BULKHEAD LINE (BLOCK LIMIT LINE)

DETAIL SHEET

1.01

- NEW BLOCK NUMBERS
- NEW LOT NUMBERS
- OLD BLOCK NUMBERS
- OLD LOT NUMBERS
- ARTIFICIAL-BLOCK-LIMIT-LINE
- LOT-LINE
- OLD LOT LINE (PROPERTY LINE)
- WATERWAY LINES
- ASSESSMENT LINE
- TIDELANDS LINE
- F.H.A. FLOOD HAZARD AREA - F.H.A.
- PIERHEAD LINE PIERHEAD OR BULKHEAD LINE
- BULKHEAD LINE PIERHEAD OR BULKHEAD LINE (BLOCK LIMIT LINE)



"THIS TAX MAP PLATE HAS BEEN DIGITALLY DRAWN USING COMPUTER-AIDED DRAFTING/DESIGN (CADD) & COORDINATE GEOMETRY (COGO). IT IS BASED ON THE ORIGINAL DIGITALLY DRAWN TAX MAP PLATE BEARING THE OFFICIAL NEW JERSEY DIVISION TAXATION APPROVAL STAMP WITH APPROVAL DATE 10-16-2007 SERIAL NUMBER 914 AND SIGNATURES OF SIGNERS' THOMAS J. REILLY, CHIEF, LOCAL PROPERTY, FIELD ASSISTANCE, SANTO C. DIDONATO, SUPERVISING FIELD REPRESENTATIVE. THE ORIGINAL DIGITALLY DRAWN TAX MAP PLATE WITH THE OFFICIAL APPROVAL STAMP IS ON FILE WITH REMINGTON, VERNICK & WALBERG ENGINEERS."

TAX MAP  
CITY OF PLEASANTVILLE

ATLANTIC COUNTY NEW JERSEY  
SCALE: 1" = 800' DATE: 6-16-2003

CRAIG F. REMINGTON LAND SURVEYOR LIC. NO. 23924



REMINGTON, VERNICK & WALBERG ENGINEERS  
24 GA 28048700  
845 N. MAIN STREET, PLEASANTVILLE, N.J. 08232  
(609) 645-710, FAX (609) 645-7076  
WEB SITE ADDRESS: WWW.RVE.COM

TO SHOW CONDITIONS AS OF 6-14-2017

"I hereby certify that this map and any required survey has been made under my immediate supervision, and complies with the laws of the State of New Jersey.

CRAIG F. REMINGTON LAND SURVEYOR LIC. NO. 23924

- NOTES:
1. THE AREAS, BOUNDARIES AND DIMENSIONS, SHOWN ON THIS TAX MAP, ARE DERIVED FROM GROUND SURVEYS, AERIAL SURVEYS, AND RECORDED PLANS, MAPS, DEEDS AND WILLS. ARE TO BE USED FOR ASSESSMENT PURPOSES ONLY;
  2. THIS TAX MAP SUPERSEDES THE TAX MAP APPROVED DATE 12-26-1968
  3. THESE MAPS HAVE BEEN DRAWN USING COMPUTER AIDED DRAFTING/DESIGN (CADD) AND COORDINATE GEOMETRY (COGO).
  4. THE AREA OF THE CITY OF PLEASANTVILLE IS 7.32 SQ. MILES± OR 4685.0 ACRES±.