

WASHINGTON AVENUE (COUNTY ROUTE NO. 608)

TAX MAP CITY OF PLEASANTVILLE

ATLANTIC COUNTY NEW JERSEY
SCALE: 1" = 100' DATE: 6-17-2003

CRAIG F. REMINGTON LAND SURVEYOR LIC. NO. 23924

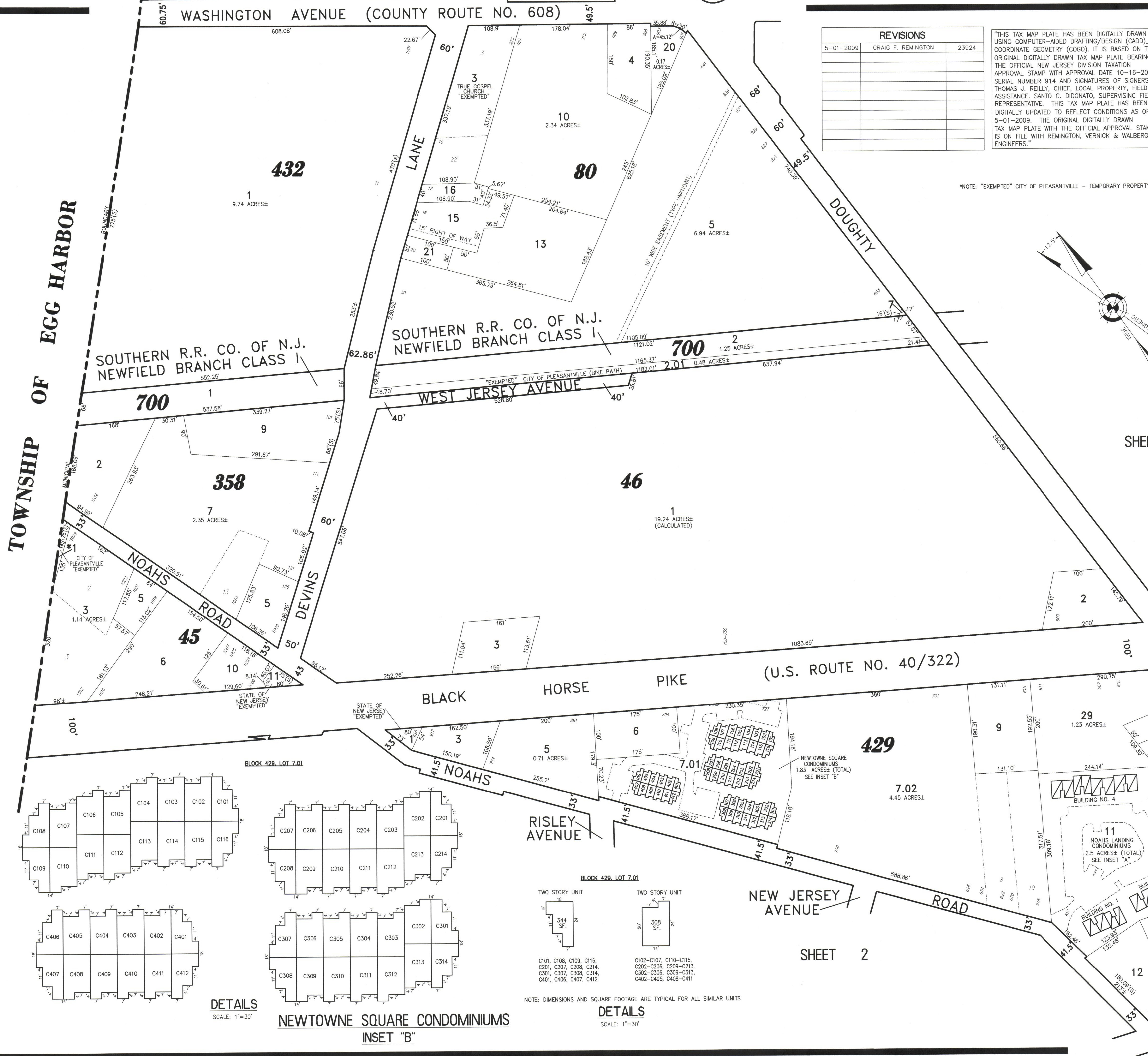


REMINGTON, VERNICK & WALBERG ENGINEERS
845 N. MAIN STREET, PLEASANTVILLE, N.J. 08232
(609) 645-7100, FAX (609) 645-7076
WEB SITE ADDRESS: WWW.RVE.COM

REVISIONS		
5-01-2009	CRAIG F. REMINGTON	23924

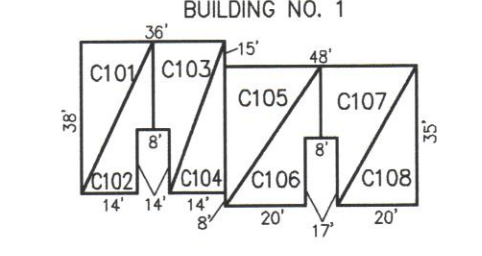
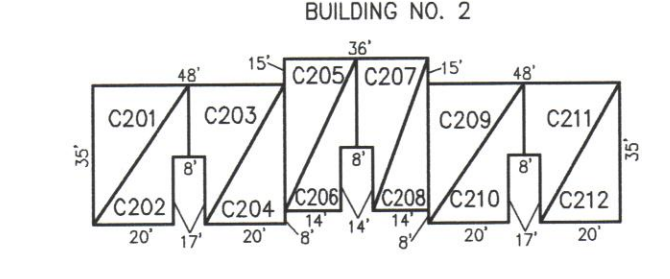
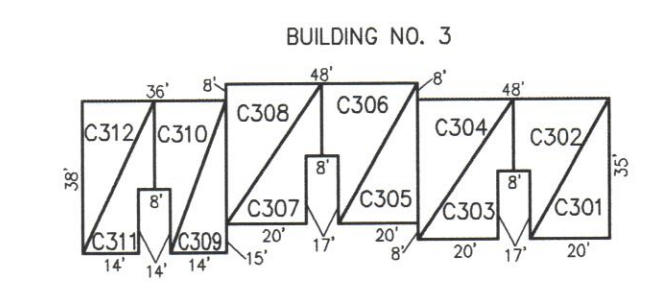
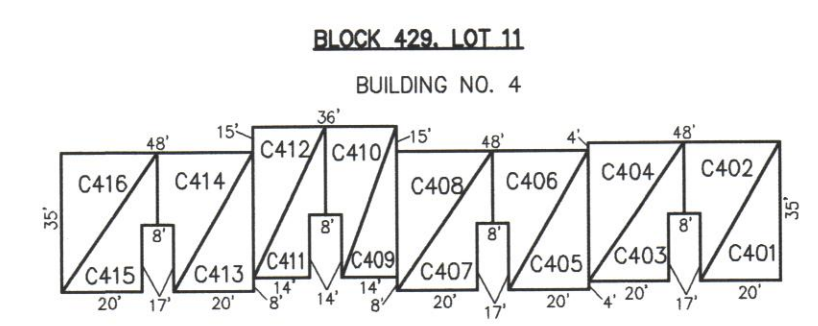
"THIS TAX MAP PLATE HAS BEEN DIGITALLY DRAWN USING COMPUTER-AIDED DRAFTING/DESIGN (CADD) & COORDINATE GEOMETRY (COGO). IT IS BASED ON THE ORIGINAL DIGITALLY DRAWN TAX MAP PLATE BEARING THE OFFICIAL NEW JERSEY DIVISION TAXATION APPROVAL STAMP WITH APPROVAL DATE 10-16-2007 SERIAL NUMBER 914 AND SIGNATURES OF SIGNERS' THOMAS J. REILLY, CHIEF, LOCAL PROPERTY, FIELD ASSISTANCE, SANTO C. DIDONATO, SUPERVISING FIELD REPRESENTATIVE. THIS TAX MAP PLATE HAS BEEN DIGITALLY UPDATED TO REFLECT CONDITIONS AS OF 5-01-2009. THE ORIGINAL DIGITALLY DRAWN TAX MAP PLATE WITH THE OFFICIAL APPROVAL STAMP IS ON FILE WITH REMINGTON, VERNICK & WALBERG ENGINEERS."

TOWNSHIP OF EGG HARBOR



*NOTE: "EXEMPTED" CITY OF PLEASANTVILLE - TEMPORARY PROPERTY FORECLOSURE

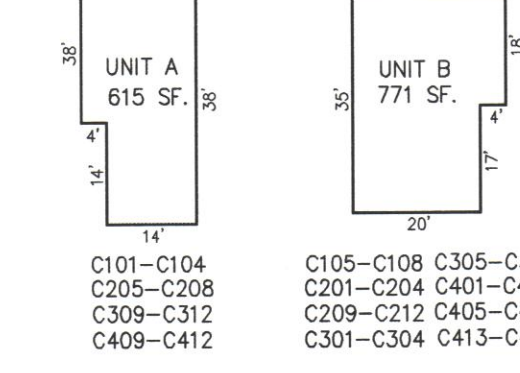
SHEET 4



DETAILS

SCALE: 1" = 40'

BLOCK 429, LOT 11

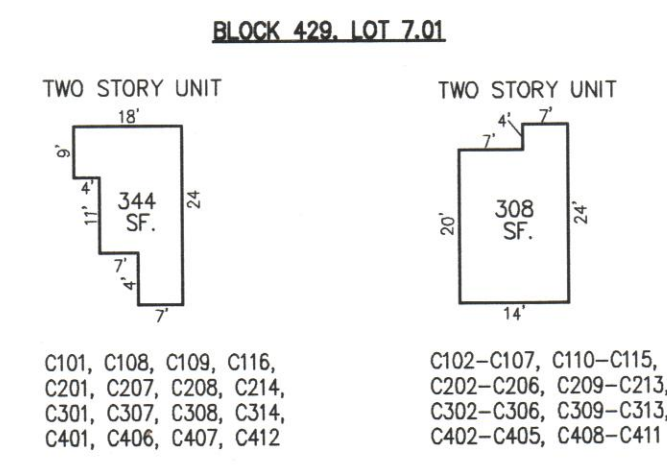
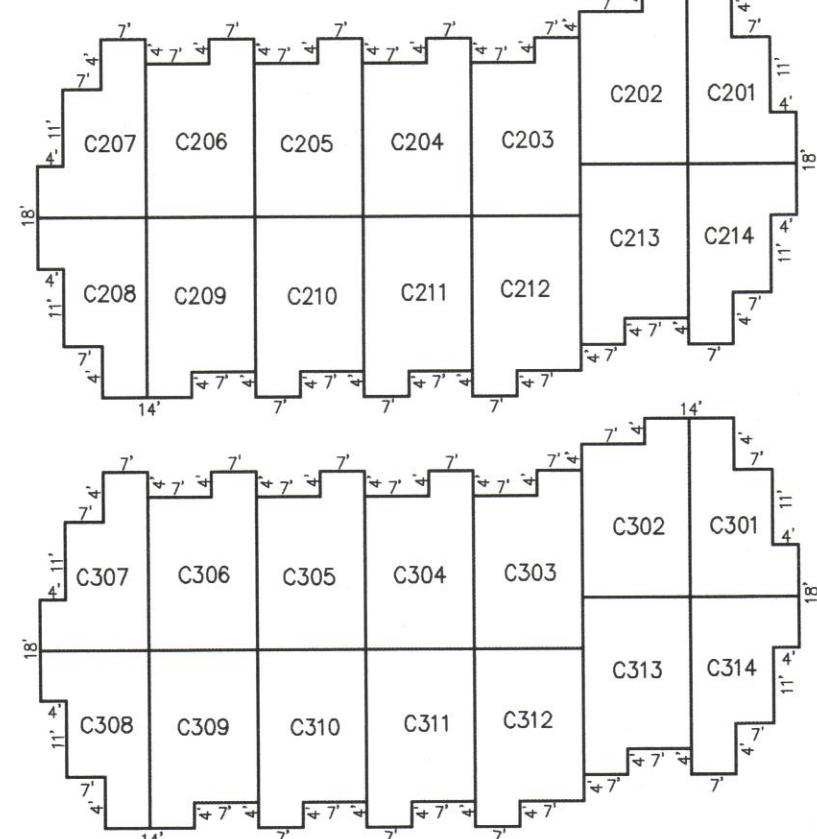
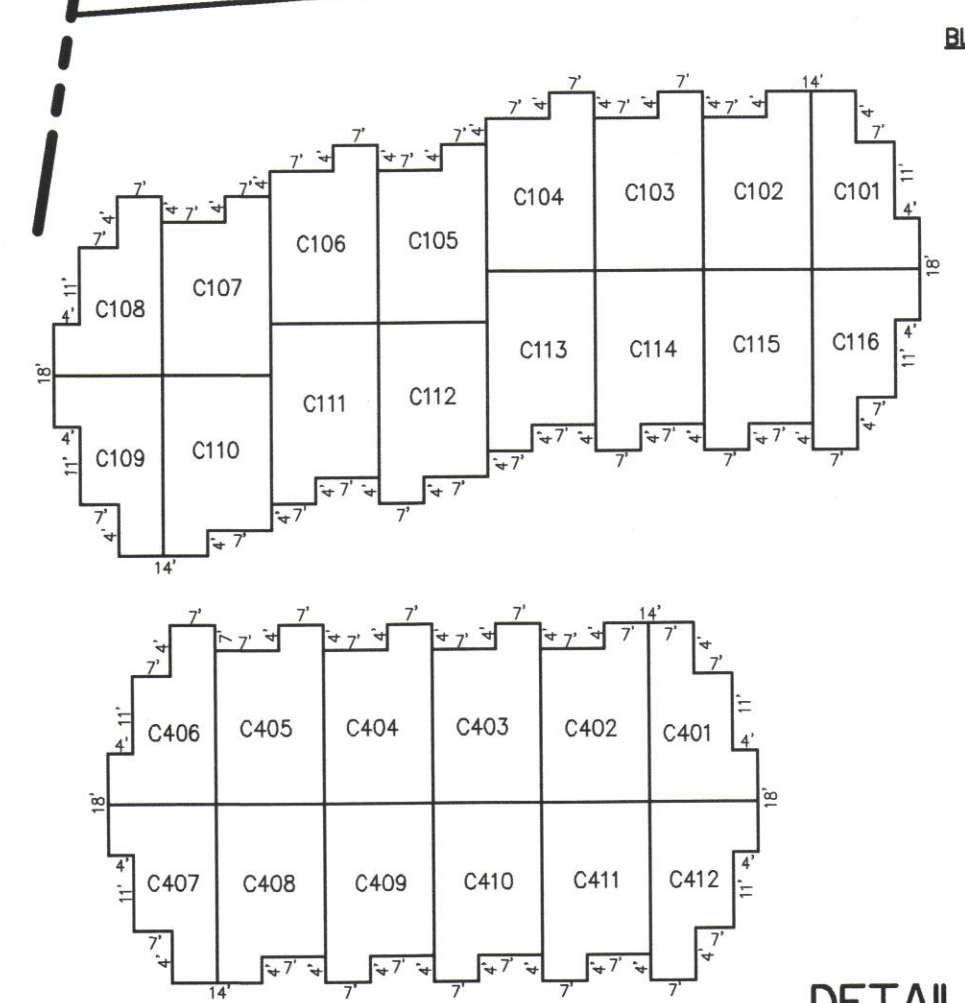


NOTE: 1. DIMENSIONS AND SQUARE FOOTAGE ARE TYPICAL FOR ALL SIMILAR UNITS
2. EVEN NUMBERS INDICATE SECOND FLOOR UNITS
ODD NUMBERS INDICATE FIRST FLOOR UNITS

DETAILS

SCALE: 1" = 30'

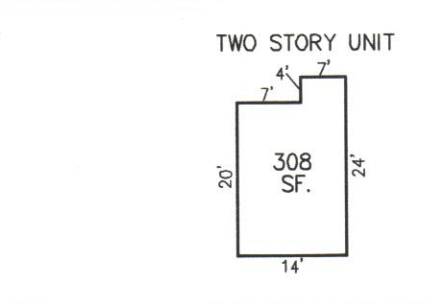
NOAHS LANDING CONDOMINIUMS INSET "A"



DETAILS

SCALE: 1" = 30'

NEWTOWNE SQUARE CONDOMINIUMS INSET "B"



NOTE: DIMENSIONS AND SQUARE FOOTAGE ARE TYPICAL FOR ALL SIMILAR UNITS

DETAILS

SCALE: 1" = 30'