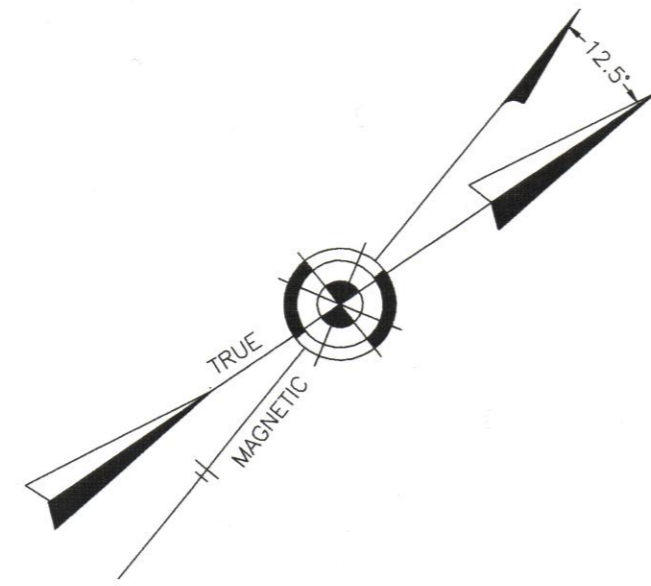


REVISIONS		
5-01-2009	CRAIG F. REMINGTON	23924



SHEET 7

SPRUCE AVENUE  
MILL ROAD

SHEET 6

ATLANTIC CITY EXPRESSWAY

MARTIN TERRACE

SHEET 15

BRIGHTON AVENUE

WELLINGTON AVENUE

READING AVENUE

SHEET 16

WINDSOR AVENUE

MILL AVENUE

READING AVENUE

RICHMOND AVENUE

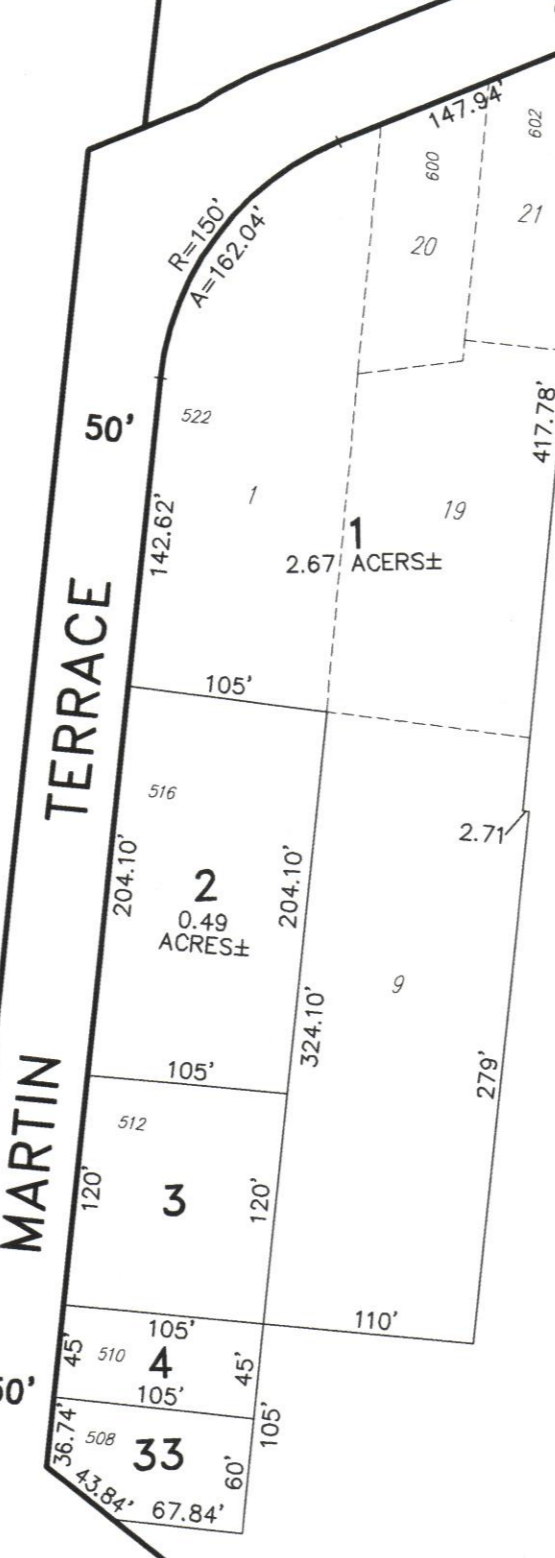
(U.S. ROUTE NO. 9)

ROAD

DELLAH ROAD

(COUNTY ROUTE NO. 646)

SHEET 9



165

5  
15.47 ACRES±

4  
"EXEMPTED"  
CITY OF PLEASANTVILLE  
PUBLIC WORKS BUILDING  
3.57 ACRES±

5  
3.70 ACRES±

166

15  
2.37 ACRES±

170

30.02  
4.21 ACRES±

1  
10.60 ACRES±

2.02  
2.00 ACRES±

21  
1.42 ACRES±

18

10

6

"THIS TAX MAP PLATE HAS BEEN DIGITALLY DRAWN USING COMPUTER-AIDED DRAFTING/DESIGN (CADD) & COORDINATE GEOMETRY (COGO). IT IS BASED ON THE ORIGINAL DIGITALLY DRAWN TAX MAP PLATE BEARING THE OFFICIAL NEW JERSEY DIVISION TAXATION APPROVAL STAMP WITH APPROVAL DATE 10-16-2007 SERIAL NUMBER 914 AND SIGNATURES OF SIGNERS' THOMAS J. REILLY, CHIEF, LOCAL PROPERTY, FIELD ASSISTANCE, SANTO C. DIDONATO, SUPERVISING FIELD REPRESENTATIVE. THIS TAX MAP PLATE HAS BEEN DIGITALLY UPDATED TO REFLECT CONDITIONS AS OF 5-01-2009. THE ORIGINAL DIGITALLY DRAWN TAX MAP PLATE WITH THE OFFICIAL APPROVAL STAMP IS ON FILE WITH REMINGTON, VERNICK & WALBERG ENGINEERS."



**TAX MAP**  
**CITY OF PLEASANTVILLE**

ATLANTIC COUNTY NEW JERSEY  
SCALE: 1" = 100' DATE: 6-17-2003

CRAIG F. REMINGTON LAND SURVEYOR LIC. NO. 23924

REMINGTON, VERNICK & WALBERG ENGINEERS  
845 N. MAIN STREET, PLEASANTVILLE, NJ 08232  
(609) 645-7000 FAX (609) 645-7076  
WEB SITE ADDRESS: WWW.RVW.COM