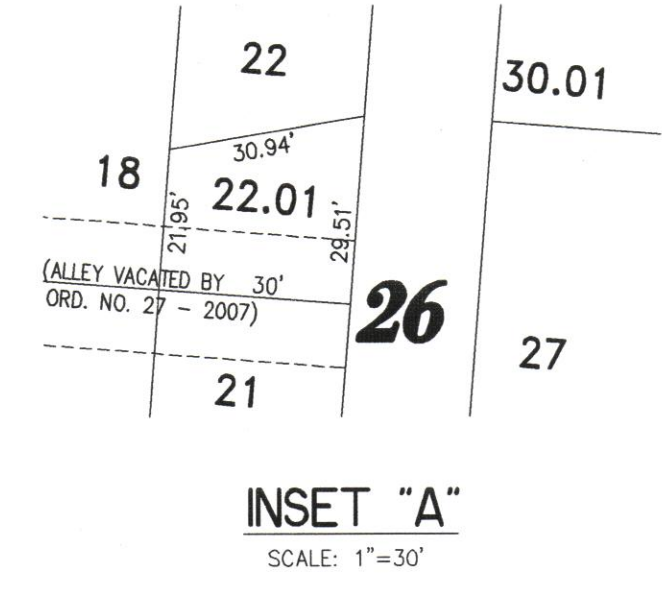
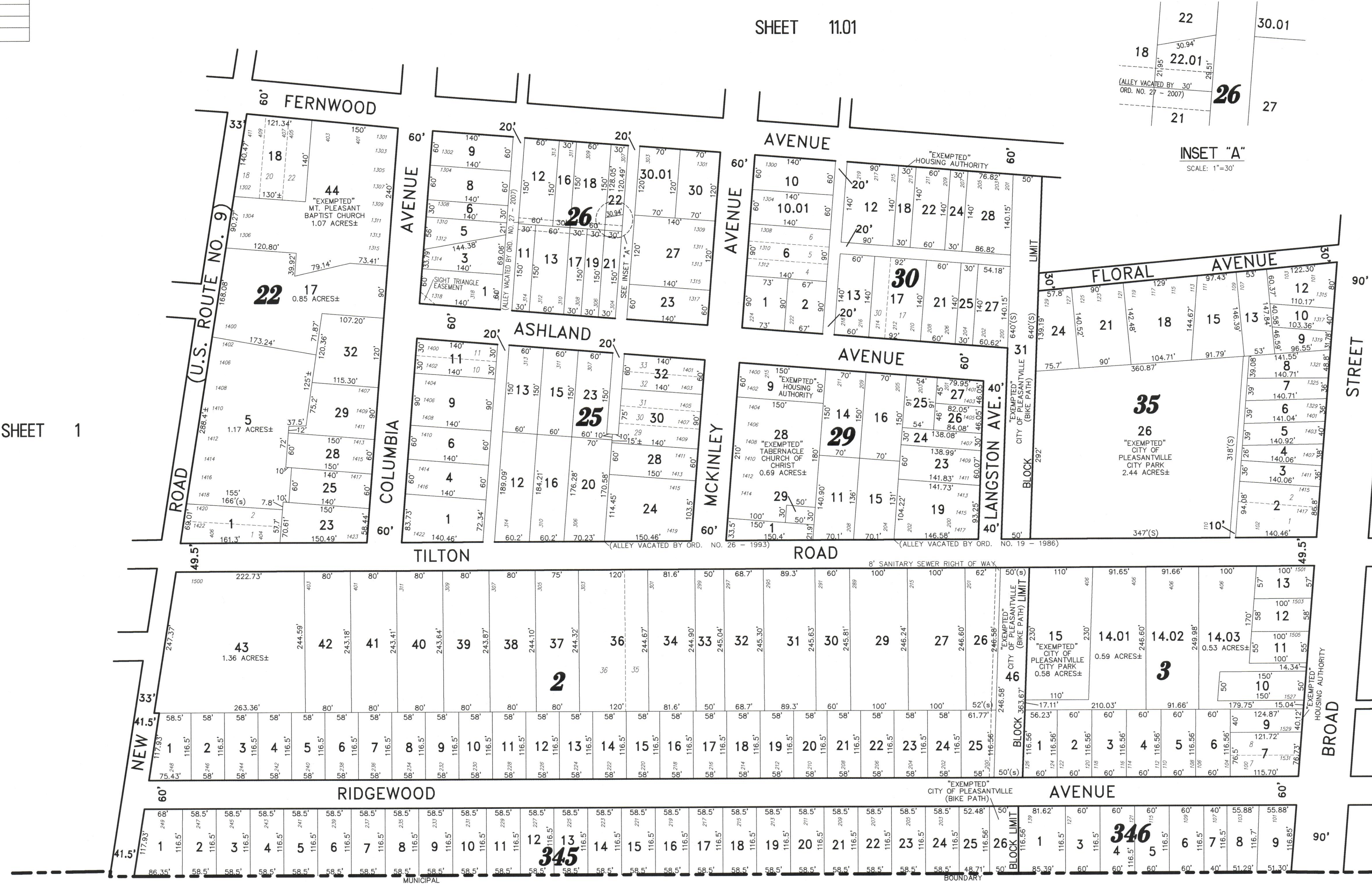
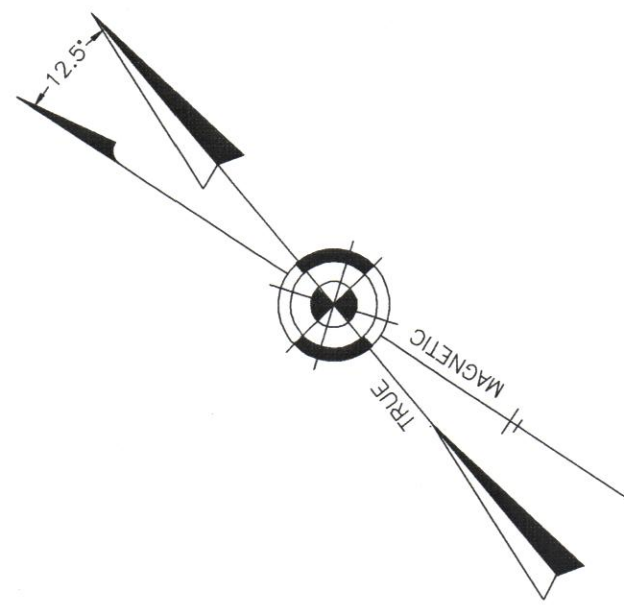


REVISIONS		
5-01-2009	CRAIG F. REMINGTON	23924
7-22-2011	CRAIG F. REMINGTON	23924



SHEET 1

SHEET 11.01

SHEET 19

CITY OF NORTHFIELD

*NOTE: "EXEMPTED" CITY OF PLEASANTVILLE - TEMPORARY PROPERTY FORECLOSURE

TAX MAP

CITY OF PLEASANTVILLE

ATLANTIC COUNTY NEW JERSEY
 SCALE: 1" = 100' DATE: 6-17-2003

CRAIG F. REMINGTON LAND SURVEYOR LIC. NO. 23924



REMINGTON, VERNICK & WALBERG ENGINEERS
 845 N. MAIN STREET, PLEASANTVILLE, N.J. 08232
 (609) 645-7000 FAX (609) 645-7076
 WEB SITE ADDRESS: WWW.RVW.COM

"THIS TAX MAP PLATE HAS BEEN DIGITALLY DRAWN USING COMPUTER-AIDED DRAFTING/DESIGN (CAD) & COORDINATE GEOMETRY (COCO). IT IS BASED ON THE ORIGINAL DIGITALLY DRAWN TAX MAP PLATE BEARING THE OFFICIAL NEW JERSEY DIVISION TAXATION APPROVAL STAMP WITH APPROVAL DATE 10-16-2007 SERIAL NUMBER 914 AND SIGNATURES OF SIGNERS THOMAS J. REILLY, CHIEF LOCAL PROPERTY FIELD ASSISTANCE, SANTO C. DIDONATO, SUPERVISING FIELD REPRESENTATIVE. THIS TAX MAP PLATE HAS BEEN DIGITALLY UPDATED TO REFLECT CONDITIONS AS OF 7-22-2011. THE ORIGINAL DIGITALLY DRAWN TAX MAP PLATE WITH THE OFFICIAL APPROVAL STAMP IS ON FILE WITH REMINGTON, VERNICK & WALBERG ENGINEERS."