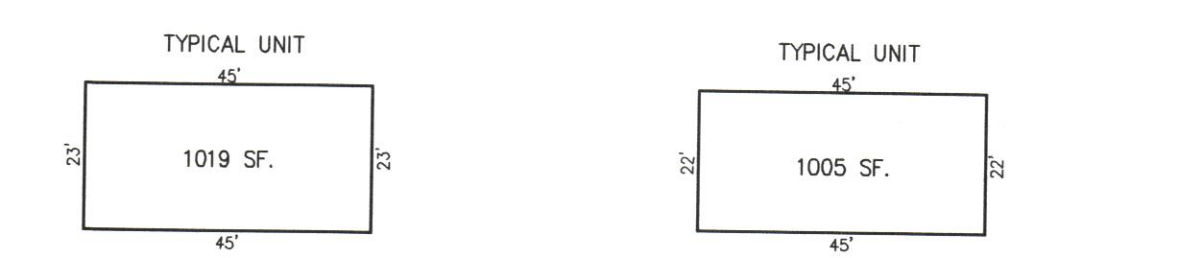


**BLOCK 193, LOT 1**  
THREE STORY BUILDING

|       |       |       |       |       |       |       |       |
|-------|-------|-------|-------|-------|-------|-------|-------|
| C0110 | C0410 | C0112 | C0412 | C0122 | C0422 | C0124 | C0424 |
| C0310 | C0510 | C0312 | C0512 | C0322 | C0522 | C0324 | C0524 |
| C0108 | C0408 | C0111 | C0411 | C0121 | C0421 | C0123 | C0423 |
| C0308 | C0508 | C0311 | C0511 | C0321 | C0521 | C0323 | C0523 |
| C0106 | C0406 | C0108 | C0408 | C0118 | C0418 | C0120 | C0420 |
| C0306 | C0506 | C0308 | C0508 | C0318 | C0518 | C0320 | C0520 |
| C0105 | C0405 | C0107 | C0407 | C0117 | C0417 | C0119 | C0419 |
| C0305 | C0505 | C0307 | C0507 | C0317 | C0517 | C0319 | C0519 |
| C0102 | C0402 | C0104 | C0404 | C0114 | C0414 | C0116 | C0416 |
| C0302 | C0502 | C0304 | C0504 | C0314 | C0514 | C0316 | C0516 |
| C0101 | C0401 | C0103 | C0403 | C0113 | C0413 | C0115 | C0415 |
| C0301 | C0501 | C0303 | C0503 | C0313 | C0513 | C0315 | C0515 |
| C0201 | C0501 | C0203 | C0503 | C0213 | C0513 | C0215 | C0515 |

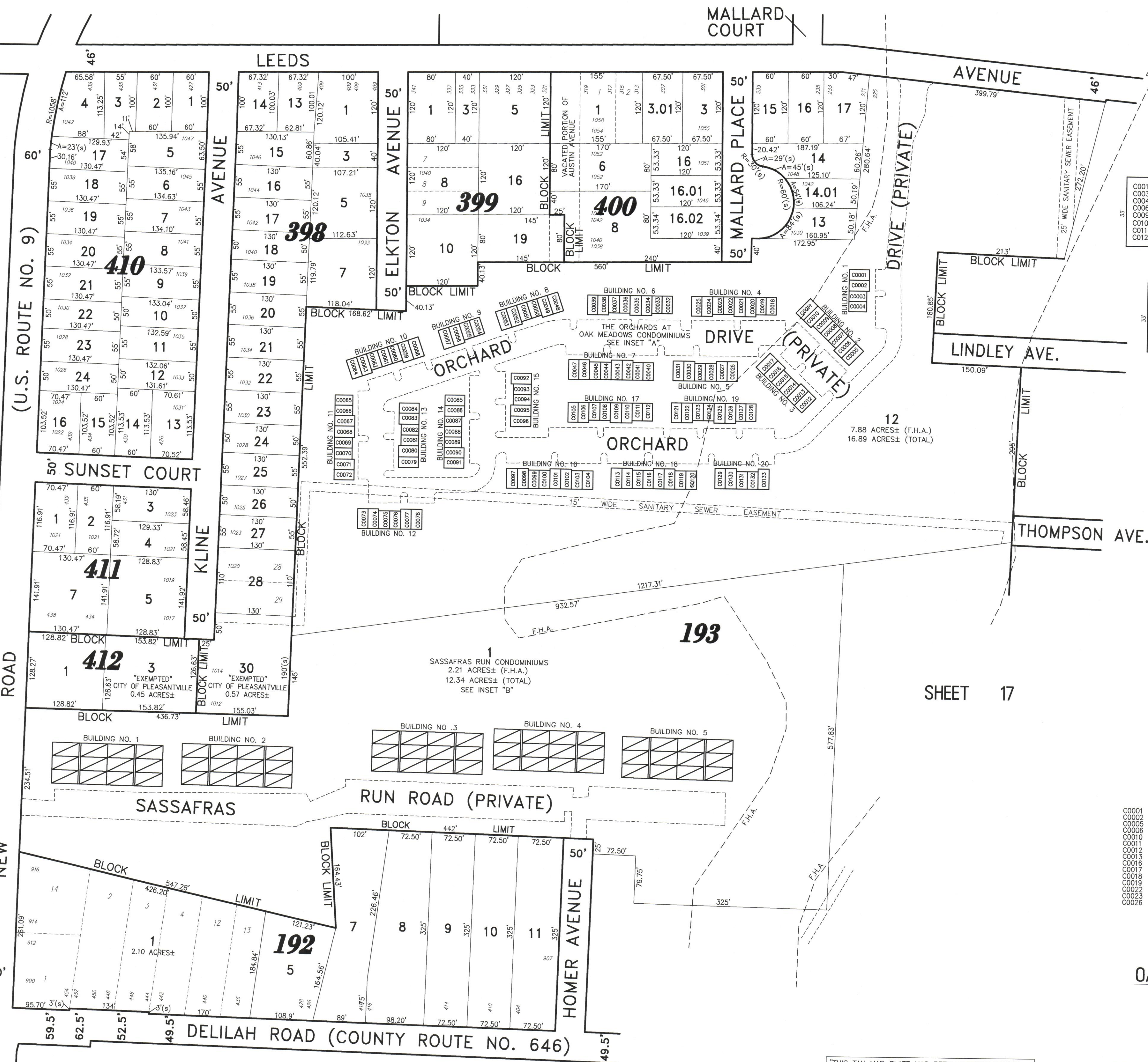


|       |       |       |       |       |
|-------|-------|-------|-------|-------|
| C0101 | C0201 | C0301 | C0401 | C0501 |
| C0102 | C0202 | C0302 | C0402 | C0502 |
| C0103 | C0203 | C0303 | C0403 | C0503 |
| C0104 | C0204 | C0304 | C0404 | C0504 |
| C0105 | C0205 | C0305 | C0405 | C0505 |
| C0106 | C0206 | C0306 | C0406 | C0506 |
| C0107 | C0207 | C0307 | C0407 | C0507 |
| C0108 | C0208 | C0308 | C0408 | C0508 |
| C0109 | C0209 | C0309 | C0409 | C0509 |
| C0110 | C0210 | C0310 | C0410 | C0510 |
| C0111 | C0211 | C0311 | C0411 | C0511 |
| C0112 | C0212 | C0312 | C0412 | C0512 |
| C0113 | C0213 | C0313 | C0413 | C0513 |
| C0114 | C0214 | C0314 | C0414 | C0514 |
| C0115 | C0215 | C0315 | C0415 | C0515 |
| C0116 | C0216 | C0316 | C0416 | C0516 |
| C0117 | C0217 | C0317 | C0417 | C0517 |
| C0118 | C0218 | C0318 | C0418 | C0518 |
| C0119 | C0219 | C0319 | C0419 | C0519 |
| C0120 | C0220 | C0320 | C0420 | C0520 |
| C0121 | C0221 | C0321 | C0421 | C0521 |
| C0122 | C0222 | C0322 | C0422 | C0522 |

NOTE: 1. DIMENSIONS AND SQUARE FOOTAGE ARE TYPICAL FOR ALL SIMILAR UNITS

**SASSAFRAS RUN CONDOMINIUMS**  
3 STORY CONDOS  
INSET "B"  
SCALE: 1"=30'

SHEET 9



**BLOCK 193, LOT 12**  
BUILDINGS 4, 6, 7, 11, 16, 17, 18, & 19

|       |       |       |       |       |       |       |       |
|-------|-------|-------|-------|-------|-------|-------|-------|
| C0018 | C0019 | C0020 | C0021 | C0022 | C0023 | C0024 | C0025 |
| C0032 | C0033 | C0034 | C0035 | C0036 | C0037 | C0038 | C0039 |
| C0040 | C0041 | C0042 | C0043 | C0044 | C0045 | C0046 | C0047 |
| C0065 | C0066 | C0067 | C0068 | C0069 | C0070 | C0071 | C0072 |
| C0097 | C0098 | C0099 | C0100 | C0101 | C0102 | C0103 | C0104 |
| C0105 | C0106 | C0107 | C0108 | C0109 | C0110 | C0111 | C0112 |
| C0113 | C0114 | C0115 | C0116 | C0117 | C0118 | C0119 | C0120 |
| C0121 | C0122 | C0123 | C0124 | C0125 | C0126 | C0127 | C0128 |

**BUILDINGS 2, 10, & 14**

|       |       |       |       |       |       |       |
|-------|-------|-------|-------|-------|-------|-------|
| C0005 | C0006 | C0007 | C0008 | C0009 | C0010 | C0011 |
| C0058 | C0059 | C0060 | C0061 | C0062 | C0063 | C0064 |
| C0085 | C0086 | C0087 | C0088 | C0089 | C0090 | C0091 |

**BUILDINGS 3, 5, 8, 12, & 13**

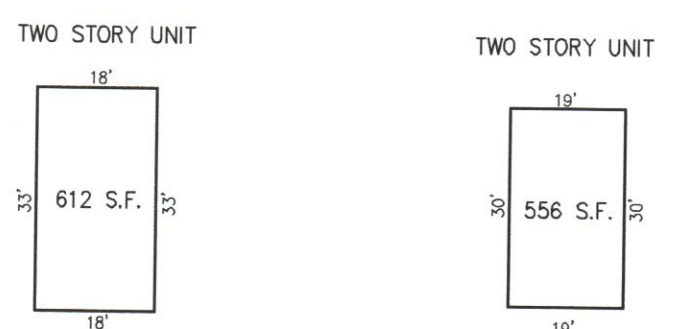
|       |       |       |       |       |       |
|-------|-------|-------|-------|-------|-------|
| C0012 | C0013 | C0014 | C0015 | C0016 | C0017 |
| C0028 | C0029 | C0030 | C0031 | C0032 | C0033 |
| C0048 | C0049 | C0050 | C0051 | C0052 | C0053 |
| C0073 | C0074 | C0075 | C0076 | C0077 | C0078 |
| C0079 | C0080 | C0081 | C0082 | C0083 | C0084 |

**BUILDINGS 15 & 20**

|       |       |       |       |       |
|-------|-------|-------|-------|-------|
| C0096 | C0097 | C0098 | C0099 | C0100 |
| C0129 | C0130 | C0131 | C0132 | C0133 |

**BUILDINGS 1 & 9**

|       |       |       |       |
|-------|-------|-------|-------|
| C0001 | C0002 | C0003 | C0004 |
| C0057 | C0058 | C0059 | C0060 |



|       |       |       |       |       |       |       |       |
|-------|-------|-------|-------|-------|-------|-------|-------|
| C0001 | C0002 | C0003 | C0004 | C0005 | C0006 | C0007 | C0008 |
| C0009 | C0010 | C0011 | C0012 | C0013 | C0014 | C0015 | C0016 |
| C0017 | C0018 | C0019 | C0020 | C0021 | C0022 | C0023 | C0024 |
| C0025 | C0026 | C0027 | C0028 | C0029 | C0030 | C0031 | C0032 |
| C0033 | C0034 | C0035 | C0036 | C0037 | C0038 | C0039 | C0040 |
| C0041 | C0042 | C0043 | C0044 | C0045 | C0046 | C0047 | C0048 |
| C0049 | C0050 | C0051 | C0052 | C0053 | C0054 | C0055 | C0056 |
| C0057 | C0058 | C0059 | C0060 | C0061 | C0062 | C0063 | C0064 |
| C0065 | C0066 | C0067 | C0068 | C0069 | C0070 | C0071 | C0072 |
| C0073 | C0074 | C0075 | C0076 | C0077 | C0078 | C0079 | C0080 |
| C0081 | C0082 | C0083 | C0084 | C0085 | C0086 | C0087 | C0088 |
| C0089 | C0090 | C0091 | C0092 | C0093 | C0094 | C0095 | C0096 |
| C0097 | C0098 | C0099 | C0100 | C0101 | C0102 | C0103 | C0104 |

NOTE: 1. DIMENSIONS AND SQUARE FOOTAGE ARE TYPICAL FOR ALL SIMILAR UNITS

**THE ORCHARDS AT OAK MEADOWS CONDOMINIUMS**  
INSET "A"  
SCALE: 1"=30'

**TAX MAP**  
**CITY OF PLEASANTVILLE**

ATLANTIC COUNTY NEW JERSEY  
SCALE: 1" = 100' DATE: 6-17-2003

CRAIG F. REMINGTON LAND SURVEYOR LIC. NO. 23924



**REMINGTON, VERNICK & WALBERG ENGINEERS**  
24 GA 28048700  
845 N. MAIN STREET, PLEASANTVILLE, N.J. 08232  
(609) 645-7100 FAX (609) 645-7076  
WEB SITE ADDRESS WWW.RVWE.COM

"THIS TAX MAP PLATE HAS BEEN DIGITALLY DRAWN USING COMPUTER-AIDED DRAFTING/DESIGN (CADD) & COORDINATE GEOMETRY (COGO). IT IS BASED ON THE ORIGINAL DIGITALLY DRAWN TAX MAP PLATE BEARING THE OFFICIAL NEW JERSEY DIVISION TAXATION APPROVAL STAMP WITH APPROVAL DATE 10-16-2007 SERIAL NUMBER 914 AND SIGNATURES OF SIGNERS THOMAS J. REILLY, CHIEF, LOCAL PROPERTY, FIELD ASSISTANCE, SANTO C. DIDONATO, SUPERVISING FIELD REPRESENTATIVE. THIS TAX MAP PLATE HAS BEEN DIGITALLY UPDATED TO REFLECT CONDITIONS AS OF 7-22-2011. THE ORIGINAL DIGITALLY DRAWN TAX MAP PLATE WITH THE OFFICIAL APPROVAL STAMP IS ON FILE WITH REMINGTON, VERNICK & WALBERG ENGINEERS."

SHEET 16

**REVISIONS**

|                   |       |
|-------------------|-------|
| RAIG F. REMINGTON | 23924 |
| RAIG F. REMINGTON | 23924 |