

TAX MAP OF PLEASANTVILLE

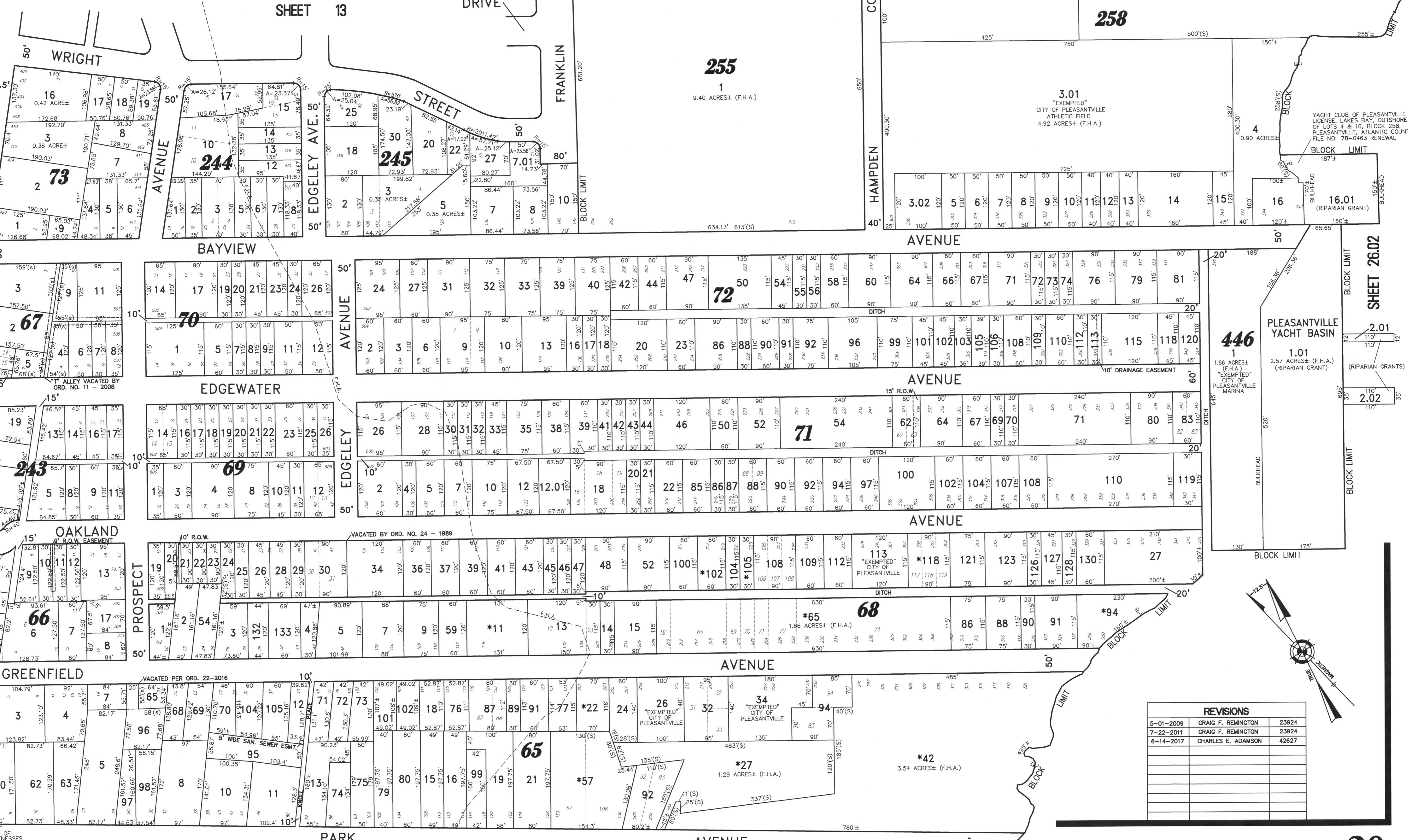
ATLANTIC COUNTY NEW JERSEY
 1" = 100' DATE: 6-17-2003
 REMINGTON LAND SURVEYOR LIC. NO. 23924

TON, VERNICK & WALBERG ENGINEERS
 24 GA 28048700
 645 N. MAIN STREET, PLEASANTVILLE, N.J. 08232
 (609) 645-710, FAX (609) 645-7076
 WEB SITE ADDRESS: WWW.RVE.COM

"THIS TAX MAP PLATE HAS BEEN DIGITALLY DRAWN USING COMPUTER-AIDED DRAFTING/DESIGN (CADD) & COORDINATE GEOMETRY (COGO). IT IS BASED ON THE ORIGINAL DIGITALLY DRAWN TAX MAP PLATE BEARING THE OFFICIAL NEW JERSEY DIVISION TAXATION APPROVAL STAMP WITH APPROVAL DATE 10-16-2007 SERIAL NUMBER 914 AND SIGNATURES OF SIGNERS' THOMAS J. REILLY, CHIEF, LOCAL PROPERTY, FIELD ASSISTANCE, SANTO C. DIDONATO, SUPERVISING FIELD REPRESENTATIVE. THE ORIGINAL DIGITALLY DRAWN TAX MAP PLATE WITH THE OFFICIAL APPROVAL STAMP IS ON FILE WITH REMINGTON, VERNICK & WALBERG ENGINEERS."

*NOTE: "EXEMPTED" CITY OF PLEASANTVILLE - TEMPORARY PROPERTY FORECLOSURE

TOWNSHIP OF EGG HARBOR



REVISIONS		
5-01-2009	CRAIG F. REMINGTON	23924
7-22-2011	CRAIG F. REMINGTON	23924
6-14-2017	CHARLES E. ADAMSON	42627