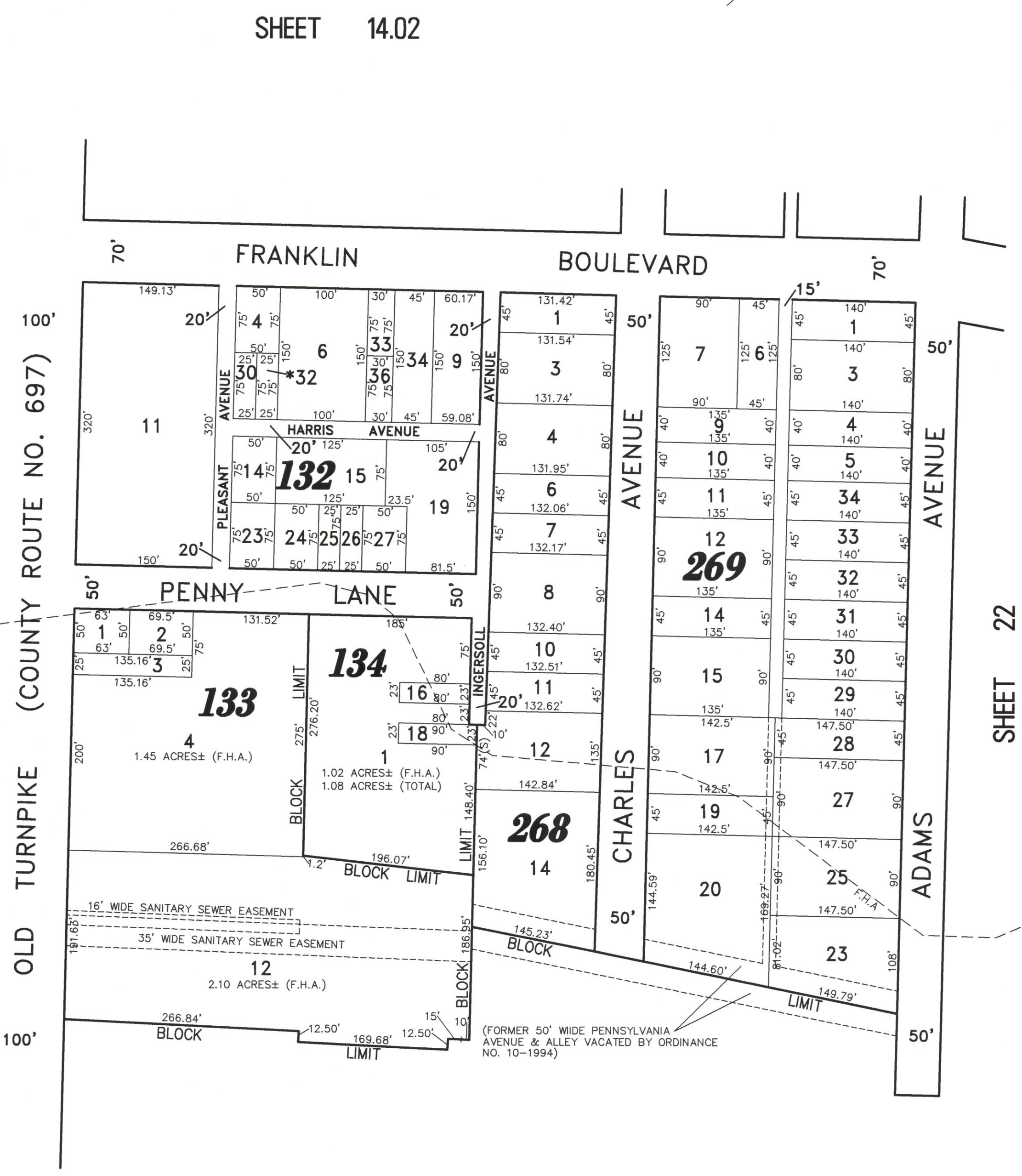
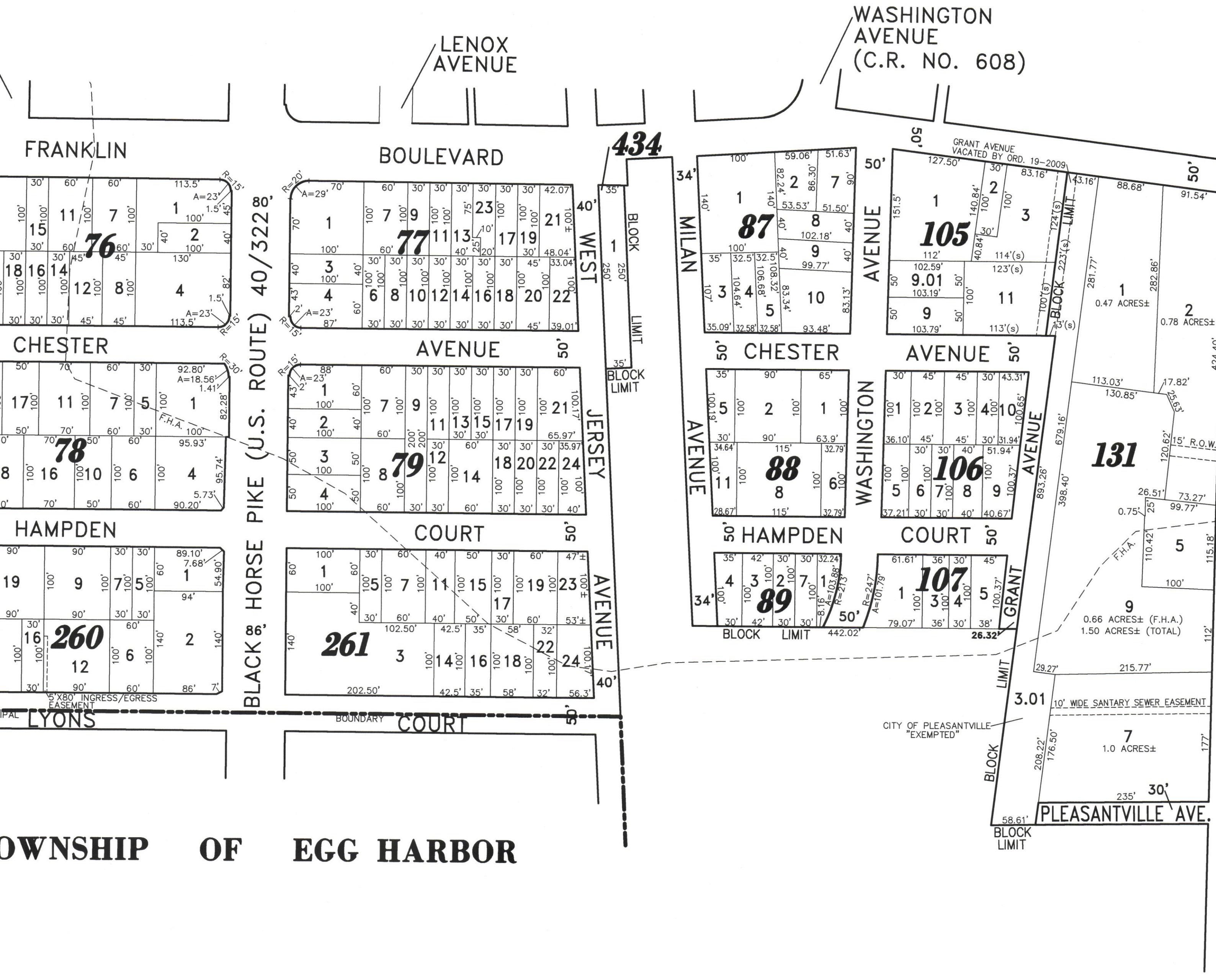
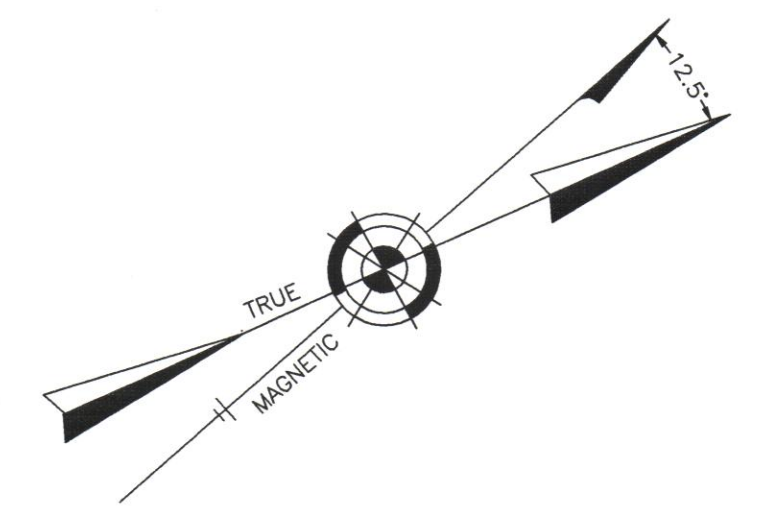


23924
23924
23924

SHEET 13

SHEET 14.02



SHEET 27

SHEET 22

TOWNSHIP OF EGG HARBOR

*NOTE: "EXEMPTED" CITY OF PLEASANTVILLE - TEMPORARY PROPERTY FORECLOSURE

"THIS TAX MAP PLATE HAS BEEN DIGITALLY DRAWN USING COMPUTER-AIDED DRAFTING/DESIGN (CADD) & COORDINATE GEOMETRY (COGO). IT IS BASED ON THE ORIGINAL DIGITALLY DRAWN TAX MAP PLATE BEARING THE OFFICIAL NEW JERSEY DIVISION TAXATION APPROVAL STAMP WITH APPROVAL DATE 10-16-2007 SERIAL NUMBER 914 AND SIGNATURES OF SIGNERS THOMAS J. REILLY, CHIEF, LOCAL PROPERTY, FIELD ASSISTANCE; SANTO C. DIDONATO, SUPERVISING FIELD REPRESENTATIVE. THIS TAX MAP PLATE HAS BEEN DIGITALLY UPDATED TO REFLECT CONDITIONS AS OF 7-22-2011. THE ORIGINAL DIGITALLY DRAWN TAX MAP PLATE WITH THE OFFICIAL APPROVAL STAMP IS ON FILE WITH REMINGTON, VERNICK & WALBERG ENGINEERS."

TAX MAP
CITY OF PLEASANTVILLE
ATLANTIC COUNTY NEW JERSEY
SCALE: 1" = 100' DATE: 6-17-2003
CRAIG F. REMINGTON LAND SURVEYOR LIC. NO. 23924
RV & W
REMINGTON, VERNICK & WALBERG ENGINEERS
24 GA 28048700
845 N. MAIN STREET, PLEASANTVILLE, NJ 08232
(609) 645-7100 FAX (609) 645-7076
WEB SITE ADDRESS: WWW.RVE.COM