

TAX MAP CITY OF PLEASANTVILLE

ATLANTIC COUNTY NEW JERSEY

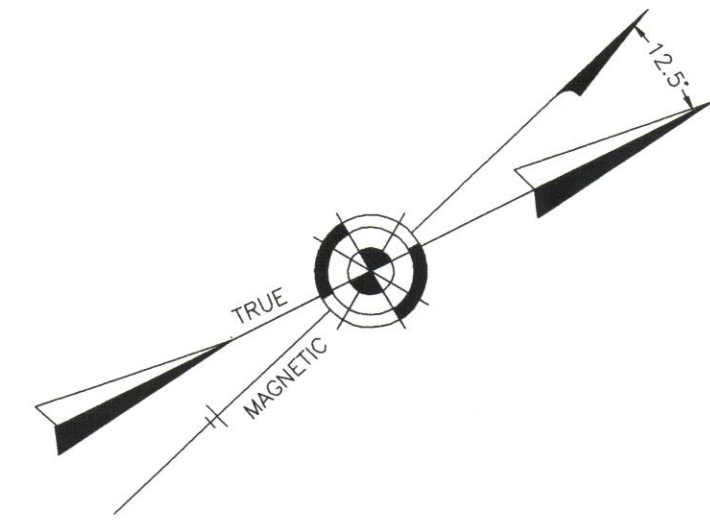
SCALE: 1" = 100' DATE: 6-17-2003

CRAIG F. REMINGTON LAND SURVEYOR LIC. NO. 23924



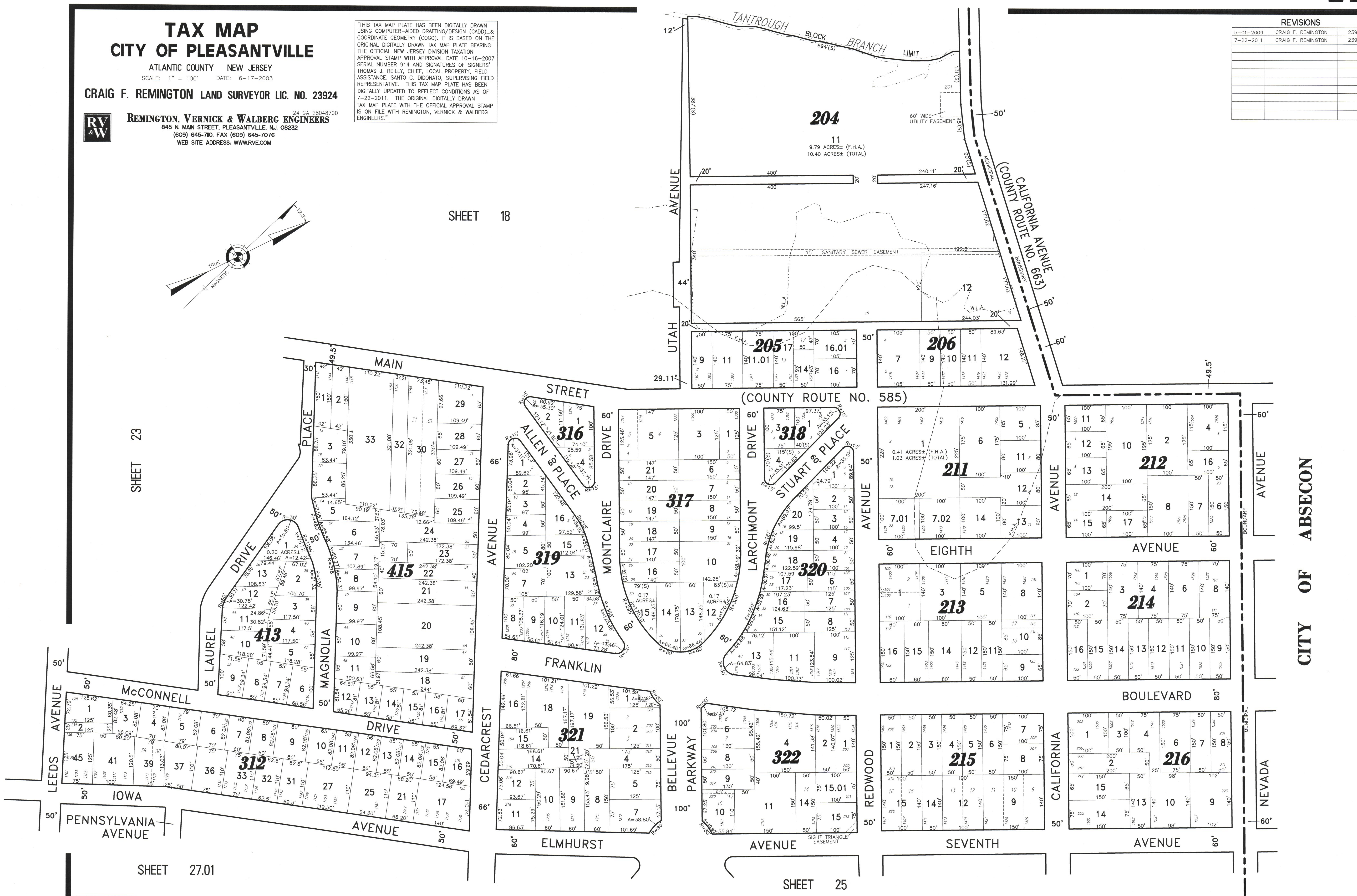
REMINGTON, VERNICK & WALBERG ENGINEERS
24 GA 28048700
845 N MAIN STREET, PLEASANTVILLE, NJ 08232
(609) 645-710, FAX (609) 645-7076
WEB SITE ADDRESS: WWW.RVWE.COM

"THIS TAX MAP PLATE HAS BEEN DIGITALLY DRAWN USING COMPUTER-AIDED DRAFTING/DESIGN (CADD) & COORDINATE GEOMETRY (COGO). IT IS BASED ON THE ORIGINAL DIGITALLY DRAWN TAX MAP PLATE BEARING THE OFFICIAL NEW JERSEY DIVISION TAXATION APPROVAL STAMP WITH APPROVAL DATE 10-18-2007 SERIAL NUMBER 914 AND SIGNATURES OF SIGNERS THOMAS J. REILLY, CHIEF, LOCAL PROPERTY, FIELD ASSISTANCE, SANTO C. DIDONATO, SUPERVISING FIELD REPRESENTATIVE. THIS TAX MAP PLATE HAS BEEN DIGITALLY UPDATED TO REFLECT CONDITIONS AS OF 7-22-2011. THE ORIGINAL DIGITALLY DRAWN TAX MAP PLATE WITH THE OFFICIAL APPROVAL STAMP IS ON FILE WITH REMINGTON, VERNICK & WALBERG ENGINEERS."



SHEET 18

REVISIONS		
5-01-2009	CRAIG F. REMINGTON	23924
7-22-2011	CRAIG F. REMINGTON	23924



SHEET 23

SHEET 27.01

SHEET 25

CITY OF ABSECON