

LEGEND  
 (6) ...INDICATES MAP PAGE NUMBER

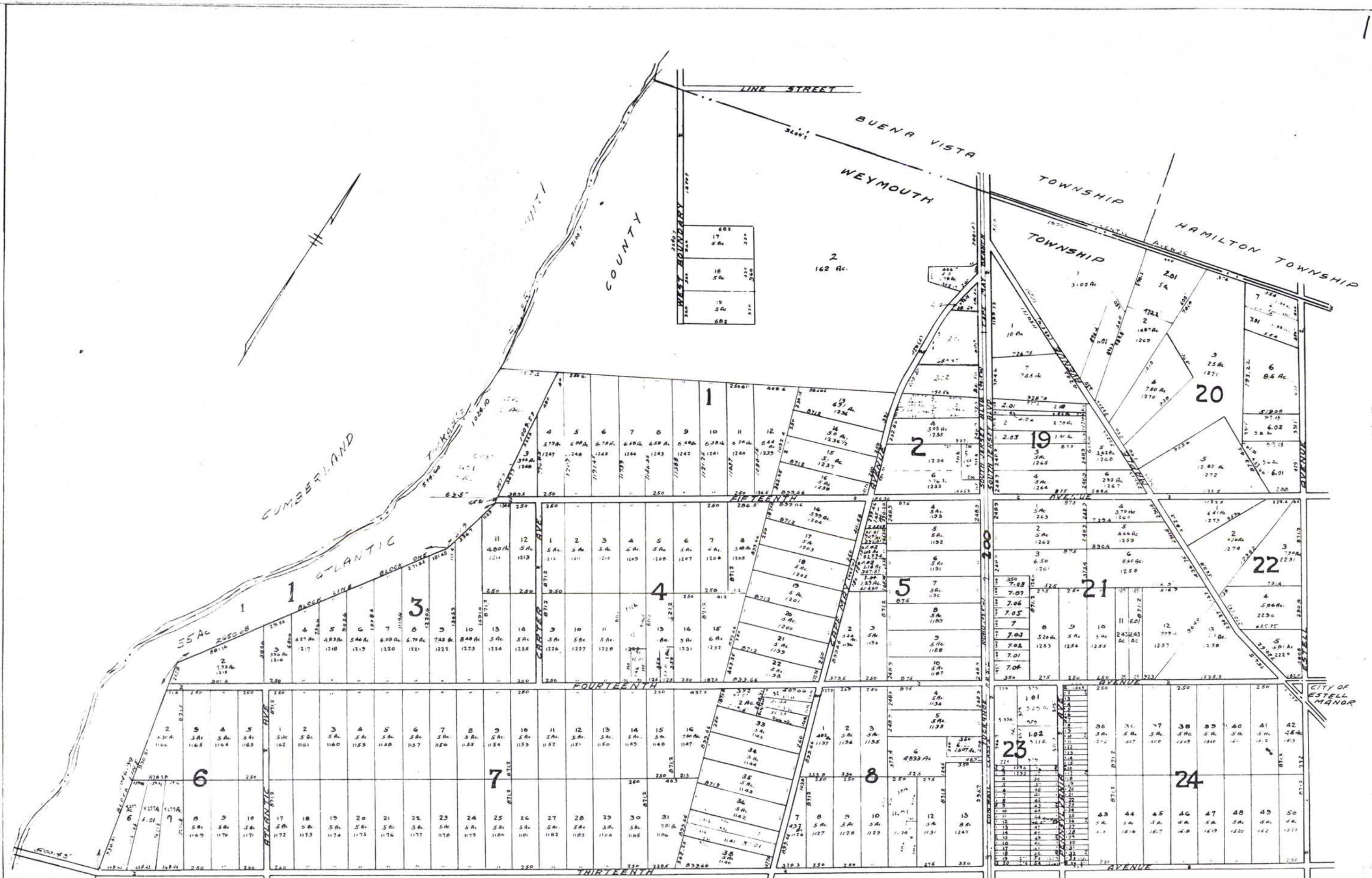
Proposed R.O.W. f. &

— 35'  
 — 45'



INDEX MAP  
 OF  
 WEYMOUTH TOWNSHIP  
 ATLANTIC COUNTY, NEW JERSEY

1111-1111

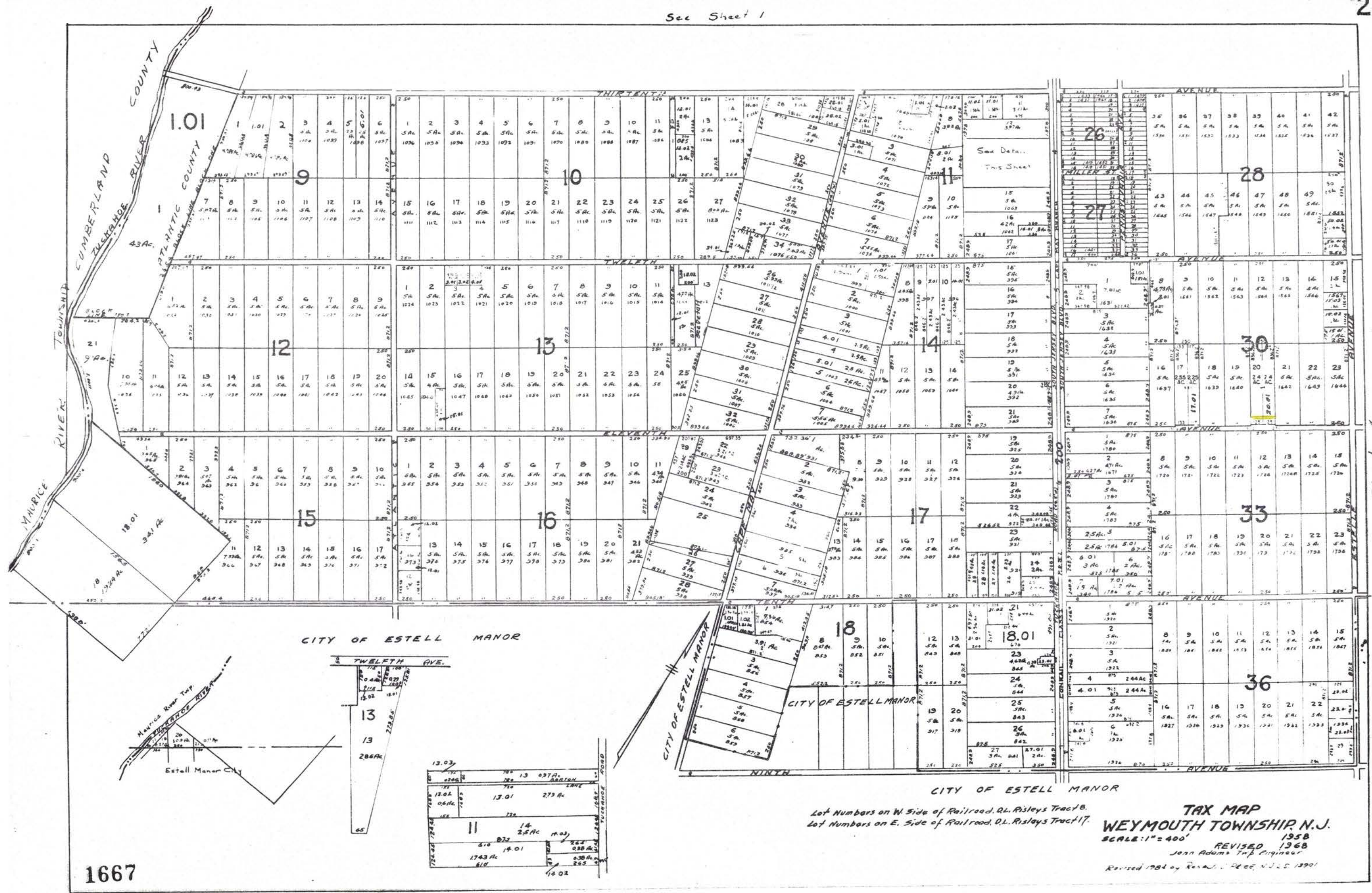


**TAX MAP**  
**WEYMOUTH TOWNSHIP N.J.**  
 SCALE: 1"=400'  
 Revised 1958  
 John Adams Township Engineer  
 Revised 1984 by Ronald J. Reed, N.J. 3901

Lot Numbers W. side of Railroad D.L. Risley Map Tract B  
 Lot Numbers E. side of Railroad D.L. Risley Maps Tracts B & 17  
 Lot Numbers Block 2-A South Jersey Land Transportation Company Map

**1666**

See Sheet 1

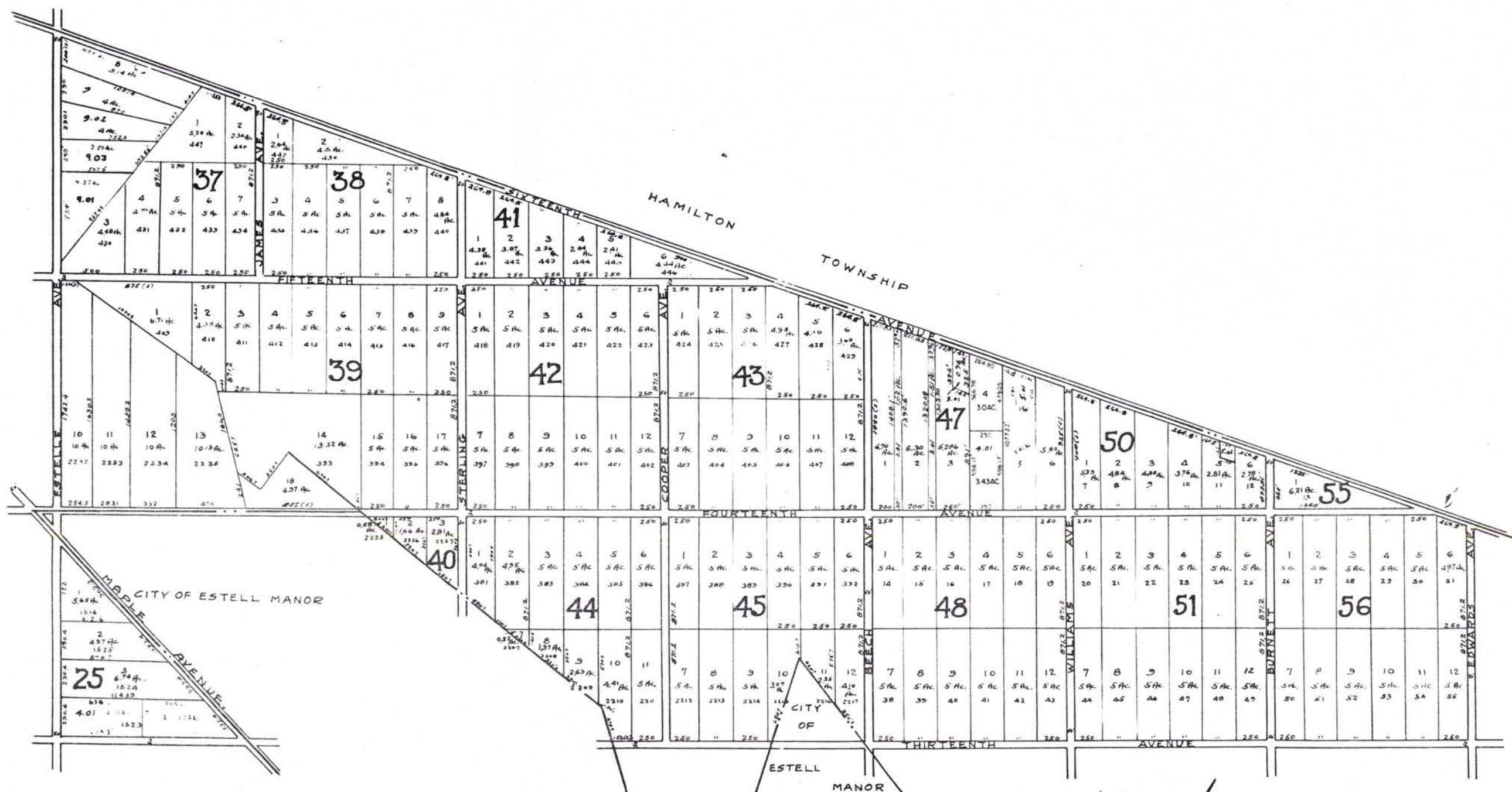


See Sheet A

**TAX MAP**  
**WEYMOUTH TOWNSHIP, N.J.**  
 SCALE: 1" = 400'  
 REVISED 1958  
 John Adams Trp. Engineer  
 Revised 1984 by Renald P. Rice, N.J.C.E. 13901

See Sheet 1

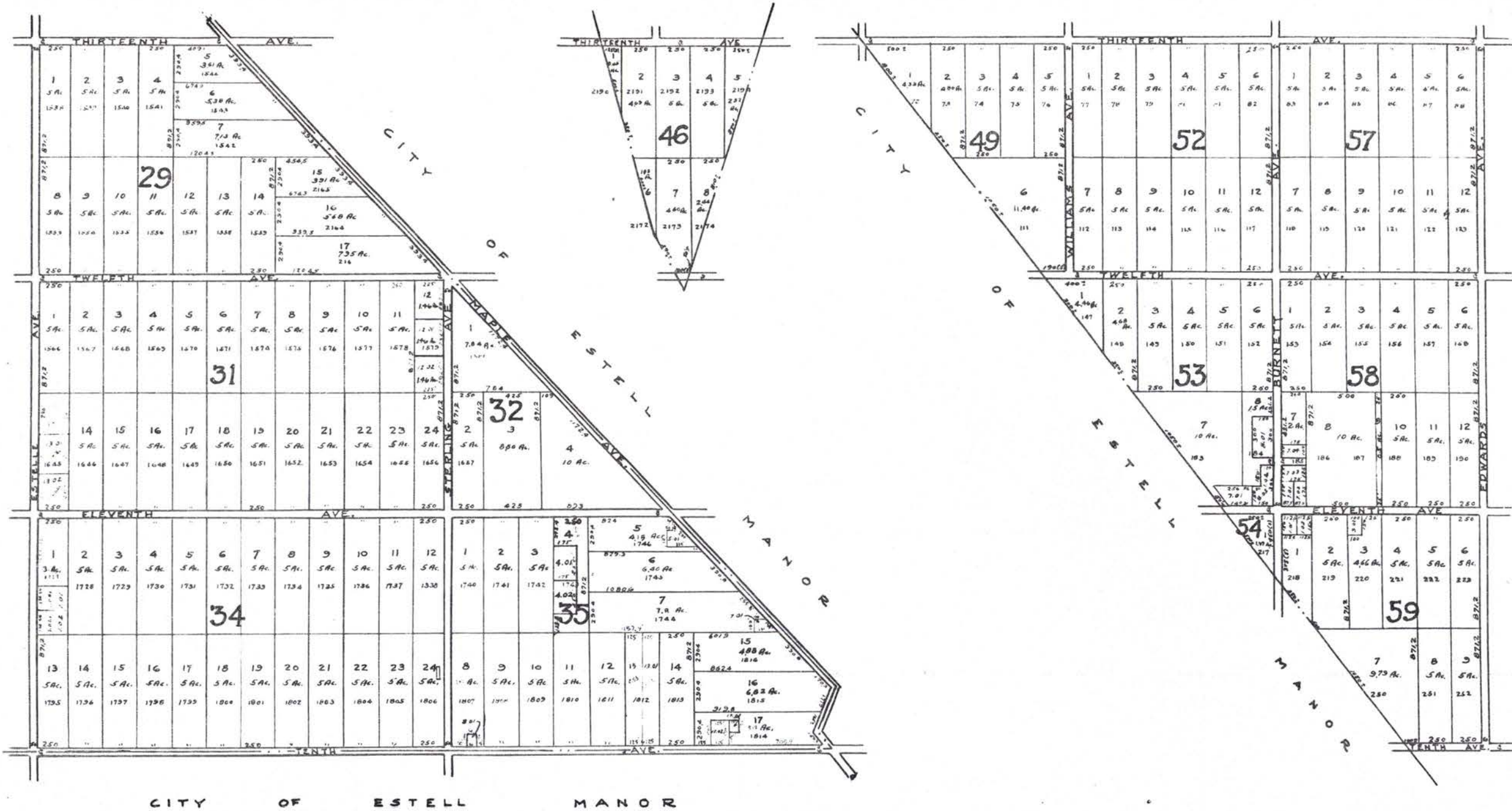
See Sheet 5



lots numbered 2232 to 2235  
 1614, 1623, 1524, 1525 DL Risleys Map Tract No. 17,  
 all other numbers A.G. Vautrinot Map. Walker Tract.

See Sheet 4

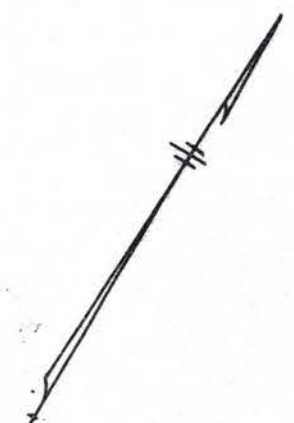
**TAX MAP**  
**WEYMOUTH TOWNSHIP, N.J.**  
 SCALE 1"=400'  
 1958  
 REVISED 1968  
 John Adams Twp. Engineer  
 Revised 1982 by ...  
**1668**



See Sheet 2

See Sheet 5

Lots Numbered 1538 to 2134 D.L. Risley Map Tract No. 17  
 Lots Numbered 72 to 252 A.G. Vautrinot Map Walker Tract



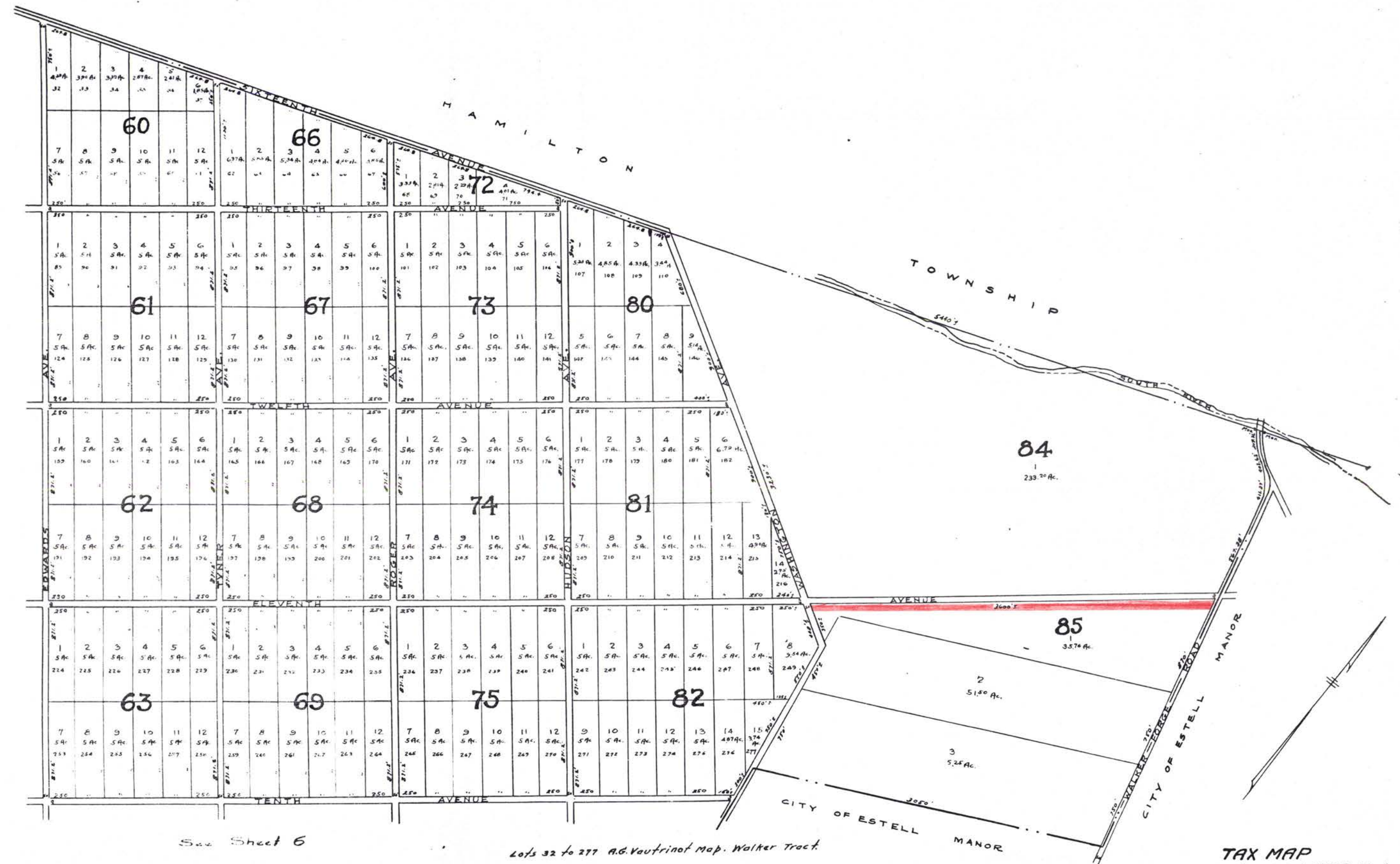
**TAX MAP**  
**WEYMOUTH TOWNSHIP, N.J.**  
 SCALE: 1"=400'  
 REVISED 1958  
 John Adams Twp. Engineer  
 Revised 1968 by Ronald J. Price, N.J.L.S. 13901

See Sheet 3

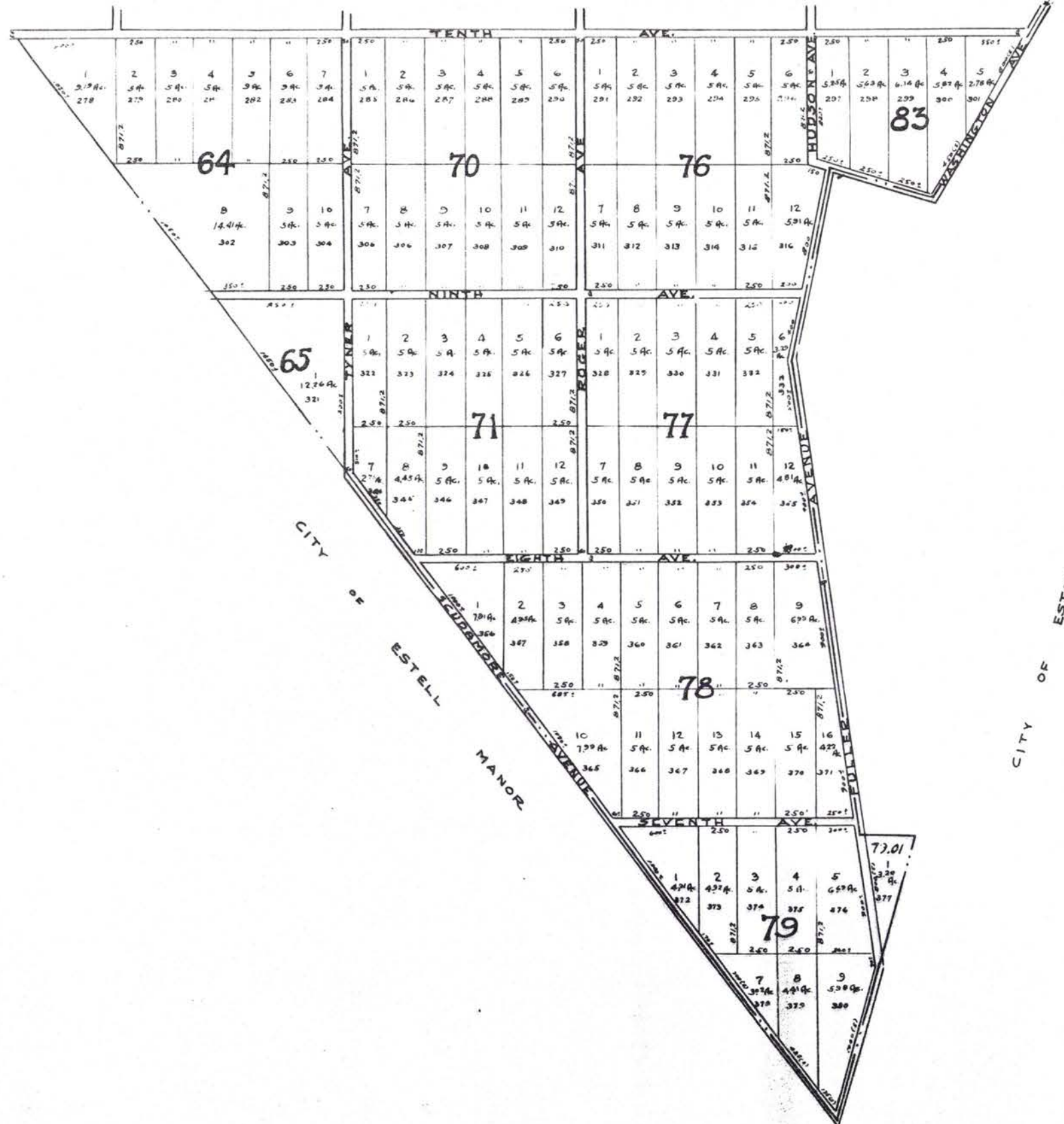
See Sheet 4

See Sheet 6

Lots 32 to 277 A.G. Vautrinot Map, Walker Tract.



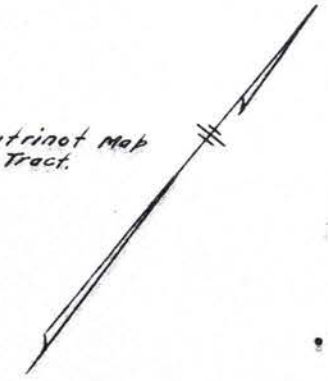
**TAX MAP**  
**WEYMOUTH TOWNSHIP, N.J.**  
 SCALE: 1" = 400'  
 1958  
 REVISED 1968  
 John Adams Twp. Engineer



CITY OF ESTELL MANOR

CITY OF ESTELL MANOR

Lots Numbered 278 to 380 A.G. Vautrinot Map Walker Tract.

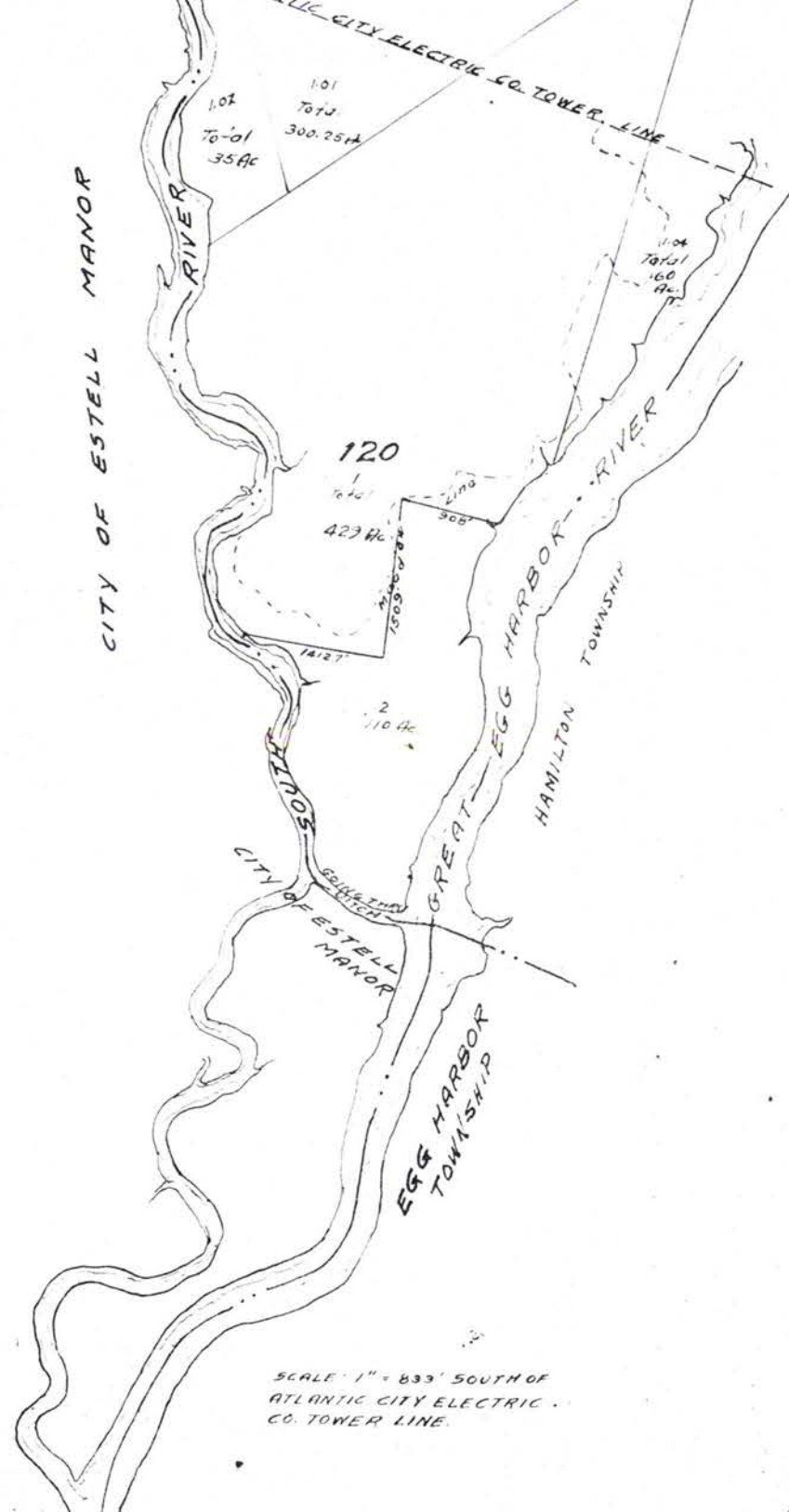


**TAX MAP**  
**WEYMOUTH TOWNSHIP, N.J.**  
 SCALE: 1"=400'  
 REVISED 1958  
 1968  
 John Adams Twp. Engineer  
 Revised 1984 by Ronald J. Rice, N.J.L.E. 13901



HAMILTON TOWNSHIP

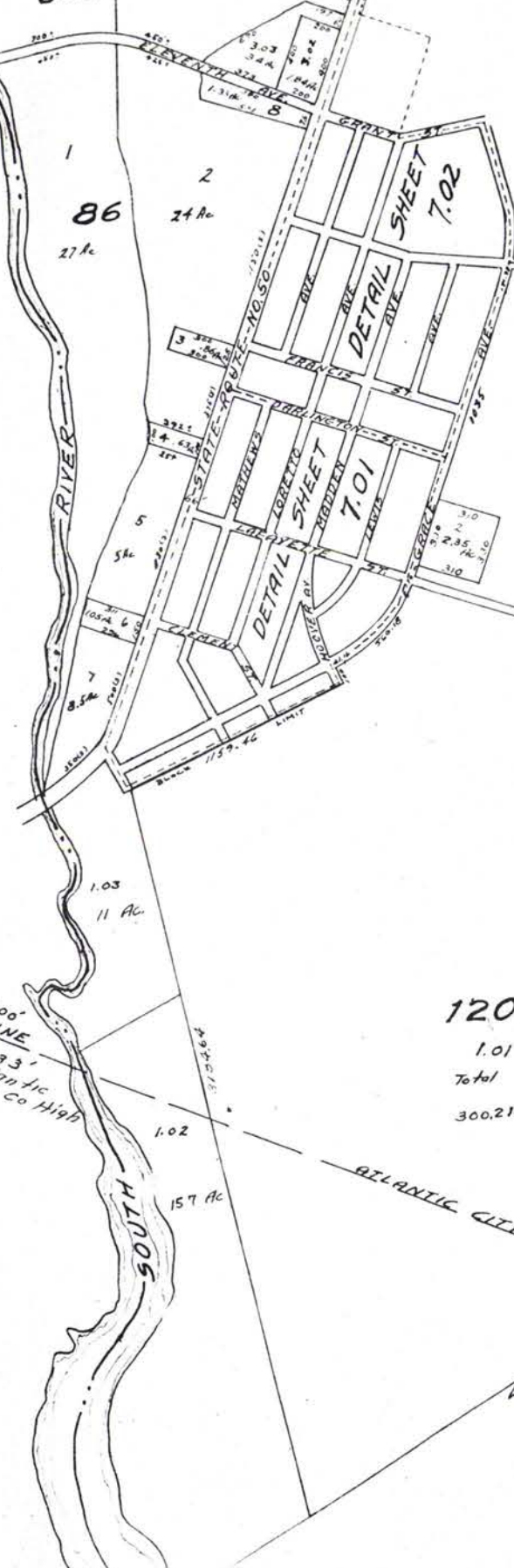
Scale 1" = 400'  
MATCH LINE  
Scale 1" = 833'



SCALE 1" = 833' SOUTH OF ATLANTIC CITY ELECTRIC CO. TOWER LINE.

CITY OF ESTELL MANOR

Scale 1" = 400'  
MATCH LINE  
Scale 1" = 833'  
South of Atlantic City Electric Co High Line



HAMILTON TOWNSHIP

120  
1.01  
Total  
300.215 Ac.

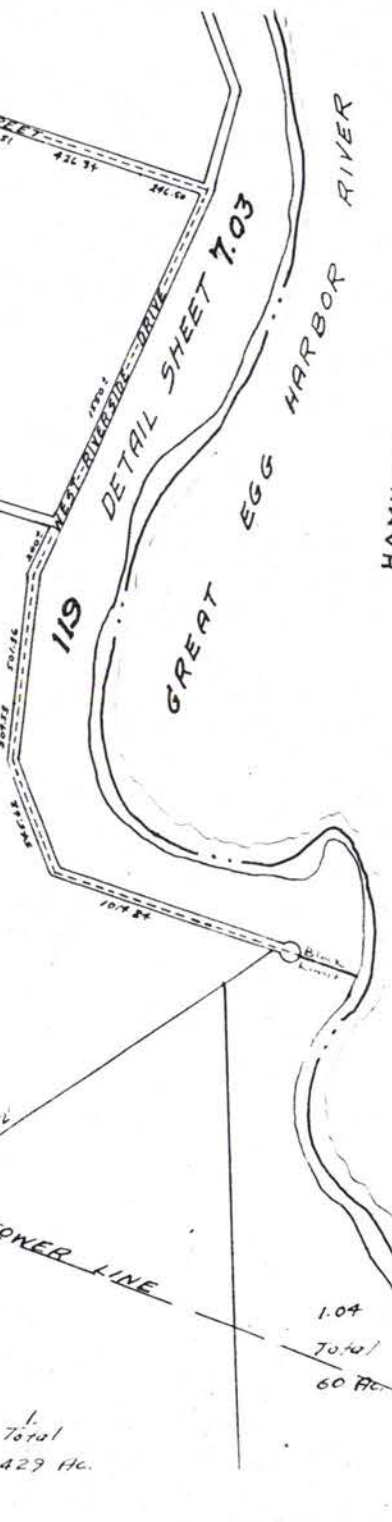
ATLANTIC CITY ELECTRIC CO. TOWER LINE

119  
See Sheet 703

121

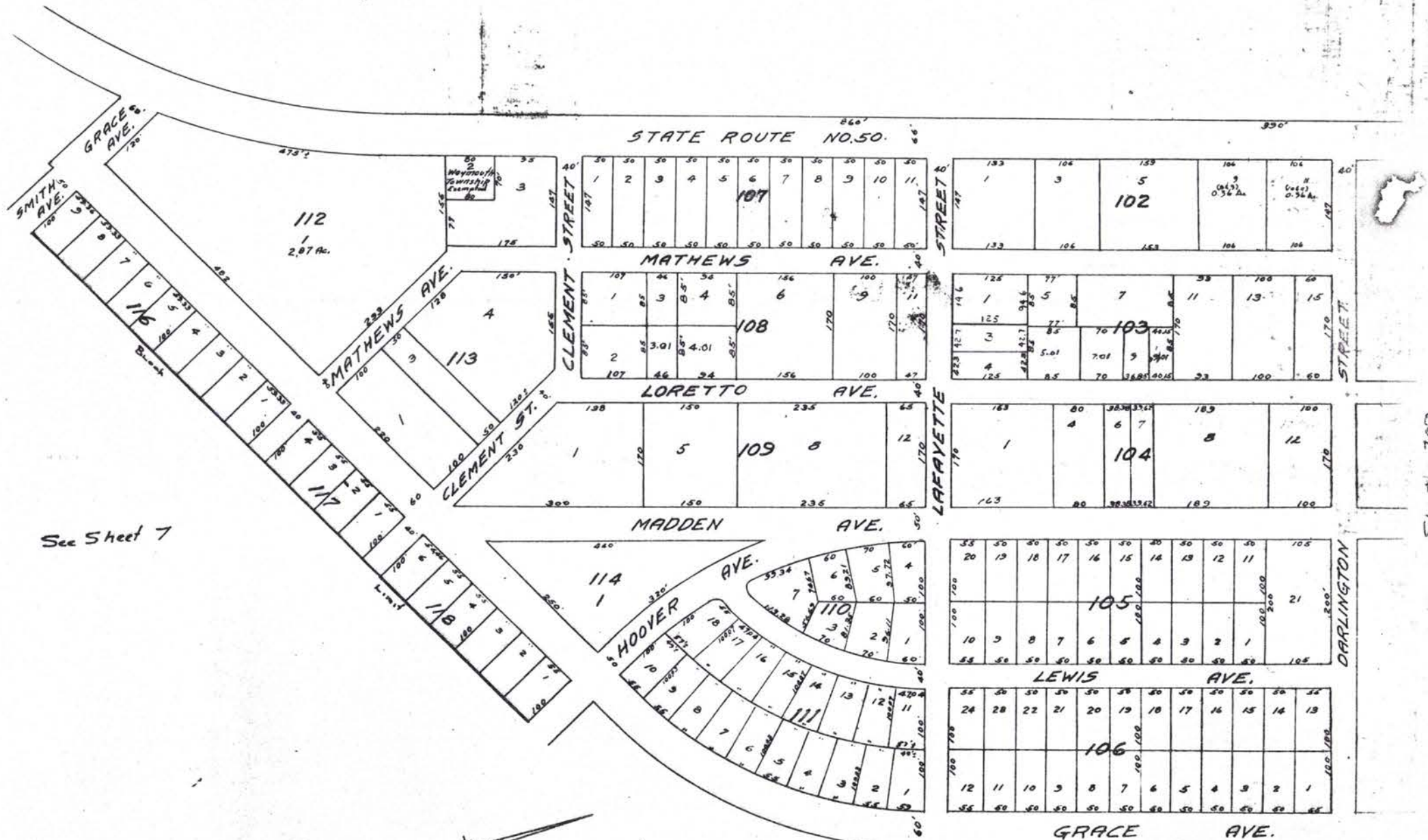
1.  
Total  
429 Ac.

HAMILTON TOWNSHIP



TAX MAP  
WEYMOUTH TOWNSHIP, N.J.  
SCALE 1" = 400' REVISION 1958  
Revised October 1964 JOHN ADAMS, INC. ENGINEERS  
Revised 1984 by RONALD J. PRICE, N.J.L.S. 12901

See Sheet 7



See Sheet 7

Sheet 707

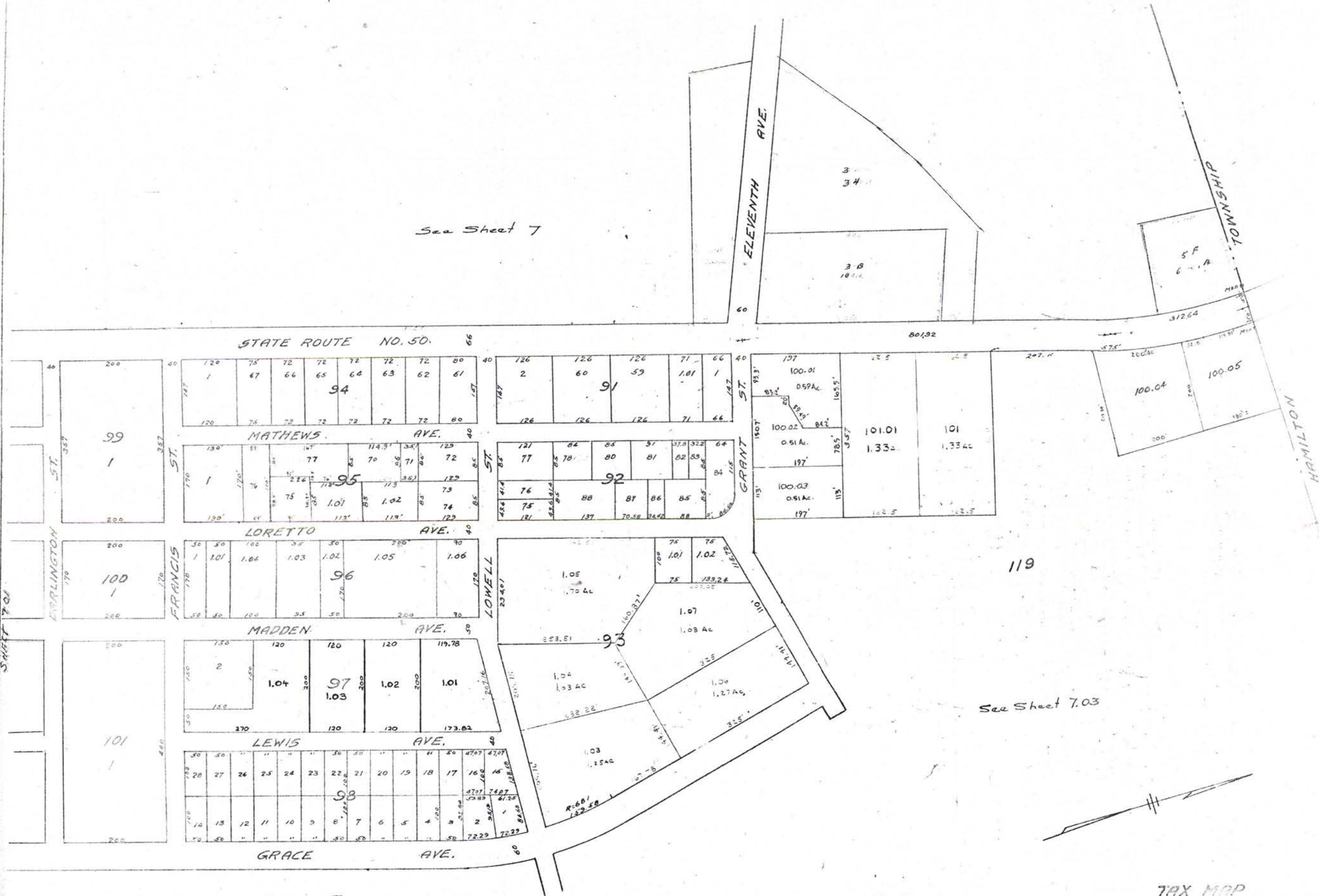
Block 110 Block 2 Map of Balcovilla Manor

111	1	"	"	"	"
116	5	"	"	"	"
117	4	"	"	"	"
118	3	"	"	"	"
105	3	"	"	"	"
106	2	"	"	"	"

Balcovilla Home Sites Sec. B.

See Sheet 7  
**TAX MAP**  
**WEYMOUTH TOWNSHIP**  
 SCALE: 1" = 100'  
 REVISED: 1968  
 John Adams Township Engineer  
 Revised 1969 by  
 RONALD J. PRICE

See Sheet 7

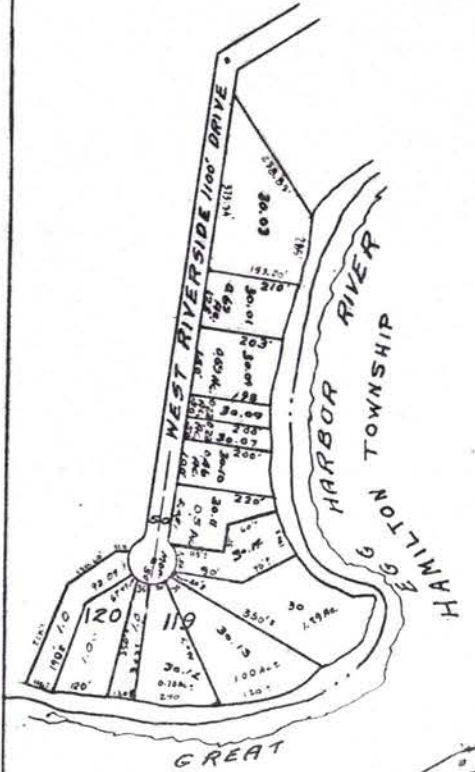


See Sheet 7.03

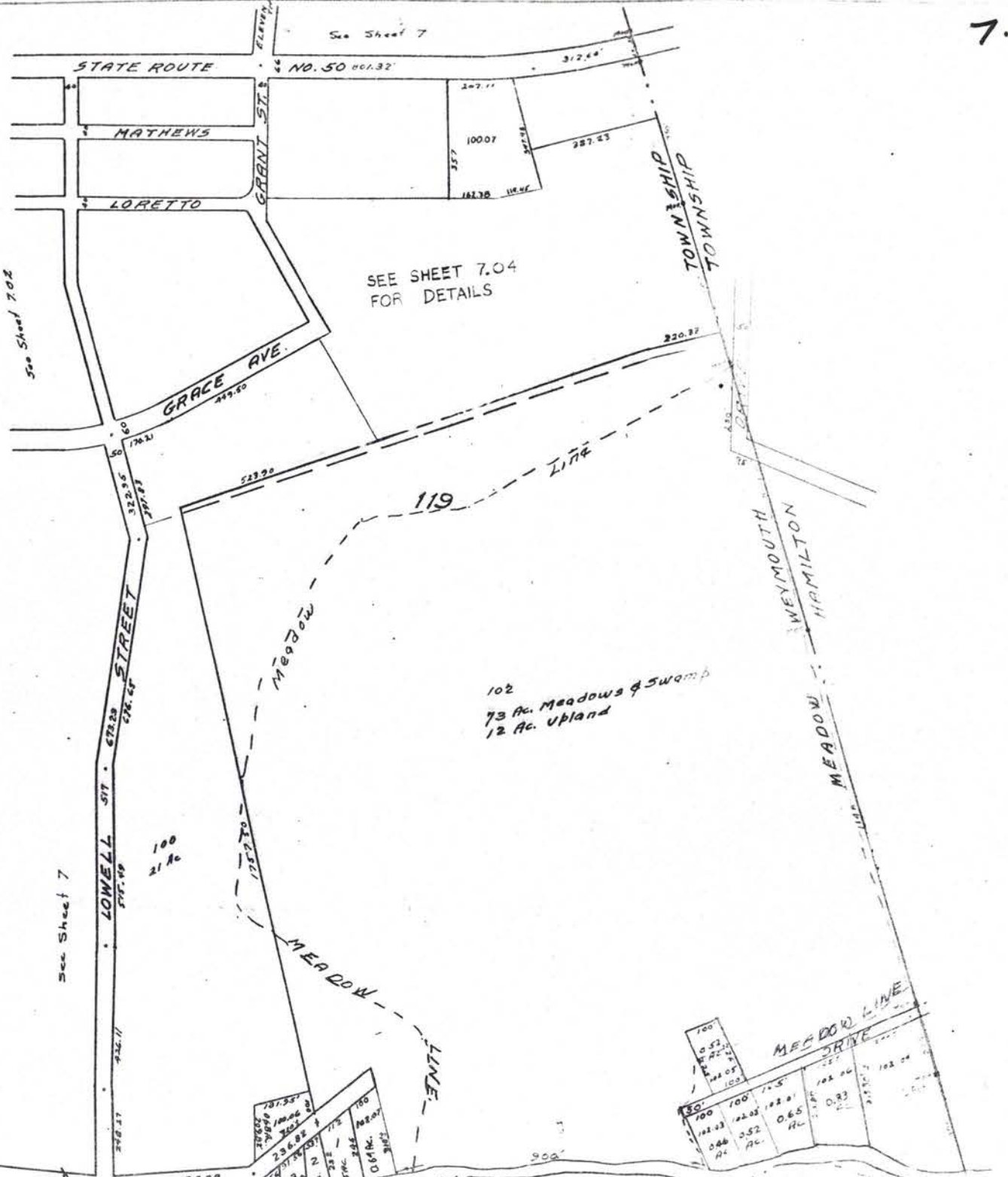
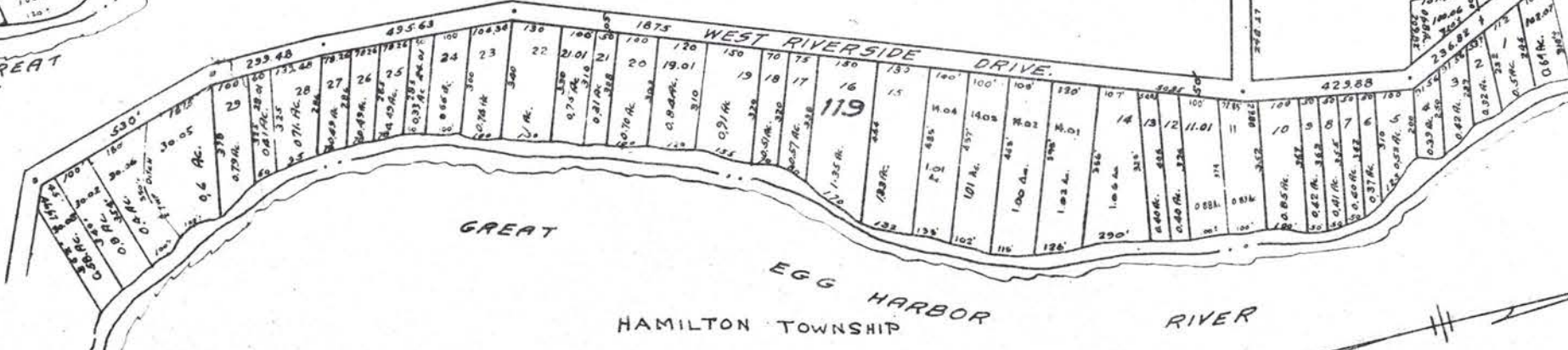
See Sheet 7

Block 2B - Block 1 Map of Belcoville Home Sites Sec. A.

TAX MAP  
 WEYMOUTH TOWNSHIP, N.J.  
 SCALE: 1"=100'



1675



TAX MAP  
 WEYMOUTH TOWNSHIP, N.J.  
 SCALE 1" = 200'  
 Revised October 1963  
 John Adams, Inc. Engineer  
 Revised 1984 by Ronald J. ...

SEE SHEET 7.03



TAX MAP  
 WEYMOUTH TOWNSHIP, N.J.  
 SCALE 1" = 50'  
 MAY, 1986

RONALD J. PRICE N.J. L.S. 13901

