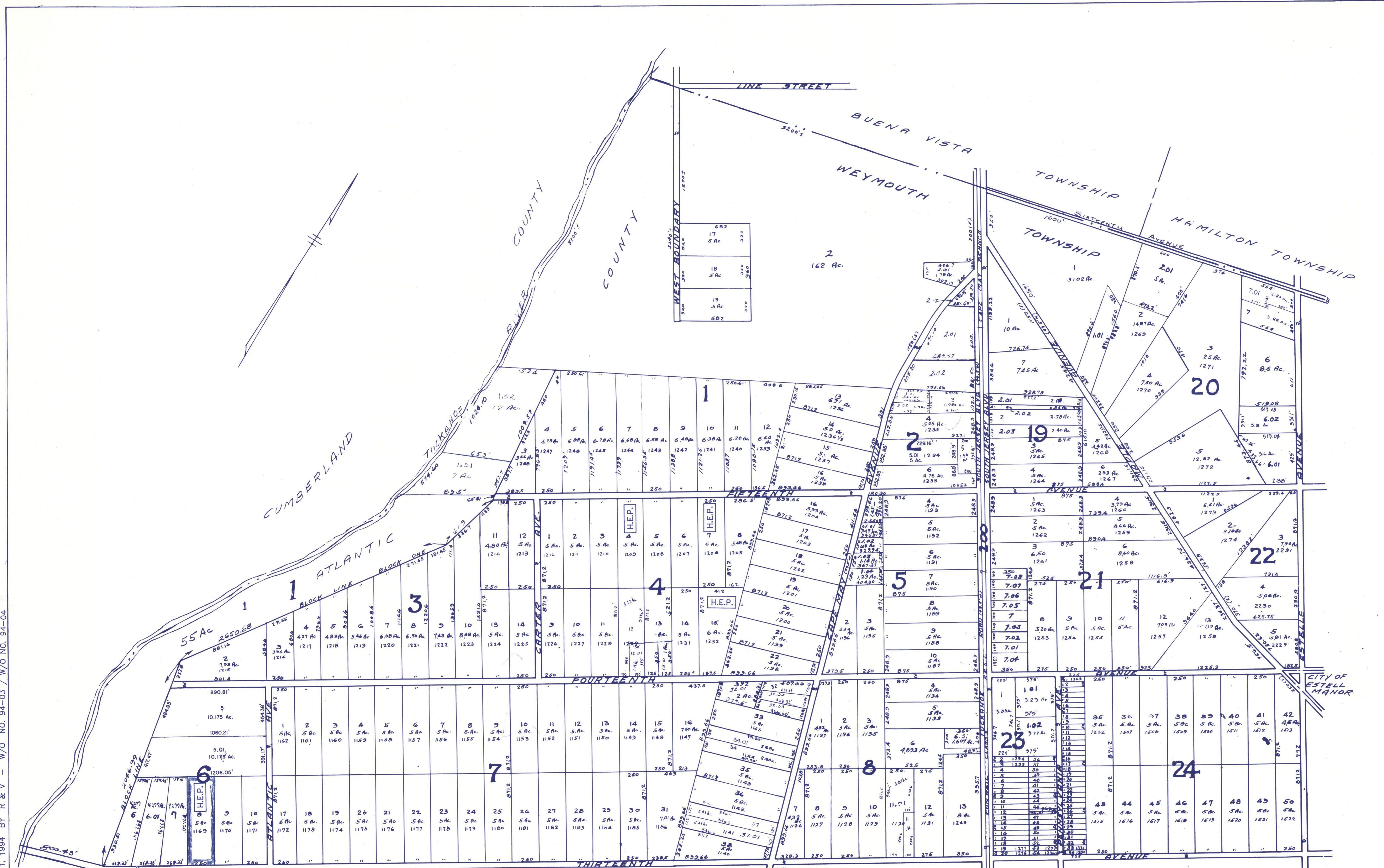


REVISED TO DEC. 1, 1994 BY R & V - W/O NO. 94-03 / W/O NO. 94-04



NOTE:
 H.E.P. IS IN ACCORDANCE WITH THE WEYMOUTH TOWNSHIP
 HOMESTEAD EXCHANGE PROGRAM (13-9.21). DEVELOPABLE
 LOTS, AND THE SHADED LOTS ARE THE RESTRICTED LOTS.

Lot Numbers W. side of Railroad D.L. Risley Map Tracts
 Lot Numbers E. side of Railroad D.L. Risley Maps
 Tracts 8-17
 Lot Numbers Block 2-A South Jersey Land Transportation
 Company Map.

TAX MAP
 WEYMOUTH TOWNSHIP N.J.
 SCALE: 1" = 400'
 Revised 1968
 John Adams, Map Engineer
 Revised 1984 by RONALD J. PRICE, N.L.S. 13901

See Sheet 2

See Sheet 3