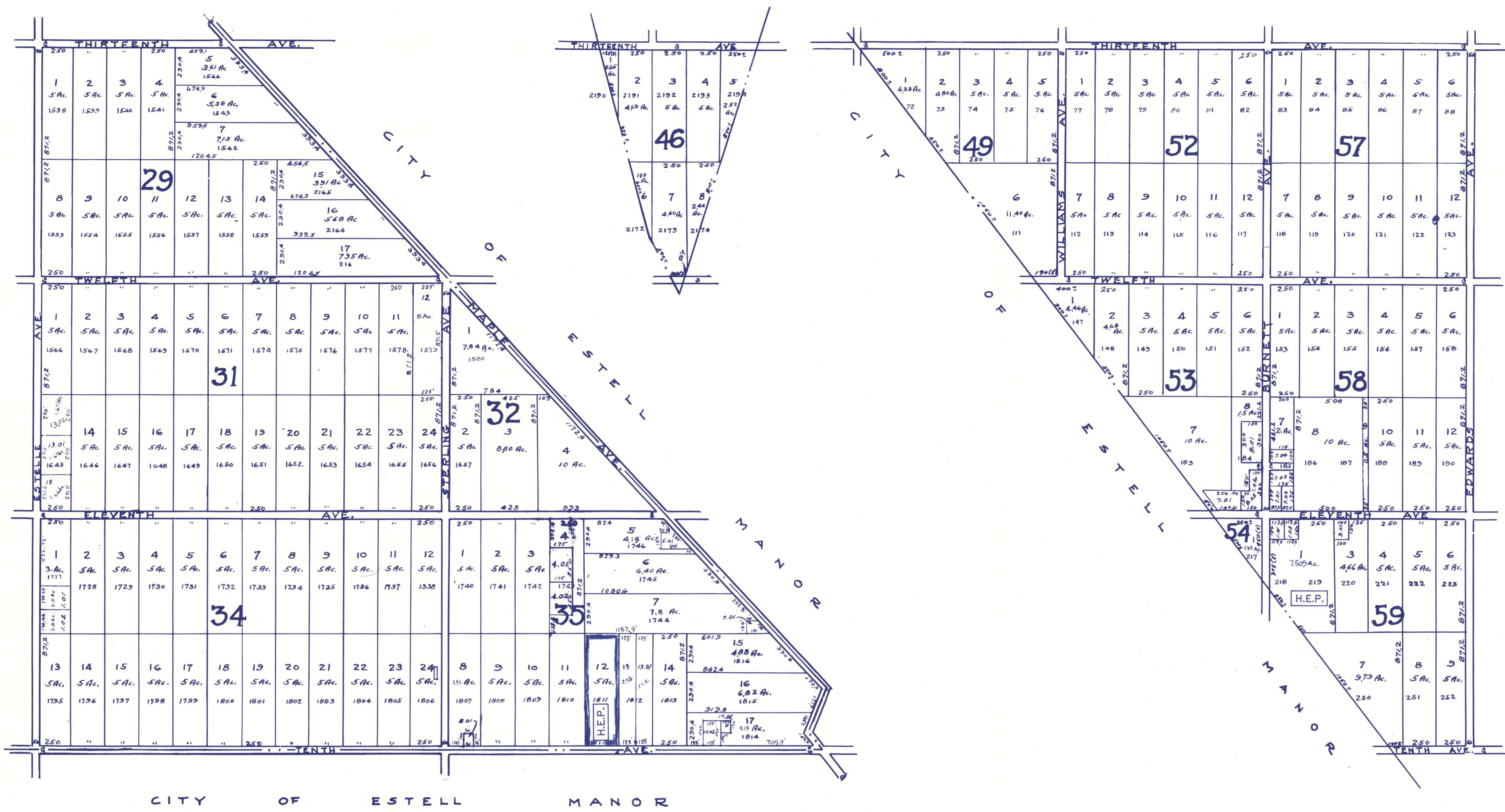


See Sheet 3



See Sheet 2

See Sheet 5

REVISED TO DEC. 1, 1994 BY R & V - W/O NO. 94-04

Lots Numbered 1538 to 2134 D.L. Risley Map Tract No. 17  
 Lots Numbered 72 to 252 a.g. Vautrinot Map Walker Tract

NOTE:  
 H.E.P. IS IN ACCORDANCE WITH THE WEYMOUTH TOWNSHIP  
 HOMESTEAD EXCHANGE PROGRAM (13-9.21). DEVELOPABLE  
 LOTS, AND THE SHADED LOTS ARE THE RESTRICTED LOTS.

**TAX MAP**  
**WEYMOUTH TOWNSHIP, N.J.**  
 SCALE: 1"=400'  
 REVISED 1958  
 John Adams Twp. Engineer  
 Revised 1986 by RONALD J. PRICE, N.J.L.S. 13701