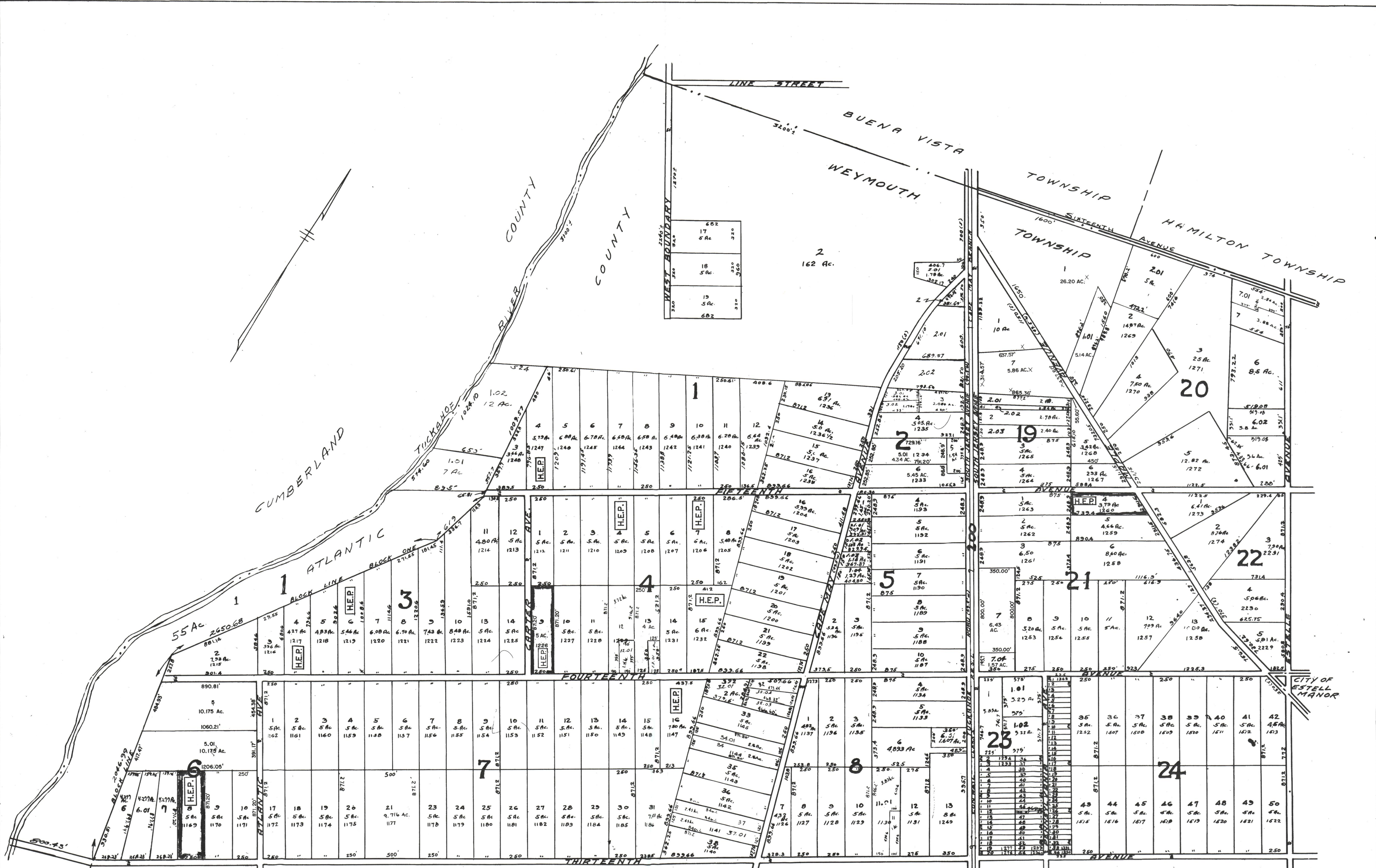


MAY 21, 1998 BY R & V - W/O NO. 98-02  
 TO DEC. 31, 1997 BY R & V - W/O NO. 97-02 / No. 97-05  
 REVISOR TO NOV. 15, 1996 BY R & V - W/O NO. 96-01 / No. 96-02 / No. 96-03  
 REVISOR TO APRIL 15, 1996 BY R & V - W/O NO. 95-02 / W/O NO. 95-05  
 REVISOR TO DEC. 31, 1995 BY R & V - W/O NO. 94-03 / W/O NO. 94-04  
 REVISOR TO DEC. 1, 1994 BY R & V - W/O NO. 94-03 / W/O NO. 94-04



**NOTE:**  
 H.E.P. IS IN ACCORDANCE WITH THE WEYMOUTH TOWNSHIP  
 HOMESTEAD EXCHANGE PROGRAM (13-9.21). DEVELOPABLE  
 LOTS, AND THE SHADED LOTS ARE THE RESTRICTED LOTS.

Lot Numbers W. side of Railroad D.L. Risley Map Tract B  
 Lot Numbers E. side of Railroad D.L. Risley Maps -  
 Tracts B & 17  
 Lot Numbers Block 2-A South Jersey Land Transportation  
 Company Map.

**TAX MAP**  
**WEYMOUTH TOWNSHIP, N.J.**  
 SCALE: 1" = 400'  
 Revised 1968  
 John Adams, Inc. Engineer  
 Revised 1984 by RONALD J. PRICE, N.L.S. 13901

See Sheet 2

See Sheet 3