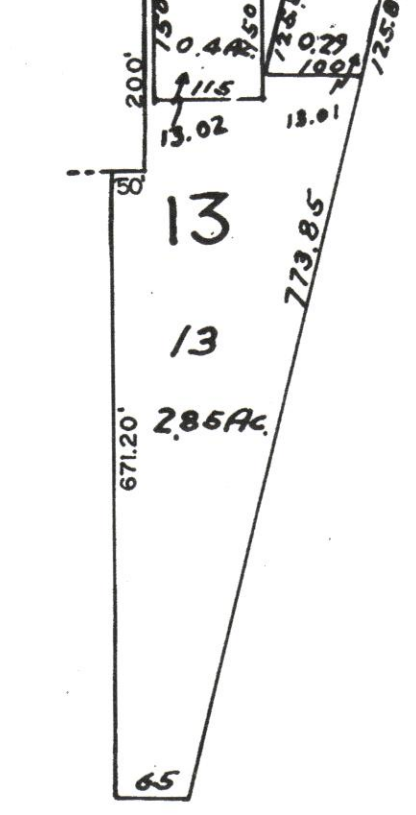


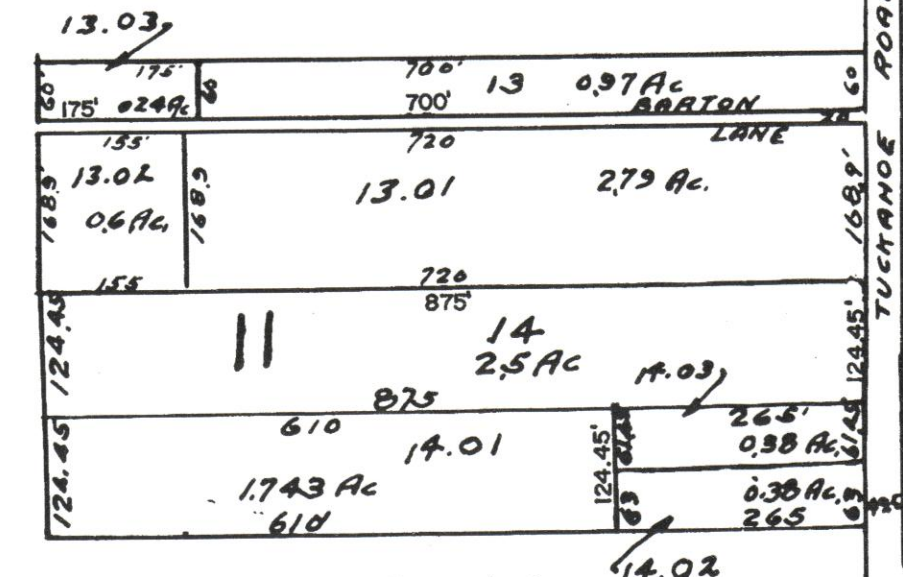
REVISED TO NOV. 15, 1996 BY RAV
 W/O NO. 96-04, 96-05, 96-06, 96-07
 REVISED TO APRIL 15, 1995 BY RAV
 W/O NO. 95-01, 95-04, 95-05, 95-06
 REVISED TO DEC. 31, 1994 BY RAV
 W/O NO. 94-02, 94-03, 94-04

CITY OF ESTELL MANOR

TWELFTH AVE.



SCALE: 1" = 200'



SCALE: 1" = 200'

NOTE:
 H.E.P. IS IN ACCORDANCE WITH THE WEYMOUTH TOWNSHIP
 HOMESTEAD EXCHANGE PROGRAM (13-9.21). DEVELOPABLE
 LOTS, AND THE SHADED LOTS ARE THE RESTRICTED LOTS.

Lot Numbers on W. Side of Railroad, D.L. Risley's Tract B.
 Lot Numbers on E. Side of Railroad, D.L. Risley's Tract A.

CITY OF ESTELL MANOR

TAX MAP
 WEYMOUTH TOWNSHIP, N.J.
 1958
 REVISION 1968
 John Adams, Trp. Engineer
 Revised 1982 by RONALD J. PRICE, N.J.L.S. 19901