

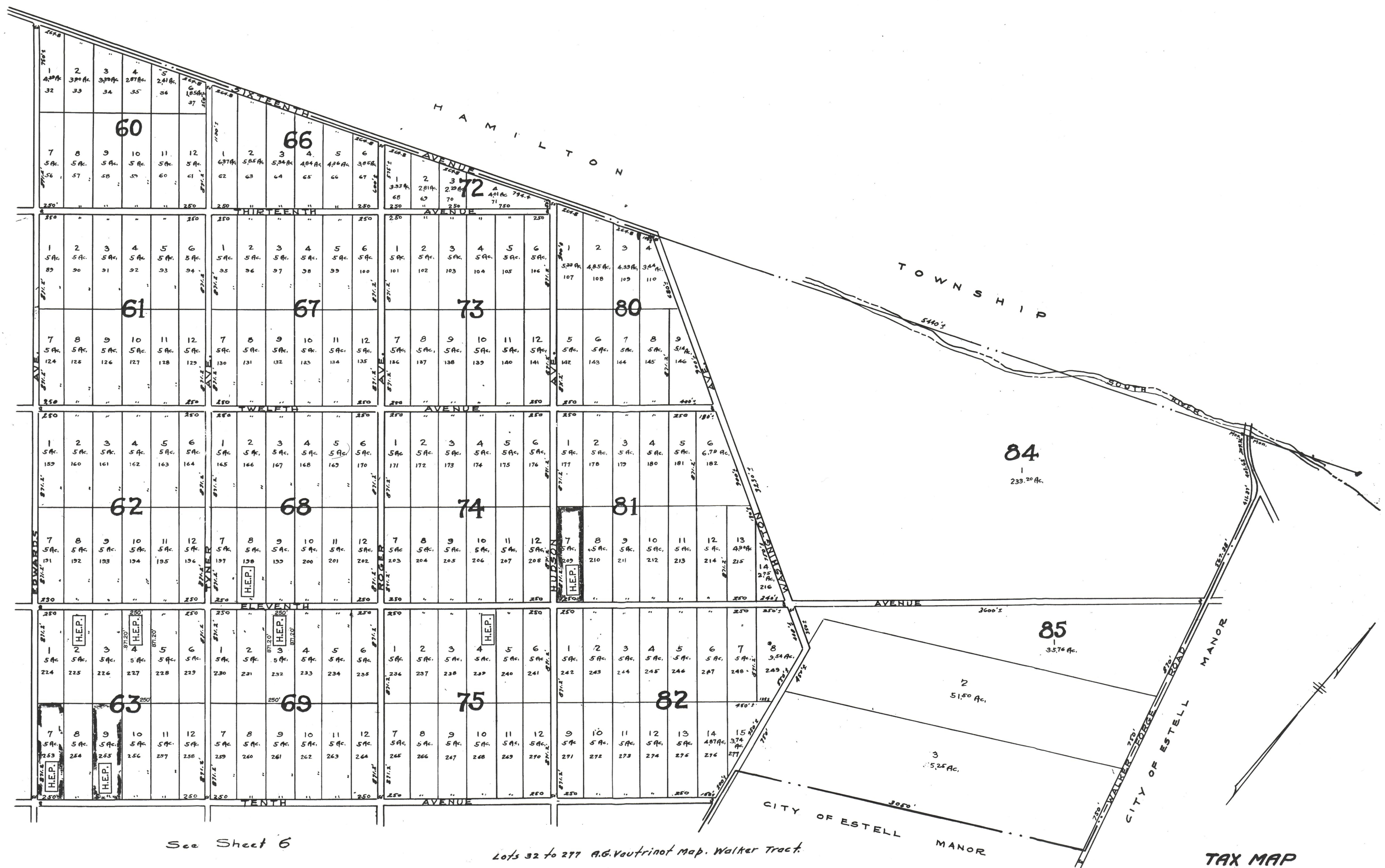
REVISED TO APRIL 15, 1996 BY R.&V  
REVISED TO DEC. 31, 1995 BY R & V — W/O NO. 95-04/W/O 95-05  
REVISED TO DEC. 1, 1994 BY R & V — W/O NO. 94-04

See Sheet 3

See Sheet 4

See Sheet 6

Lots 32 to 297 A.G. Vautrinot map, Walker Tract.



NOTE:  
[H.E.P.] IS IN ACCORDANCE WITH THE WEYMOUTH TOWNSHIP  
HOMESTEAD EXCHANGE PROGRAM (13-9.21). DEVELOPABLE  
LOTS, AND THE SHADED LOTS ARE THE RESTRICTED LOTS.

**TAX MAP**  
**WEYMOUTH TOWNSHIP, N.J.**  
SCALE: 1"=400'  
REVISED 1958  
John Adams Twp. Engineer  
Revised 1984 by RONALD J. PRICE, N.J.L.S. 1990