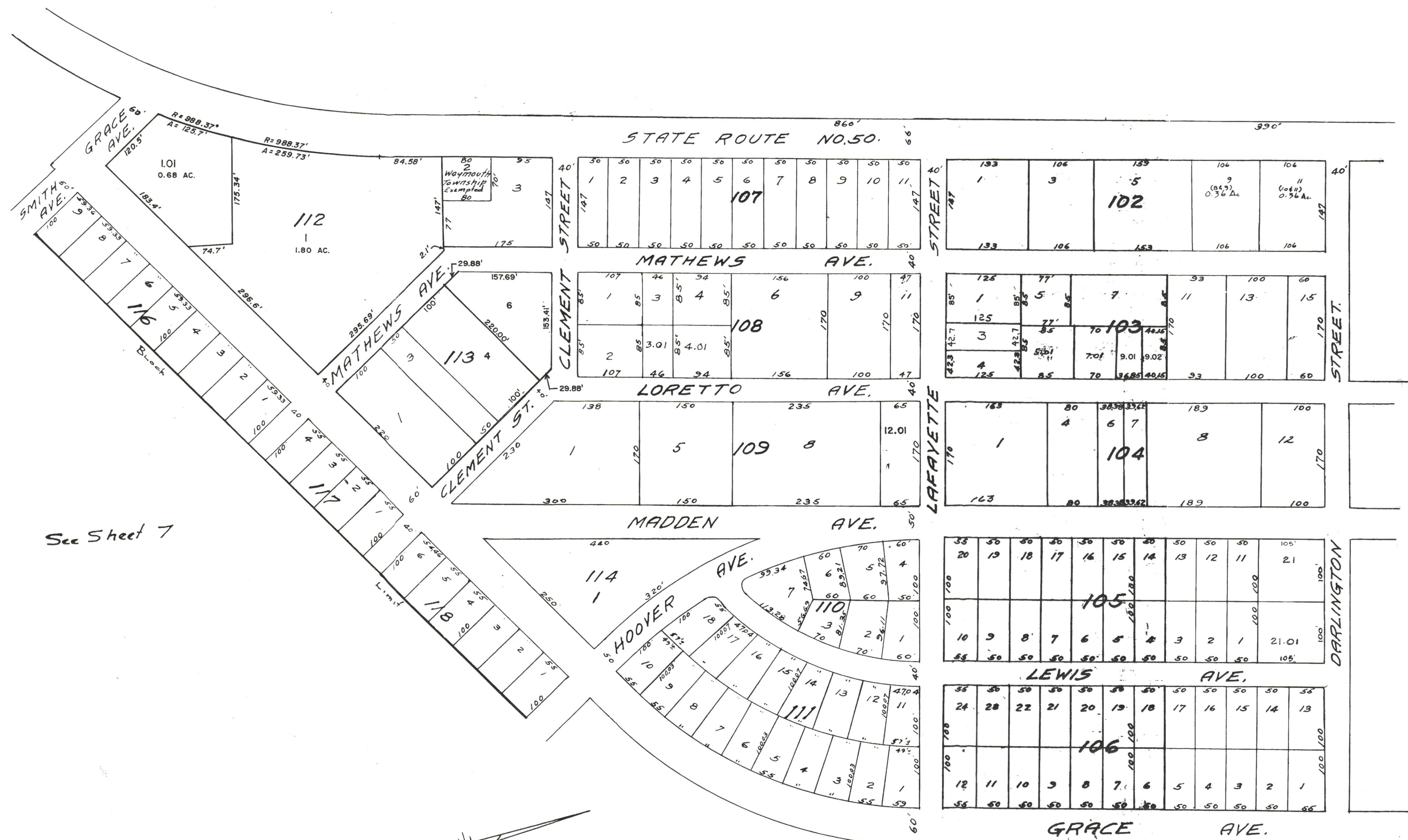


See Sheet 7



See Sheet 7

See Sheet 7.02

REVISED TO DEC. 31, 1997 BY R.B.V.
 REVISED TO NOV. 15, 1996 BY R.B.V. - W/O No. 96-09
 REVISED TO APRIL 15, 1996 BY R.B.V.
 REVISED TO DEC. 1, 1994 BY R & V - W/O NO. 94-01

NOTE:
 H.E.P. IS IN ACCORDANCE WITH THE WEYMOUTH TOWNSHIP
 HOMESTEAD EXCHANGE PROGRAM (13-9.21). DEVELOPABLE
 LOTS, AND THE SHADED LOTS ARE THE RESTRICTED LOTS.

Block 110	Block 2	Map of Balcovilla Manor	See Sheet 7
" 111	" 1	" " " " " "	" " " " " "
" 116	" 5	" " " " " "	" " " " " "
" 117	" 4	" " " " " "	" " " " " "
" 118	" 3	" " " " " "	" " " " " "
" 105	" 3	" " Balcovilla Home Sites Sec. A	" " " " " "
" 106	" 2	" " " " " "	" " " " " "

TAX MAP
WEYMOUTH TOWNSHIP, N.J.
 SCALE: 1"=100'
 REVISED 1958
 1968
 John Adams Township Engineer
 Revised 1984 by
 RONALD J. PRICE H.J.L.S. (390)