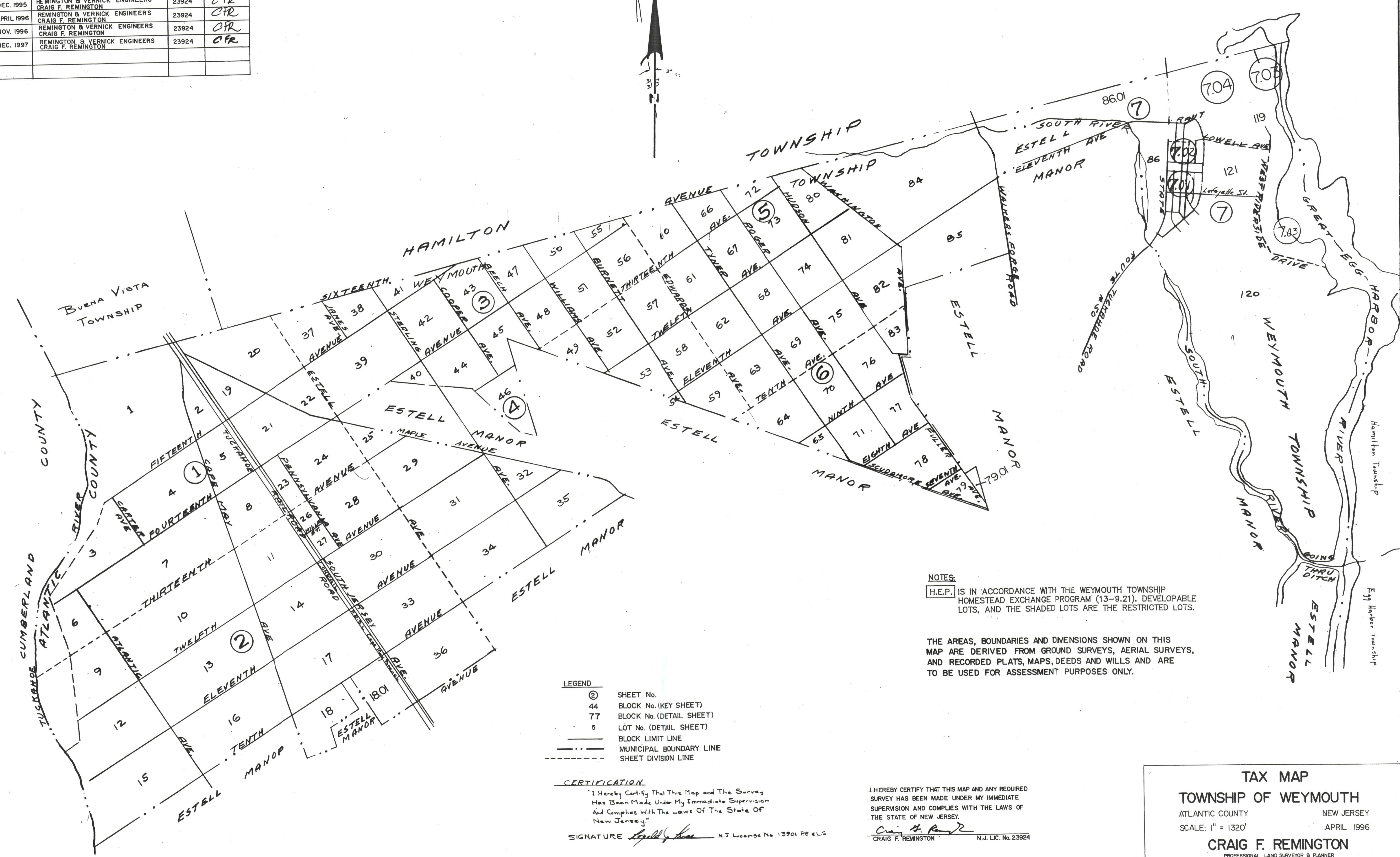


REVISIONS			
DATE	NAME	LIC. No.	INITIALS
DEC. 1994	REMINGTON & VERNICK ENGINEERS CRAIG F. REMINGTON	23924	CFR
DEC. 1995	REMINGTON & VERNICK ENGINEERS CRAIG F. REMINGTON	23924	CFR
APRIL 1996	REMINGTON & VERNICK ENGINEERS CRAIG F. REMINGTON	23924	CFR
NOV. 1996	REMINGTON & VERNICK ENGINEERS CRAIG F. REMINGTON	23924	CFR
DEC. 1997	REMINGTON & VERNICK ENGINEERS CRAIG F. REMINGTON	23924	CFR



NOTES:
 H.E.P. IS IN ACCORDANCE WITH THE WEYMOUTH TOWNSHIP HOMESTEAD EXCHANGE PROGRAM (13-9.21). DEVELOPABLE LOTS, AND THE SHADED LOTS ARE THE RESTRICTED LOTS.

THE AREAS, BOUNDARIES AND DIMENSIONS SHOWN ON THIS MAP ARE DERIVED FROM GROUND SURVEYS, AERIAL SURVEYS, AND RECORDED PLATS, MAPS, DEEDS AND WILLS AND ARE TO BE USED FOR ASSESSMENT PURPOSES ONLY.

- LEGEND**
- ② SHEET No.
 - 44 BLOCK No. (KEY SHEET)
 - 77 BLOCK No. (DETAIL SHEET)
 - 5 LOT No. (DETAIL SHEET)
 - BLOCK LIMIT LINE
 - - - MUNICIPAL BOUNDARY LINE
 - - - SHEET DIVISION LINE

CERTIFICATION
 I Herby Certify That This Map and The Survey Has Been Made Under My Immediate Supervision And Complies With The Laws Of The State Of New Jersey.
 SIGNATURE *Craig F. Remington* N.J. License No. 13904 PE & LS

I HEREBY CERTIFY THAT THIS MAP AND ANY REQUIRED SURVEY HAS BEEN MADE UNDER MY IMMEDIATE SUPERVISION AND COMPLIES WITH THE LAWS OF THE STATE OF NEW JERSEY.
Craig F. Remington
 CRAIG F. REMINGTON N.J. LIC. No. 23924

TAX MAP
TOWNSHIP OF WEYMOUTH
 ATLANTIC COUNTY NEW JERSEY
 SCALE: 1" = 1320' APRIL 1996
CRAIG F. REMINGTON
 PROFESSIONAL LAND SURVEYOR & PLANNER
 NEW JERSEY LICENSE NO. 23924
 845 NORTH MAIN STREET
 ELEASANTVILLE, NEW JERSEY 08232
 TO SHOW CONDITIONS AS OF APRIL, 1996