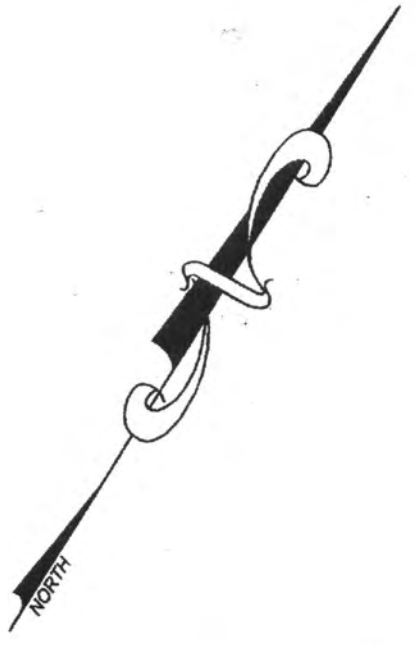


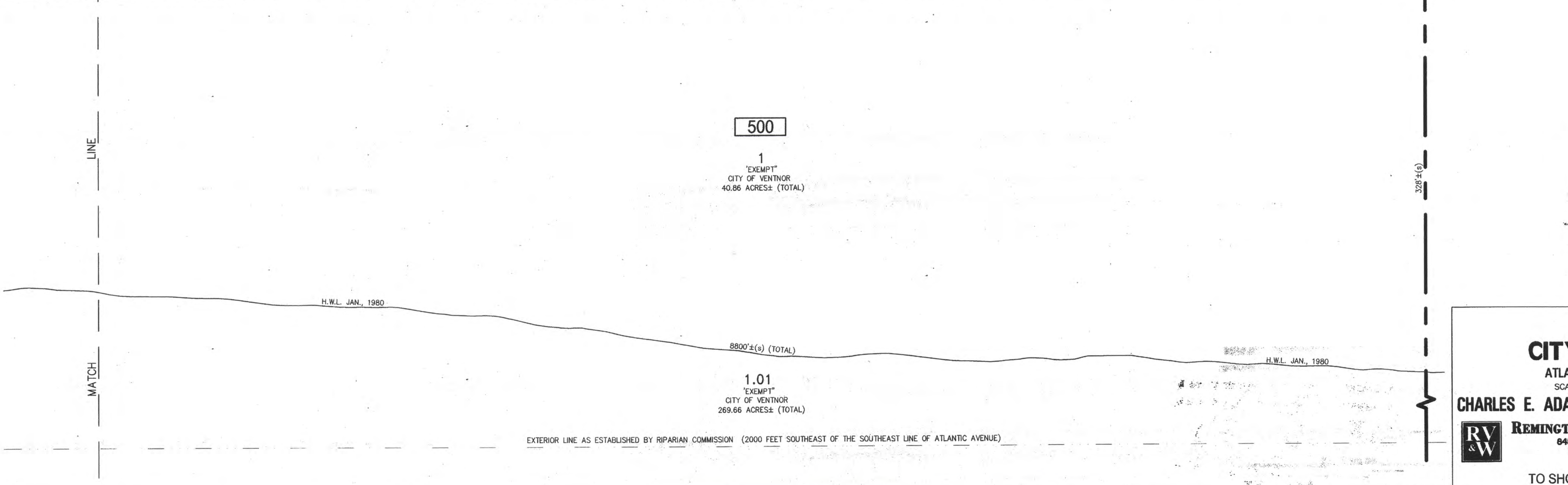
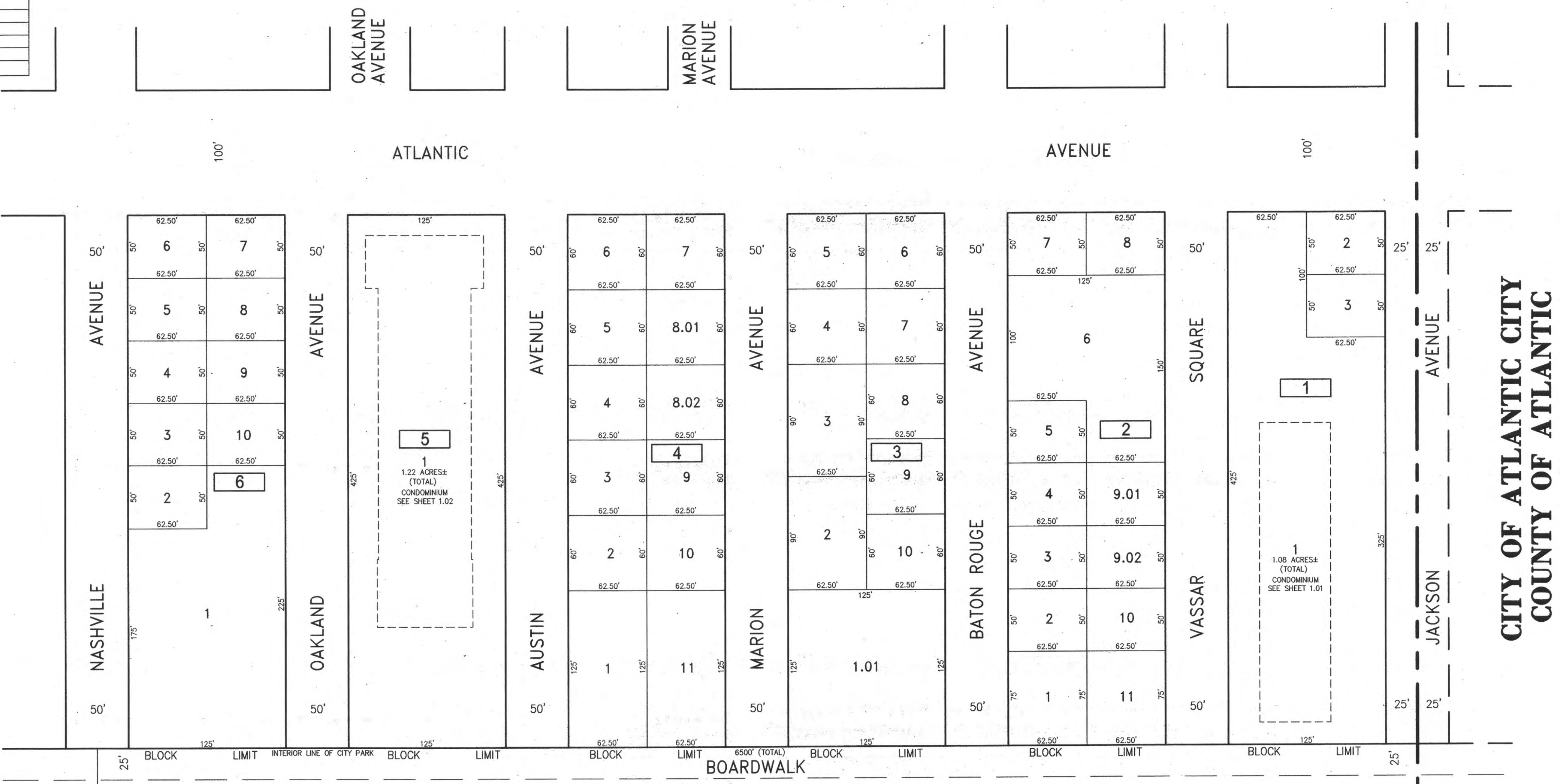
REVISIONS		
DATE	NAME	NO.

NOTE:
 THIS SHEET HAS BEEN DRAWN USING COMPUTER AIDED DRAFTING/DESIGN
 (CAD/D) AND COORDINATE GEOMETRY (COGO).

SHEET 9



SHEET 2



NEW JERSEY DEPARTMENT OF THE TREASURY
 DIVISION OF TAXATION
 APPROVED AS A TAX MAP PURSUANT TO THE AUTHORITY OF
 N.J.S.A. 54:1-48 AND N.J.S.A. 54:5-4
 FOR THE DIRECTOR, DIVISION OF TAXATION
Charles E. Adamson
 Charles E. Adamson, P.L.S.
 Shelly Kelly, C.T.A.
 DATE: JUL 20 2016

TAX MAP
CITY OF VENTNOR
 ATLANTIC COUNTY NEW JERSEY
 SCALE: 1" = 50' DATE: 2-19-2015

CHARLES E. ADAMSON NJ PROFESSIONAL LAND SURVEYOR LIC. NO. 42627

REMINOTON, VERNICK & WALBERG ENGINEERS
 845 N. MAIN STREET, PLEASANTVILLE, N.J. 08232
 (609) 645-7100, FAX (609) 645-7076
 WEB SITE ADDRESS: WWW.RVW.COM

TO SHOW CONDITIONS AS OF 7-20-2016