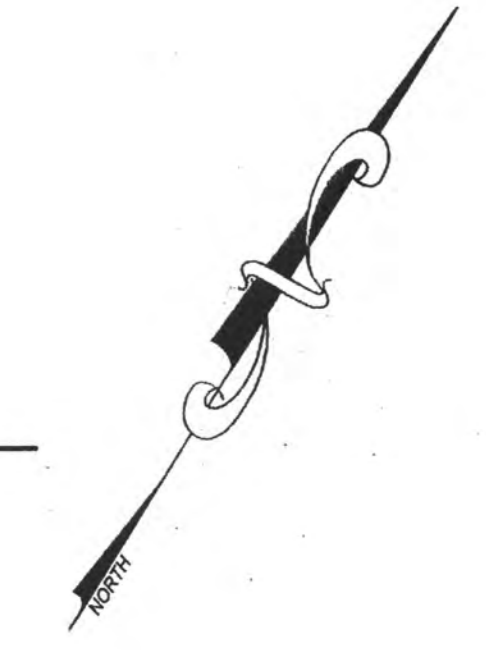


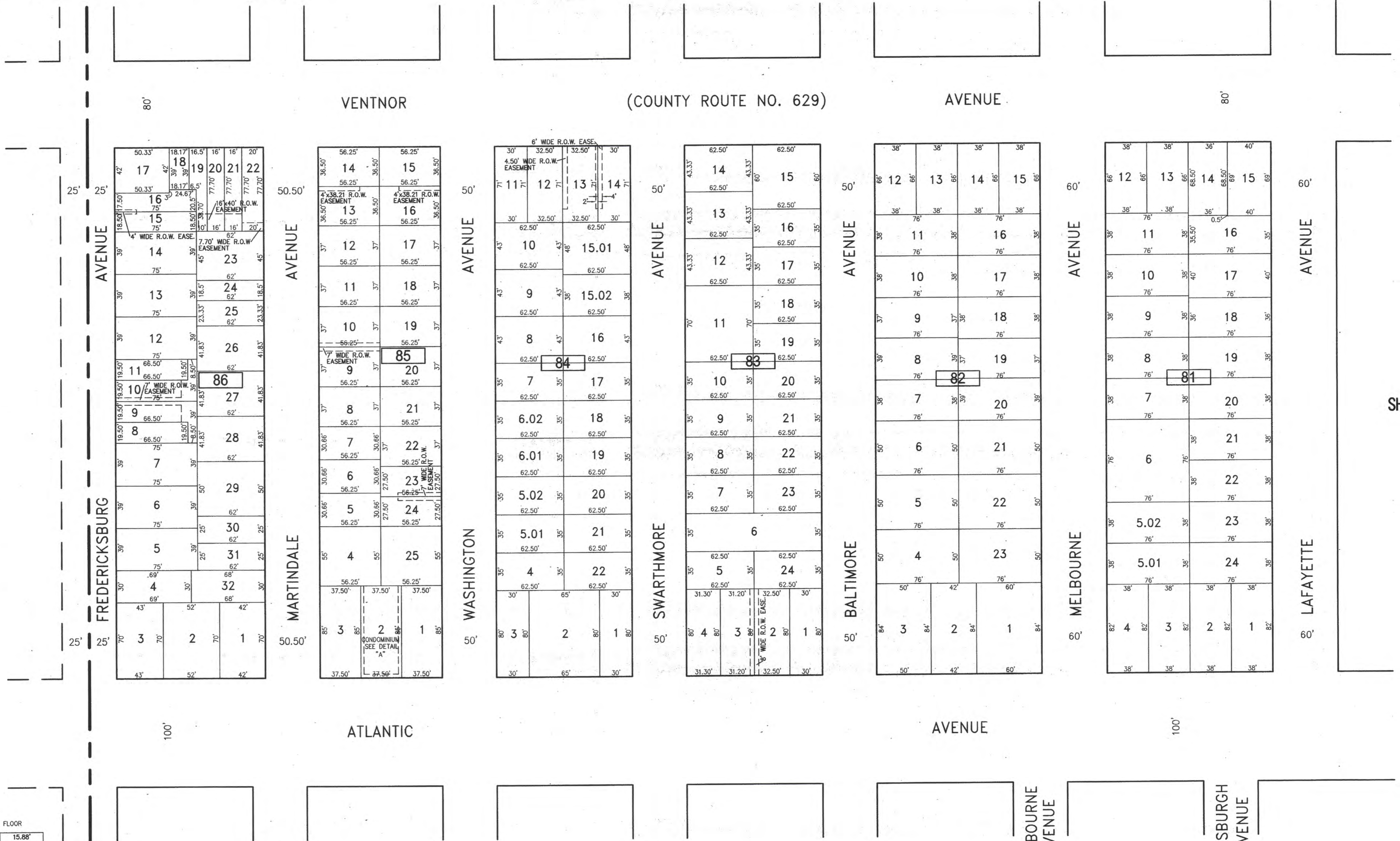
REVISIONS		
DATE	NAME	NO.

NOTE: THIS SHEET HAS BEEN DRAWN USING COMPUTER AIDED DRAFTING/DESIGN (CAD/D) AND COORDINATE GEOMETRY (COGO).

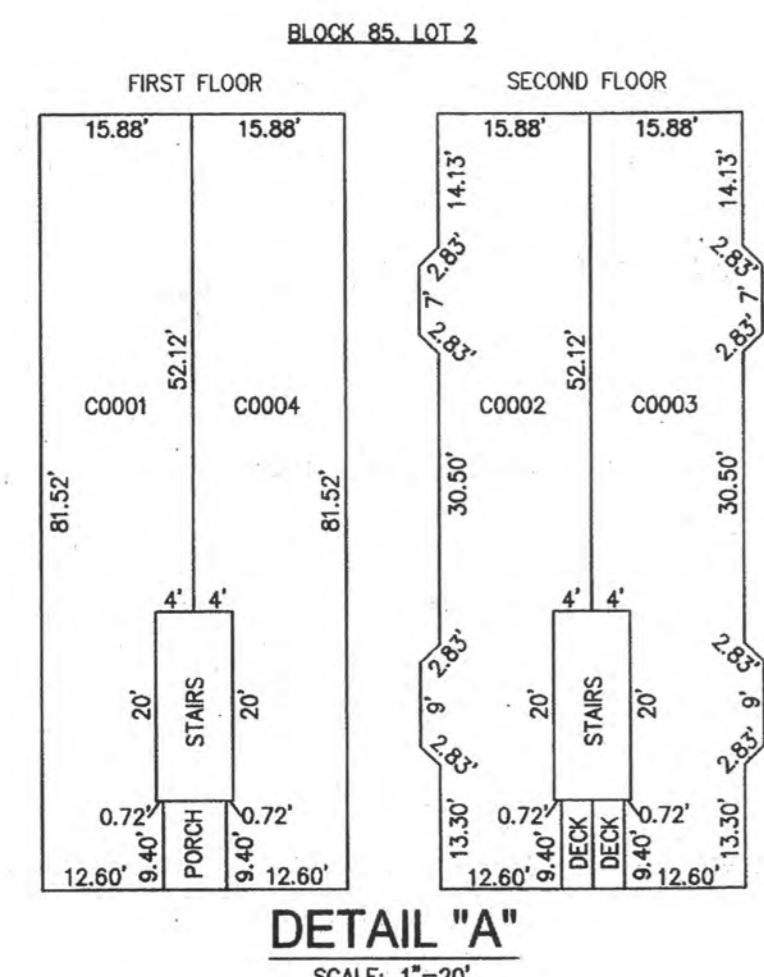
SHEET 24



CITY OF MARGATE
COUNTY OF ATLANTIC



SHEET 15



CONDO QUALIFIER	SQUARE FOOTAGE
C0001	1183 SF
C0002	1303 SF
C0003	1303 SF
C0004	1183 SF

DETAIL "A"
SCALE: 1"=20'

SHEET 8

<p>NEW JERSEY DEPARTMENT OF THE TREASURY DIVISION OF TAXATION APPROVED AS A TAX MAP PURSUANT TO THE AUTHORITY OF N.J.S.A. 54:1-15 AND N.J.S.A. 54:5D-1 FOR THE DIRECTOR, DIVISION OF TAXATION</p> <p><i>Charles Miller</i> John P. Miller, P.E., Chief Property Administration</p> <p><i>Shelly Kelly</i> Shelly Kelly, C.T.A., Principal Survey Representative</p> <p>DATE JUL 20 2016 SERIAL NO. 1070</p>	<p>TAX MAP CITY OF VENTNOR ATLANTIC COUNTY NEW JERSEY SCALE: 1" = 50' DATE: 2-19-2015</p> <p>CHARLES E. ADAMSON NJ PROFESSIONAL LAND SURVEYOR LIC. NO. 42627 24 GA 28048700</p> <p>REMINGTON, VERNICK & WALBERG ENGINEERS 645 N. MAIN STREET, PLEASANTVILLE, N.J. 08232 (609) 645-710, FAX (609) 645-7076 WEB SITE ADDRESS: WWW.RVW.COM</p> <p>TO SHOW CONDITIONS AS OF 7-20-2016</p>