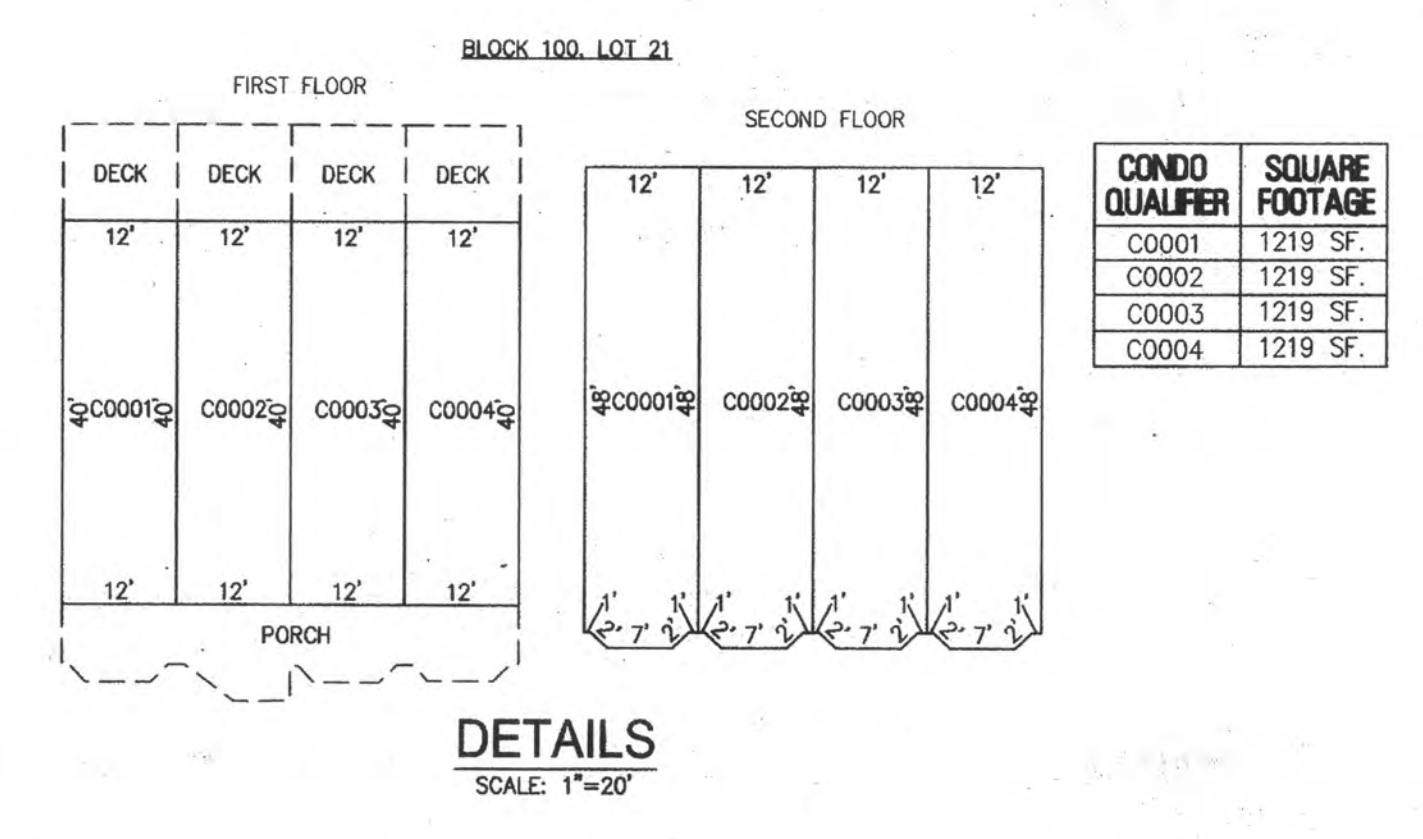
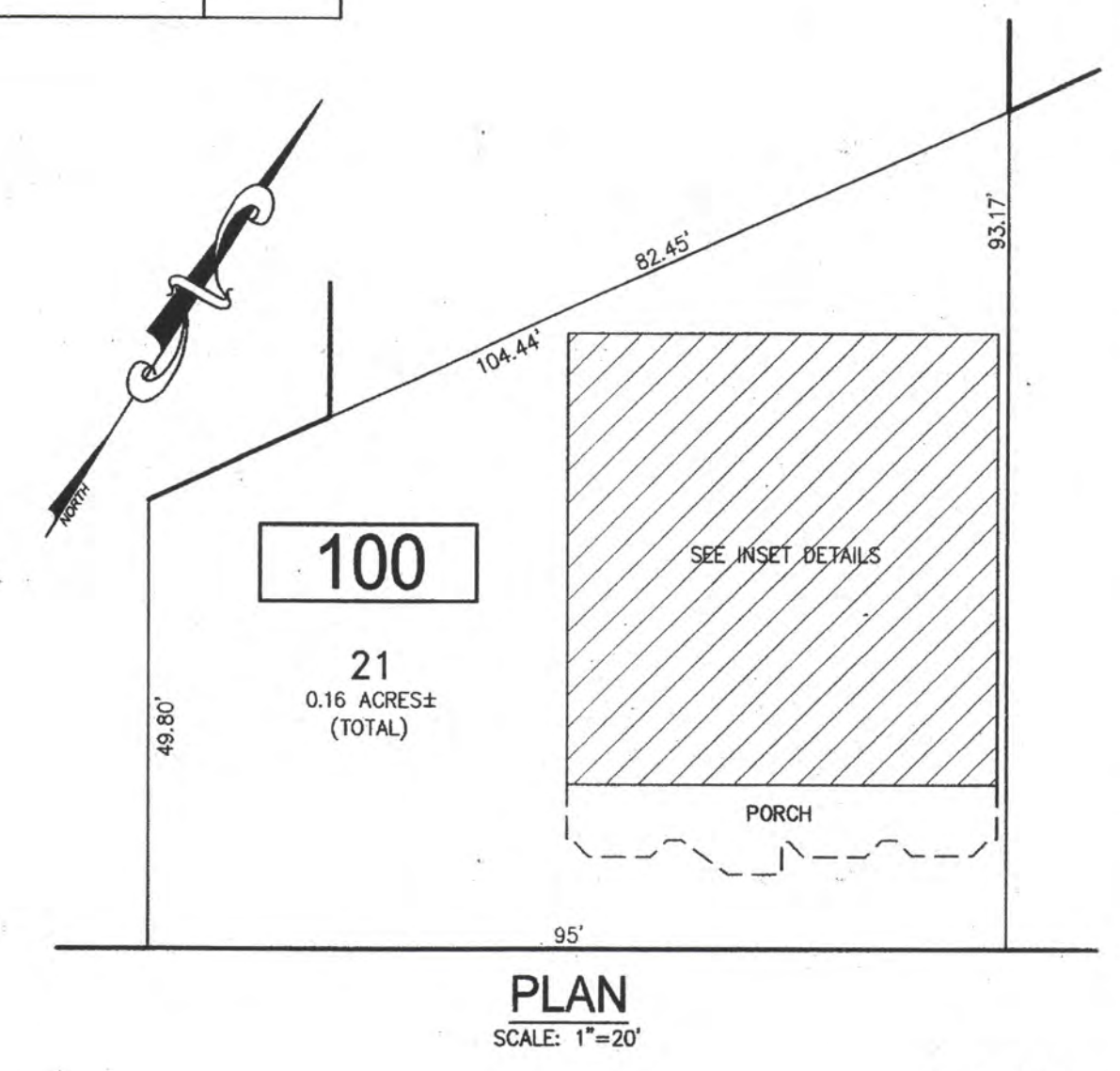
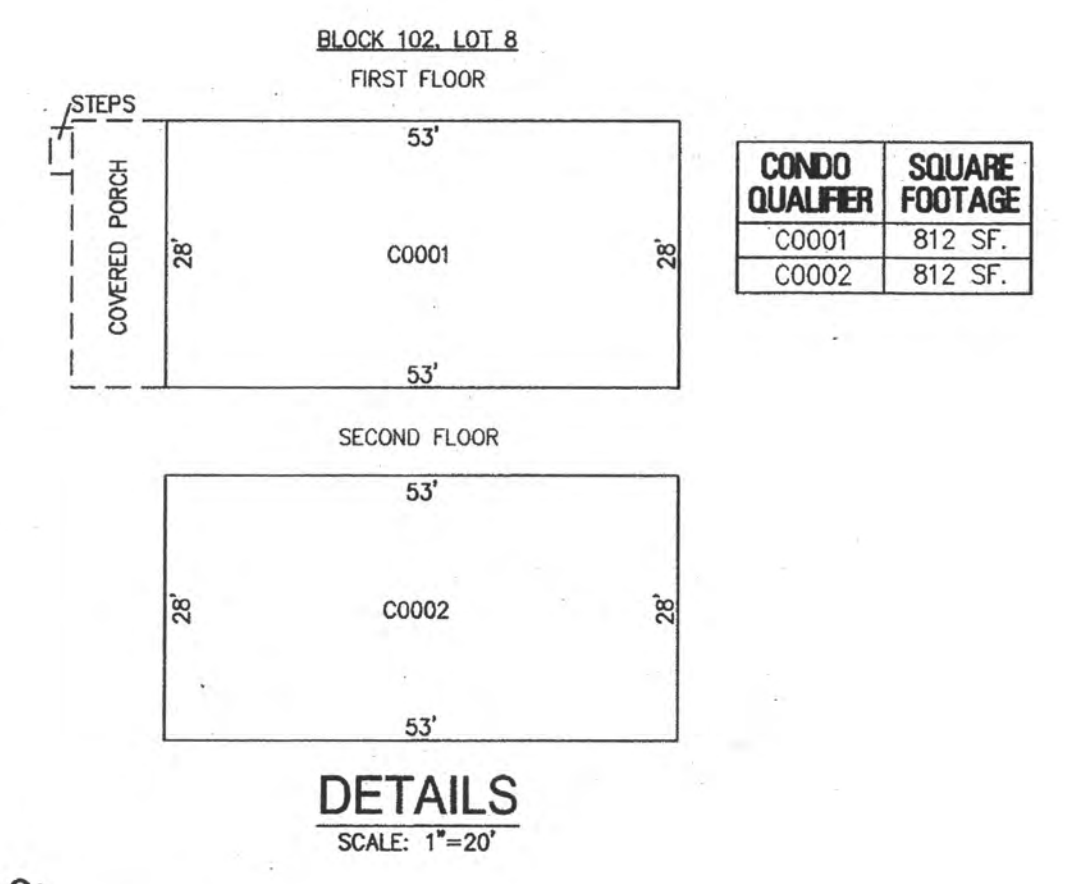
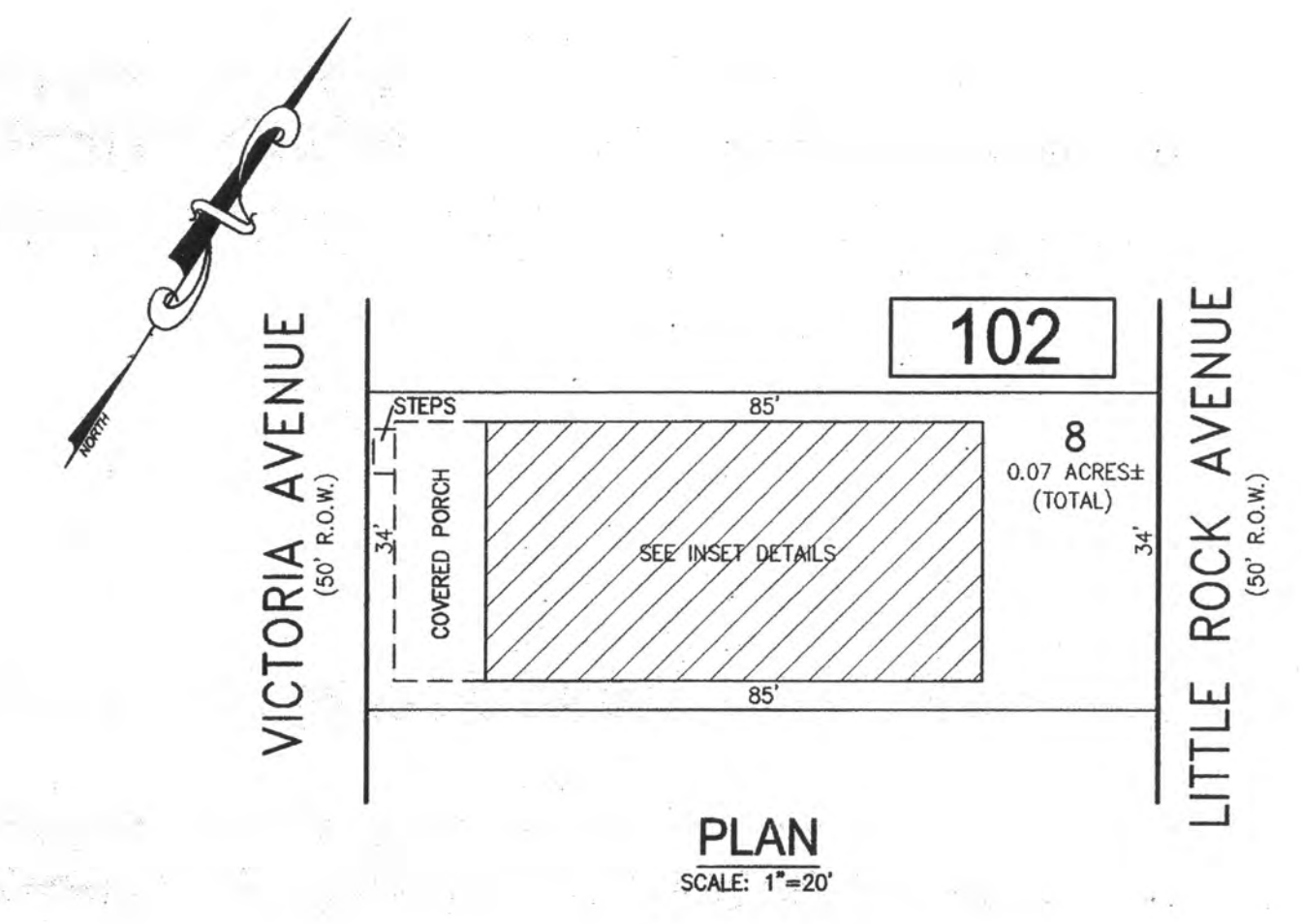


| REVISIONS | | |
|-----------|------|-----|
| DATE | NAME | NO. |
| | | |
| | | |
| | | |
| | | |
| | | |
| | | |
| | | |
| | | |
| | | |
| | | |

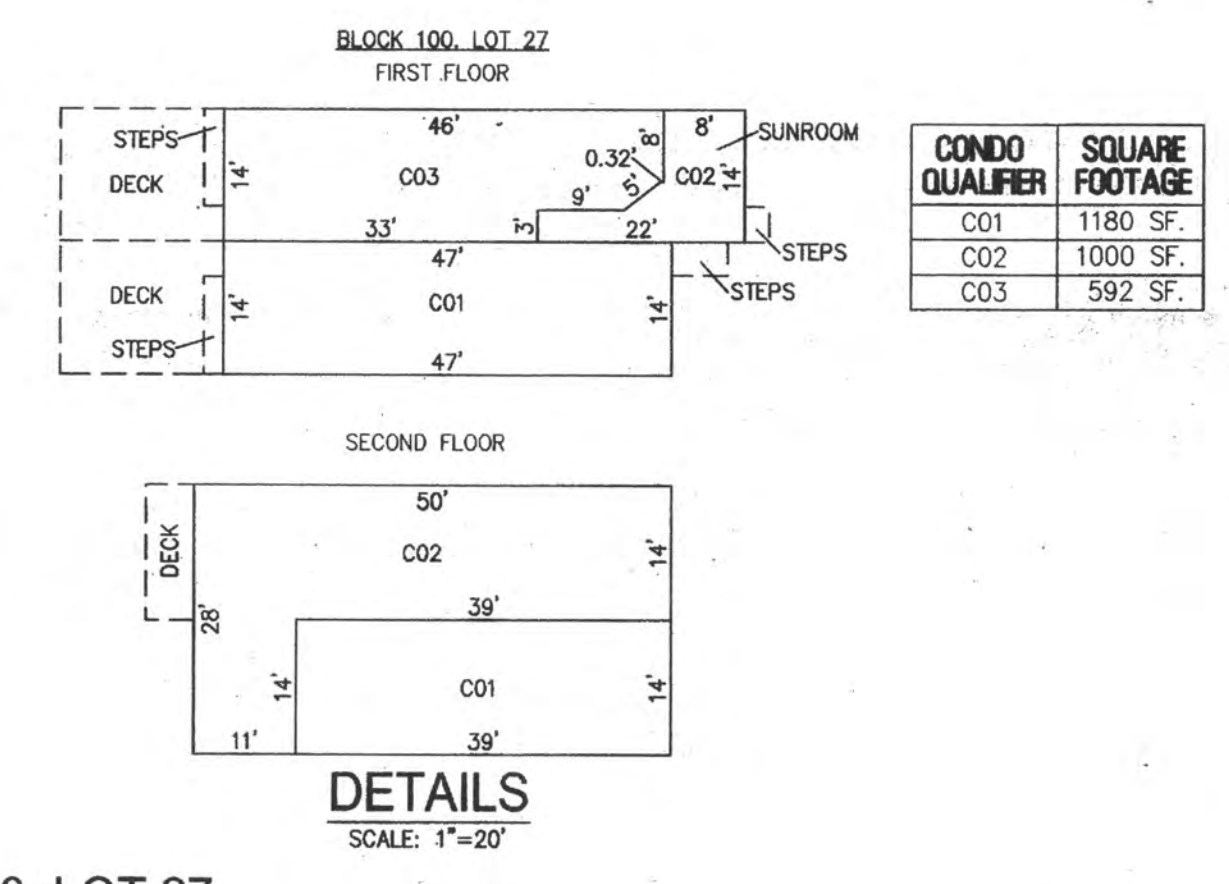
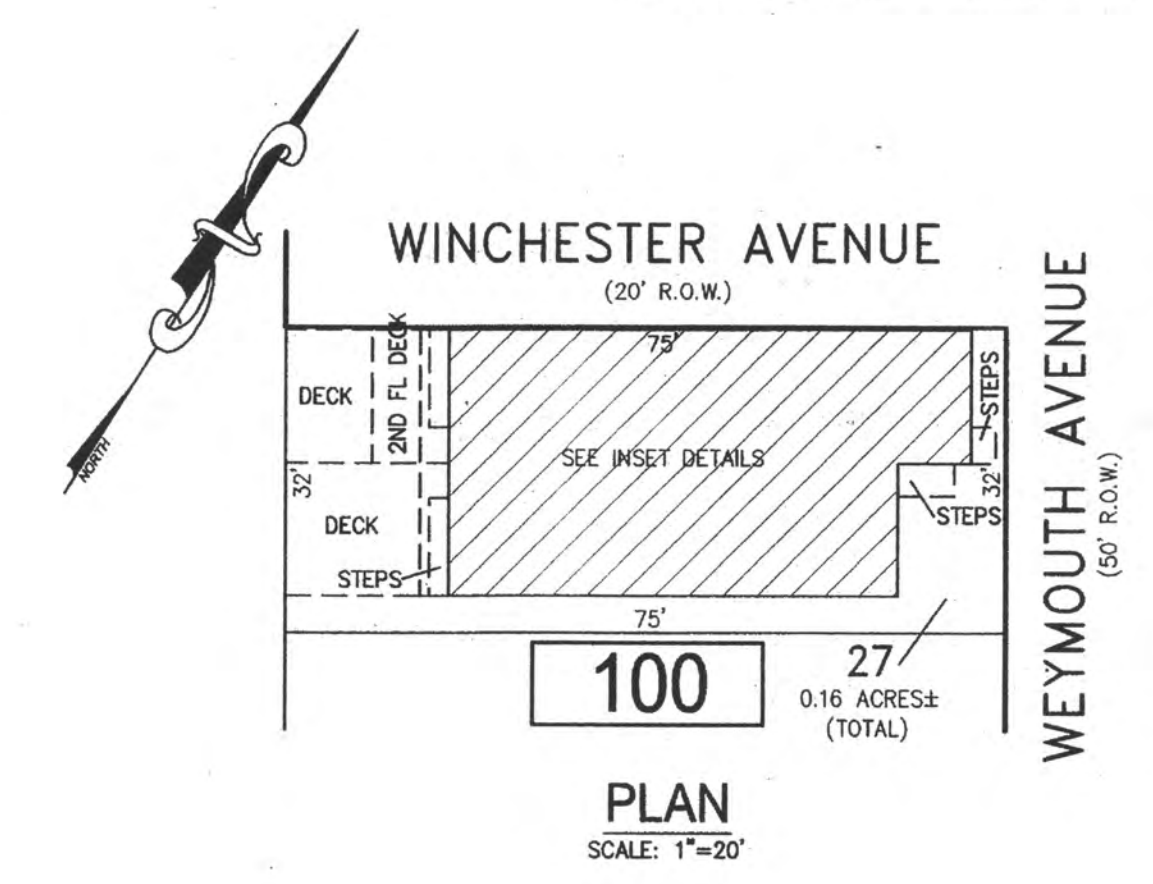
NOTE:
THIS SHEET HAS BEEN DRAWN USING COMPUTER AIDED DRAFTING/DESIGN (CAD/D) AND COORDINATE GEOMETRY (COGO).



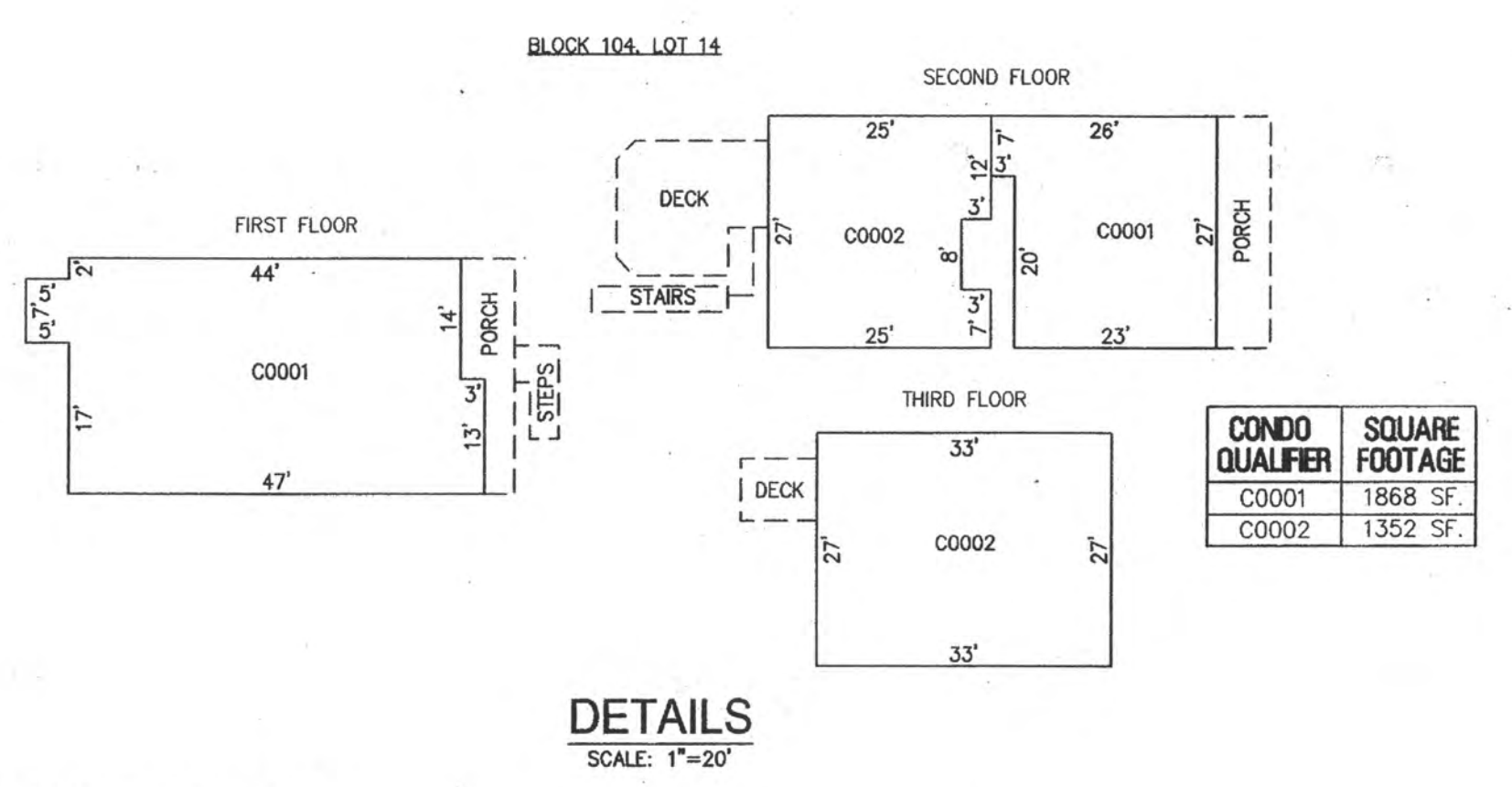
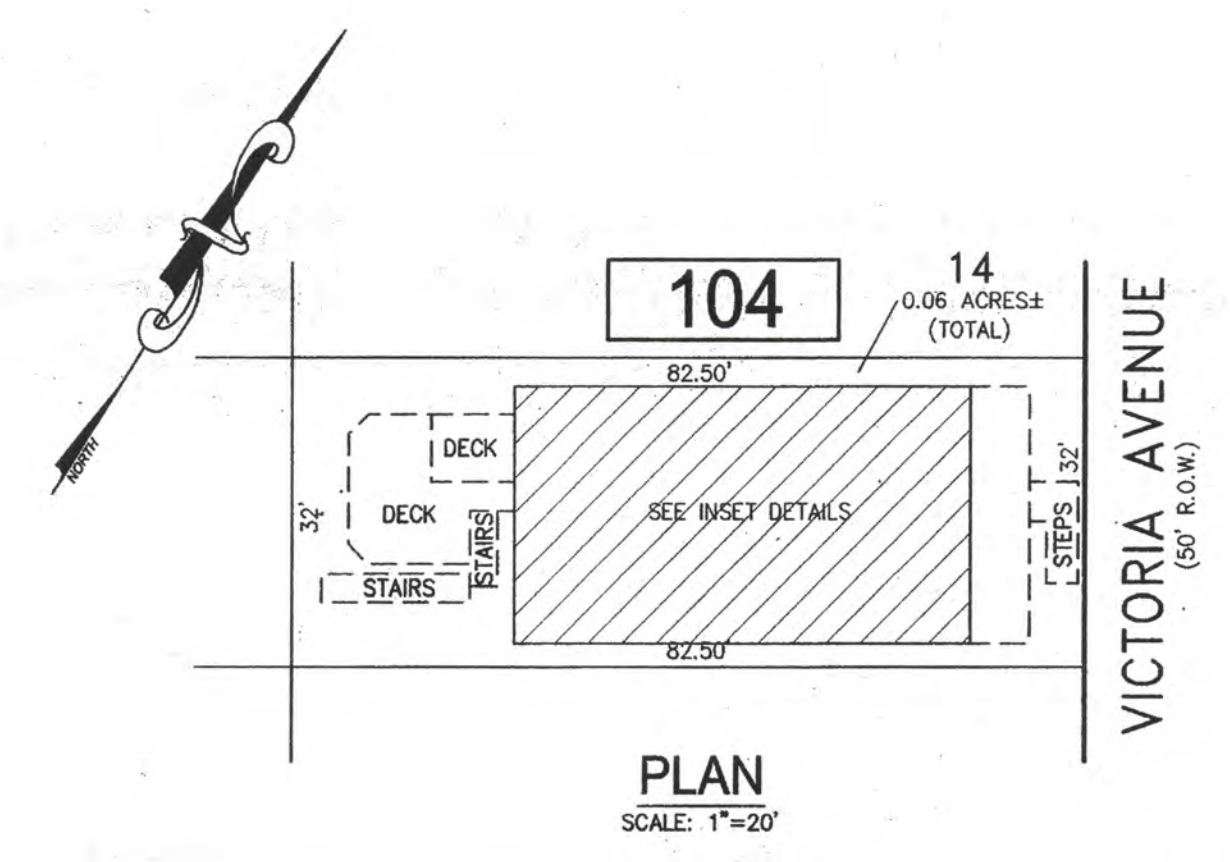
BLOCK 100, LOT 21
5207 WINCHESTER AVENUE CONDOMINIUM



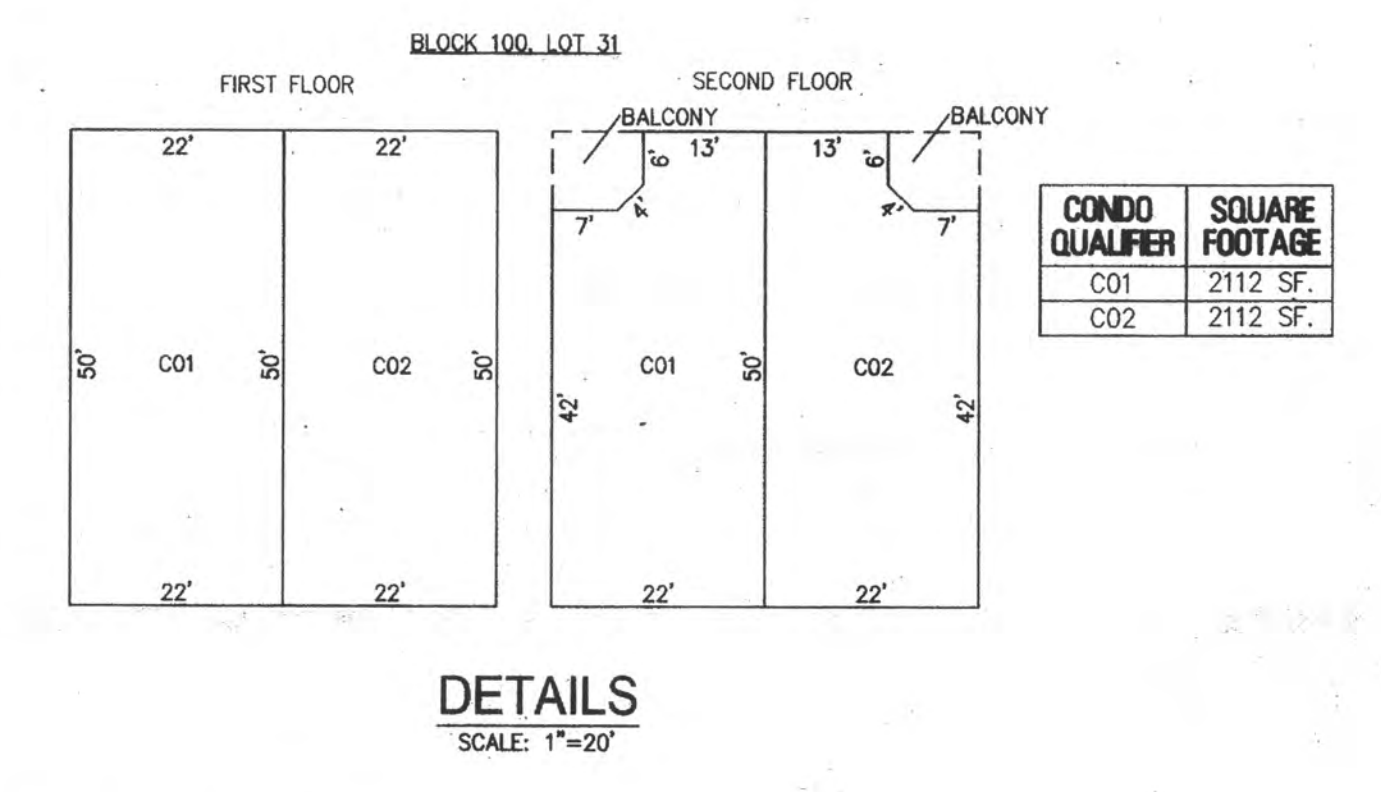
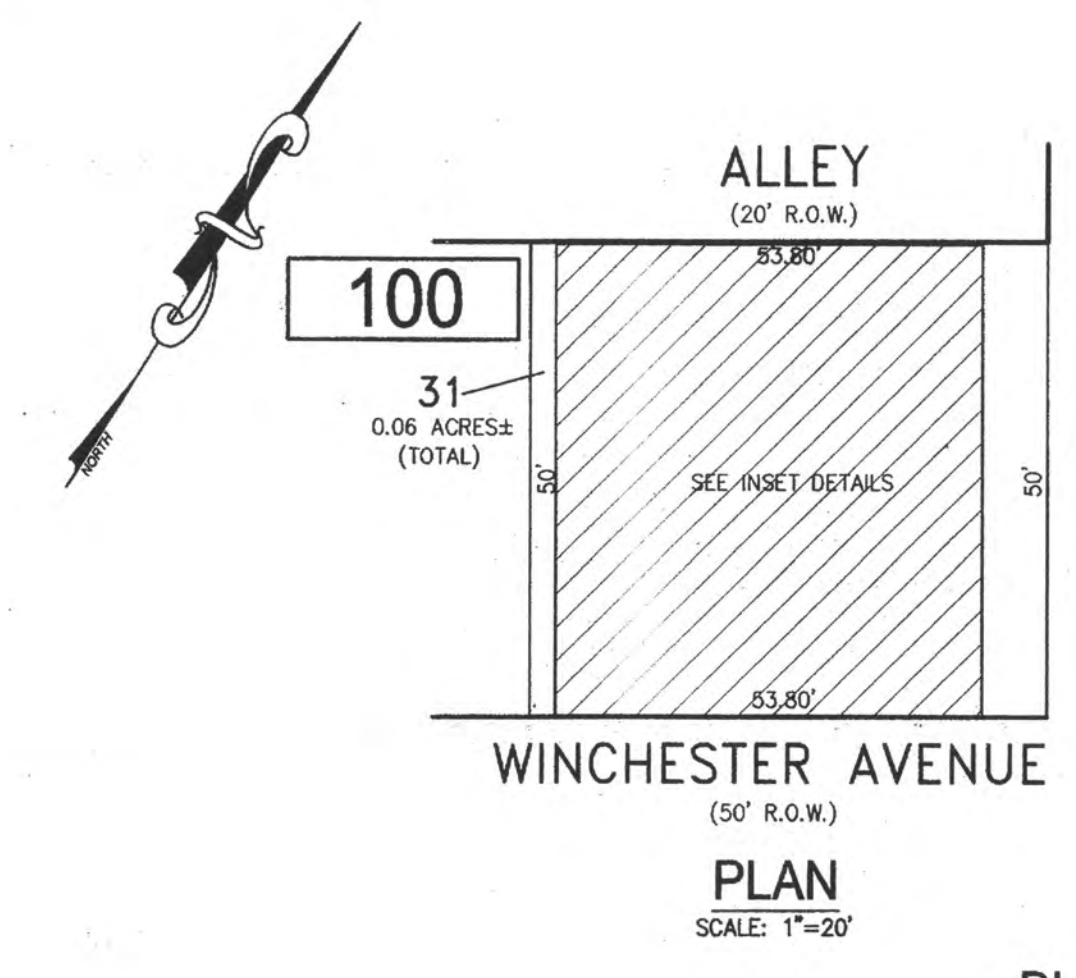
BLOCK 102, LOT 8
VICTORIA AVENUE CONDOMINIUM
13-15 NORTH VICTORIA AVENUE



BLOCK 100, LOT 27
36 N WEYMOUTH AVENUE CONDOMINIUM



BLOCK 104, LOT 14
10 NORTH VICTORIA AVENUE CONDOMINIUM



BLOCK 100, LOT 31
5251 WINCHESTER CONDOMINIUM
5251 WINCHESTER AVENUE

BLOCK 100, LOT 21
BLOCK 100, LOT 27
BLOCK 100, LOT 31
BLOCK 102, LOT 8
BLOCK 104, LOT 14
SEE SHEET 18

NEW JERSEY DEPARTMENT OF THE TREASURY
DIVISION OF TAXATION
APPROVED AS A TAX MAP PURSUANT TO THE AUTHORITY OF
N.J.S.A. 52:27-18 AND N.J.S.A. 52:27-20
FOR THE DIRECTOR, DIVISION OF TAXATION
Charles Miller CTA
Shady Kelly CTA
Shady Kelly, CTA, Principal and Representative
DATE: JUL 20 2016 1070

TAX MAP
CITY OF VENTNOR
ATLANTIC COUNTY NEW JERSEY
SCALE: NOTED DATE: 2-19-2015
CHARLES E. ADAMSON NJ PROFESSIONAL LAND SURVEYOR LIC. NO. 42827
REMINGTON, VERNICK & WALBERG ENGINEERS
24 GA 28048700
845 N. MAIN STREET, PLEASANTVILLE, N.J. 08232
(609) 645-7000, FAX (609) 645-7076
WEB SITE ADDRESS: WWW.RVE.COM
TO SHOW CONDITIONS AS OF 7-20-2016