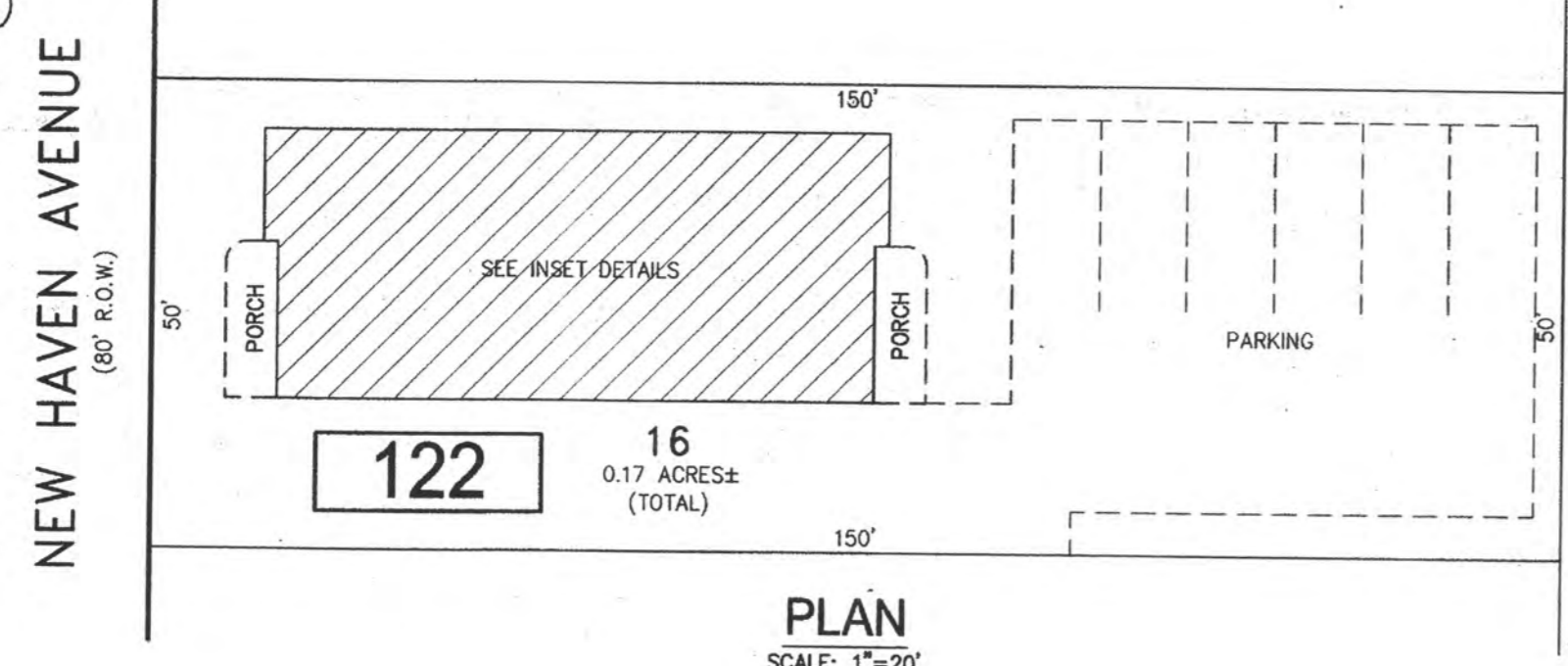


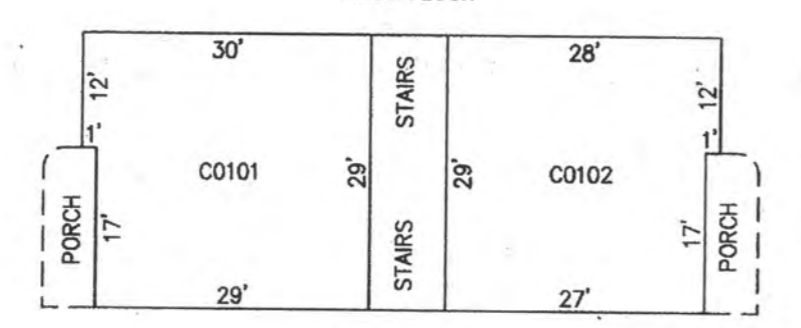
REVISIONS		
DATE	NAME	NO.

**NOTE:**  
THIS SHEET HAS BEEN DRAWN USING COMPUTER AIDED DRAFTING/DESIGN (CAD/D) AND COORDINATE GEOMETRY (COGO).



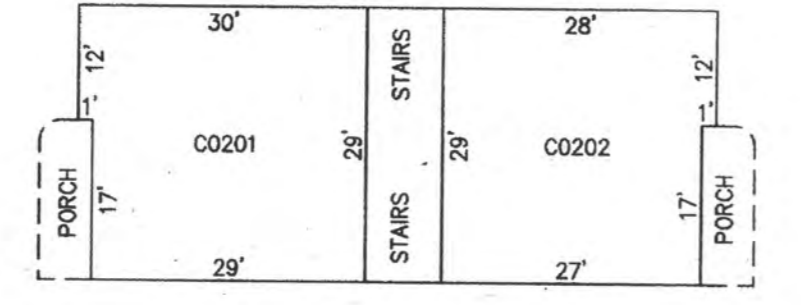
**PLAN**  
SCALE: 1"=20'

BLOCK 122, LOT 16  
FIRST FLOOR

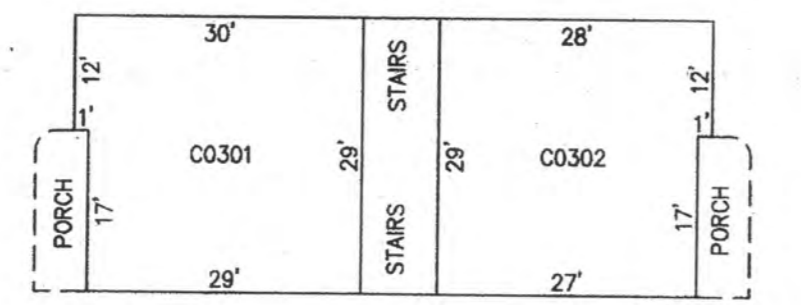


CONDO QUALIFIER	SQUARE FOOTAGE
C0101	906 SF
C0102	906 SF
C0201	906 SF
C0202	906 SF
C0301	906 SF
C0302	906 SF

SECOND FLOOR

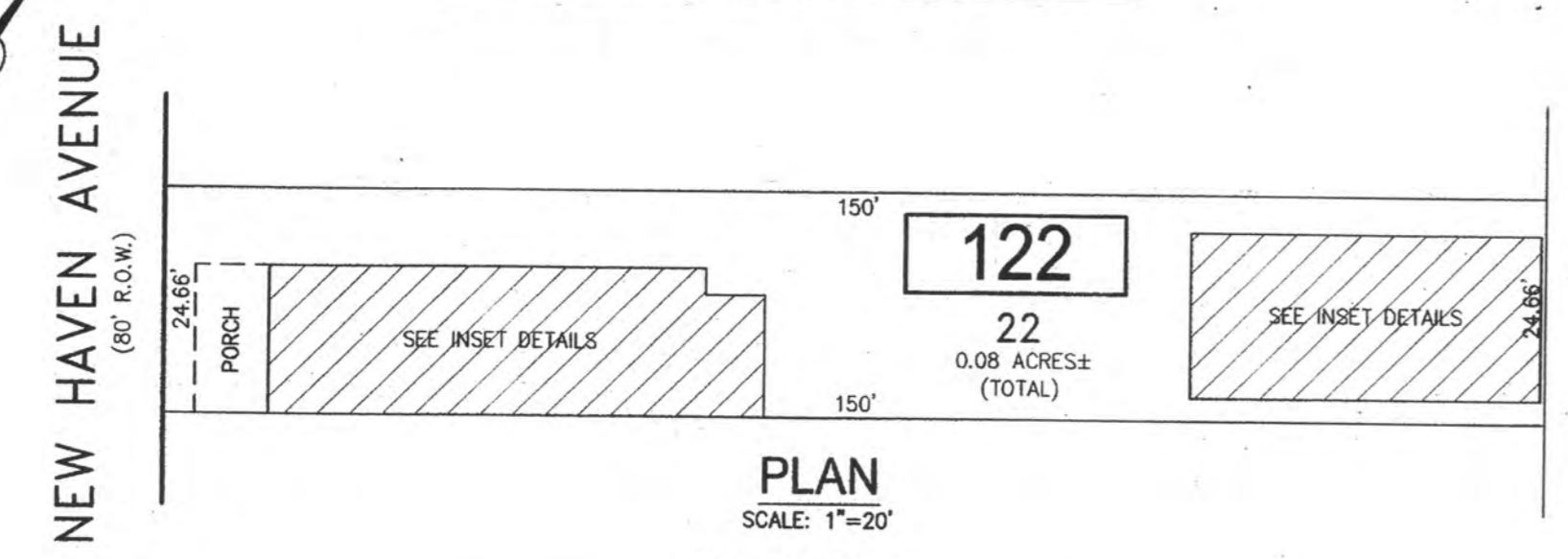


THIRD FLOOR



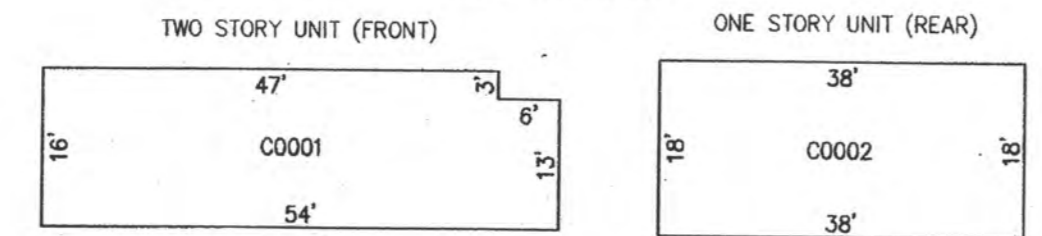
**DETAILS**  
SCALE: 1"=20'

BLOCK 122, LOT 16  
NEW HAVEN GARDENS CONDOMINIUM  
5 NORTH NEW HAVEN AVENUE



**PLAN**  
SCALE: 1"=20'

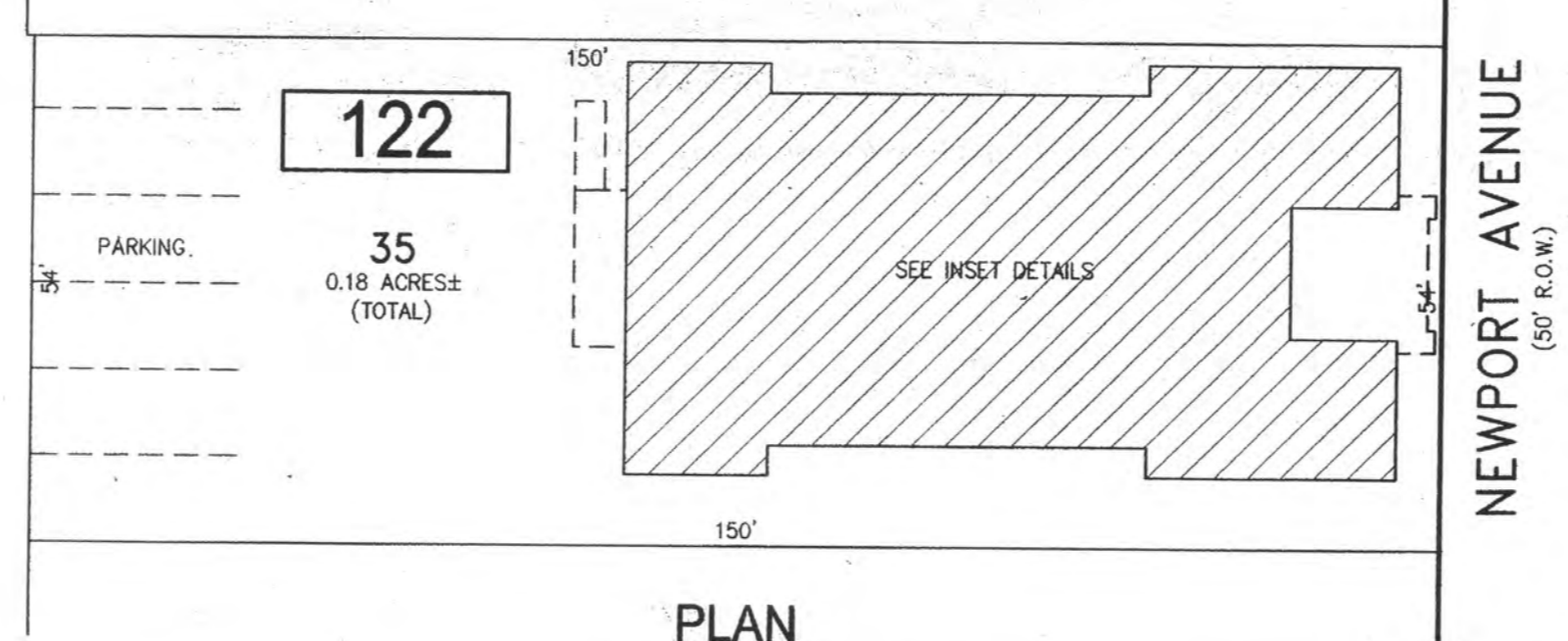
BLOCK 122, LOT 22



CONDO QUALIFIER	SQUARE FOOTAGE
C0001	1436 SF
C0002	665 SF

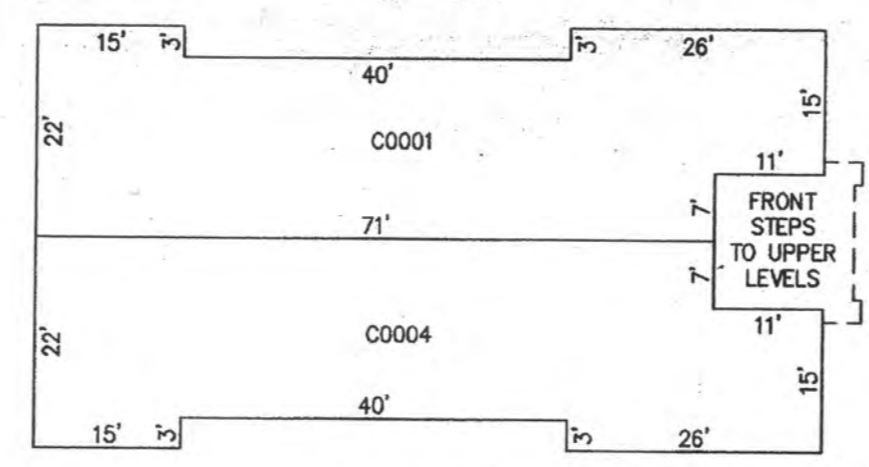
**DETAILS**  
SCALE: 1"=20'

BLOCK 122, LOT 22  
17 NORTH NEW HAVEN AVENUE CONDOMINIUM



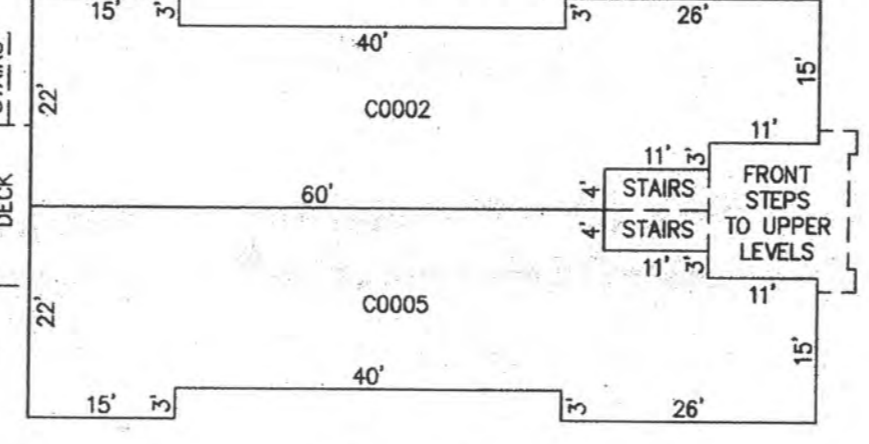
**PLAN**  
SCALE: 1"=20'

BLOCK 122, LOT 35  
FIRST FLOOR

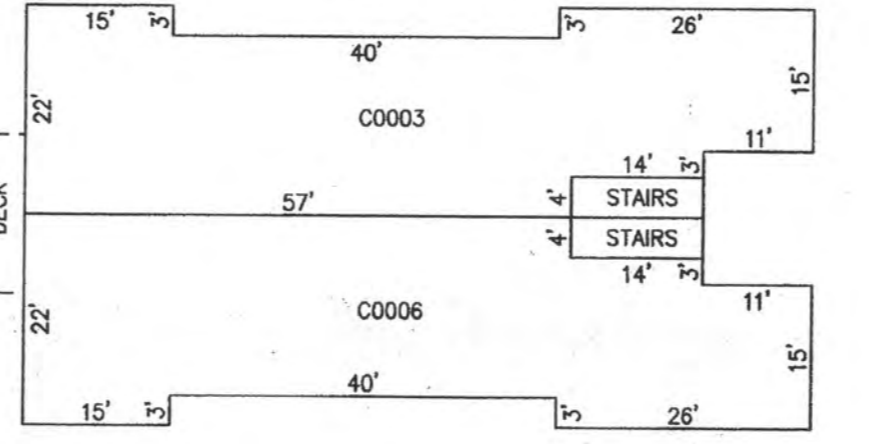


CONDO QUALIFIER	SQUARE FOOTAGE
C0001	1597 SF
C0002	1553 SF
C0003	1553 SF
C0004	1597 SF
C0005	1553 SF
C0006	1553 SF

SECOND FLOOR

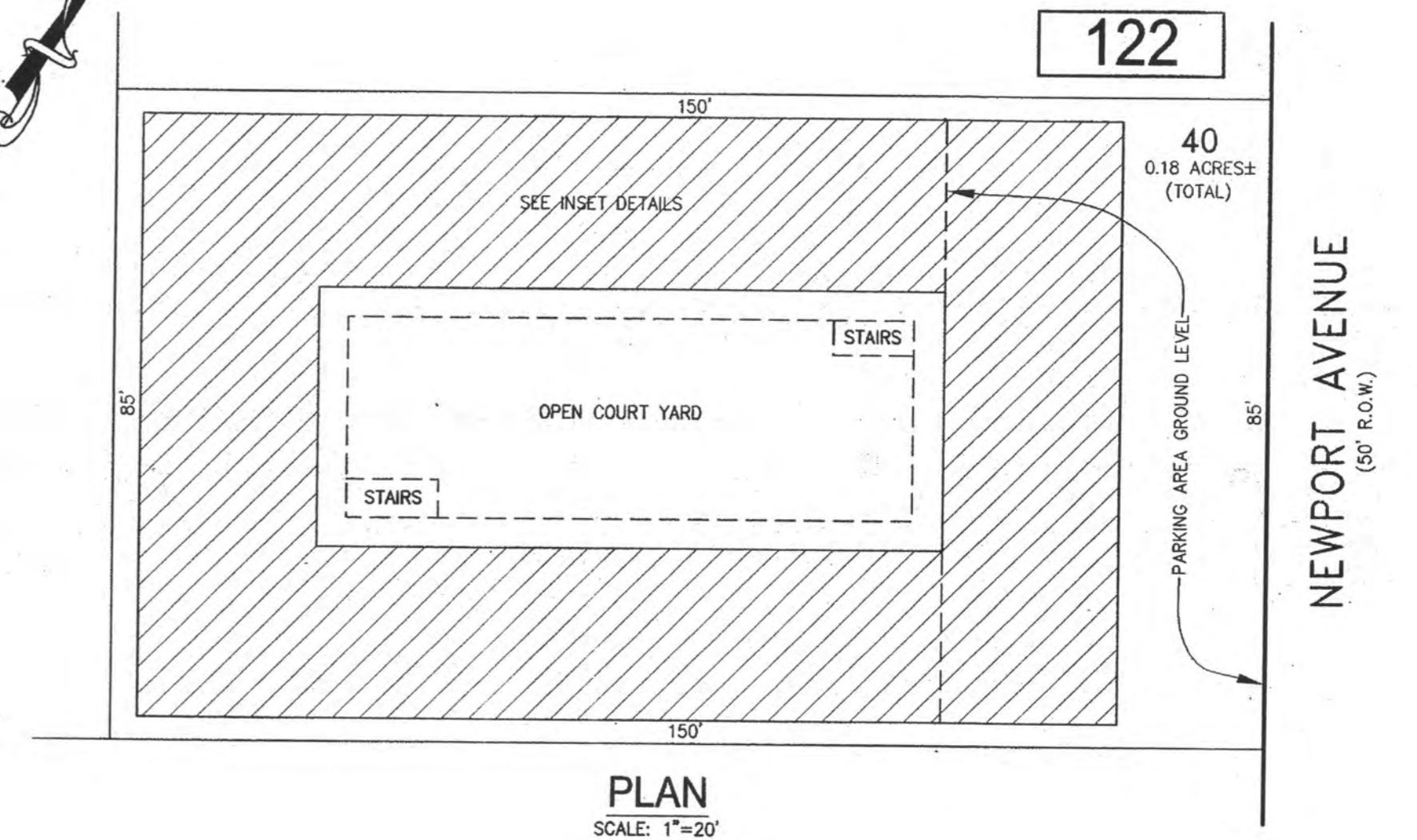


THIRD FLOOR



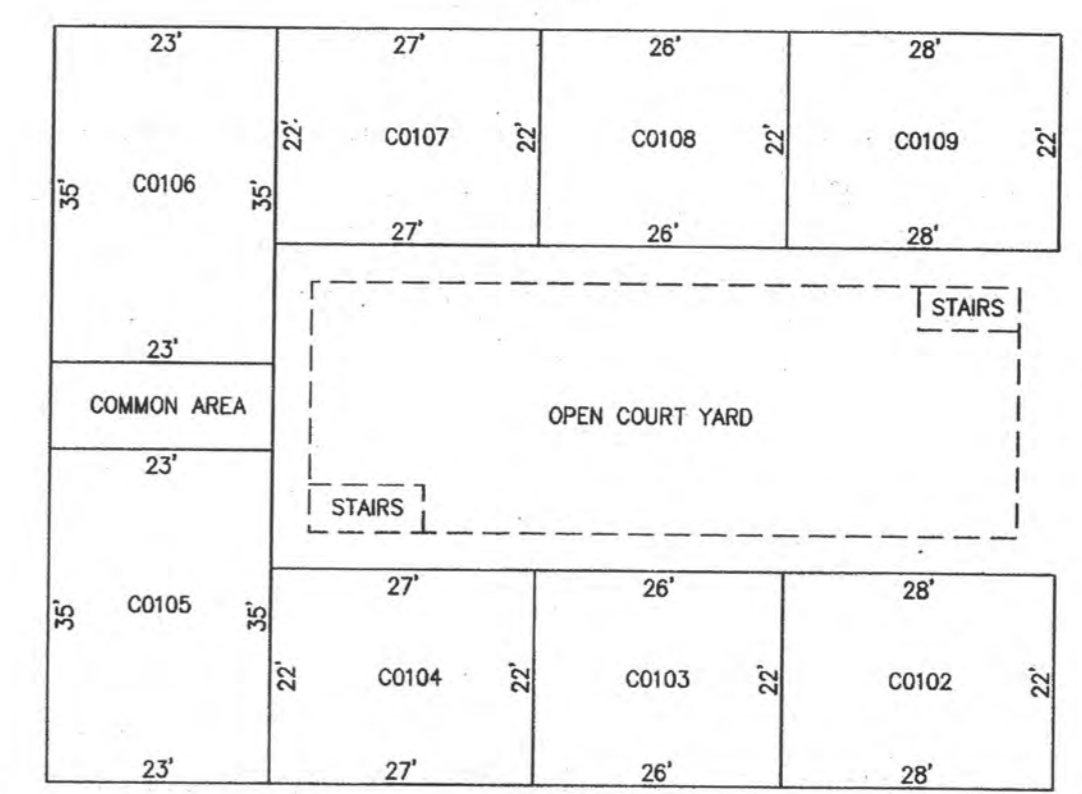
**DETAILS**  
SCALE: 1"=20'

BLOCK 122, LOT 35  
NEWPORT NORTH CONDOMINIUM  
18-20 NORTH NEWPORT AVENUE



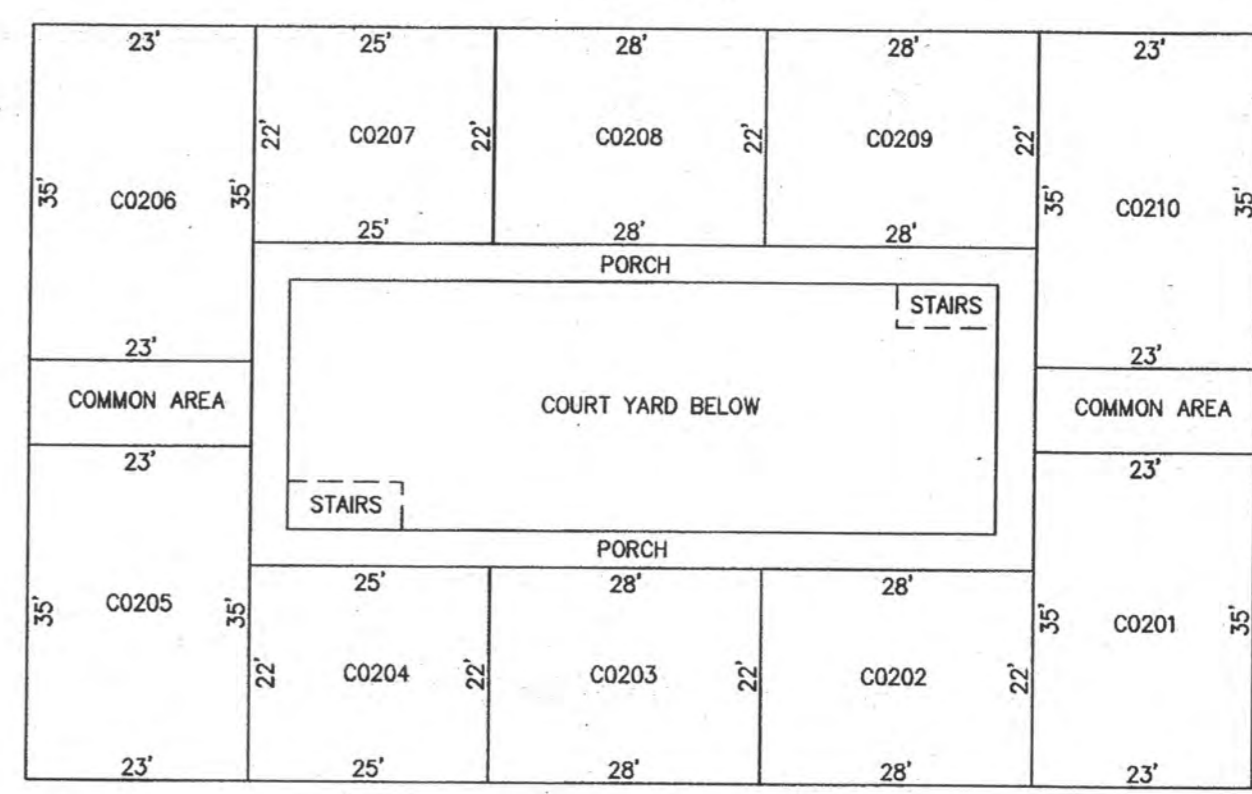
**PLAN**  
SCALE: 1"=20'

BLOCK 122, LOT 40  
FIRST FLOOR



CONDO QUALIFIER	SQUARE FOOTAGE
C0102	570 SF
C0103	570 SF
C0104	570 SF
C0105	794 SF
C0106	794 SF
C0107	570 SF
C0108	570 SF
C0109	570 SF
C0201	794 SF
C0202	570 SF
C0203	570 SF
C0204	570 SF
C0205	794 SF
C0206	794 SF
C0207	570 SF
C0208	570 SF
C0209	570 SF
C0210	794 SF

SECOND FLOOR



**DETAILS**  
SCALE: 1"=20'

BLOCK 122, LOT 40  
NEWPORT GARDENS CONDOMINIUM  
6 NORTH NEWPORT AVENUE

BLOCK 122, LOT 16  
BLOCK 122, LOT 22  
BLOCK 122, LOT 35  
BLOCK 122, LOT 40  
SEE SHEET 22

NEW JERSEY DEPARTMENT OF THE TREASURY  
DIVISION OF TAXATION  
APPROVED AS A TAX MAP PURSUANT TO THE AUTHORITY OF  
N.J.S.A. 54:1-15 AND N.J.S.A. 54:50-1  
FOR THE DIRECTOR, DIVISION OF TAXATION

*Chad Miller CTA*  
John P. Miller, P.E., Chief Property Administration

*Shelby Kelly CTA*  
Shelby Kelly, CTA, Principal and Representative

DATE: JUL 20 2016 SERIAL NO. 1070

**TAX MAP**  
**CITY OF VENTNOR**  
ATLANTIC COUNTY NEW JERSEY  
SCALE: NOTED DATE: 2-19-2015

CHARLES E. ADAMSON NJ PROFESSIONAL LAND SURVEYOR LIC. NO. 42627

**RV & W**  
REMINGTON, VERNICK & WALBERG ENGINEERS  
845 N. MAN STREET, PLEASANTVILLE, NJ 08232  
(609) 645-700, FAX (609) 645-7076  
WEB SITE ADDRESS: WWW.RVW.COM

TO SHOW CONDITIONS AS OF 7-20-2016