

REVISIONS		
DATE	NAME	NO.

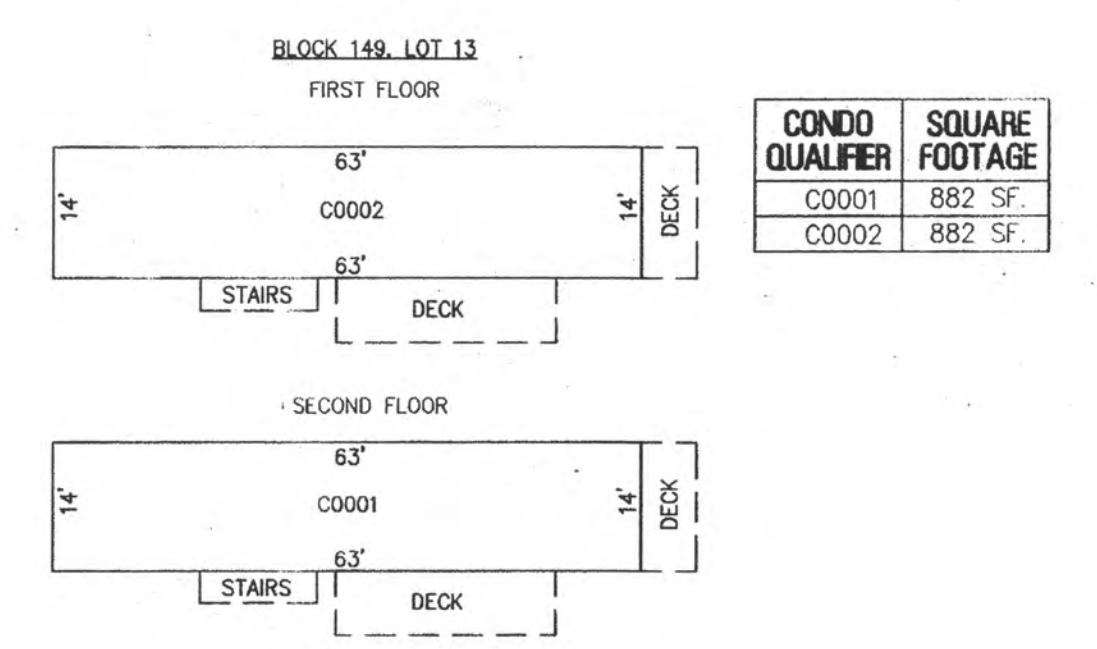
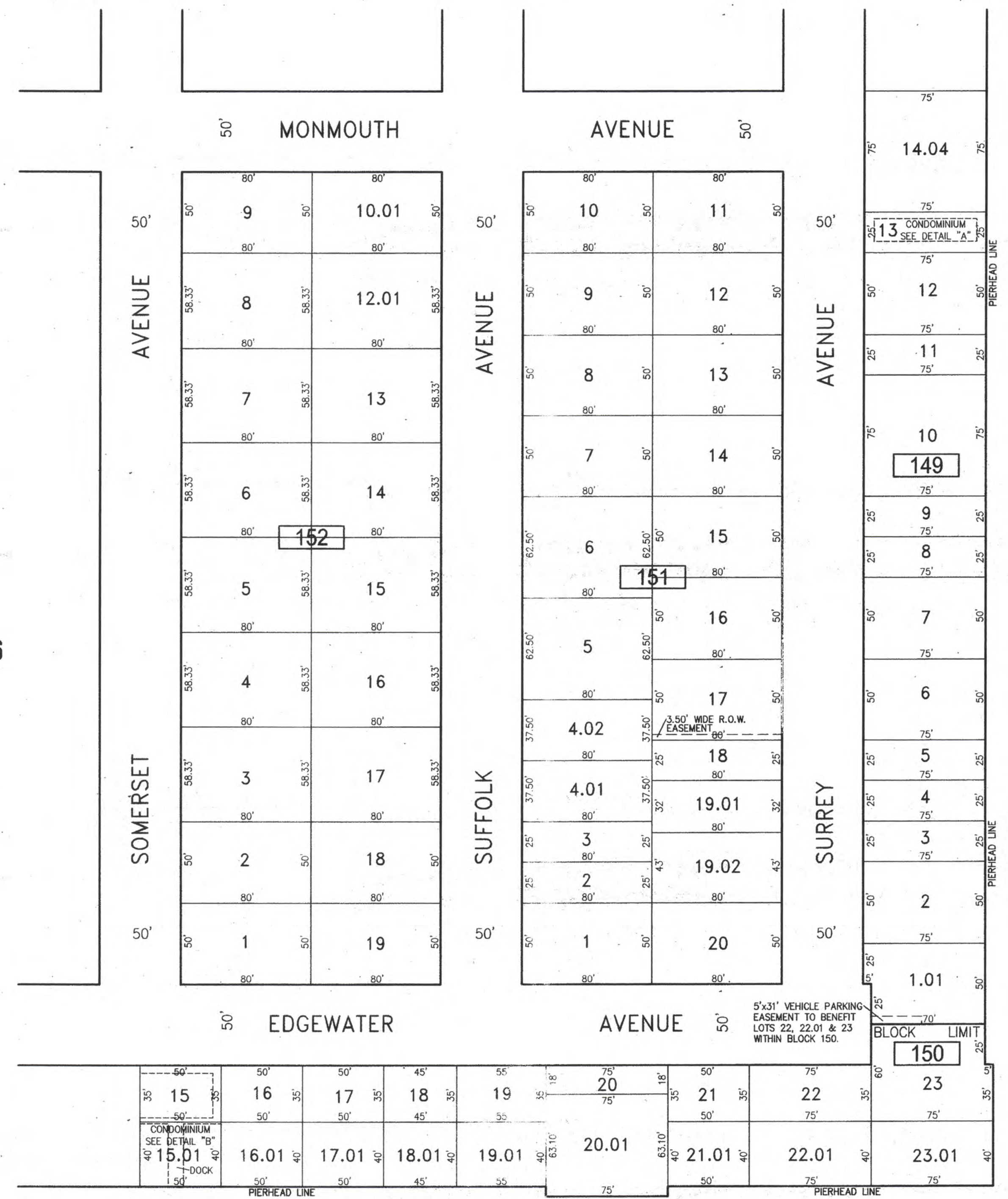
NOTE:
THIS SHEET HAS BEEN DRAWN USING COMPUTER AIDED DRAFTING/DESIGN (CAD/D) AND COORDINATE GEOMETRY (COGO).

SHEET 32

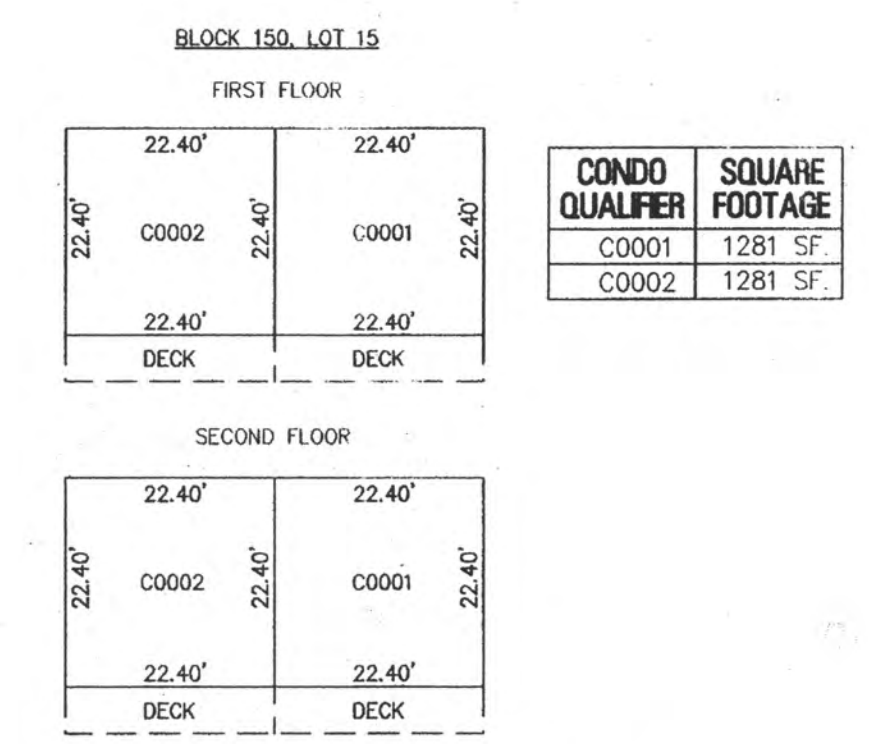
SHEET 26

SHEET 40

SHEET 19



BAY ACRES CONDOMINIUM
139 NORTH SURREY AVENUE
DETAIL "A"
SCALE: 1"=20'



CACTUS FLATES CONDOMINIUM
5510 EDGEWATER AVENUE
DETAIL "B"
SCALE: 1"=20'

NEW JERSEY DEPARTMENT OF THE TREASURY
DIVISION OF TAXATION
APPROVED AS A TAX MAP PURSUANT TO THE AUTHORITY OF
N.J.S.A. 54:15 AND N.J.S.A. 54:50-4
FOR THE DIRECTOR, DIVISION OF TAXATION
Chad Miller CTA
John P. Miller, CTA, Chief Property Administration
Shelly Kelly CTA
Shelly Kelly, CTA, Principal Representative
DATE **JUL 20 2016** SERIAL NO. **1070**

TAX MAP
CITY OF VENTNOR
ATLANTIC COUNTY NEW JERSEY
SCALE: 1" = 50' DATE: 2-19-2015
CHARLES E. ADAMSON NJ PROFESSIONAL LAND SURVEYOR LIC. NO. 42827
REMINGTON, VERNICK & WALBERG ENGINEERS
24 GA. 28048700
645 N. MAIN STREET, PLEASANTVILLE, NJ 08232
(609) 645-7000, FAX (609) 645-7076
WEB SITE ADDRESS: WWW.RVE.COM
TO SHOW CONDITIONS AS OF 7-20-2016