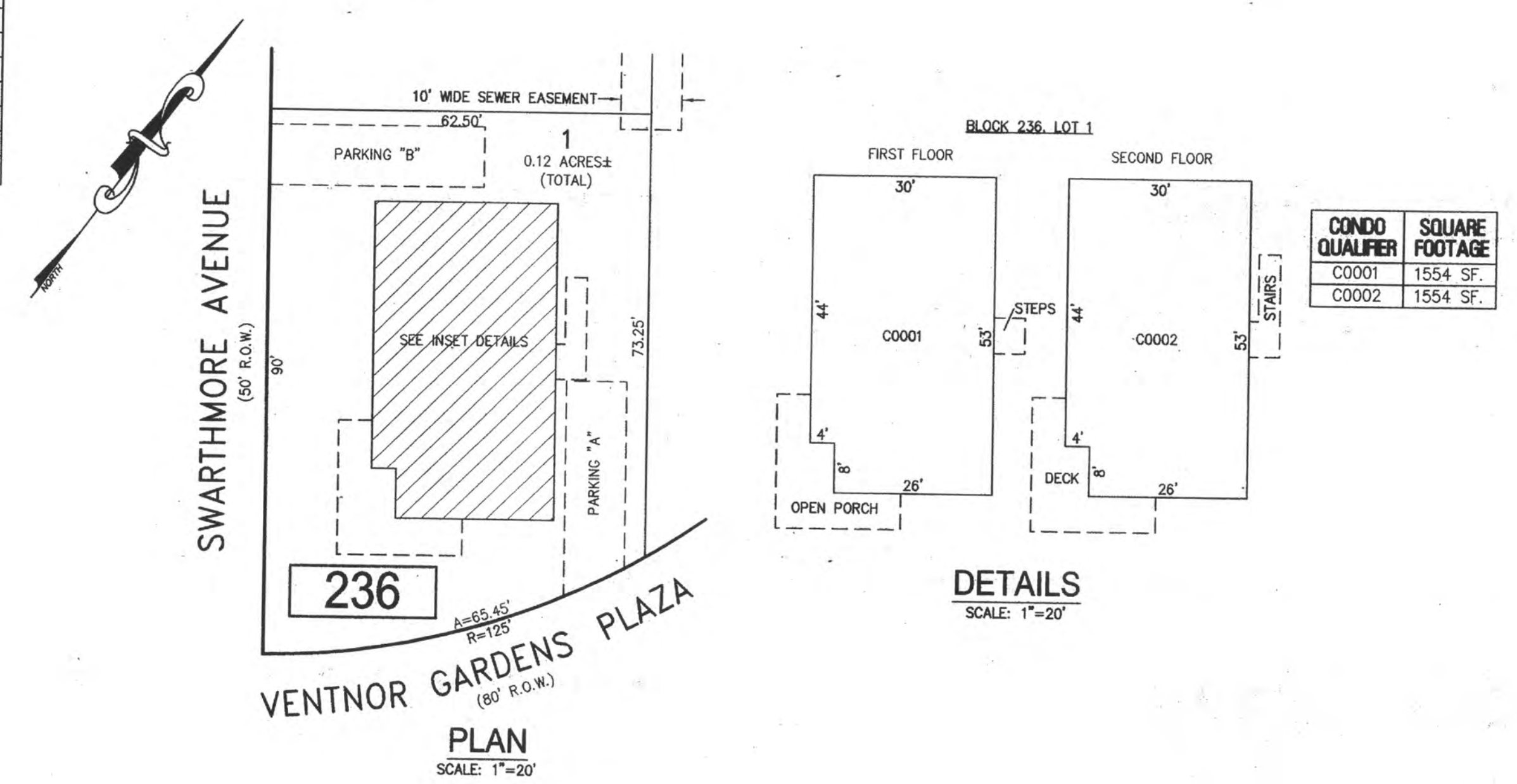


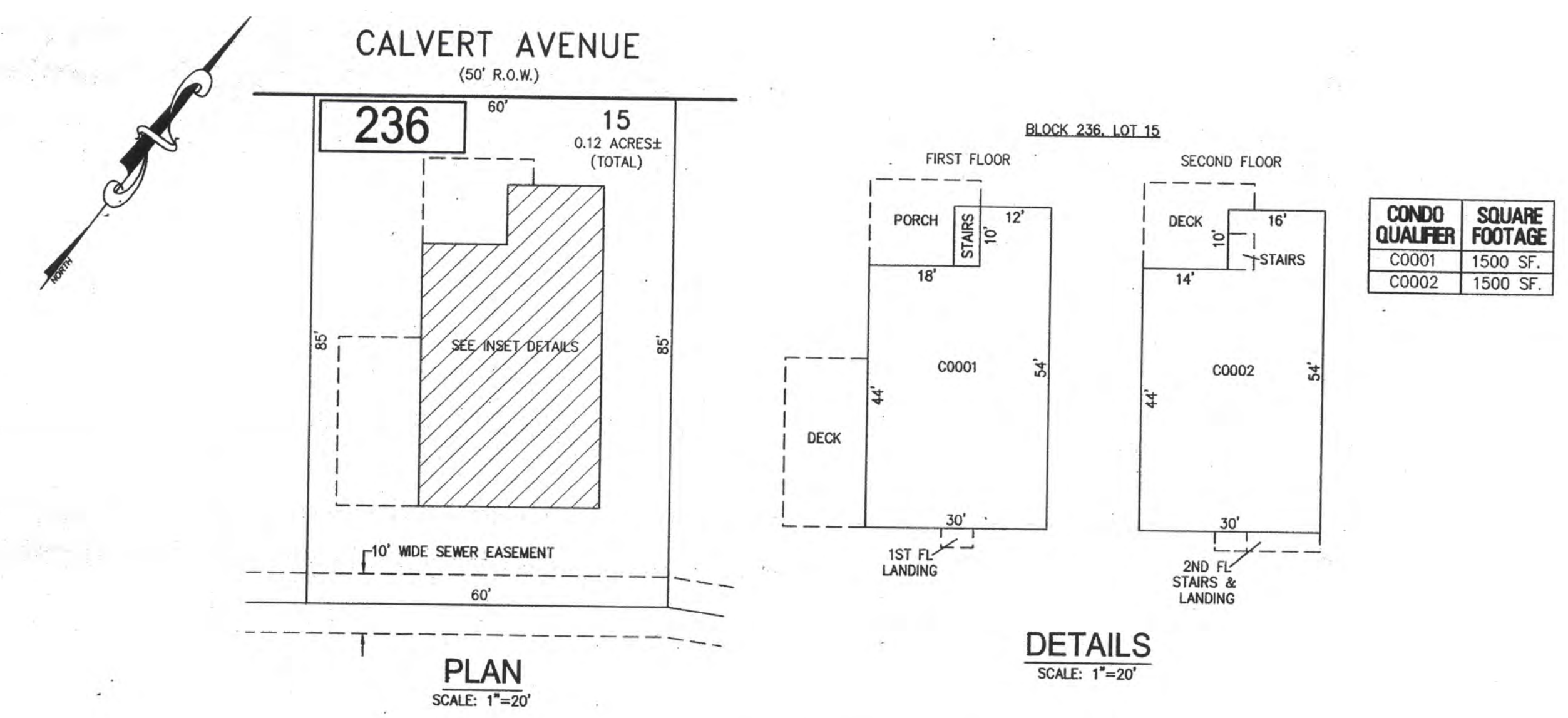
REVISIONS		
DATE	NAME	NO.

NOTE:
THIS SHEET HAS BEEN DRAWN USING COMPUTER AIDED DRAFTING/DESIGN
(CAD/D) AND COORDINATE GEOMETRY (COGO).



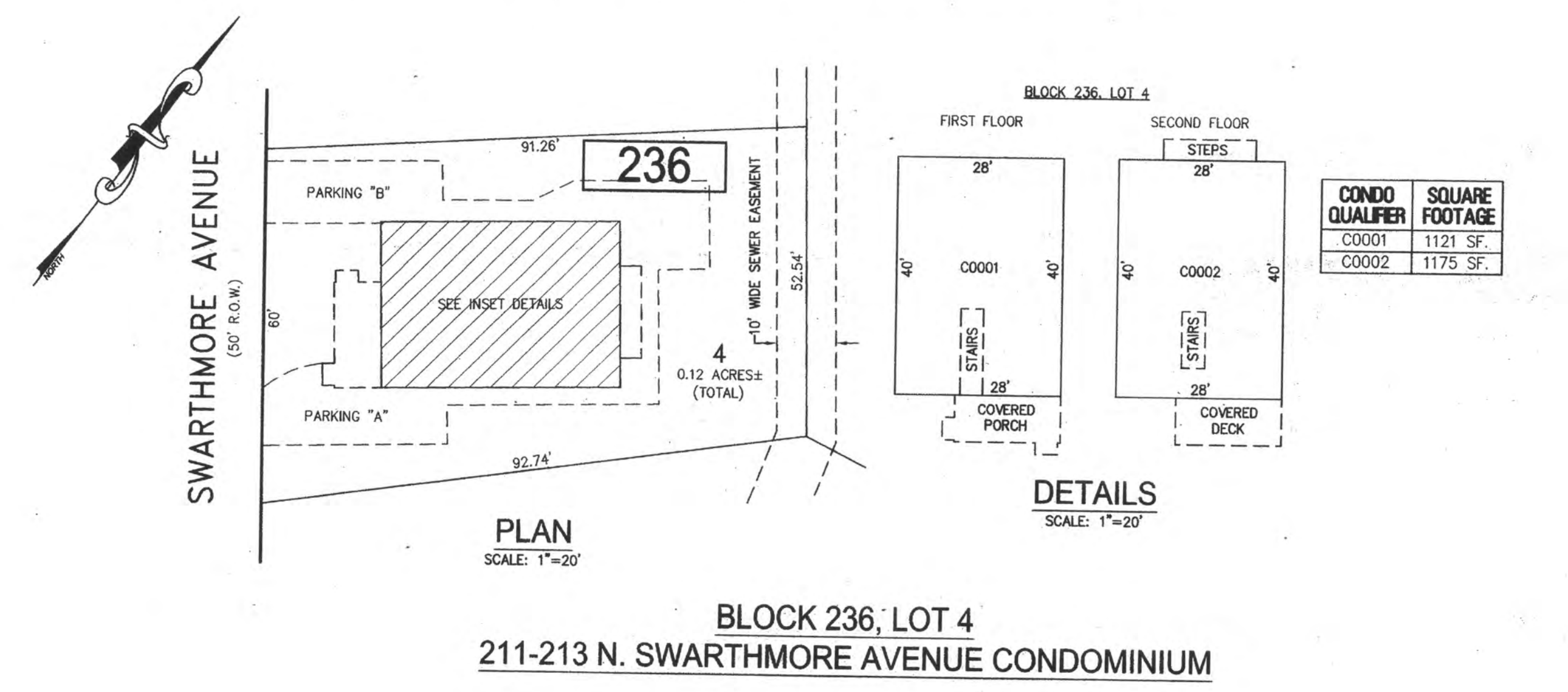
BLOCK 236, LOT 1
201 N. SWARTHMORE AVENUE CONDOMINIUM

CONDO QUALIFIER	SQUARE FOOTAGE
C0001	1554 SF.
C0002	1554 SF.



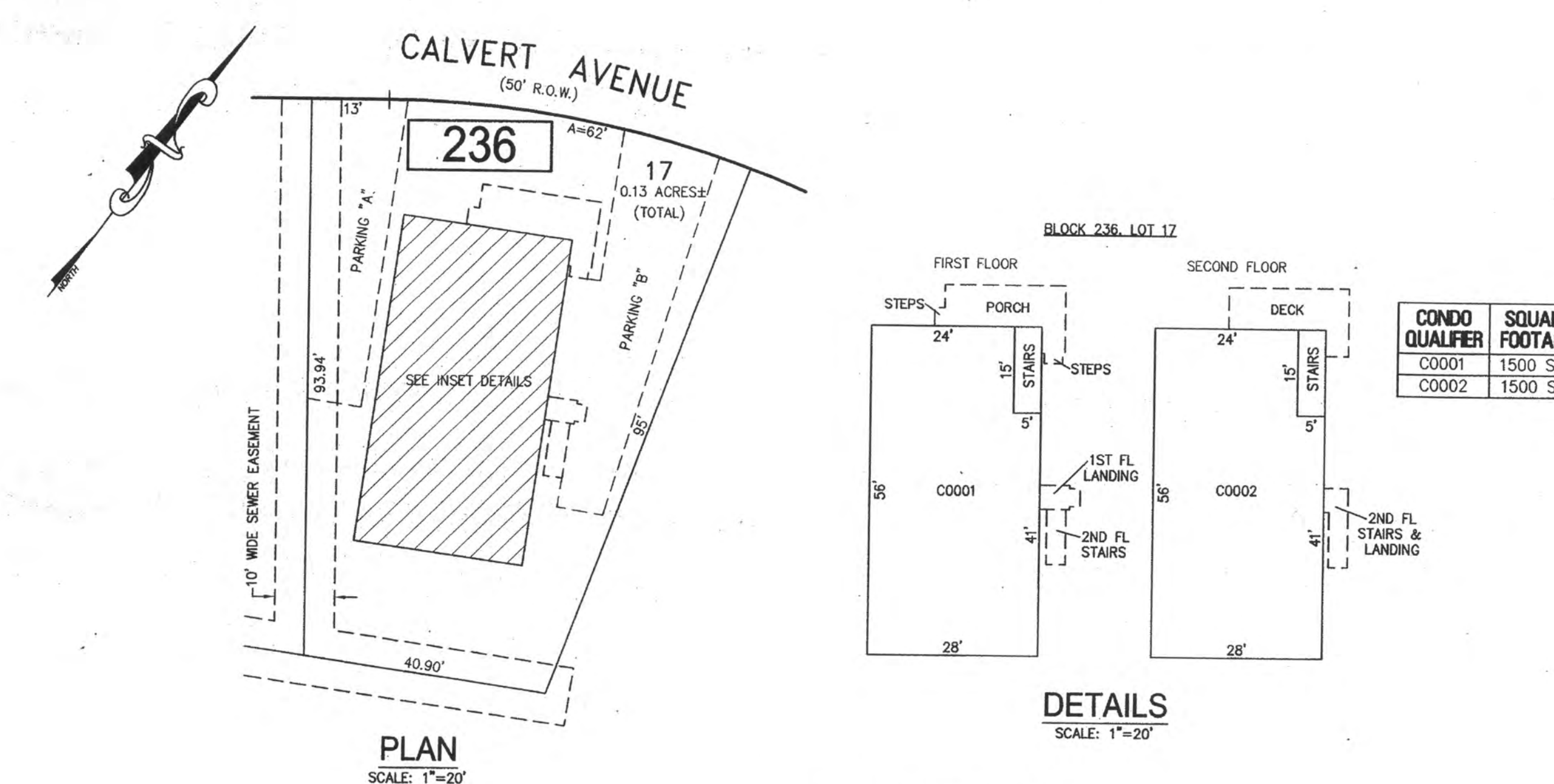
BLOCK 236, LOT 15
7016-18 CALVERT AVENUE CONDOMINIUM

CONDO QUALIFIER	SQUARE FOOTAGE
C0001	1500 SF.
C0002	1500 SF.



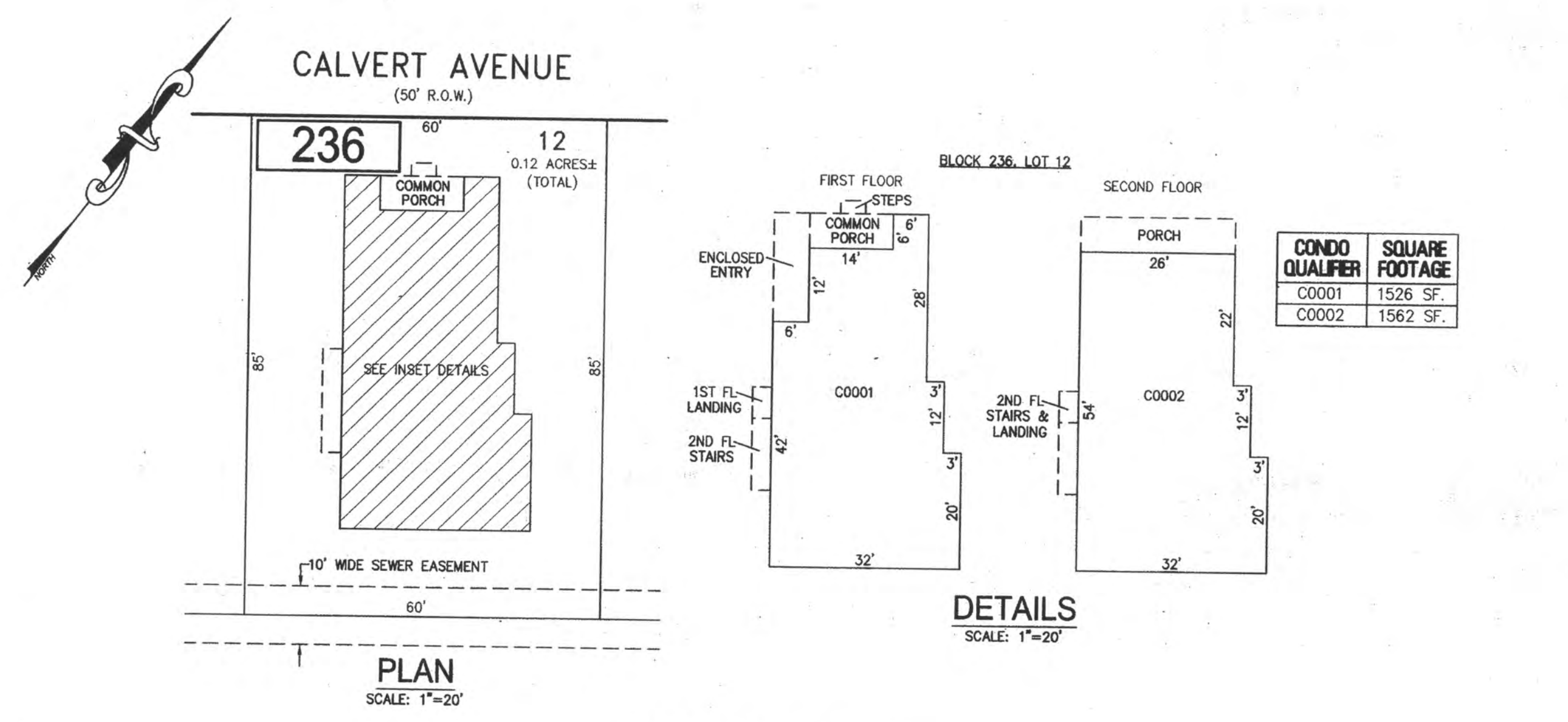
BLOCK 236, LOT 4
211-213 N. SWARTHMORE AVENUE CONDOMINIUM

CONDO QUALIFIER	SQUARE FOOTAGE
C0001	1121 SF.
C0002	1175 SF.



BLOCK 236, LOT 17
7008-10 CALVERT AVENUE CONDOMINIUM

CONDO QUALIFIER	SQUARE FOOTAGE
C0001	1500 SF.
C0002	1500 SF.



BLOCK 236, LOT 12
7028-30 CALVERT AVENUE CONDOMINIUM

CONDO QUALIFIER	SQUARE FOOTAGE
C0001	1526 SF.
C0002	1562 SF.

BLOCK 236, LOT 1
BLOCK 236, LOT 4
BLOCK 236, LOT 12
BLOCK 236, LOT 15
BLOCK 236, LOT 17
SEE SHEET 39

NEW JERSEY DEPARTMENT OF THE TREASURY
DIVISION OF TAXATION
APPROVED AS A TAX MAP PURSUANT TO THE AUTHORITY OF
N.J.S.A. 5:21-15 AND N.J.S.A. 5:21-16
FOR THE DIRECTOR, DIVISION OF TAXATION
Charles E. Adamson
Charles E. Adamson, P.L.L.C. Principal Representative
DATE: JUL 20 2016 SERIAL NO. 1070

TAX MAP
CITY OF VENTNOR
ATLANTIC COUNTY NEW JERSEY
SCALE: NOTED DATE: 2-19-2015
CHARLES E. ADAMSON NJ PROFESSIONAL LAND SURVEYOR LIC. NO. 42827
24 GA 28048700
REMINGTON, VERNICK & WALBERG ENGINEERS
845 N. MAN STREET, PLEASANTVILLE, N.J. 08232
(609) 645-700, FAX (609) 645-7076
WEB SITE ADDRESS: WWW.RVE.COM
TO SHOW CONDITIONS AS OF 7-20-2016