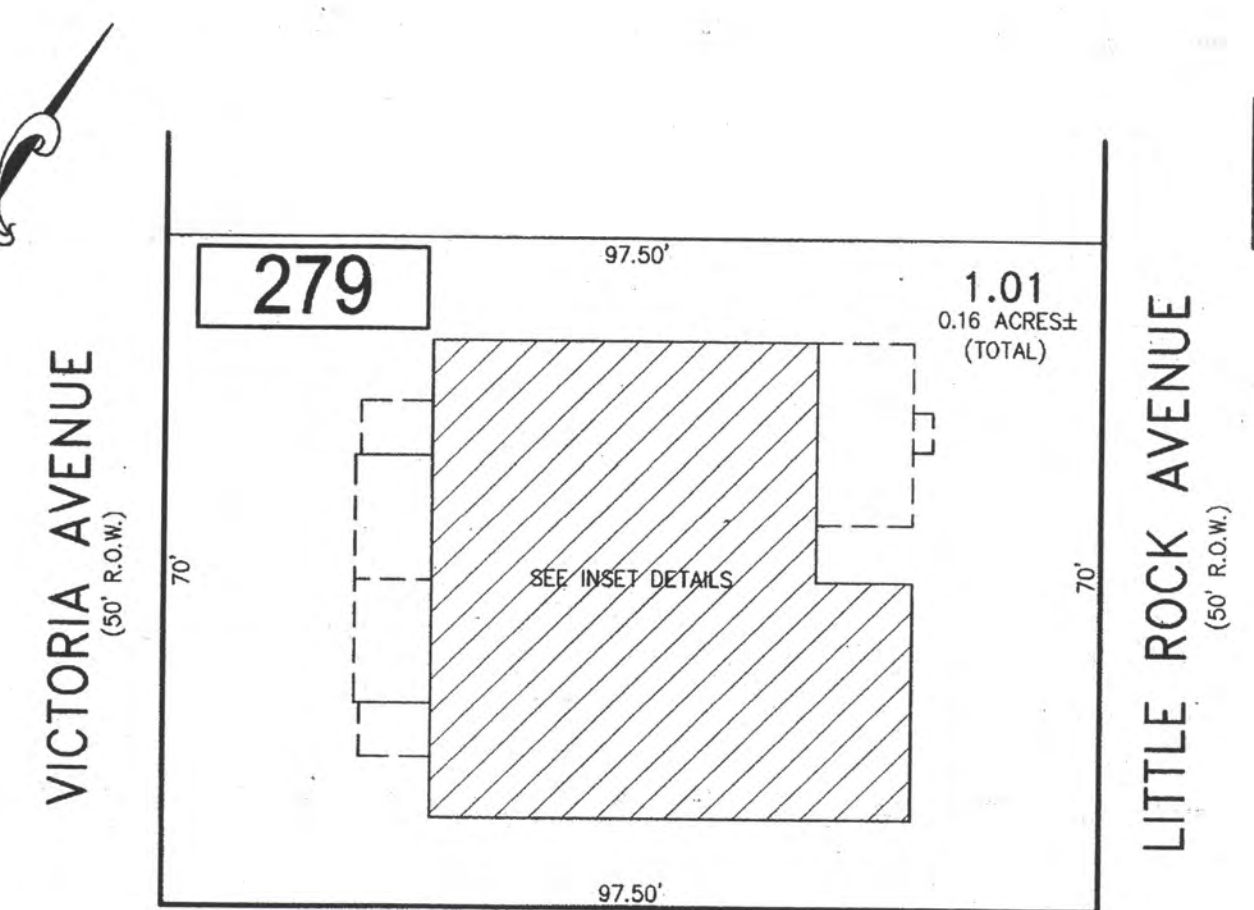


REVISIONS		
DATE	NAME	NO.

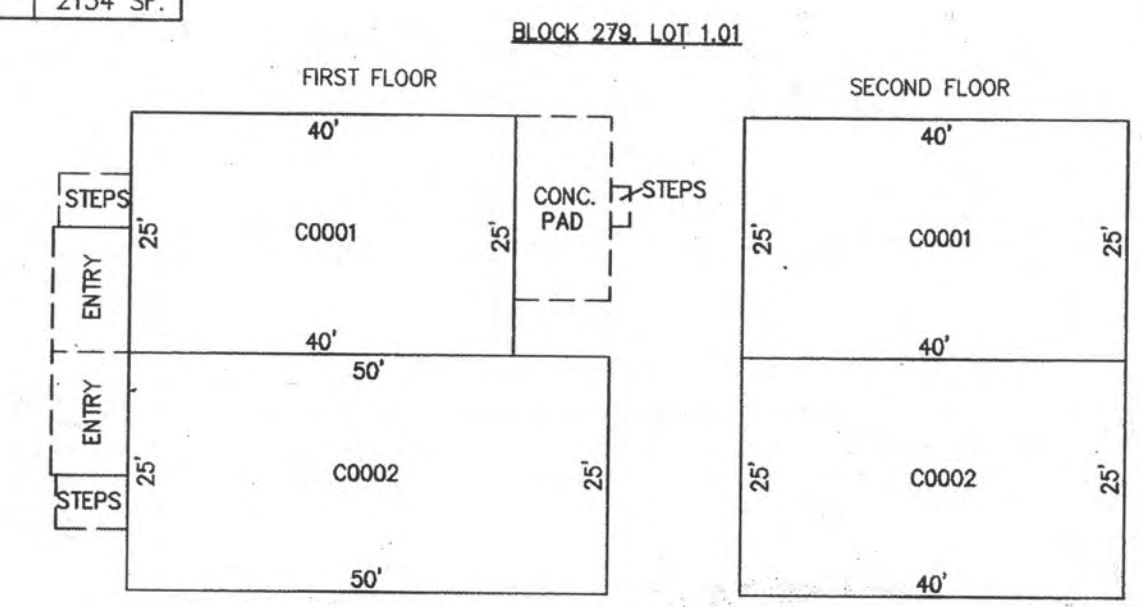
NOTE:
THIS SHEET HAS BEEN DRAWN USING COMPUTER AIDED DRAFTING/DESIGN (CAD/D) AND COORDINATE GEOMETRY (COGO).



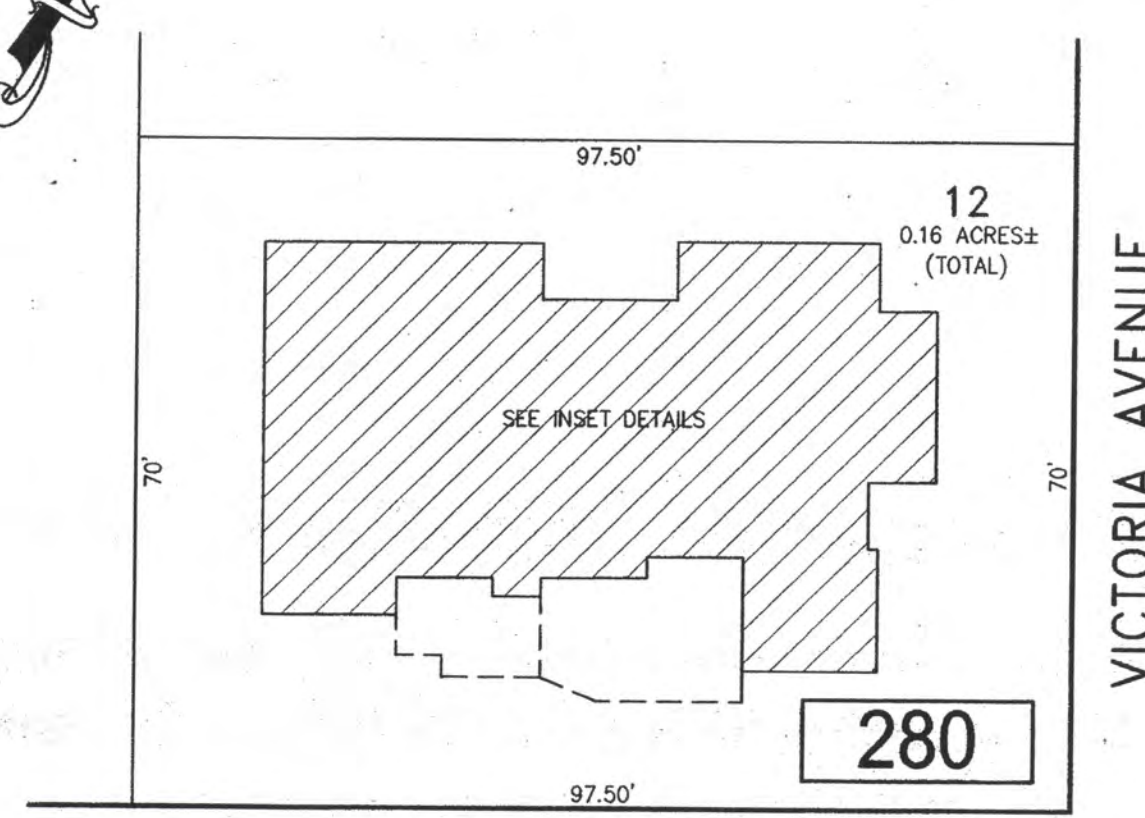
PLAN
SCALE: 1"=20'

BLOCK 279, LOT 1.01
501-03 N. VICTORIA AVENUE CONDOMINIUM

CONDO QUALIFIER	SQUARE FOOTAGE
C0001	2356 SF
C0002	2134 SF



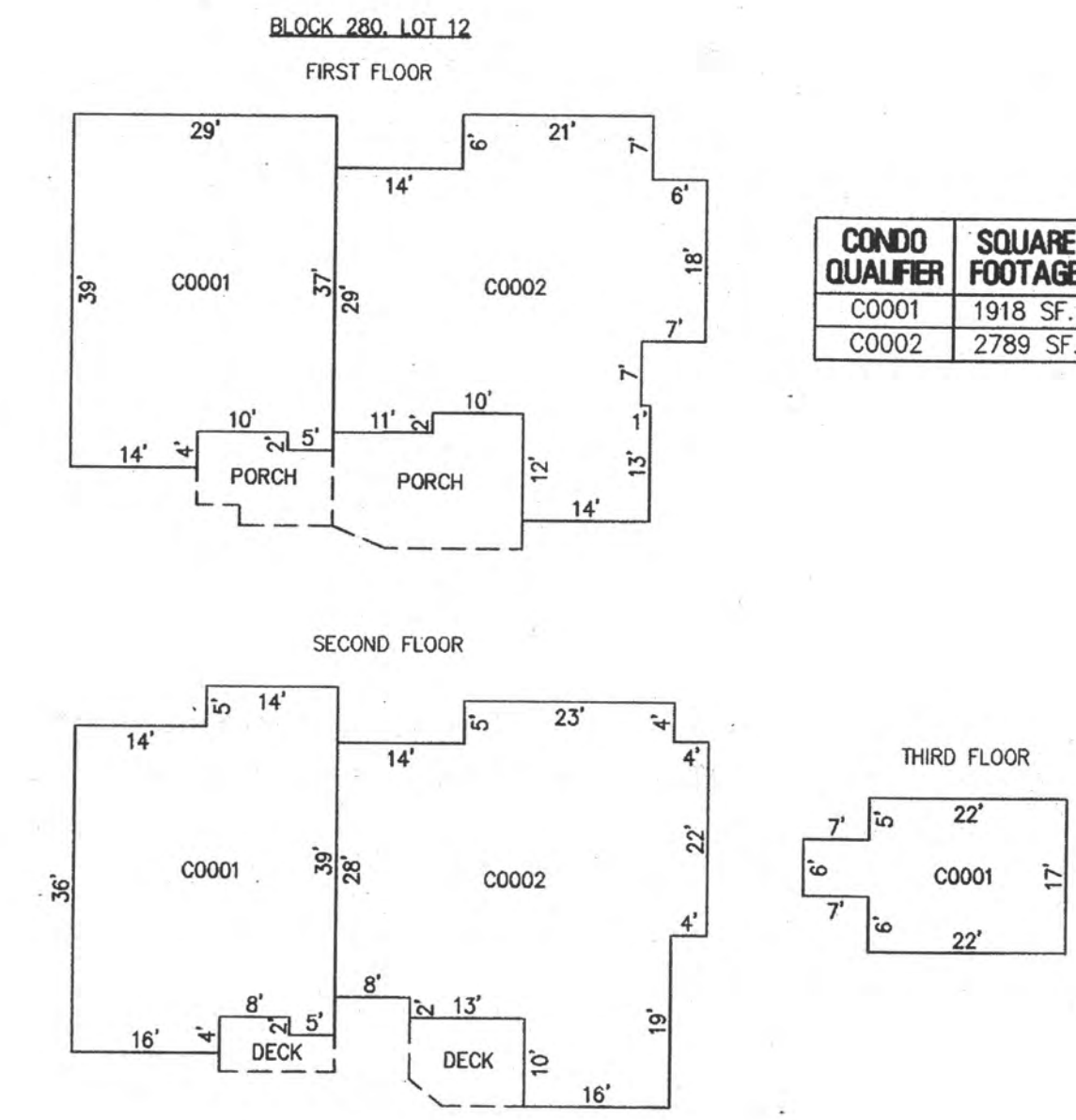
DETAILS
SCALE: 1"=20'



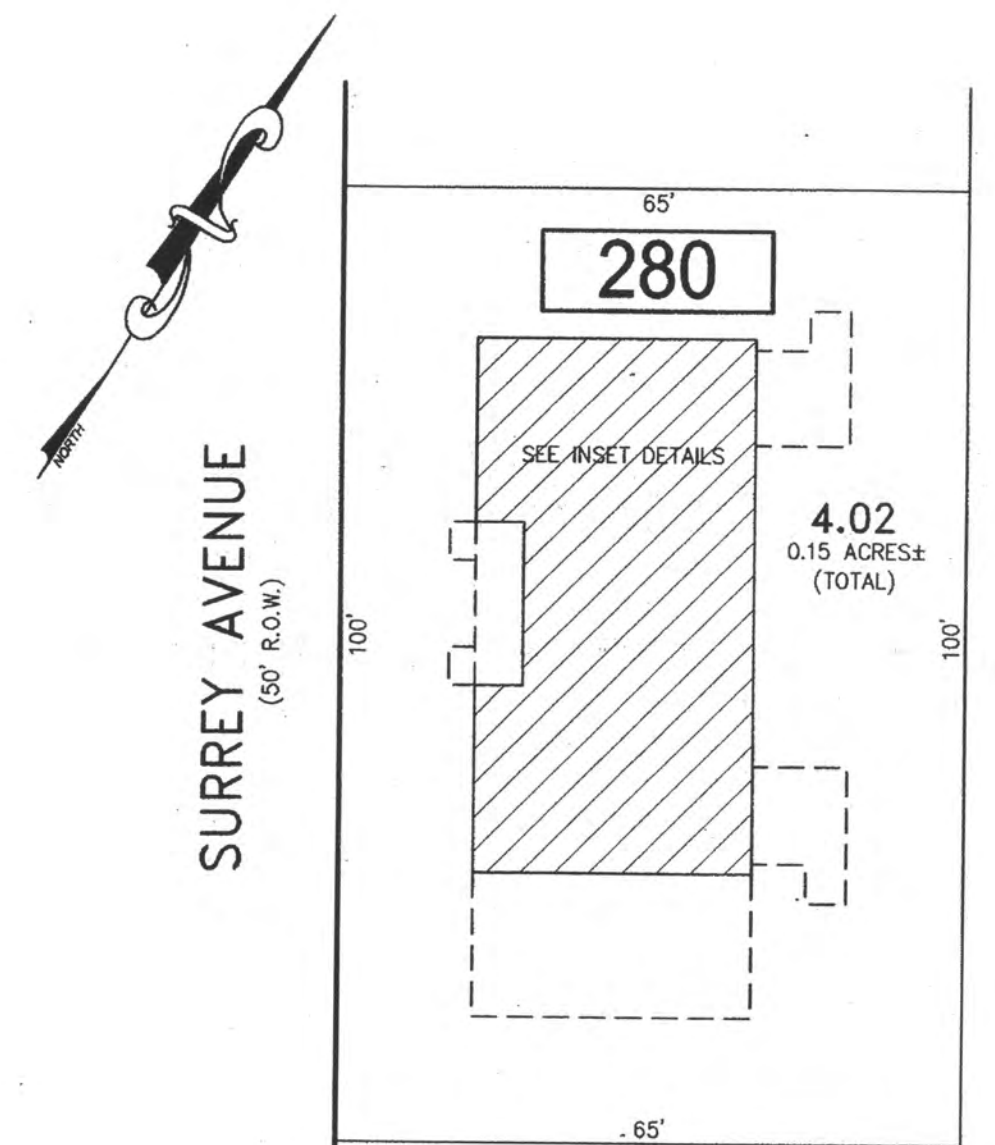
PLAN
SCALE: 1"=20'

BLOCK 280, LOT 12
502 N. VICTORIA AVENUE CONDOMINIUM

CONDO QUALIFIER	SQUARE FOOTAGE
C0001	1918 SF
C0002	2789 SF

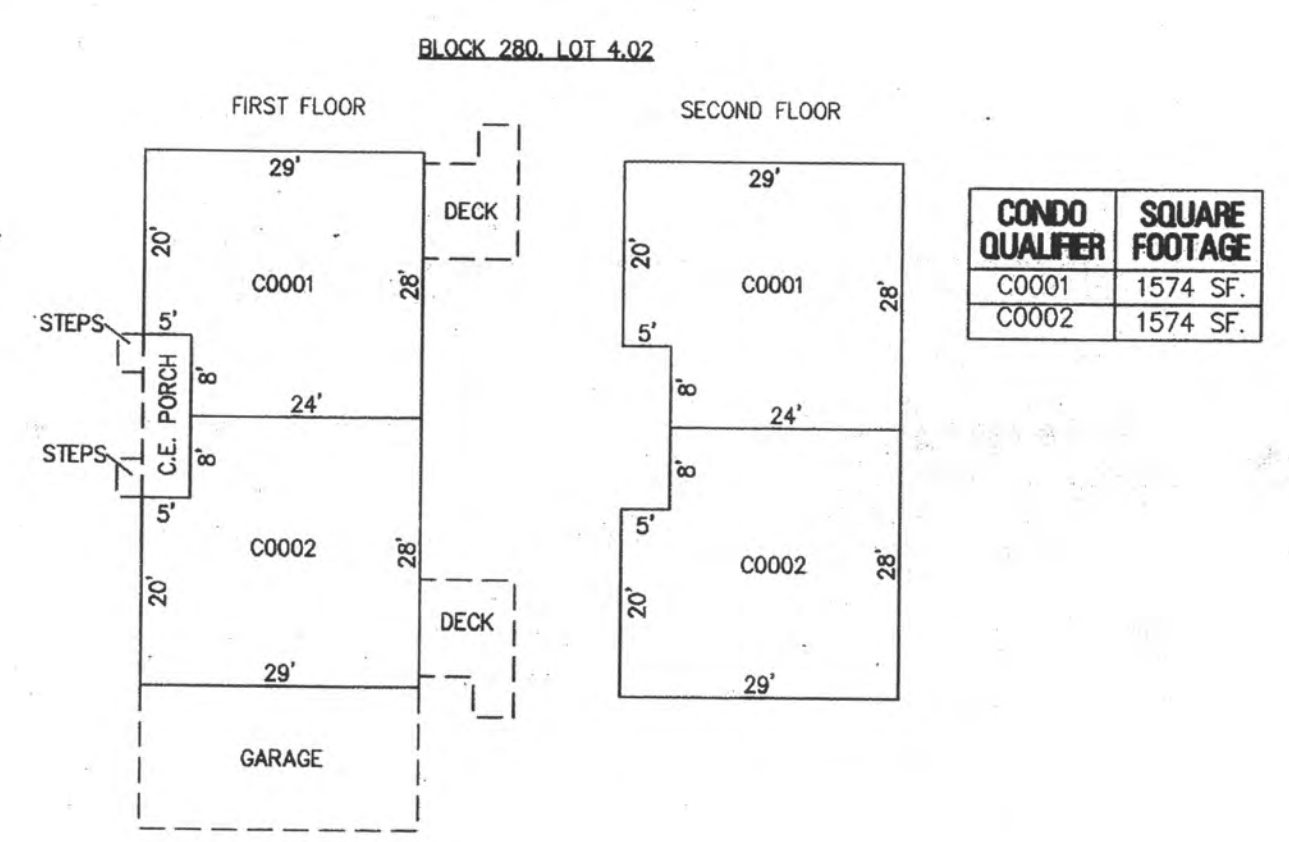


DETAILS
SCALE: 1"=20'



PLAN
SCALE: 1"=20'

BLOCK 280, LOT 4.02
509 N. SURREY AVENUE CONDOMINIUM



DETAILS
SCALE: 1"=20'

CONDO QUALIFIER	SQUARE FOOTAGE
C0001	1574 SF
C0002	1574 SF

BLOCK 279, LOT 1.01
BLOCK 280, LOT 4.02
BLOCK 280, LOT 12
SEE SHEET 46

NEW JERSEY DEPARTMENT OF THE TREASURY
DIVISION OF TAXATION
APPROVED AS A TAX MAP PURSUANT TO THE AUTHORITY OF
R.S.A. 54-18 AND R.S.A. 54-28
FOR THE DIRECTOR, DIVISION OF TAXATION

Judy Miller CA
Stacy Kelly, CTA

DATE JUL 20 2016 SERIAL NO. 1070

TAX MAP
CITY OF VENTNOR
ATLANTIC COUNTY NEW JERSEY
SCALE: NOTED DATE: 2-19-2015

CHARLES E. ADAMSON NJ PROFESSIONAL LAND SURVEYOR LIC. NO. 42827

RV & W REMINGTON, VERNICK & WALBERG ENGINEERS
24 GA 28048700
845 N. MAIN STREET, PLEASANTVILLE, N.J. 08232
(609) 645-780, FAX (609) 645-7076
WEB SITE ADDRESS: WWW.RVW.COM

TO SHOW CONDITIONS AS OF 7-20-2016