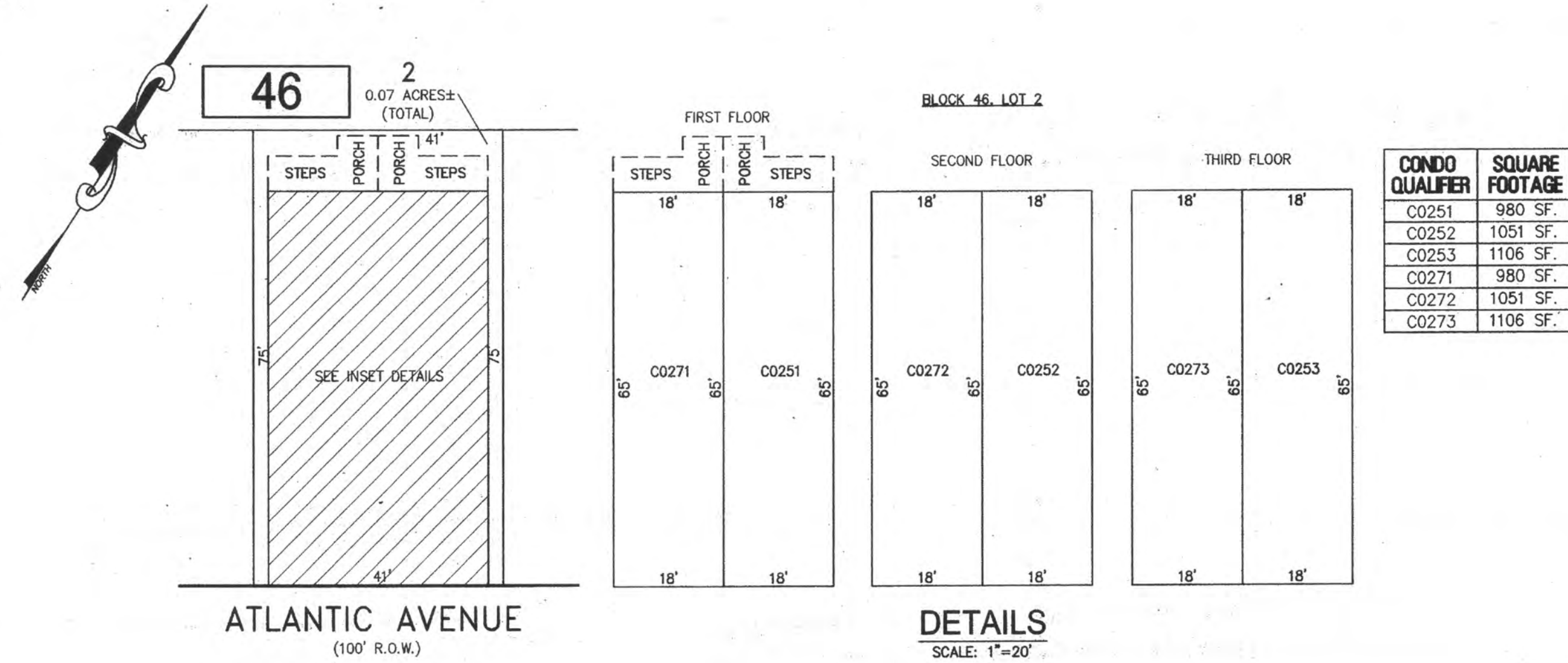


REVISIONS		
DATE	NAME	NO.

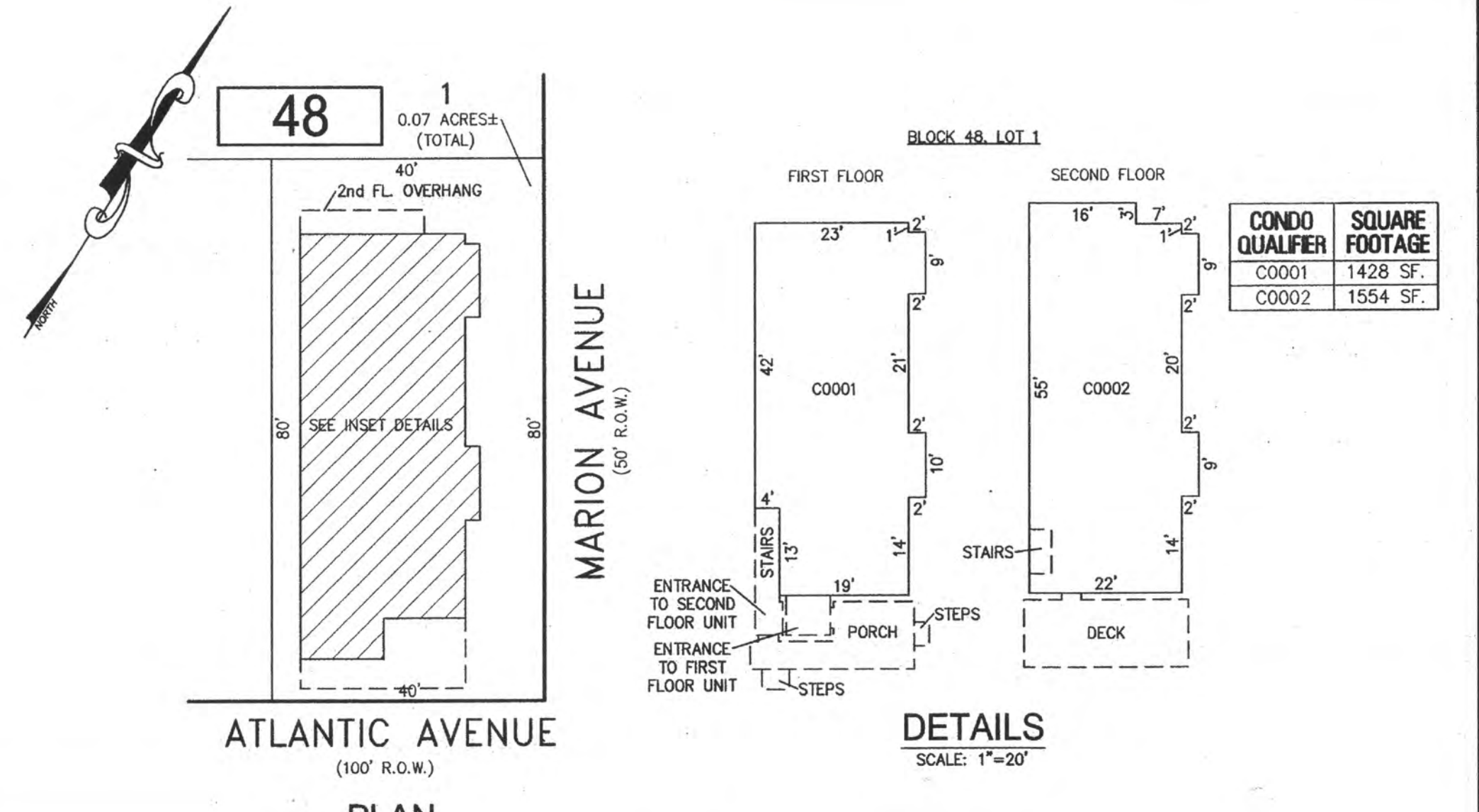
NOTE:
THIS SHEET HAS BEEN DRAWN USING COMPUTER AIDED DRAFTING/DESIGN (CAD/D) AND COORDINATE GEOMETRY (COGO).



PLAN
SCALE: 1"=20'

DETAILS
SCALE: 1"=20'

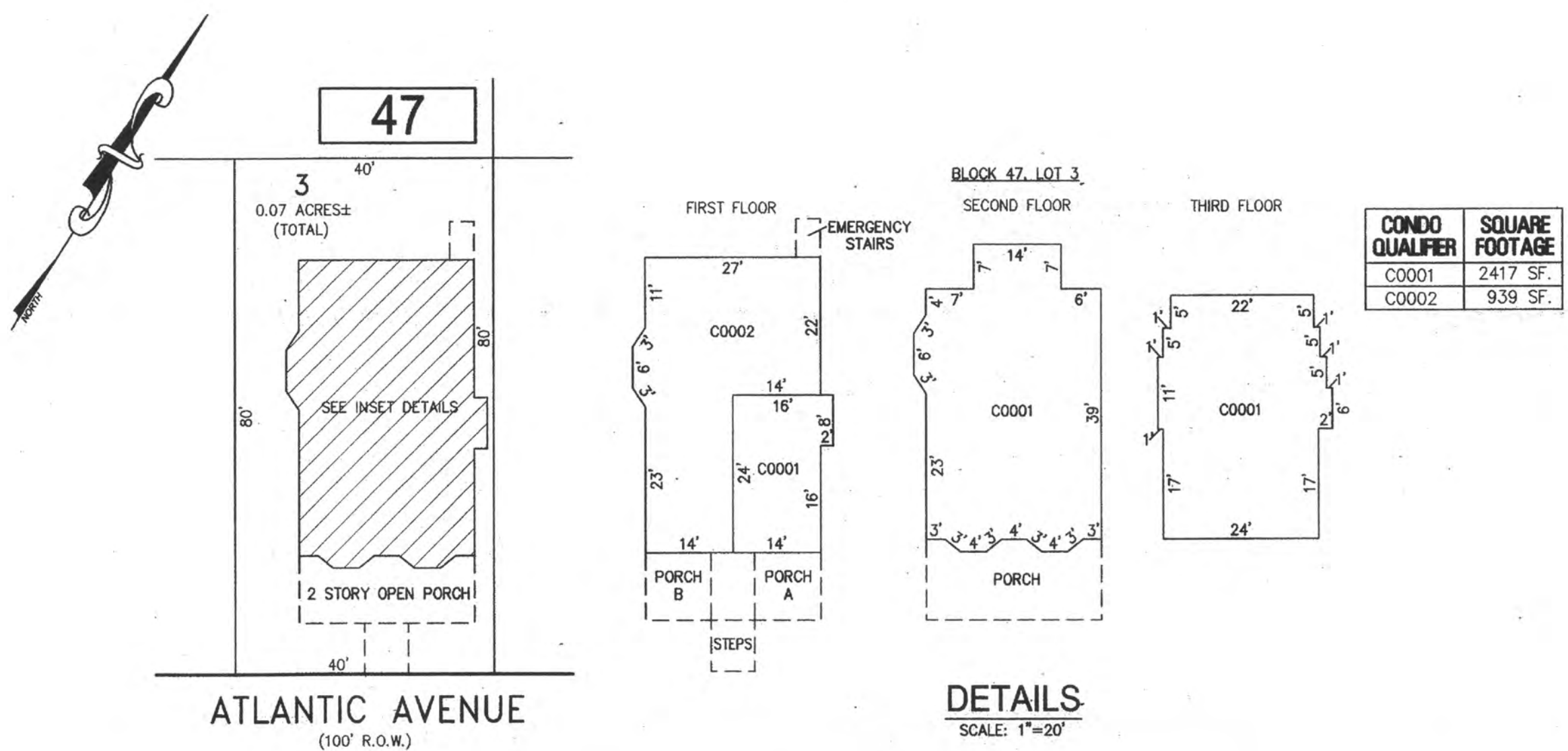
BLOCK 46, LOT 2
4825-4827 ATLANTIC AVENUE CONDOMINIUM



PLAN
SCALE: 1"=20'

DETAILS
SCALE: 1"=20'

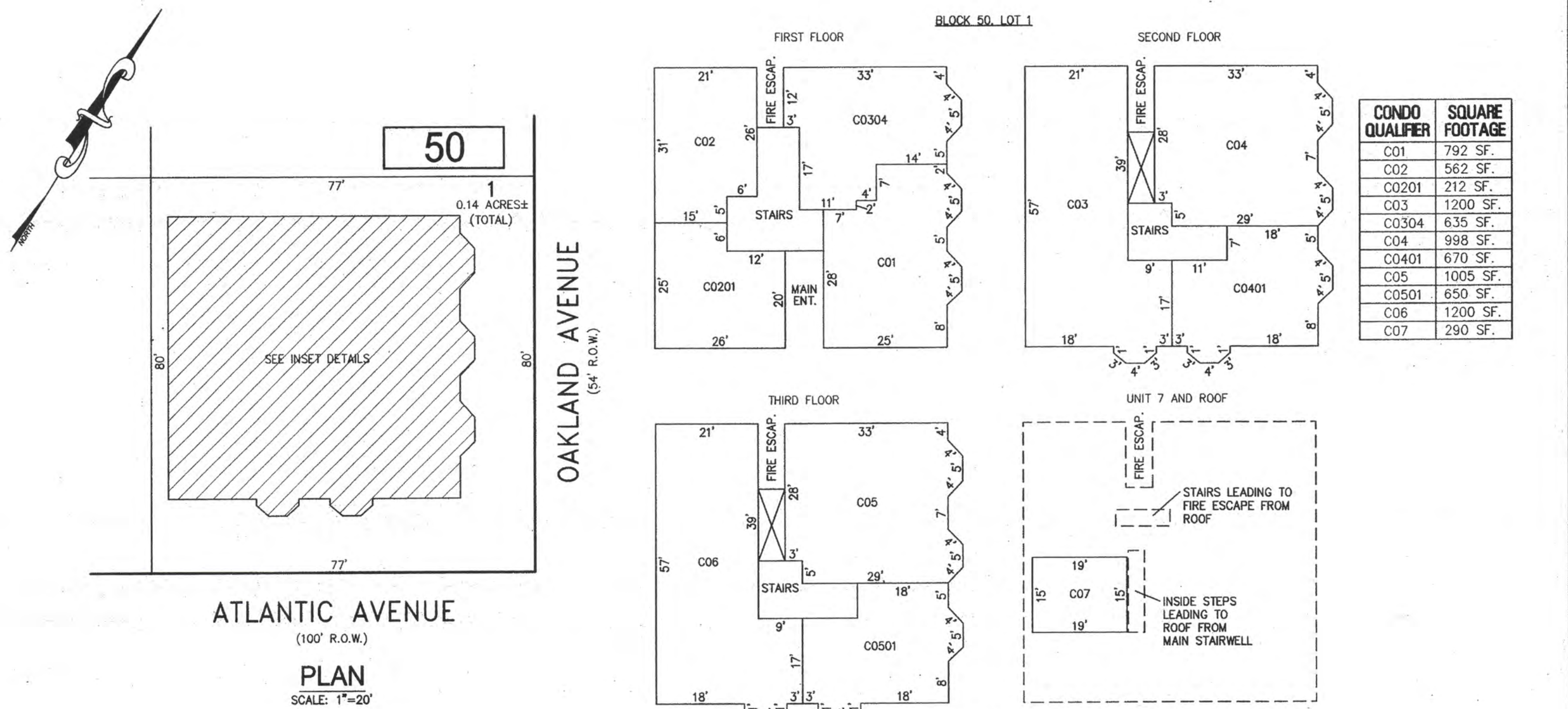
BLOCK 48, LOT 1
4909 ATLANTIC AVENUE CONDOMINIUM



PLAN
SCALE: 1"=20'

DETAILS
SCALE: 1"=20'

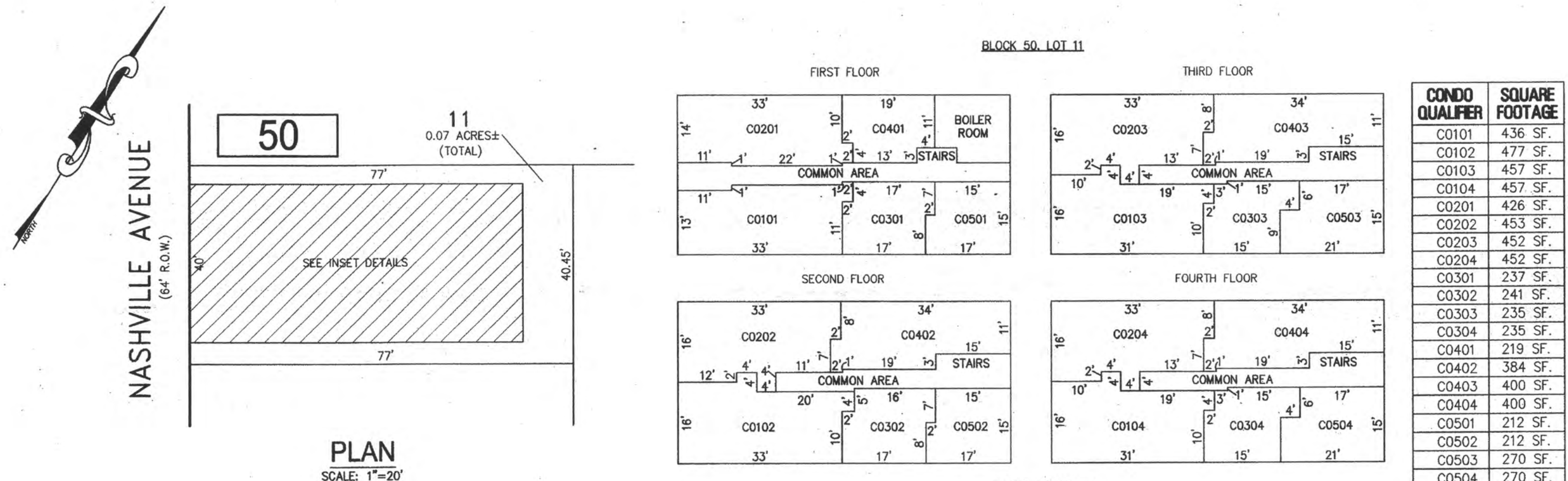
BLOCK 47, LOT 3
4905 ATLANTIC AVENUE CONDOMINIUM



PLAN
SCALE: 1"=20'

DETAILS
SCALE: 1"=20'

BLOCK 50, LOT 1
OAKLAND BEACH CONDOMINIUM
5003 ATLANTIC AVENUE



PLAN
SCALE: 1"=20'

DETAILS
SCALE: 1"=20'

BLOCK 50, LOT 11
THE NASHVILLE CONDOMINIUM
11 S NASHVILLE AVENUE

BLOCK 46, LOT 2
BLOCK 47, LOT 3
BLOCK 48, LOT 1
BLOCK 50, LOT 1
BLOCK 50, LOT 11
SEE SHEET 9

NEW JERSEY DEPARTMENT OF THE TREASURY
APPROVED AS A TAX MAP PURSUANT TO THE AUTHORITY OF
N.J.S.A. 54:1-18 AND N.J.S.A. 54:26-1
FOR THE DIRECTOR, DIVISION OF TAXATION
Charles E. Adamson
Charles E. Adamson, P.E., Civil Property Administrator
Shelly Kelly, C.T.A. Principal Plot Representative
DATE: JUL 20 2016 SERIAL NO. 1070

TAX MAP
CITY OF VENTNOR
ATLANTIC COUNTY NEW JERSEY
SCALE: NOTED DATE: 2-19-2015
CHARLES E. ADAMSON NJ PROFESSIONAL LAND SURVEYOR LIC. NO. 42627
24 GA 28048700
REMINGTON, VERNICK & WALBERG ENGINEERS
845 N. MAIN STREET, PLEASANTVILLE, N.J. 08232
(609) 645-7100, FAX (609) 645-7076
WEB SITE ADDRESS: WWW.RVW.COM
TO SHOW CONDITIONS AS OF 7-20-2016