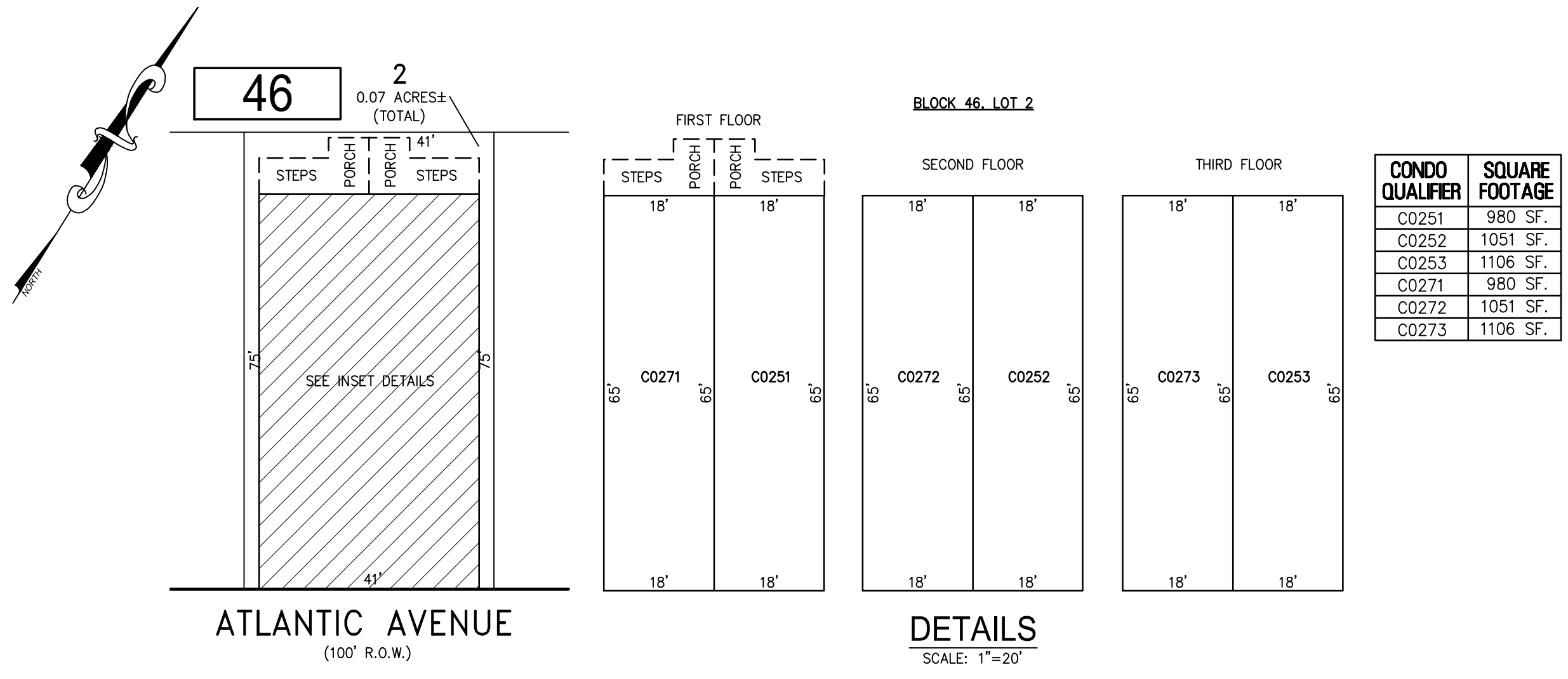


REVISIONS		
DATE	NAME	NO.

**NOTE:**  
THIS SHEET HAS BEEN DRAWN USING COMPUTER AIDED DRAFTING/DESIGN (CAD/D) AND COORDINATE GEOMETRY (COGO).

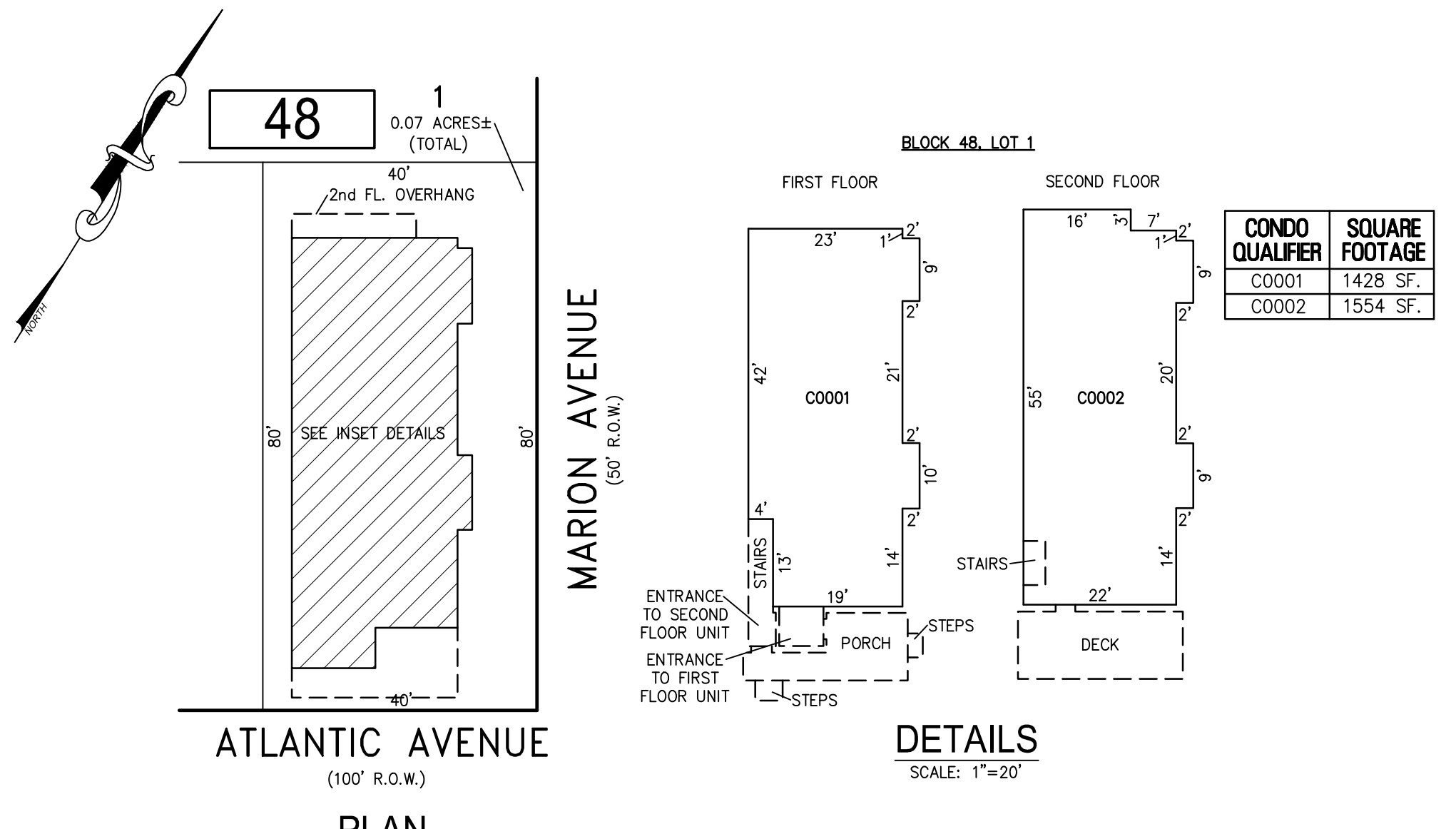


CONDO QUALIFIER	SQUARE FOOTAGE
C0251	980 SF.
C0252	1051 SF.
C0253	1106 SF.
C0271	980 SF.
C0272	1051 SF.
C0273	1106 SF.

**PLAN**  
SCALE: 1"=20'

**DETAILS**  
SCALE: 1"=20'

**BLOCK 46, LOT 2**  
4825-4827 ATLANTIC AVENUE CONDOMINIUM

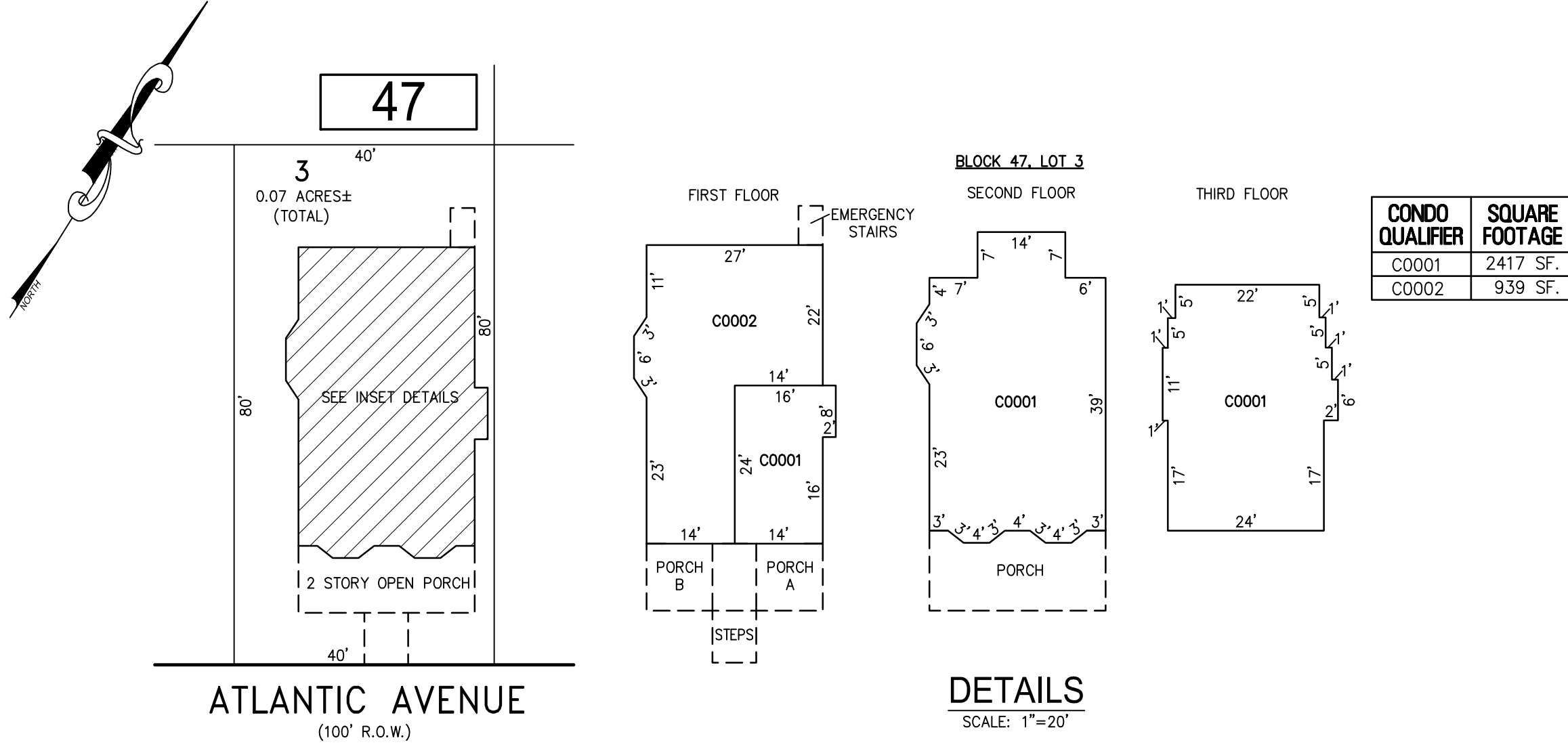


CONDO QUALIFIER	SQUARE FOOTAGE
C0001	1428 SF.
C0002	1554 SF.

**PLAN**  
SCALE: 1"=20'

**DETAILS**  
SCALE: 1"=20'

**BLOCK 48, LOT 1**  
4909 ATLANTIC AVENUE CONDOMINIUM

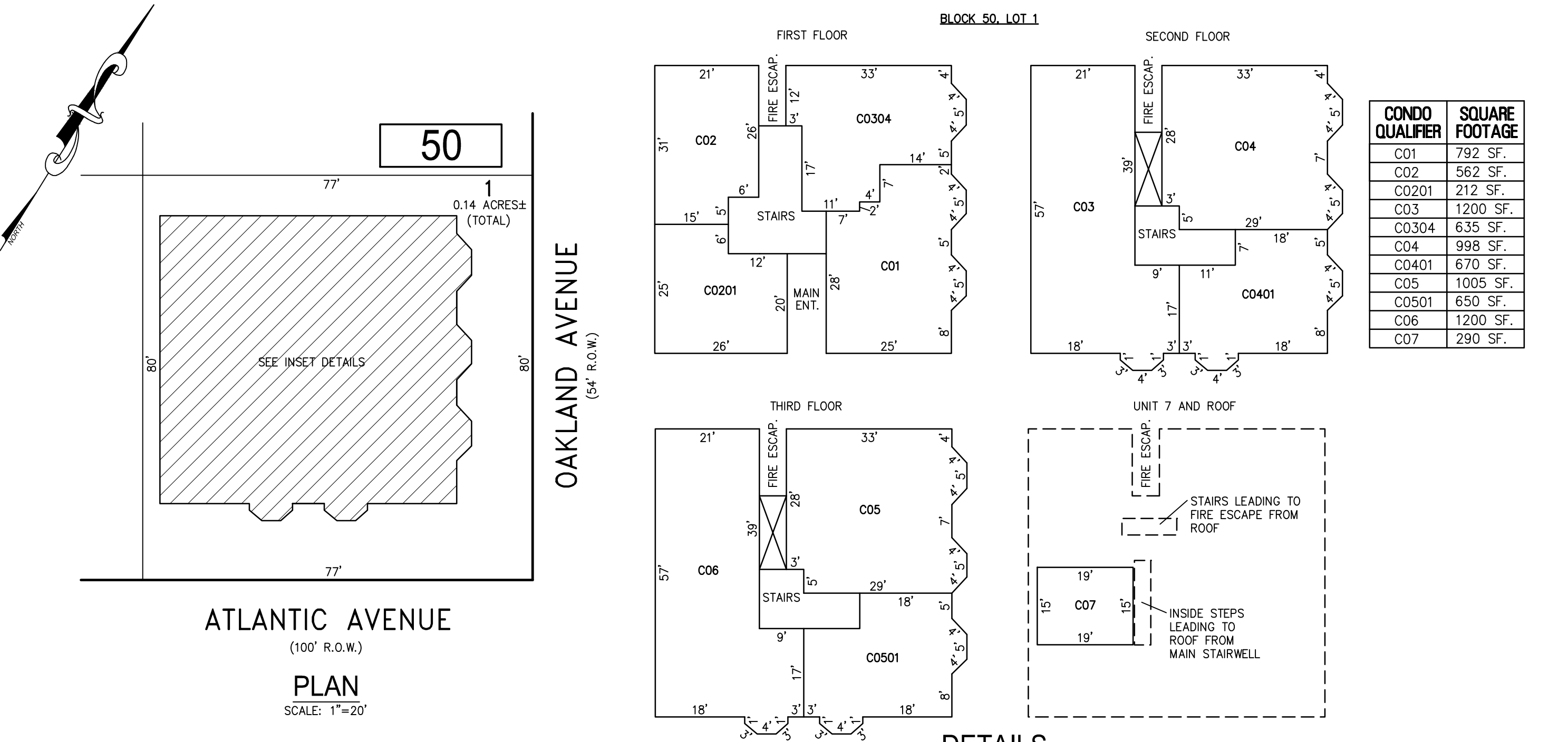


CONDO QUALIFIER	SQUARE FOOTAGE
C0001	2417 SF.
C0002	939 SF.

**PLAN**  
SCALE: 1"=20'

**DETAILS**  
SCALE: 1"=20'

**BLOCK 47, LOT 3**  
4905 ATLANTIC AVENUE CONDOMINIUM

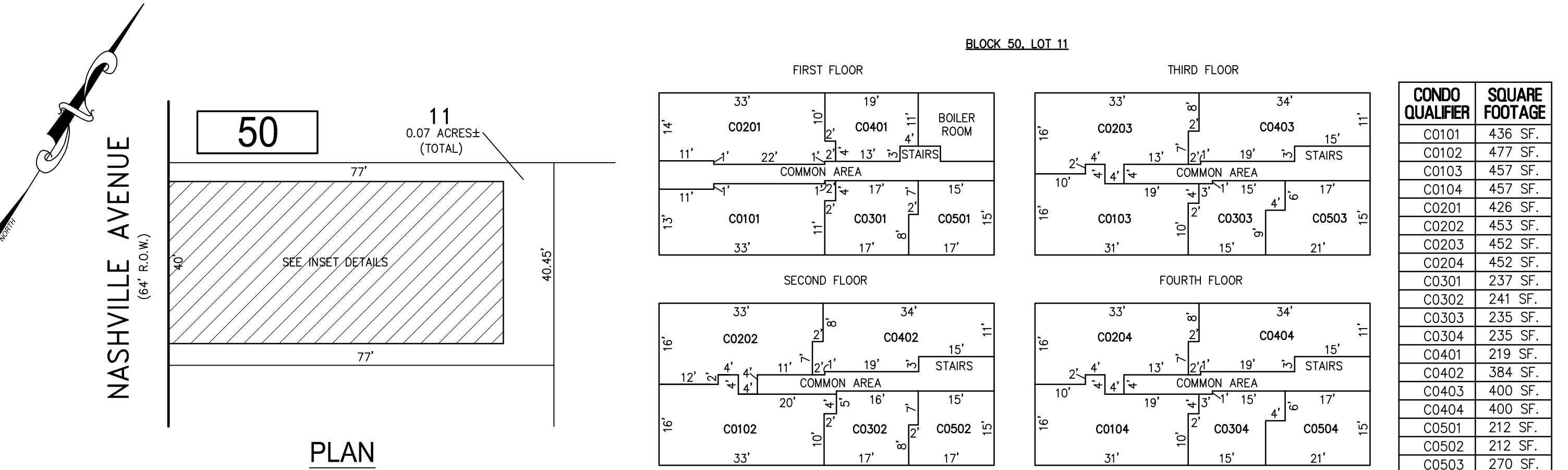


CONDO QUALIFIER	SQUARE FOOTAGE
C01	792 SF.
C02	562 SF.
C0201	212 SF.
C03	1200 SF.
C0304	635 SF.
C04	998 SF.
C0401	670 SF.
C05	1005 SF.
C0501	650 SF.
C06	1200 SF.
C07	290 SF.

**PLAN**  
SCALE: 1"=20'

**DETAILS**  
SCALE: 1"=20'

**BLOCK 50, LOT 1**  
OAKLAND BEACH CONDOMINIUM  
5003 ATLANTIC AVENUE



CONDO QUALIFIER	SQUARE FOOTAGE
C0101	436 SF.
C0102	477 SF.
C0103	457 SF.
C0104	457 SF.
C0201	426 SF.
C0202	453 SF.
C0203	452 SF.
C0204	452 SF.
C0301	237 SF.
C0302	241 SF.
C0303	235 SF.
C0304	235 SF.
C0401	219 SF.
C0402	384 SF.
C0403	400 SF.
C0404	400 SF.
C0501	212 SF.
C0502	212 SF.
C0503	270 SF.
C0504	270 SF.

**PLAN**  
SCALE: 1"=20'

**DETAILS**  
SCALE: 1"=20'

**BLOCK 50, LOT 11**  
THE NASHVILLE CONDOMINIUM  
11 S NASHVILLE AVENUE

BLOCK 46, LOT 2  
BLOCK 47, LOT 3  
BLOCK 48, LOT 1  
BLOCK 50, LOT 1  
BLOCK 50, LOT 11  
SEE SHEET 9

"THIS TAX MAP SHEET HAS BEEN DIGITALLY REVISED USING COMPUTER-AIDED DRAFTING/DESIGN (CADD) & COORDINATE GEOMETRY (COGO). IT IS BASED ON THE ORIGINAL DIGITALLY DRAWN TAX MAP PLATE BEARING THE OFFICIAL NEW JERSEY DIVISION TAXATION APPROVAL STAMP WITH APPROVAL DATE JULY, 20, 2016. SERIAL NUMBER 1070 AND SIGNATURE OF JUDY P. MILLER, CTA, CHIEF PROPERTY ADMINISTRATION AND SHELLY REILLY, CTA, PRINCIPAL FIELD REPRESENTATIVE. THE ORIGINAL DIGITALLY DRAWN TAX MAP PLATE WITH THE OFFICIAL APPROVAL STAMP IS ON FILE WITH REMINGTON & VERNICK ENGINEERS."

**TAX MAP**  
**CITY OF VENTNOR**  
ATLANTIC COUNTY NEW JERSEY  
SCALE: NOTED DATE: 2-19-2015

**CHARLES E. ADAMSON** NJ PROFESSIONAL LAND SURVEYOR LIC. NO. 42627  
24 GA 28048700

**RV & W** REMINGTON, VERNICK & WALBERG ENGINEERS  
845 N. MAIN STREET, PLEASANTVILLE, NJ 08232  
(609) 645-700, FAX (609) 645-7076  
WEB SITE ADDRESS: WWW.RVW.COM  
TO SHOW CONDITIONS AS OF 2-10-2021