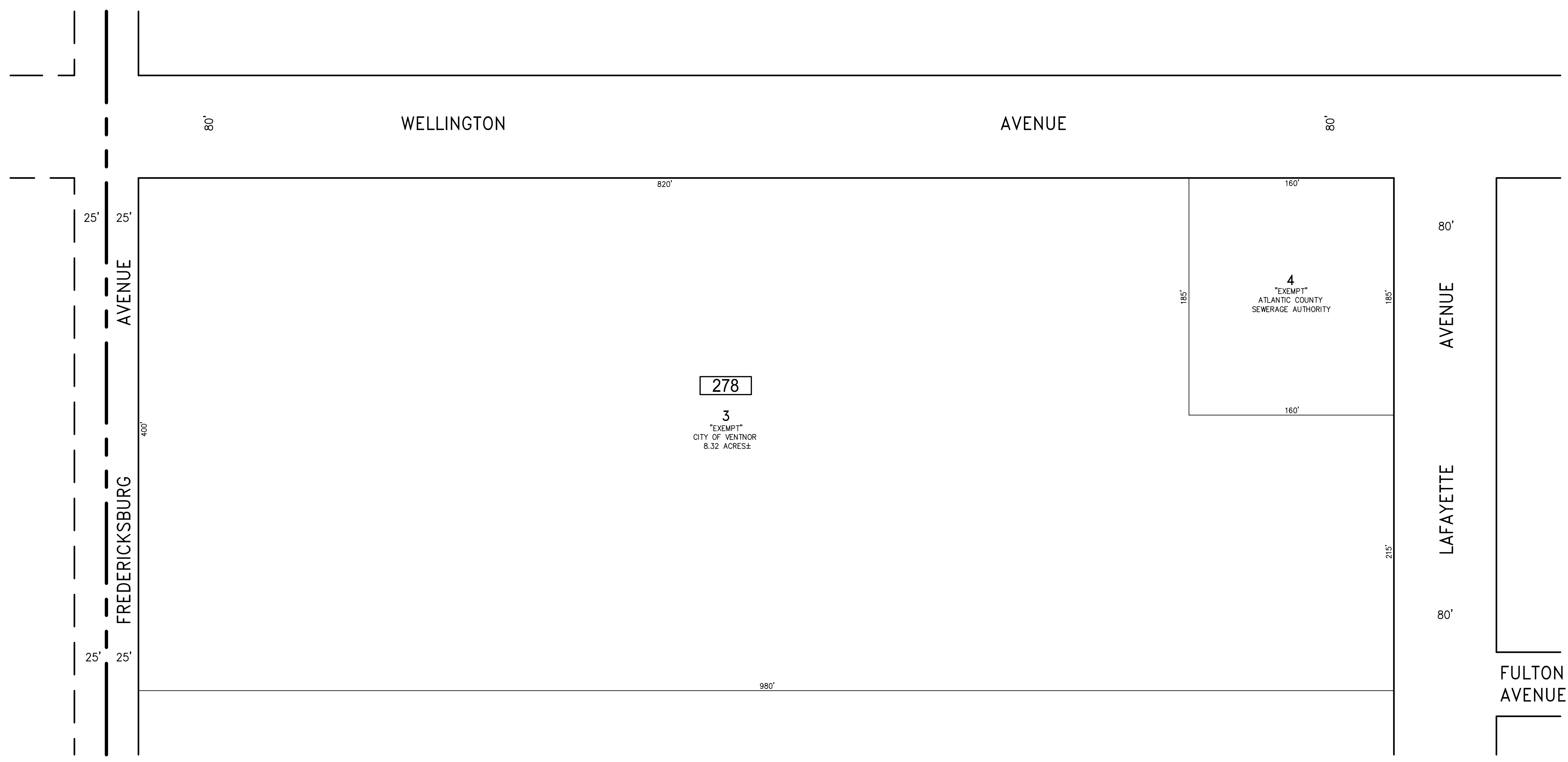


REVISIONS		
DATE	NAME	NO.

**NOTE:**  
 THIS SHEET HAS BEEN DRAWN USING COMPUTER AIDED DRAFTING/DESIGN (CADD) AND COORDINATE GEOMETRY (COGO).

SHEET 49

**CITY OF MARGATE  
 COUNTY OF ATLANTIC**



SHEET 53

SHEET 45

"THIS TAX MAP SHEET HAS BEEN DIGITALLY REVISED USING COMPUTER-AIDED DRAFTING/DESIGN (CADD) & COORDINATE GEOMETRY (COGO). IT IS BASED ON THE ORIGINAL DIGITALLY DRAWN TAX MAP PLATE BEARING THE OFFICIAL NEW JERSEY DIVISION TAXATION APPROVAL STAMP WITH APPROVAL DATE JULY, 20, 2016. SERIAL NUMBER 1070 AND SIGNATURE OF JUDY P. MILLER, CTA, CHIEF PROPERTY ADMINISTRATION AND SHELLY REILLY, CTA, PRINCIPAL FIELD REPRESENTATIVE. THE ORIGINAL DIGITALLY DRAWN TAX MAP PLATE WITH THE OFFICIAL APPROVAL STAMP IS ON FILE WITH REMINGTON & VERNICK ENGINEERS."

**TAX MAP**  
**CITY OF VENTNOR**  
 ATLANTIC COUNTY NEW JERSEY  
 SCALE: 1" = 50' DATE: 2-19-2015

**CHARLES E. ADAMSON** NJ PROFESSIONAL LAND SURVEYOR LIC. NO. 42627  
24 GA 28048700

**RV & W**  
**REMINGTON, VERNICK & WALBERG ENGINEERS**  
 845 N. MAIN STREET, PLEASANTVILLE, NJ 08232  
 (609) 645-7100, FAX (609) 645-7076  
 WEB SITE ADDRESS: WWW.RVW.COM  
 TO SHOW CONDITIONS AS OF 2-10-2021