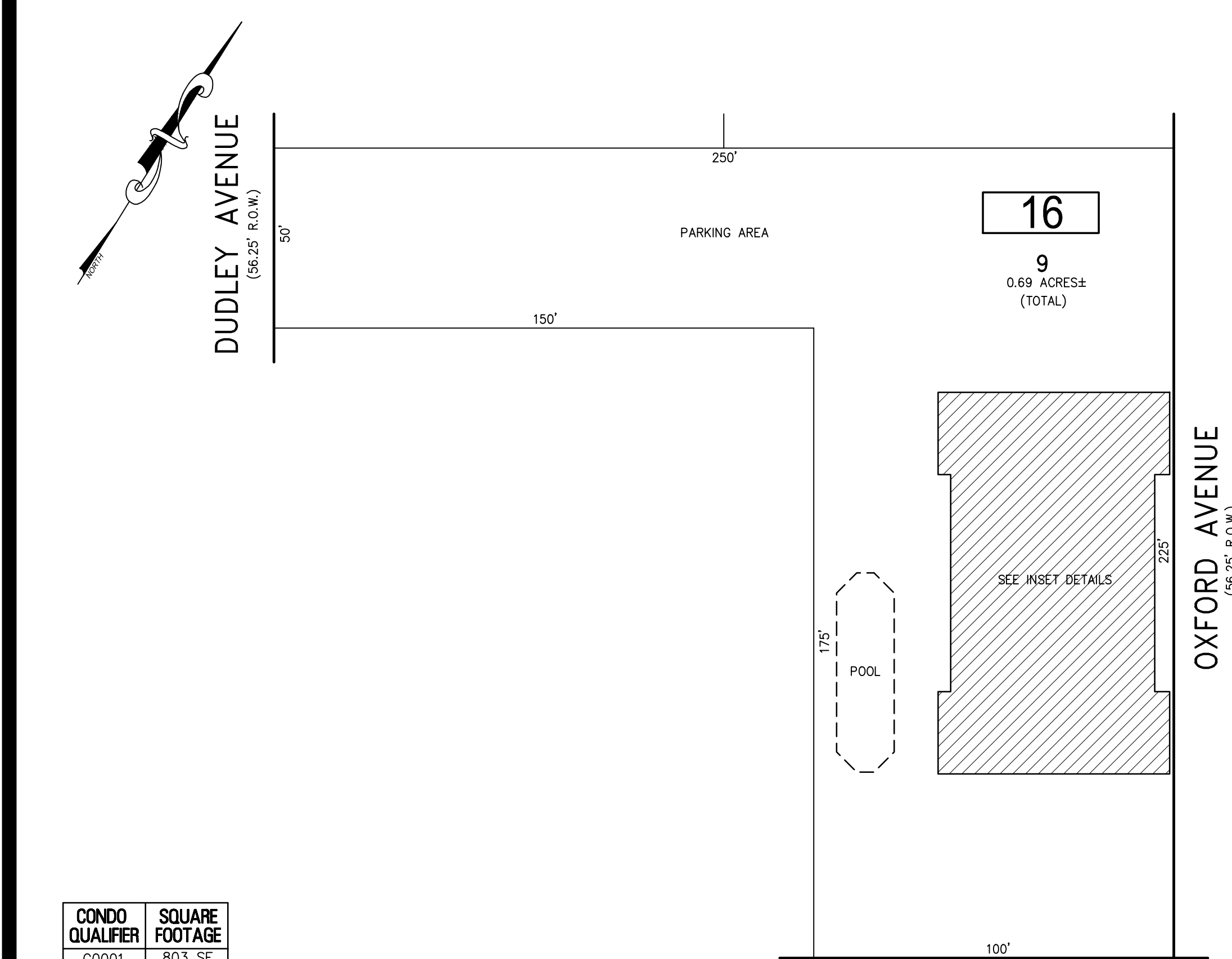
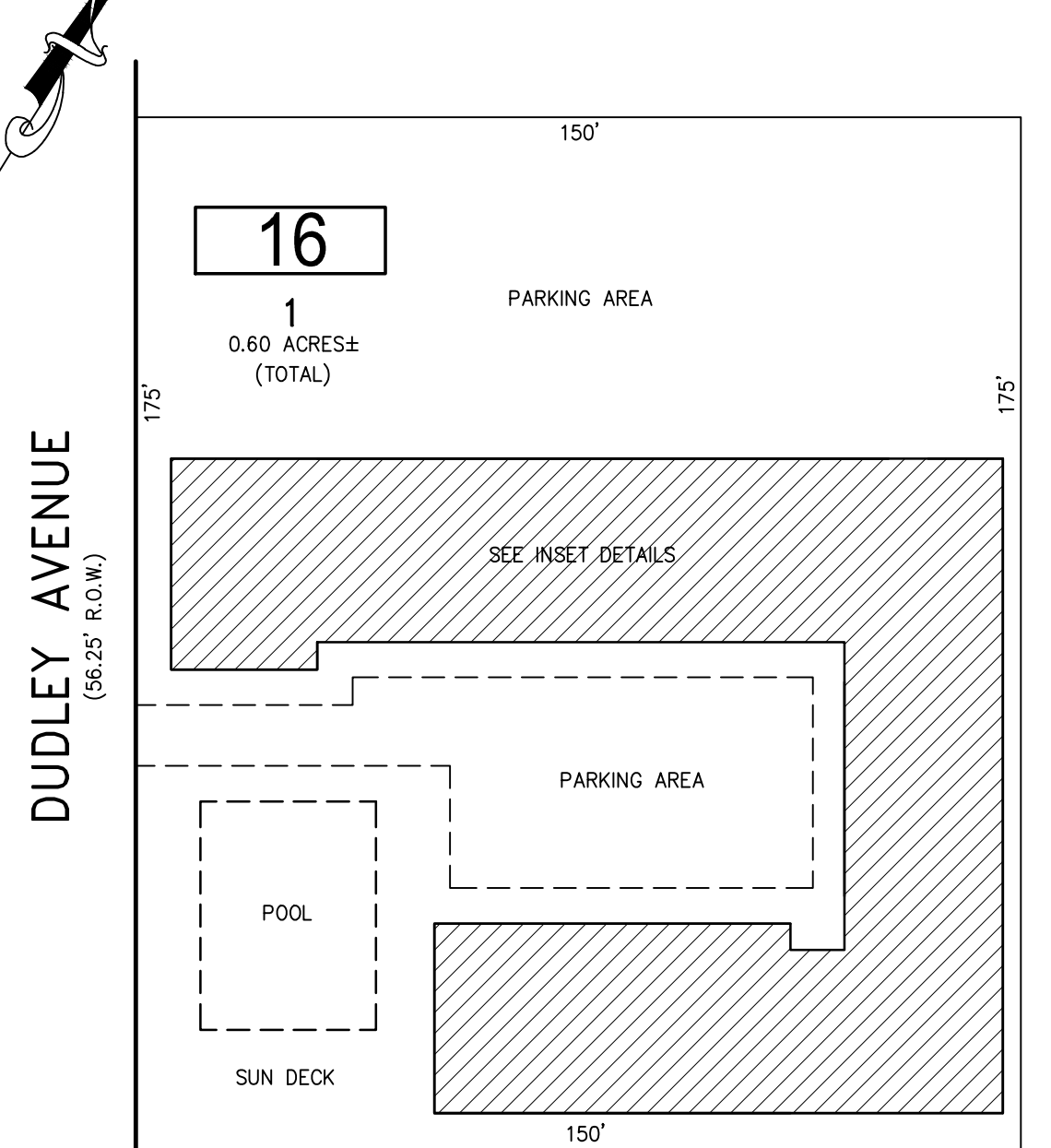


REVISIONS		
DATE	NAME	NO.

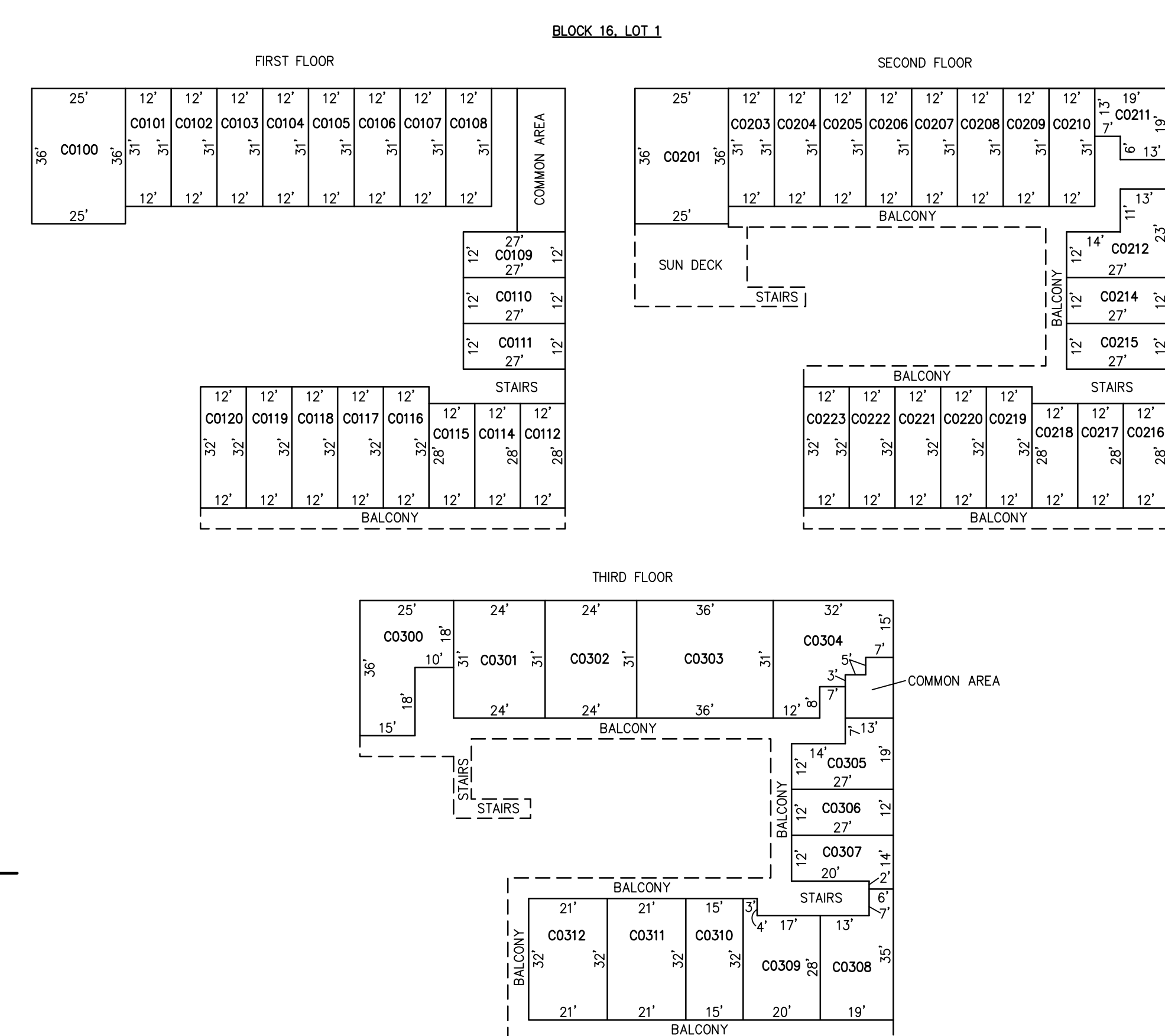
**NOTE:**  
THIS SHEET HAS BEEN DRAWN USING COMPUTER AIDED DRAFTING/DESIGN (CAD/D) AND COORDINATE GEOMETRY (COGO).



**PLAN**  
SCALE: 1"=30'



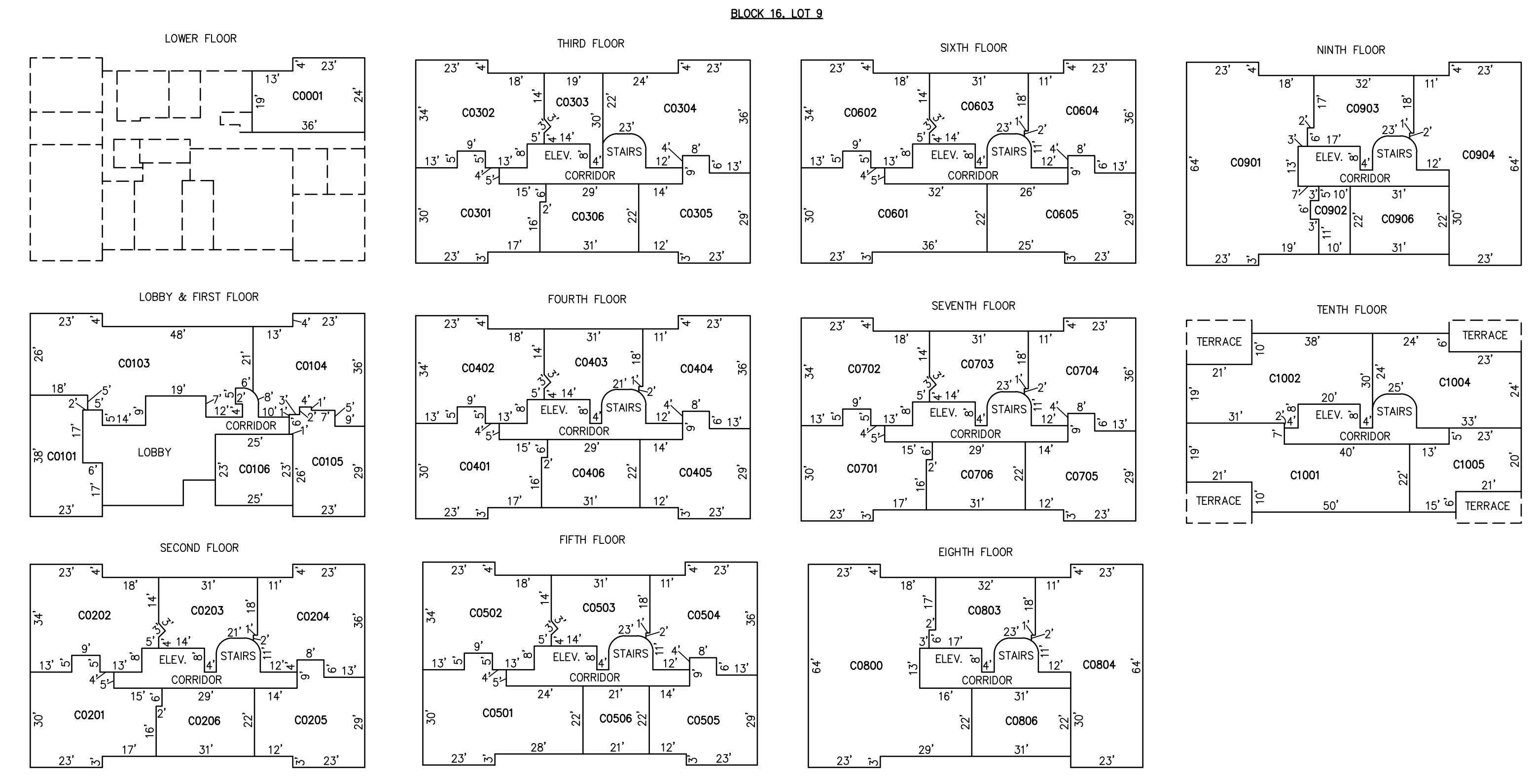
**BOARDWALK PLAN**  
SCALE: 1"=30'



**BLOCK 16, LOT 1**  
**5800 BOARDWALK CONDOMINIUM**  
**111 S DUDLEY AVENUE**

CONDO QUALIFIER	SQUARE FOOTAGE
C0100	598 SF.
C0101	351 SF.
C0102	351 SF.
C0103	351 SF.
C0104	351 SF.
C0105	351 SF.
C0106	351 SF.
C0107	351 SF.
C0108	351 SF.
C0109	293 SF.
C0110	293 SF.
C0111	293 SF.
C0112	293 SF.
C0113	293 SF.
C0114	293 SF.
C0115	293 SF.
C0116	351 SF.
C0117	351 SF.
C0118	351 SF.
C0119	351 SF.
C0120	351 SF.
C0201	592 SF.
C0203	351 SF.
C0204	351 SF.
C0205	351 SF.
C0206	351 SF.
C0207	351 SF.
C0208	351 SF.
C0209	351 SF.
C0210	351 SF.
C0211	263 SF.
C0212	443 SF.
C0214	293 SF.
C0215	293 SF.
C0216	293 SF.
C0217	293 SF.
C0218	293 SF.
C0219	351 SF.
C0220	351 SF.
C0221	351 SF.
C0222	351 SF.
C0223	351 SF.
C0300	643 SF.
C0301	717 SF.
C0302	717 SF.
C0303	1113 SF.
C0304	678 SF.
C0305	389 SF.
C0306	293 SF.
C0307	306 SF.
C0308	546 SF.
C0309	519 SF.
C0310	465 SF.
C0311	602 SF.
C0312	602 SF.

CONDO QUALIFIER	SQUARE FOOTAGE
C0001	803 SF.
C0101	753 SF.
C0103	1056 SF.
C0104	767 SF.
C0105	1057 SF.
C0106	568 SF.
C0201	1127 SF.
C0202	1204 SF.
C0203	676 SF.
C0204	1090 SF.
C0205	954 SF.
C0206	655 SF.
C0301	1127 SF.
C0302	1204 SF.
C0303	437 SF.
C0304	1329 SF.
C0305	954 SF.
C0306	655 SF.
C0401	1204 SF.
C0402	1204 SF.
C0403	676 SF.
C0404	1090 SF.
C0405	954 SF.
C0406	655 SF.
C0501	1324 SF.
C0502	1204 SF.
C0503	676 SF.
C0504	1323 SF.
C0505	729 SF.
C0506	458 SF.
C0601	1492 SF.
C0602	1204 SF.
C0603	676 SF.
C0604	1090 SF.
C0605	1244 SF.
C0701	1127 SF.
C0702	1204 SF.
C0704	1090 SF.
C0705	954 SF.
C0706	655 SF.
C0800	2384 SF.
C0803	693 SF.
C0804	1329 SF.
C0806	693 SF.
C0901	2384 SF.
C0902	237 SF.
C0903	693 SF.
C0904	1784 SF.
C0906	693 SF.
C1001	1504 SF.
C1002	1235 SF.
C1004	1186 SF.
C1005	768 SF.



**BLOCK 16, LOT 9**  
**THE OXFORD CONDOMINIUM**  
**112 S OXFORD AVENUE**

BLOCK 16, LOT 1  
BLOCK 16, LOT 9  
SEE SHEET 3

"THIS TAX MAP SHEET HAS BEEN DIGITALLY REVISED USING COMPUTER-AIDED DRAFTING/DESIGN (CADD) & COORDINATE GEOMETRY (COGO). IT IS BASED ON THE ORIGINAL DIGITALLY DRAWN TAX MAP PLATE BEARING THE OFFICIAL NEW JERSEY DIVISION TAXATION APPROVAL STAMP WITH APPROVAL DATE JULY, 20, 2016. SERIAL NUMBER 1070 AND SIGNATURE OF JUDY P. MILLER, C.T.A. CHIEF PROPERTY ADMINISTRATION AND SHELLY REILLY, C.T.A. PRINCIPAL FIELD REPRESENTATIVE. THE ORIGINAL DIGITALLY DRAWN TAX MAP PLATE WITH THE OFFICIAL APPROVAL STAMP IS ON FILE WITH REMINGTON & VERNICK ENGINEERS."

**TAX MAP**  
**CITY OF VENTNOR**  
ATLANTIC COUNTY NEW JERSEY  
SCALE: NOTED DATE: 2-19-2015  
**CHARLES E. ADAMSON NJ PROFESSIONAL LAND SURVEYOR LIC. NO. 42627**  
**REMINGTON, VERNICK & WALBERG ENGINEERS**  
845 N. MAIN STREET, PLEASANTVILLE, NJ 08232  
(609) 645-700, FAX (609) 645-7076  
WWW.RVW.COM  
TO SHOW CONDITIONS AS OF 3-01-2022