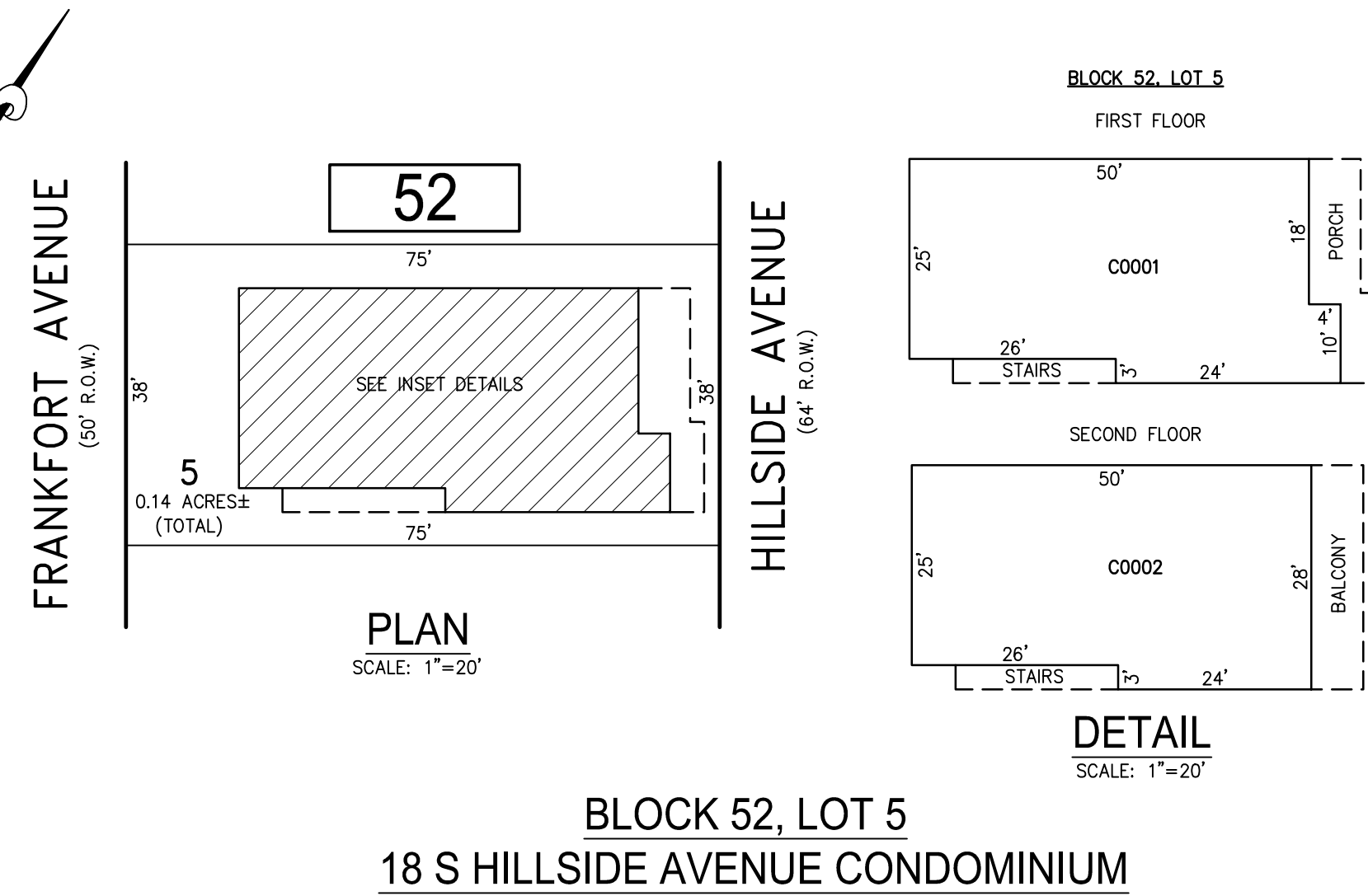
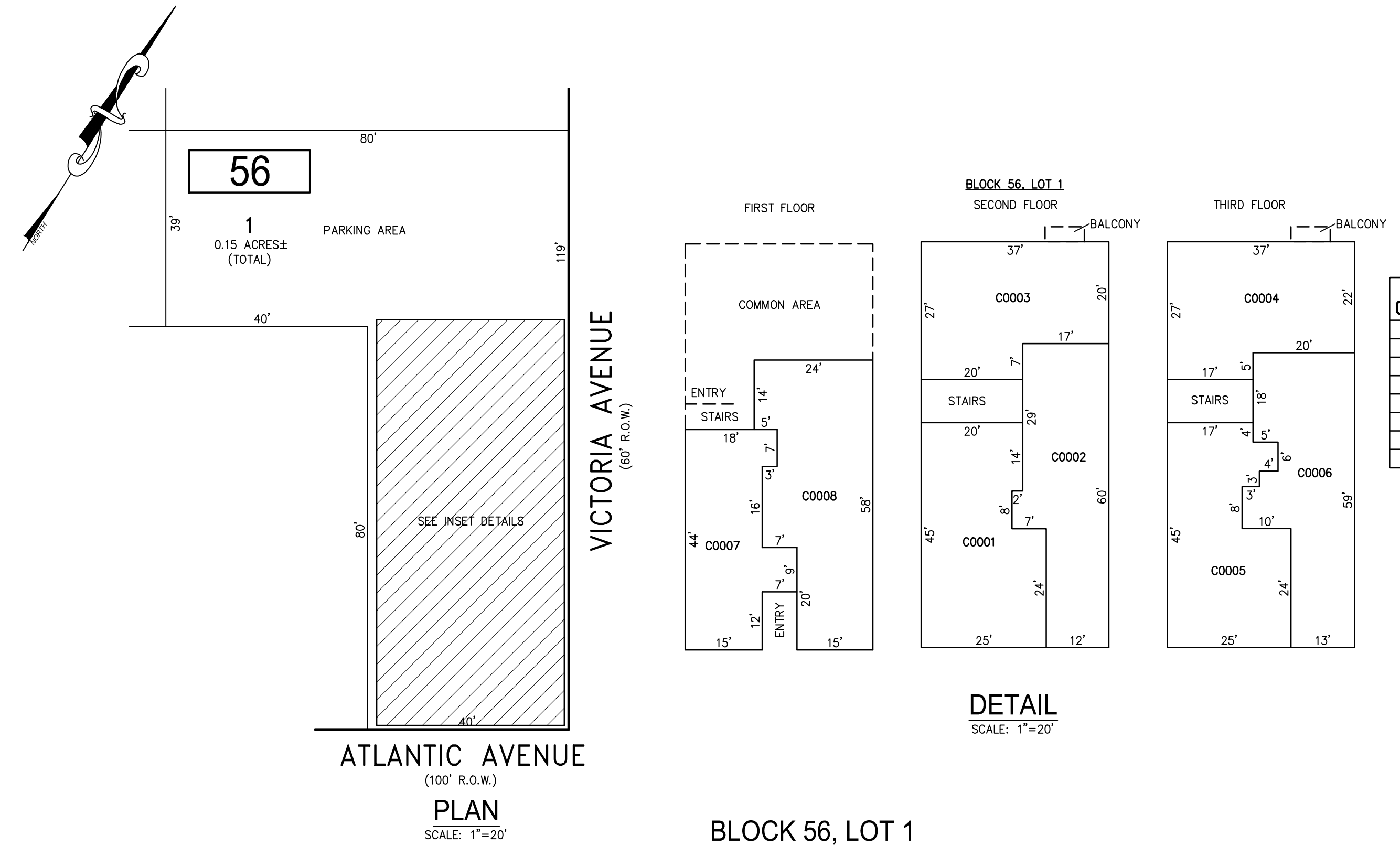


| REVISIONS |                    |       |
|-----------|--------------------|-------|
| DATE      | NAME               | NO.   |
| 3-1-2017  | CHARLES E. ADAMSON | 42627 |
|           |                    |       |
|           |                    |       |
|           |                    |       |
|           |                    |       |
|           |                    |       |
|           |                    |       |
|           |                    |       |
|           |                    |       |
|           |                    |       |

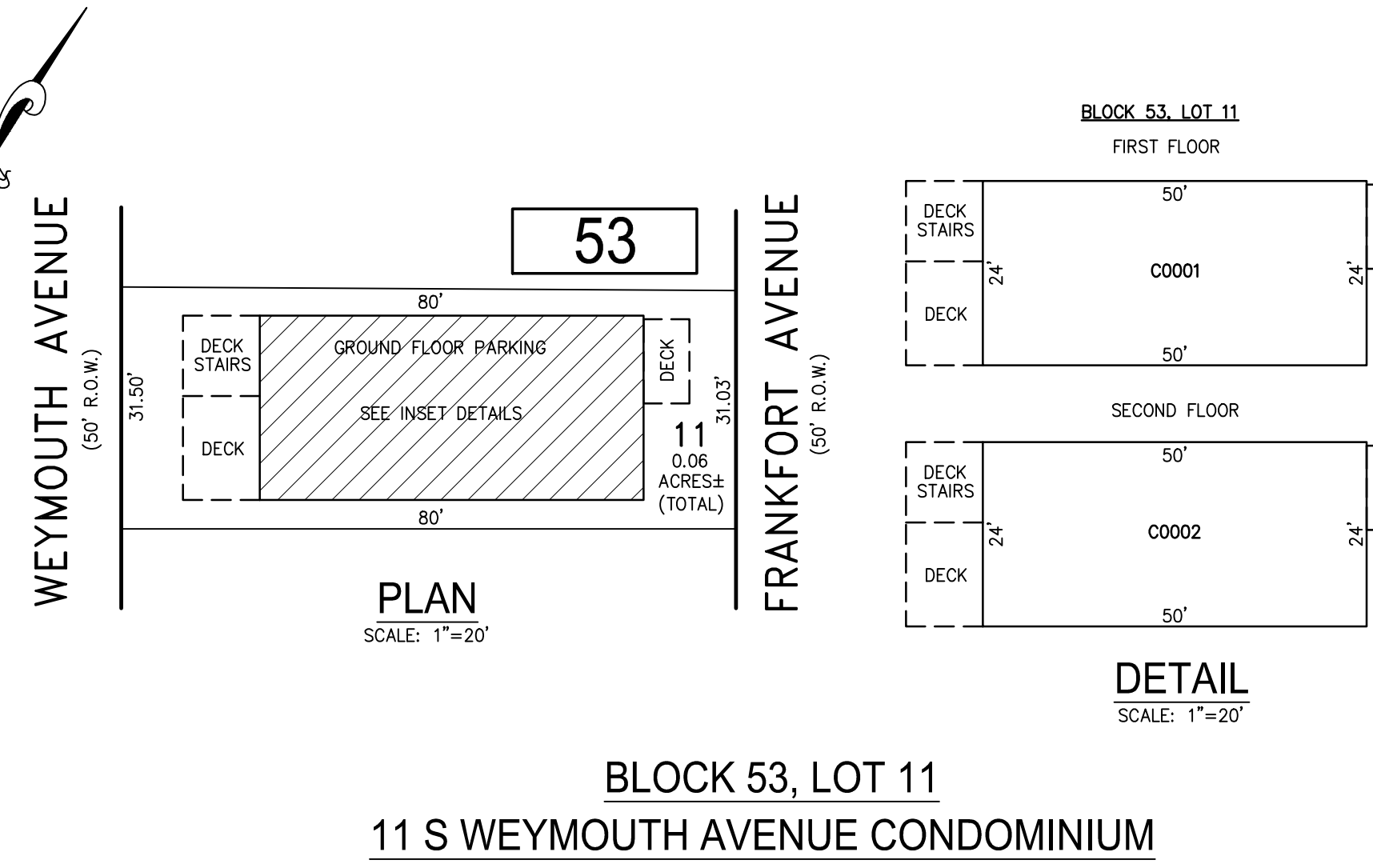
**NOTE:**  
THIS SHEET HAS BEEN DRAWN USING COMPUTER AIDED DRAFTING/DESIGN (CAD/D) AND COORDINATE GEOMETRY (COGO).



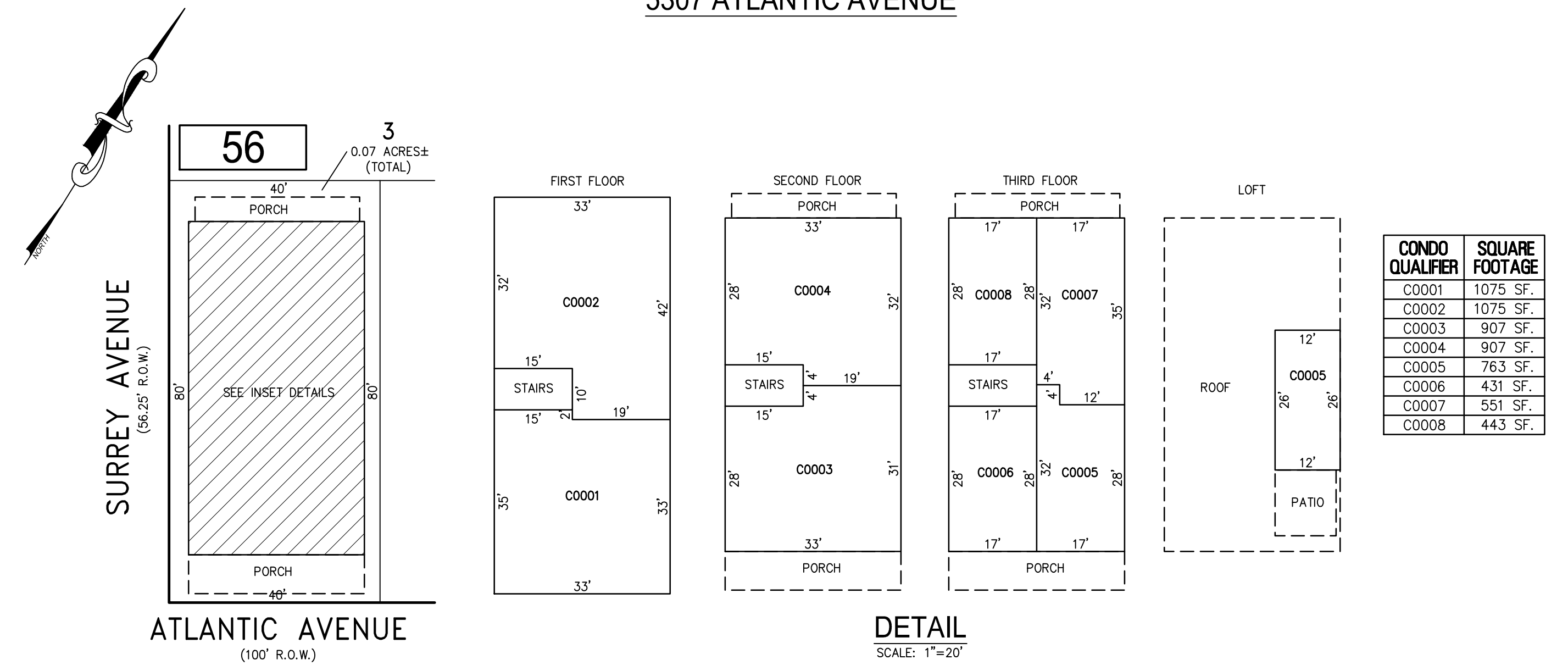
**BLOCK 52, LOT 5**  
**18 S HILLSIDE AVENUE CONDOMINIUM**



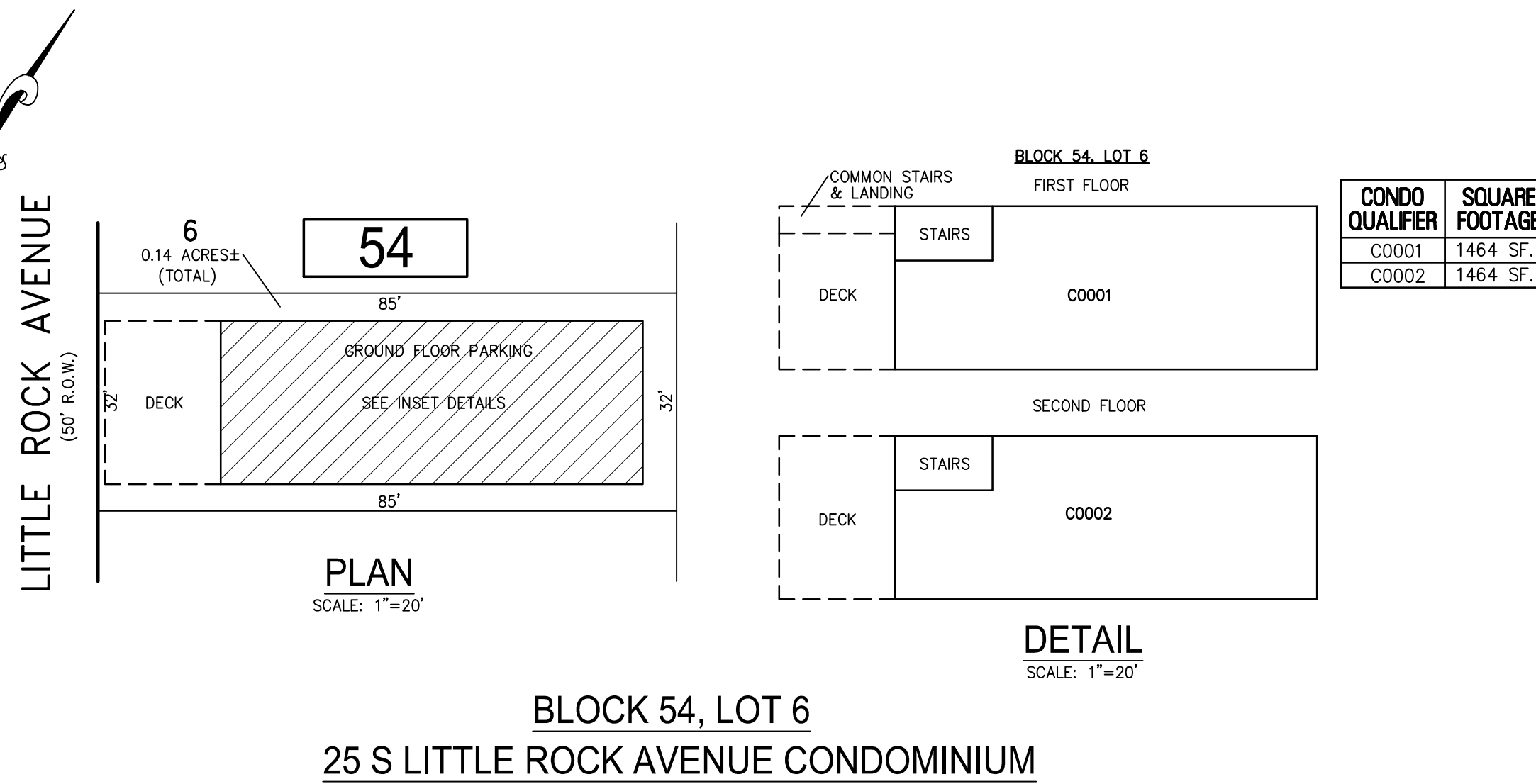
**BLOCK 56, LOT 1**  
**VICTORIA VIEWS CONDOMINIUM**  
**5307 ATLANTIC AVENUE**



**BLOCK 53, LOT 11**  
**11 S WEYMOUTH AVENUE CONDOMINIUM**



**BLOCK 56, LOT 3**  
**SURREY BEACH CONDOMINIUM**  
**25 S SURREY AVENUE**



**BLOCK 54, LOT 6**  
**25 S LITTLE ROCK AVENUE CONDOMINIUM**

- BLOCK 52, LOT 5
- BLOCK 53, LOT 11
- BLOCK 56, LOT 1
- BLOCK 56, LOT 3
- BLOCK 56, LOT 6
- SEE SHEET 10

"THIS TAX MAP SHEET HAS BEEN DIGITALLY REVISED USING COMPUTER-AIDED DRAFTING/DESIGN (CADD) & COORDINATE GEOMETRY (COGO). IT IS BASED ON THE ORIGINAL DIGITALLY DRAWN TAX MAP PLATE BEARING THE OFFICIAL NEW JERSEY DIVISION TAXATION APPROVAL STAMP WITH APPROVAL DATE JULY, 20, 2016. SERIAL NUMBER 1070 AND SIGNATURE OF JUDY P. MILLER, CTA, CHIEF PROPERTY ADMINISTRATION AND SHELLY REILLY, CTA, PRINCIPAL FIELD REPRESENTATIVE. THE ORIGINAL DIGITALLY DRAWN TAX MAP PLATE WITH THE OFFICIAL APPROVAL STAMP IS ON FILE WITH REMINGTON & VERNICK ENGINEERS."

**TAX MAP**  
**CITY OF VENTNOR**  
ATLANTIC COUNTY NEW JERSEY  
SCALE: NOTED DATE: 2-19-2015

**CHARLES E. ADAMSON** NJ PROFESSIONAL LAND SURVEYOR LIC. NO. 42627  
24 GA 28048700

**RV & W** **REMINGTON, VERNICK & WALBERG ENGINEERS**  
845 N. MAIN STREET, PLEASANTVILLE, NJ 08232  
(609) 645-7000, FAX (609) 645-7076  
WEB SITE ADDRESS: WWW.RVE.COM  
TO SHOW CONDITIONS AS OF 3-01-2022