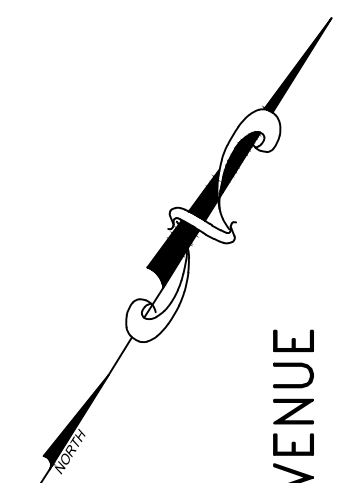
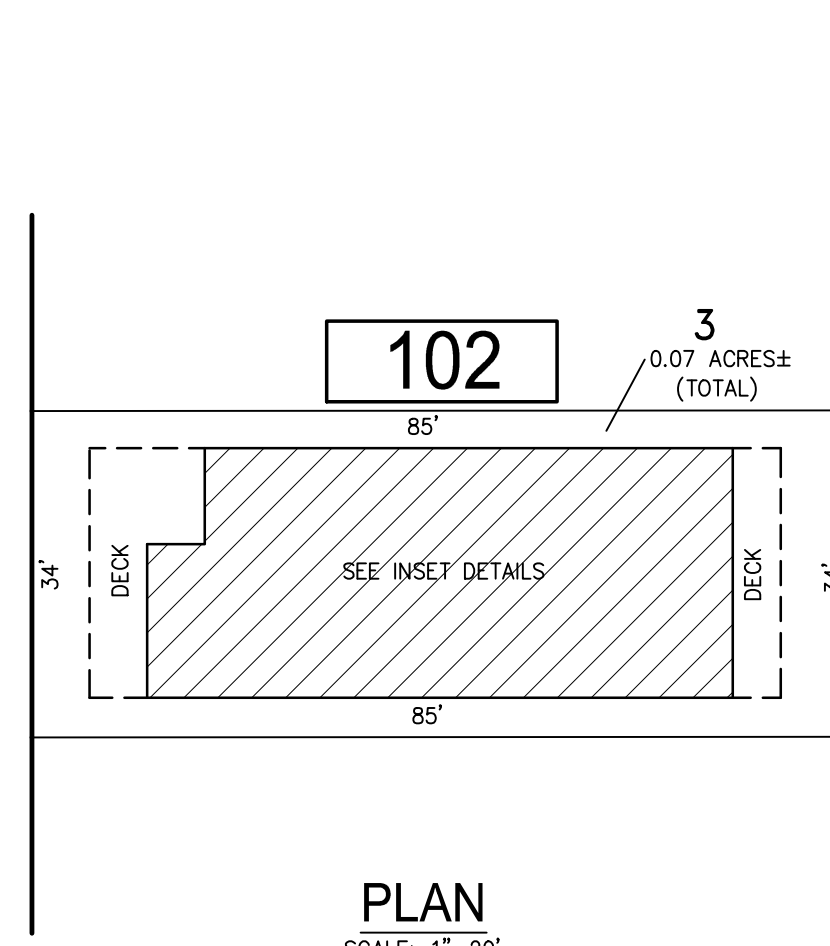


REVISIONS		
DATE	NAME	NO.
03-01-2022	CHARLES E. ADAMSON	42627

NOTE:
THIS SHEET HAS BEEN DRAWN USING COMPUTER AIDED DRAFTING/DESIGN (CAD/D) AND COORDINATE GEOMETRY (COGO).

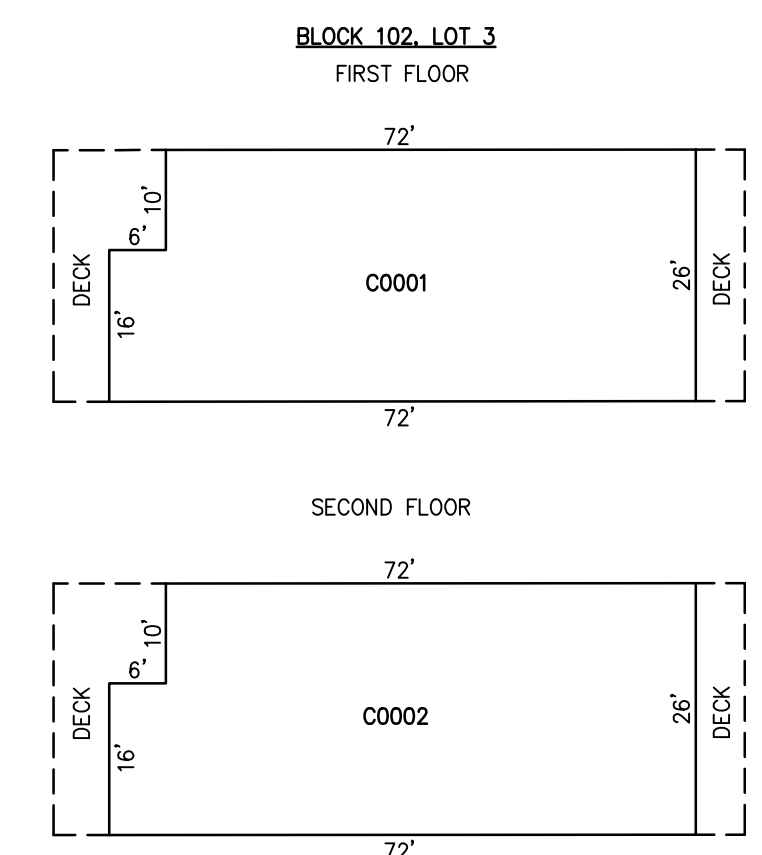


VICTORIA AVENUE
(50' R.O.W.)



PLAN
SCALE: 1"=20'

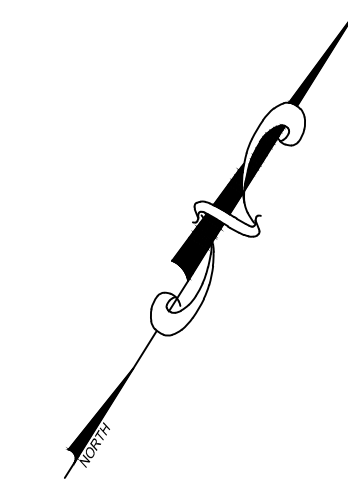
LITTLE ROCK AVENUE
(50' R.O.W.)



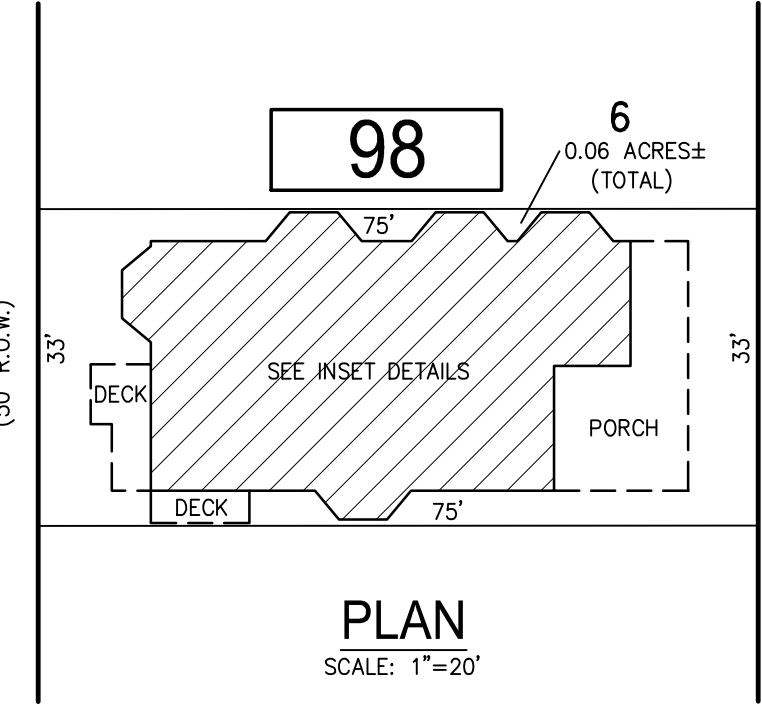
DETAILS
SCALE: 1"=20'

CONDO QUALIFIER	SQUARE FOOTAGE
C0001	1,364 SF.
C0002	1,364 SF.

BLOCK 102, LOT 3
NORTH VICTORIA AVENUE CONDOMINIUM
1 NORTH VICTORIA AVENUE

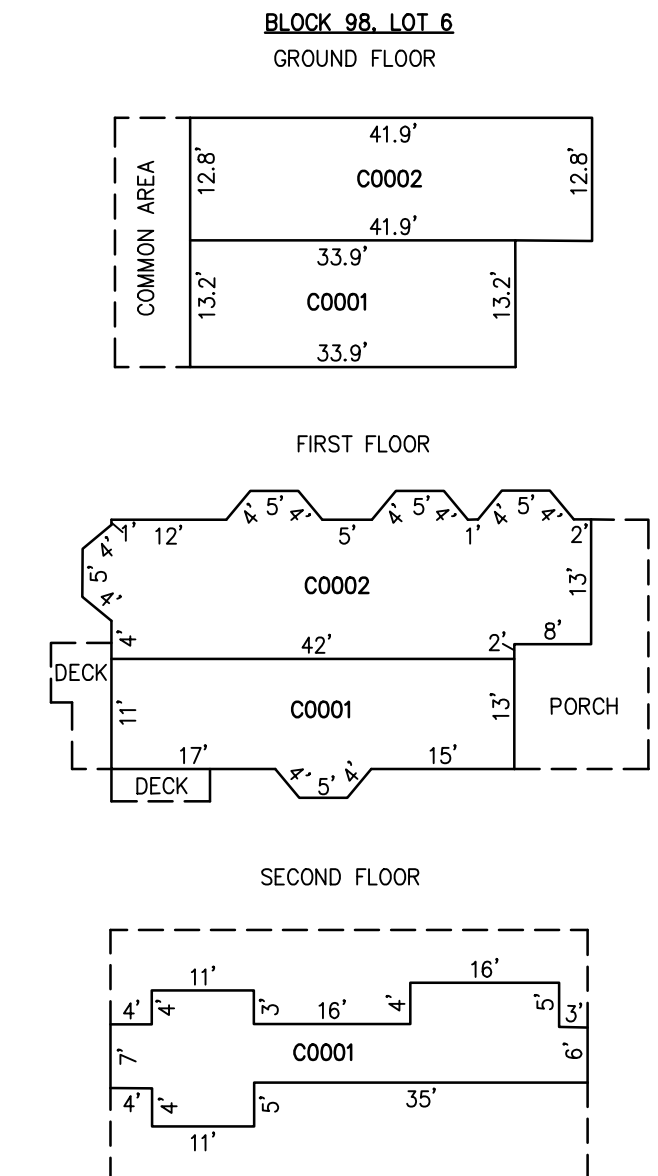


FRANKFORT AVENUE
(50' R.O.W.)



PLAN
SCALE: 1"=20'

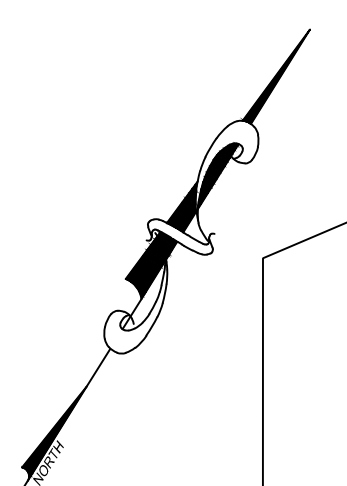
HILLSIDE AVENUE
(50' R.O.W.)



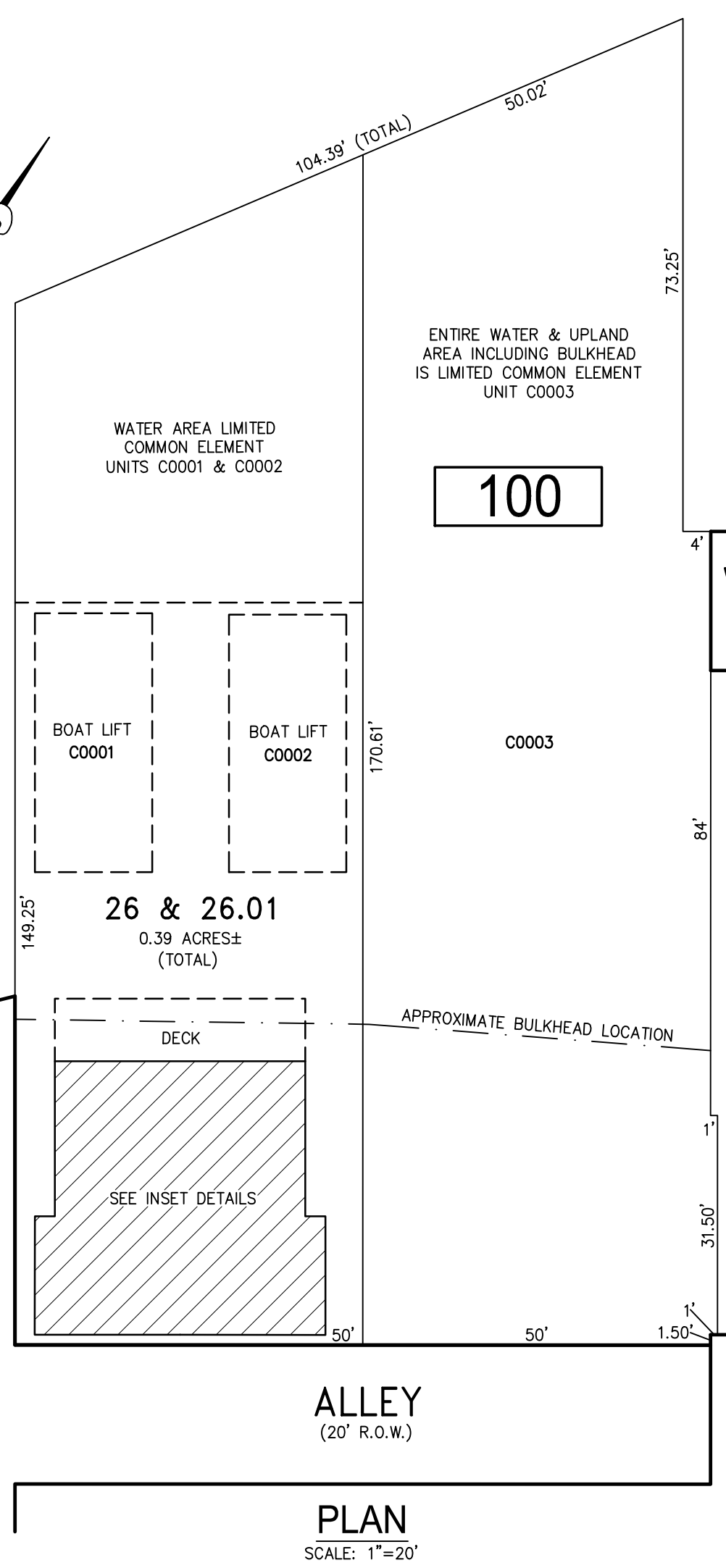
DETAILS
SCALE: 1"=20'

CONDO QUALIFIER	SQUARE FOOTAGE
C0001	1,184 SF.
C0002	638 SF.

BLOCK 98, LOT 6
NORTH HILLSIDE AVENUE CONDOMINIUM
8 NORTH HILLSIDE AVENUE



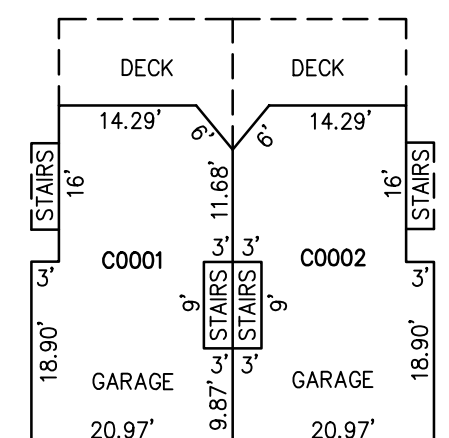
LITTLE ROCK AVENUE
(50' R.O.W.)



PLAN
SCALE: 1"=20'

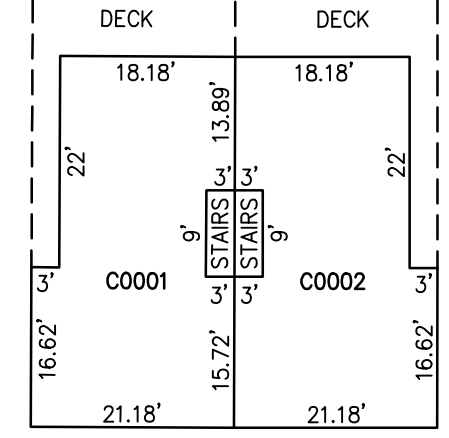
WINCHESTER AVENUE

BLOCK 100, LOTS 26 & 26.01
FIRST FLOOR

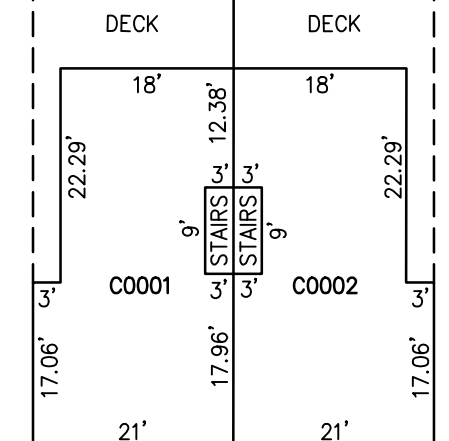


CONDO QUALIFIER	SQUARE FOOTAGE
C0001	2,120 SF.
C0002	2,120 SF.
C0003	8,799 SF.

SECOND FLOOR

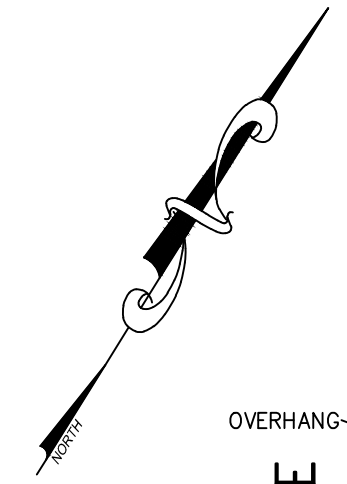


THIRD FLOOR

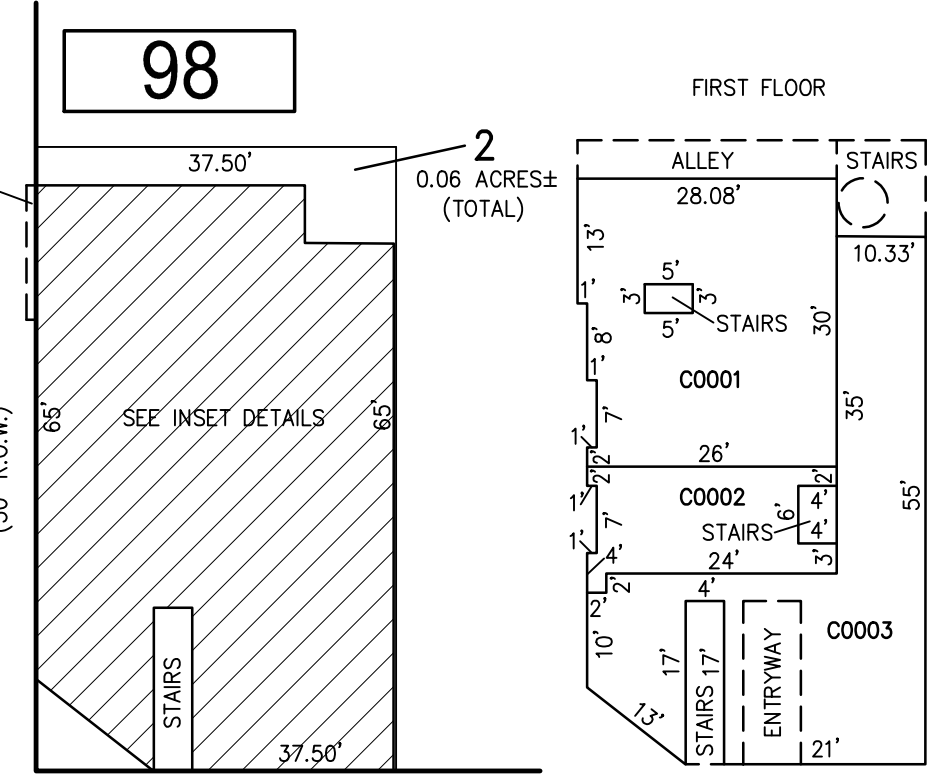


DETAILS
SCALE: 1"=20'

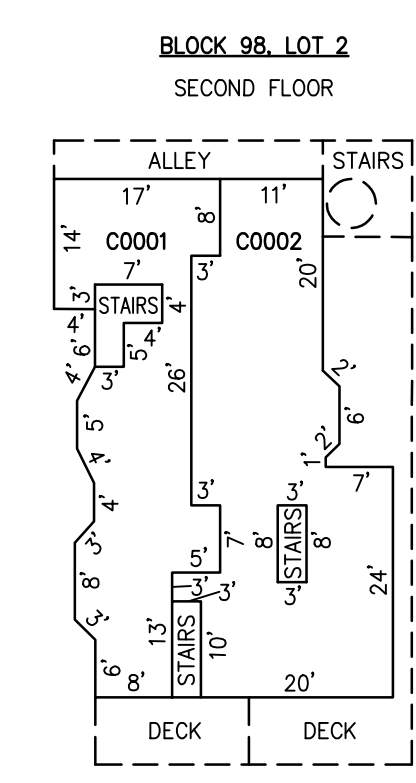
BLOCK 100, LOT 26 & 26.01
NORTH LITTLE ROCK AVENUE CONDOMINIUM
105 NORTH LITTLE ROCK AVENUE



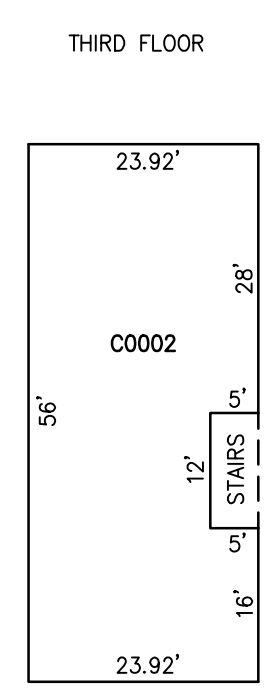
FRANKFORT AVENUE
(50' R.O.W.)



PLAN
SCALE: 1"=20'



DETAILS
SCALE: 1"=20'



CONDO QUALIFIER	SQUARE FOOTAGE
C0001	1,565 SF.
C0002	2,083 SF.
C0003	1,377 SF.

BLOCK 98, LOT 2
5123 VENTNOR AVENUE CONDOMINIUM

BLOCK 98, LOT 2
BLOCK 98, LOT 6
BLOCK 100, LOT 26 & 26.01
BLOCK 102, LOT 3
SEE SHEET 18

"THIS TAX MAP SHEET HAS BEEN DIGITALLY REVISED USING COMPUTER-AIDED DRAFTING/DESIGN (CADD) & COORDINATE GEOMETRY (COGO). IT IS BASED ON THE ORIGINAL DIGITALLY DRAWN TAX MAP PLATE BEARING THE OFFICIAL NEW JERSEY DIVISION TAXATION APPROVAL STAMP WITH APPROVAL DATE JULY, 20, 2016. SERIAL NUMBER 1070 AND SIGNATURE OF JUDY P. MILLER, C.T.A. CHIEF PROPERTY ADMINISTRATION AND SHELLY REILLY, C.T.A. PRINCIPAL FIELD REPRESENTATIVE. THE ORIGINAL DIGITALLY DRAWN TAX MAP PLATE WITH THE OFFICIAL APPROVAL STAMP IS ON FILE WITH REMINGTON & VERNICK ENGINEERS."

TAX MAP
CITY OF VENTNOR
ATLANTIC COUNTY NEW JERSEY
SCALE: NOTED DATE: 2-19-2015

CHARLES E. ADAMSON NJ PROFESSIONAL LAND SURVEYOR LIC. NO. 42627

RV & W REMINGTON, VERNICK & WALBERG ENGINEERS
845 N. MAIN STREET, PLEASANTVILLE, NJ 08232
(609) 645-700, FAX (609) 645-7076
WEB SITE ADDRESS: WWW.RVW.COM
TO SHOW CONDITIONS AS OF 3-01-2022