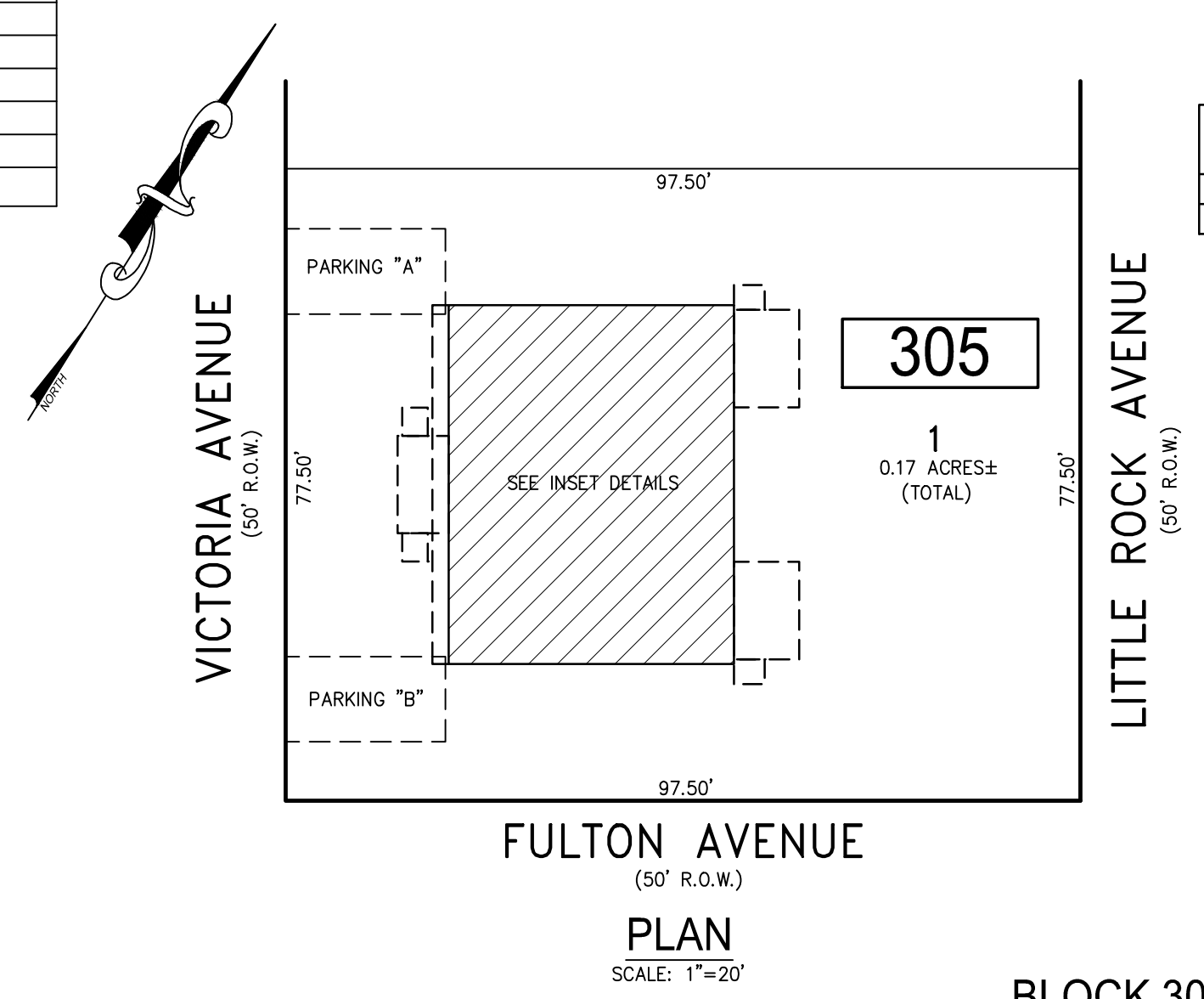
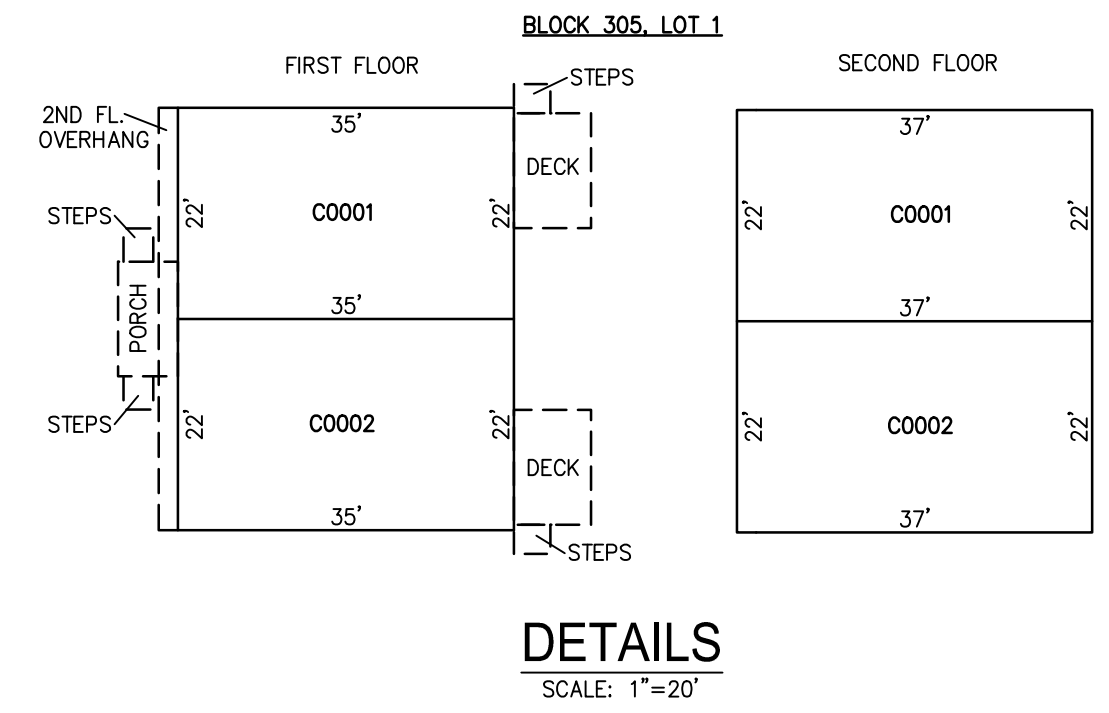


REVISIONS		
DATE	NAME	NO.

NOTE:
THIS SHEET HAS BEEN DRAWN USING COMPUTER AIDED DRAFTING/DESIGN (CADD) AND COORDINATE GEOMETRY (COGO).

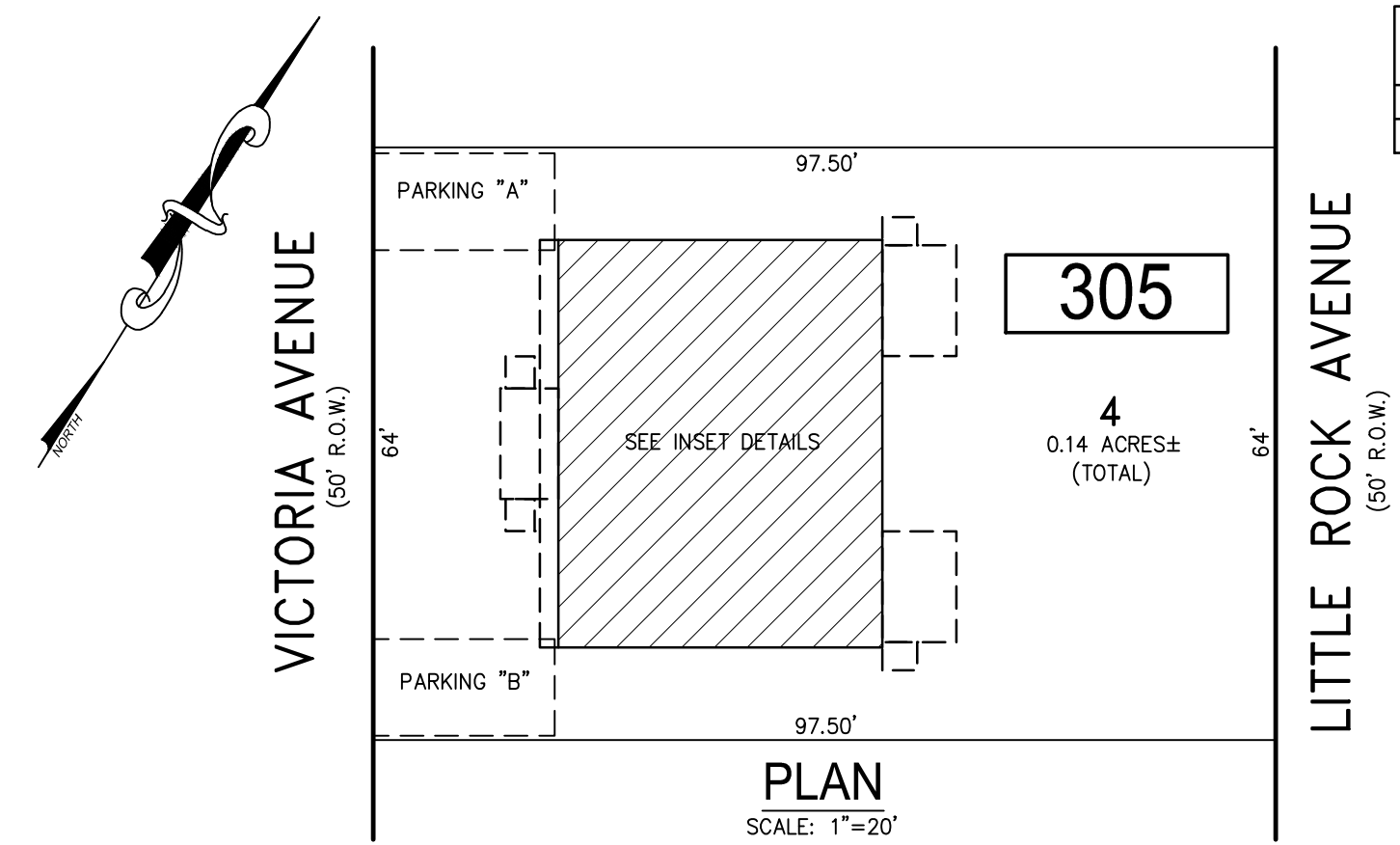


CONDO QUALIFIER	SQUARE FOOTAGE
C0001	1600 SF.
C0002	1600 SF.

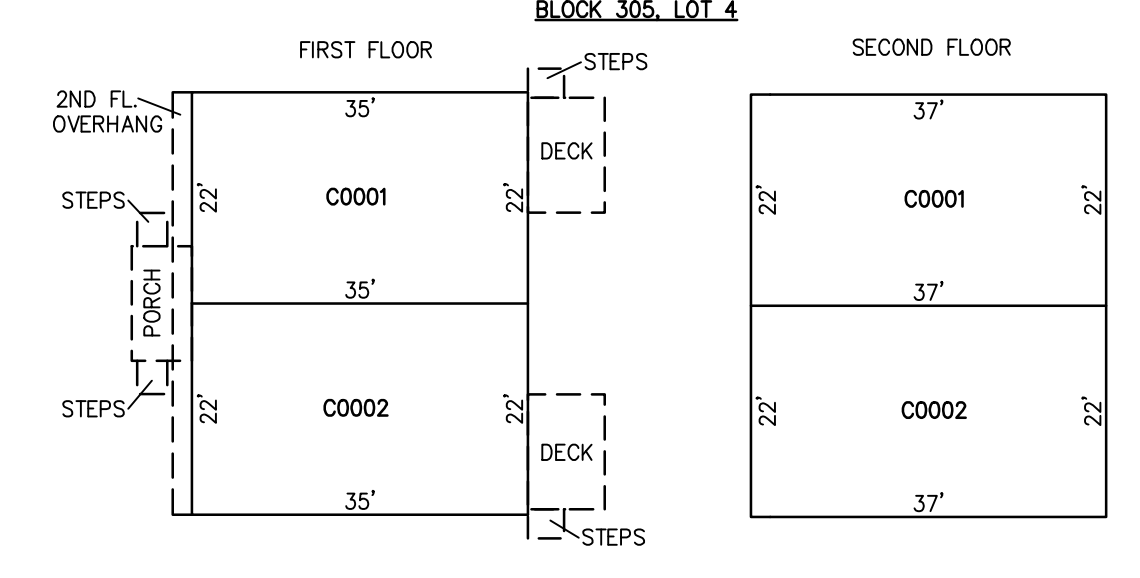


PLAN
SCALE: 1"=20'

BLOCK 305, LOT 1
THE VICTORIA XV CONDOMINIUM
601 N. VICTORIA AVENUE



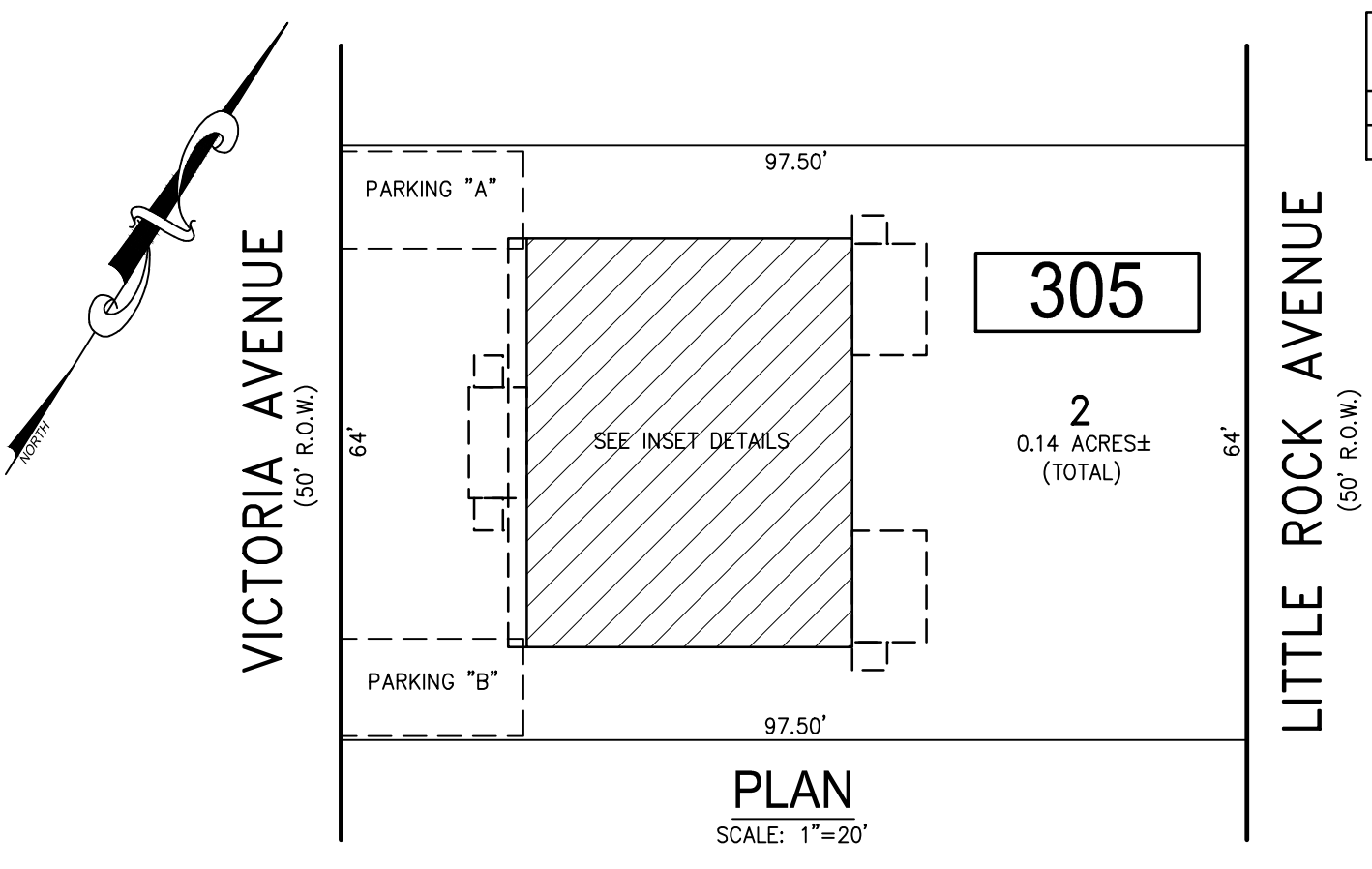
CONDO QUALIFIER	SQUARE FOOTAGE
C0001	1600 SF.
C0002	1600 SF.



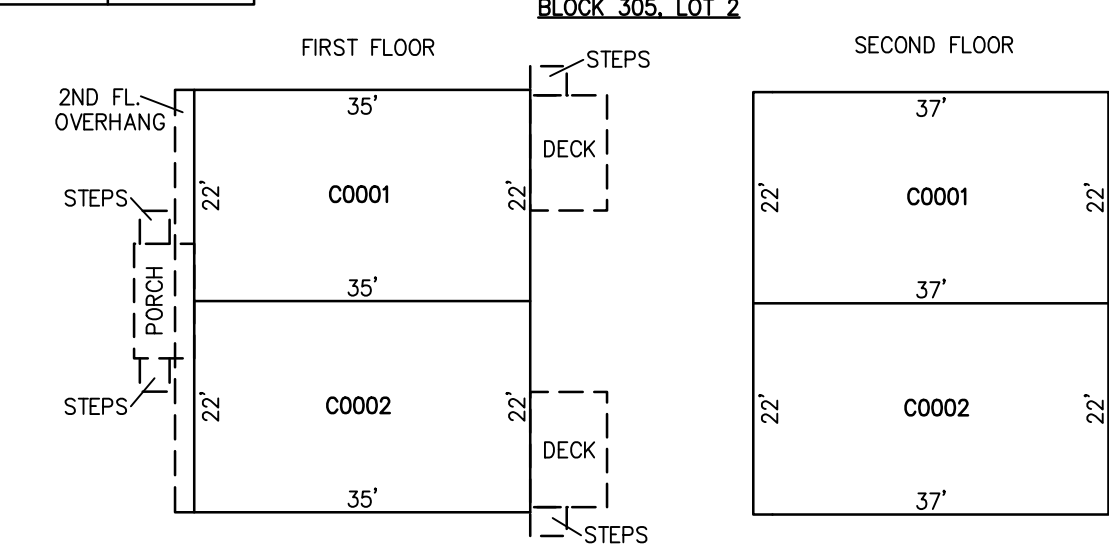
PLAN
SCALE: 1"=20'

DETAILS
SCALE: 1"=20'

BLOCK 305, LOT 4
THE VICTORIA XVIII CONDOMINIUM
607 N. VICTORIA AVENUE



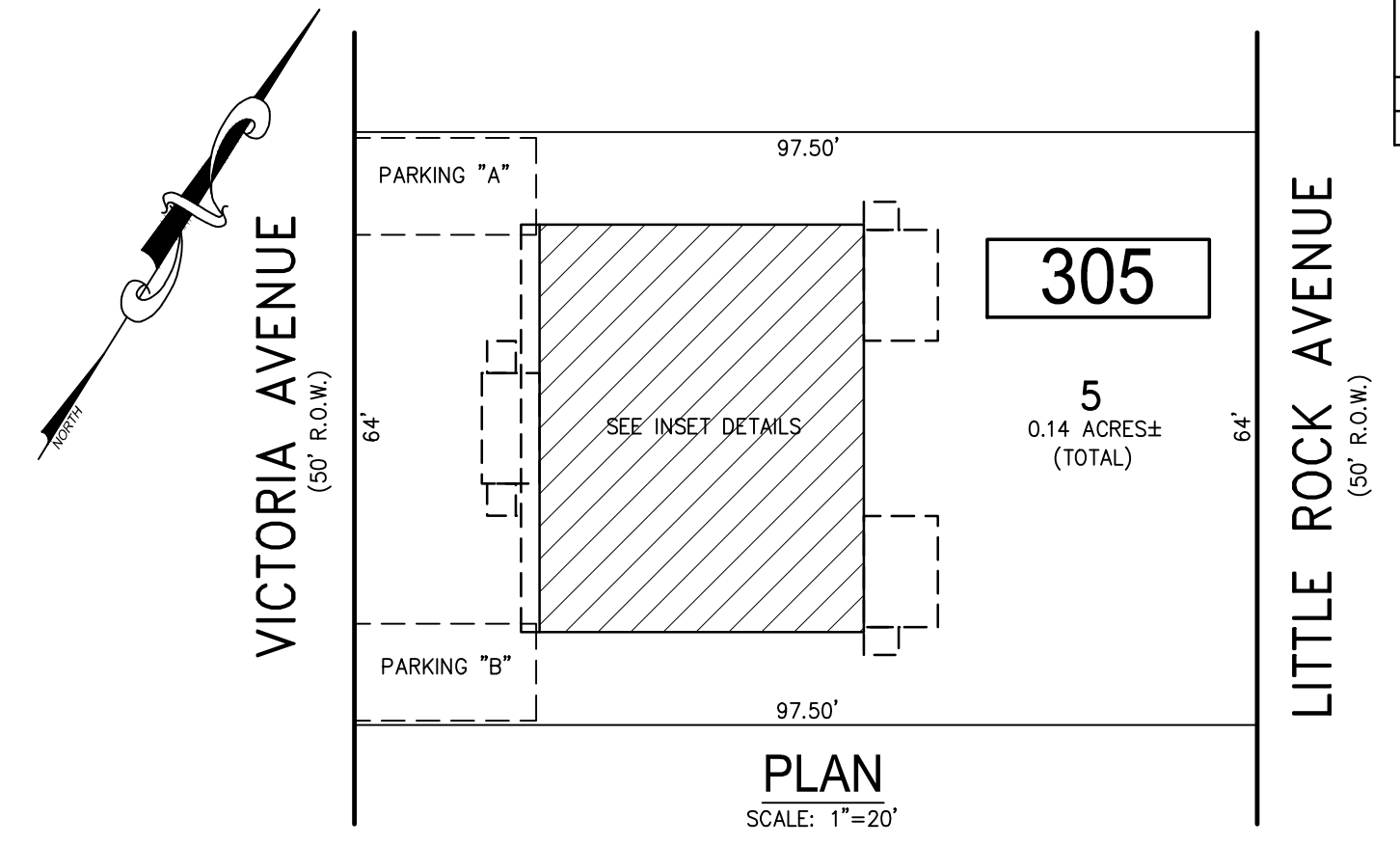
CONDO QUALIFIER	SQUARE FOOTAGE
C0001	1600 SF.
C0002	1600 SF.



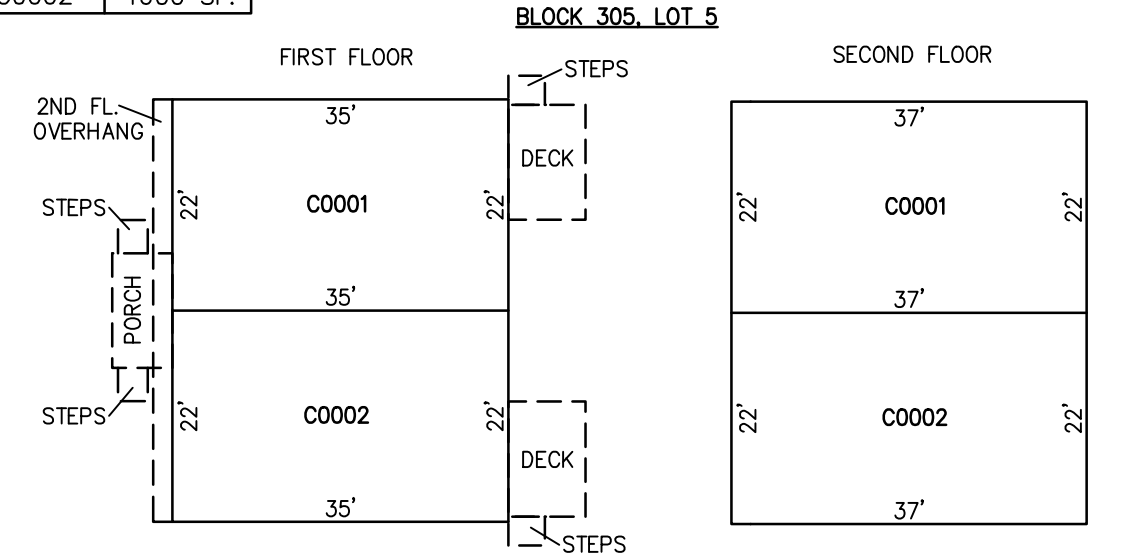
PLAN
SCALE: 1"=20'

DETAILS
SCALE: 1"=20'

BLOCK 305, LOT 2
THE VICTORIA XVI CONDOMINIUM
603 N. VICTORIA AVENUE



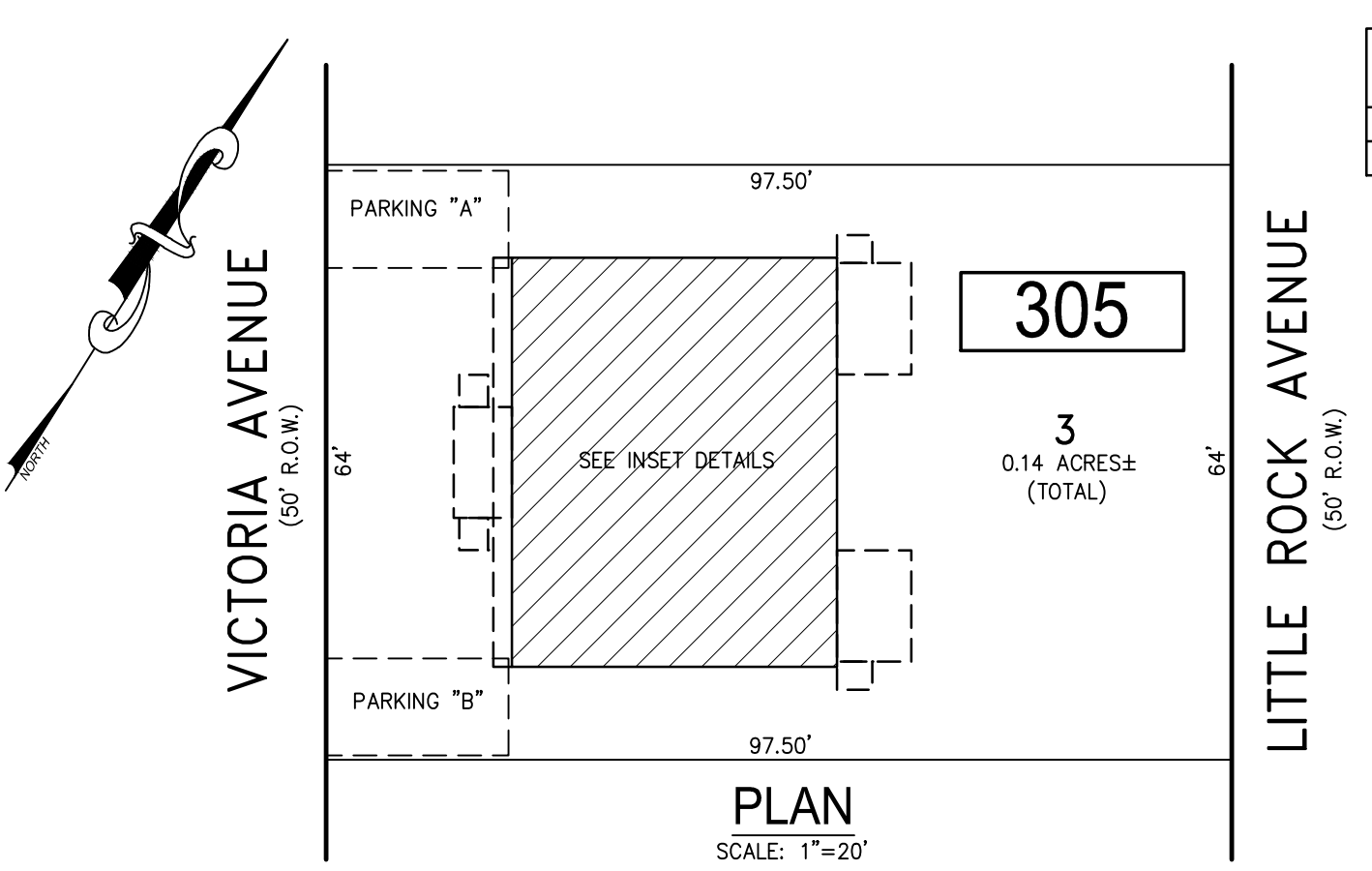
CONDO QUALIFIER	SQUARE FOOTAGE
C0001	1600 SF.
C0002	1600 SF.



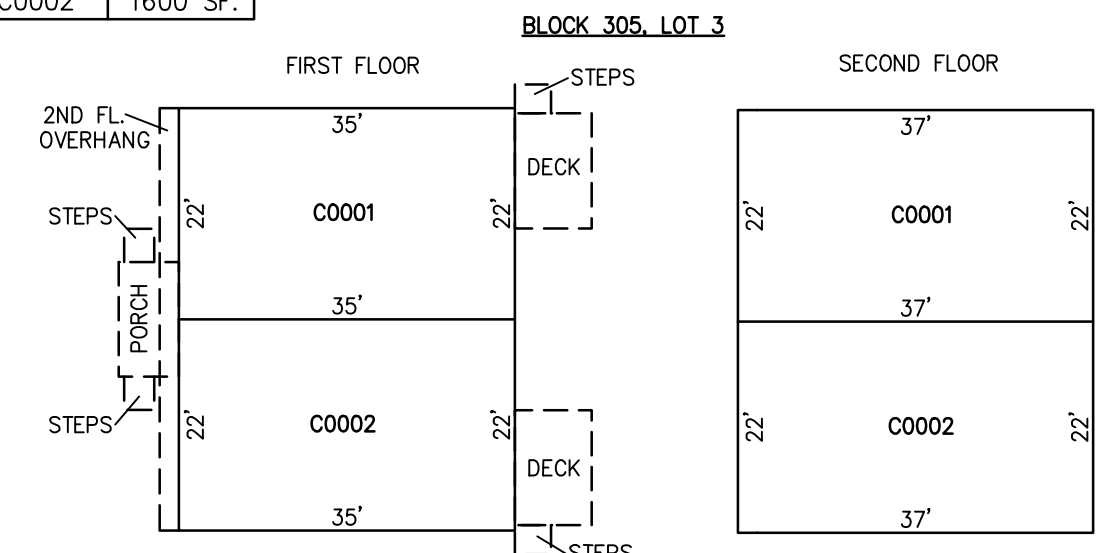
PLAN
SCALE: 1"=20'

DETAILS
SCALE: 1"=20'

BLOCK 305, LOT 5
THE VICTORIA XIX CONDOMINIUM
609 N. VICTORIA AVENUE



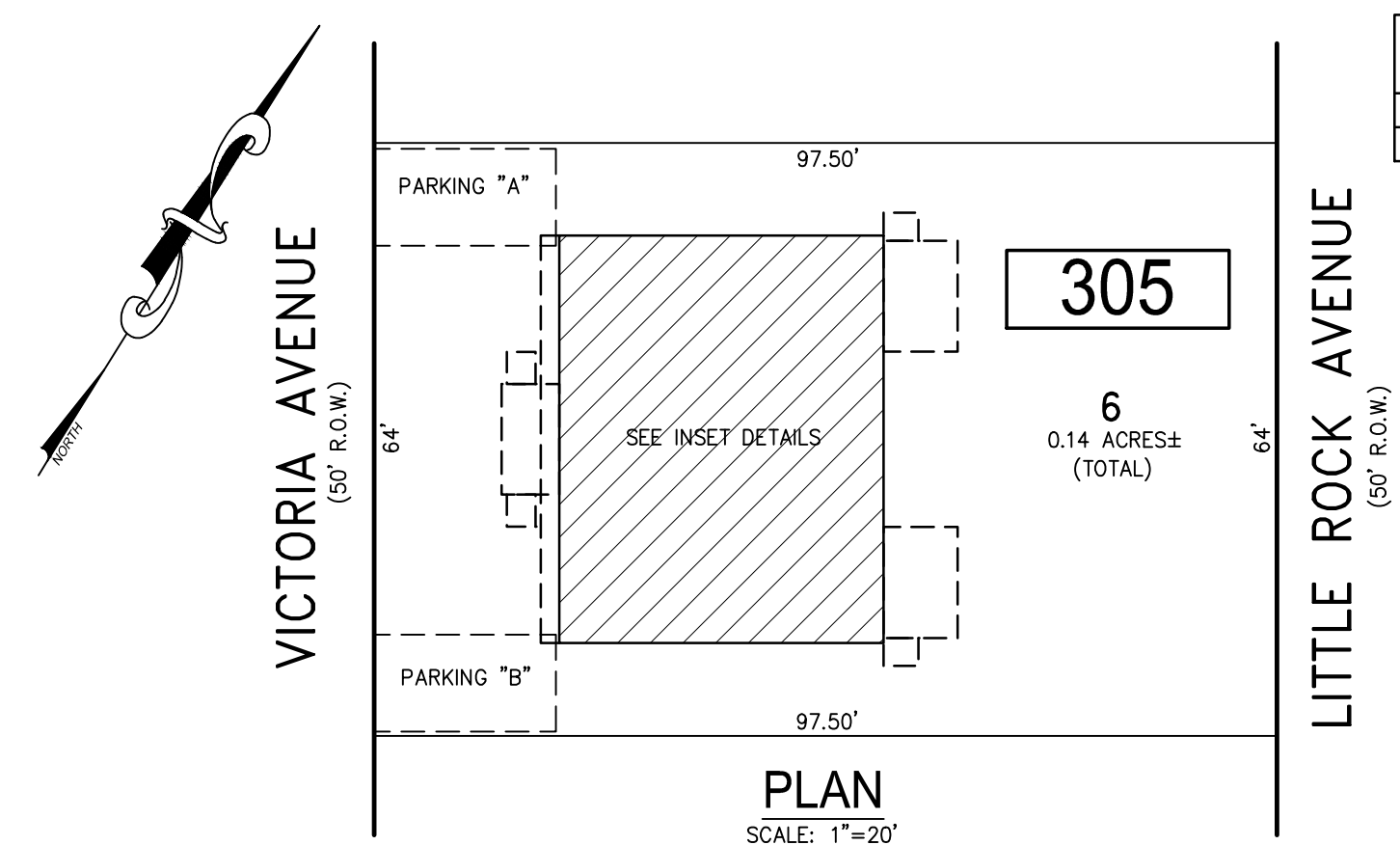
CONDO QUALIFIER	SQUARE FOOTAGE
C0001	1600 SF.
C0002	1600 SF.



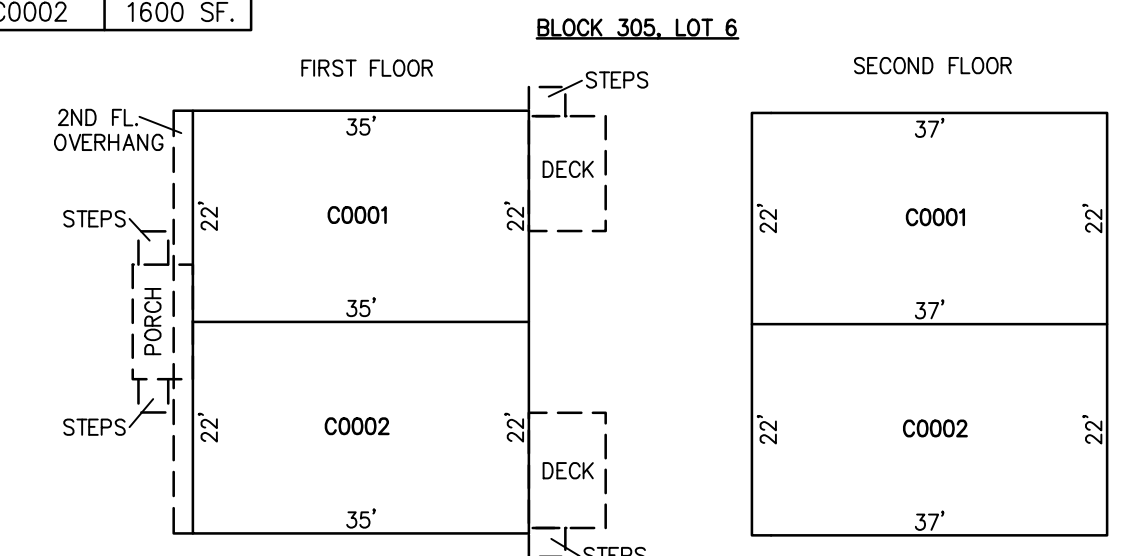
PLAN
SCALE: 1"=20'

DETAILS
SCALE: 1"=20'

BLOCK 305, LOT 3
THE VICTORIA XVII CONDOMINIUM
605 N. VICTORIA AVENUE



CONDO QUALIFIER	SQUARE FOOTAGE
C0001	1600 SF.
C0002	1600 SF.



PLAN
SCALE: 1"=20'

DETAILS
SCALE: 1"=20'

BLOCK 305, LOT 6
THE VICTORIA XX CONDOMINIUM
611 N. VICTORIA AVENUE

- BLOCK 305, LOT 1
- BLOCK 305, LOT 2
- BLOCK 305, LOT 3
- BLOCK 305, LOT 4
- BLOCK 305, LOT 5
- BLOCK 305, LOT 6
- SEE SHEET 50

"THIS TAX MAP SHEET HAS BEEN DIGITALLY REVISED USING COMPUTER-AIDED DRAFTING/DESIGN (CADD) & COORDINATE GEOMETRY (COGO). IT IS BASED ON THE ORIGINAL DIGITALLY DRAWN TAX MAP PLATE BEARING THE OFFICIAL NEW JERSEY DIVISION TAXATION APPROVAL STAMP WITH APPROVAL DATE JULY, 20, 2016. SERIAL NUMBER 1070 AND SIGNATURE OF JUDY P. MILLER, CTA, CHIEF PROPERTY ADMINISTRATION AND SHELLY REILLY, CTA, PRINCIPAL FIELD REPRESENTATIVE. THE ORIGINAL DIGITALLY DRAWN TAX MAP PLATE WITH THE OFFICIAL APPROVAL STAMP IS ON FILE WITH REMINGTON & VERNICK ENGINEERS."

TAX MAP
CITY OF VENTNOR
ATLANTIC COUNTY NEW JERSEY
SCALE: NOTED DATE: 2-19-2015

CHARLES E. ADAMSON NJ PROFESSIONAL LAND SURVEYOR LIC. NO. 42627

RV & W **REMINGTON, VERNICK & WALBERG ENGINEERS**
845 N. MAIN STREET, PLEASANTVILLE, NJ 08232
(609) 645-7000, FAX (609) 645-7076
WEB SITE ADDRESS: WWW.RVE.COM
TO SHOW CONDITIONS AS OF 3-01-2022