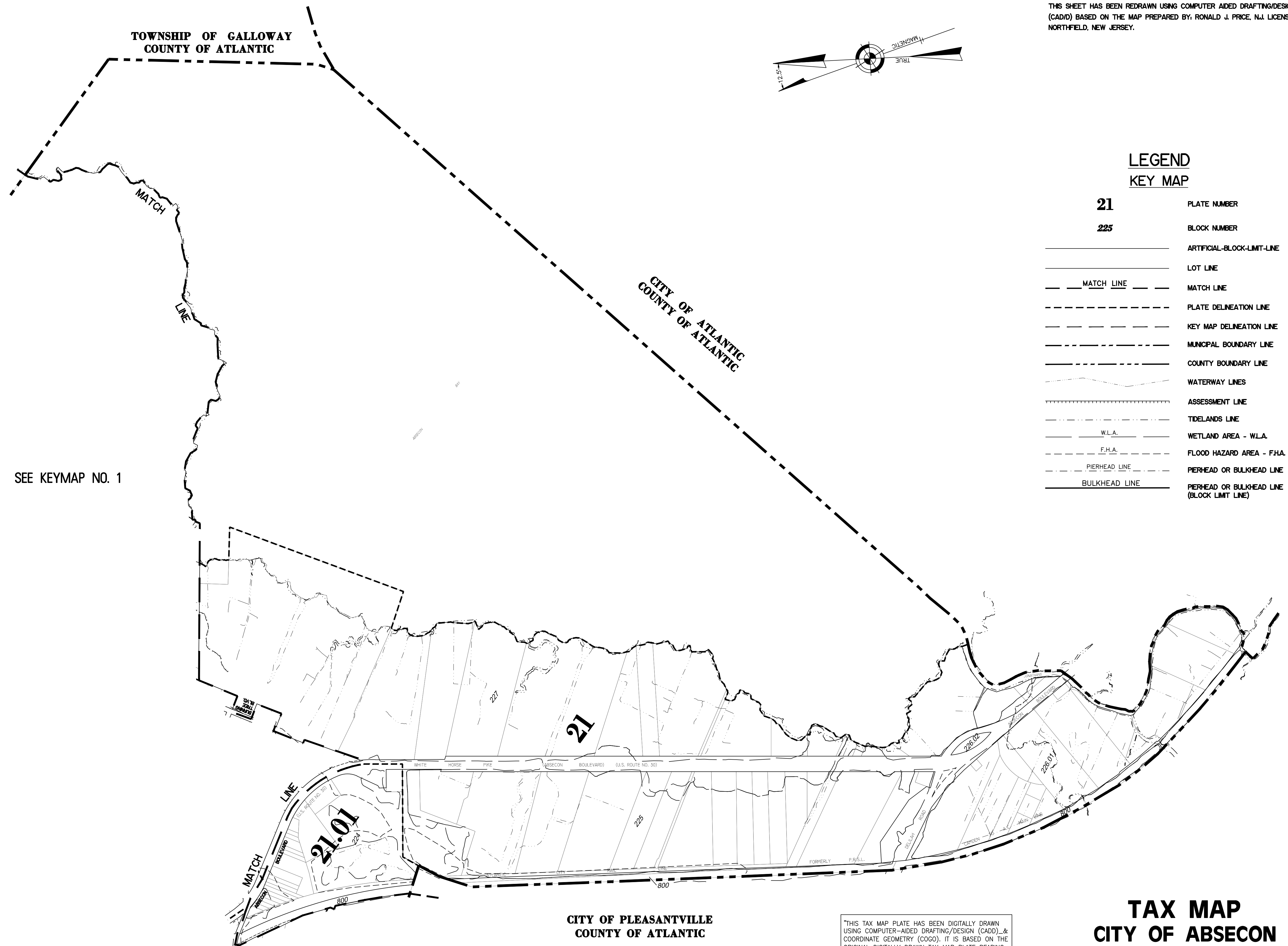
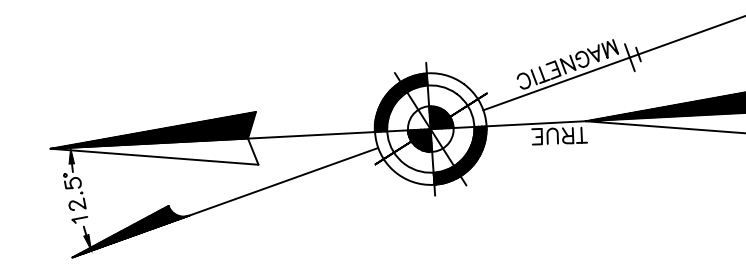


KEY MAP 2

REVISIONS		
2-22-2009	CRAIG F. REMINGTON	23924
11-23-2009	CRAIG F. REMINGTON	23924
1-4-2010	CRAIG F. REMINGTON	23924
6-4-2010	CRAIG F. REMINGTON	23924
12-31-2010	CRAIG F. REMINGTON	23924
7-25-2014	CRAIG F. REMINGTON	23924
12-10-2015	CHARLES E. ADAMSON	42627

NOTE:
THIS SHEET HAS BEEN REDRAWN USING COMPUTER AIDED DRAFTING/DESIGN (CAD/D) BASED ON THE MAP PREPARED BY: RONALD J. PRICE, N.J. LICENSE NO. 13901, NORTHFIELD, NEW JERSEY.



SEE KEYMAP NO. 1

LEGEND KEY MAP

21	PLATE NUMBER
225	BLOCK NUMBER
—	ARTIFICIAL-BLOCK-LIMIT-LINE
—	LOT LINE
— MATCH LINE —	MATCH LINE
---	PLATE DELINEATION LINE
---	KEY MAP DELINEATION LINE
---	MUNICIPAL BOUNDARY LINE
---	COUNTY BOUNDARY LINE
~	WATERWAY LINES
---	ASSESSMENT LINE
---	TIDELANDS LINE
W.L.A.	WETLAND AREA - W.L.A.
F.H.A.	FLOOD HAZARD AREA - F.H.A.
---	PIERHEAD LINE
---	BULKHEAD LINE
---	PIERHEAD OR BULKHEAD LINE (BLOCK LIMIT LINE)

**CITY OF PLEASANTVILLE
COUNTY OF ATLANTIC**

"THIS TAX MAP PLATE HAS BEEN DIGITALLY DRAWN USING COMPUTER-AIDED DRAFTING/DESIGN (CADD) & COORDINATE GEOMETRY (COGO). IT IS BASED ON THE ORIGINAL DIGITALLY DRAWN TAX MAP PLATE BEARING THE OFFICIAL NEW JERSEY DIVISION TAXATION APPROVAL STAMP WITH APPROVAL DATE 01-09-2009 SERIAL NUMBER 929 AND SIGNATURES OF SIGNERS' THOMAS J. REILLY, CHIEF, LOCAL PROPERTY, FIELD ASSISTANCE, SANTO C. DIDONATO, SUPERVISING FIELD REPRESENTATIVE. THIS TAX MAP PLATE HAS BEEN DIGITALLY UPDATED TO REFLECT CURRENT CONDITIONS. THE ORIGINAL DIGITALLY DRAWN TAX MAP PLATE WITH THE OFFICIAL APPROVAL STAMP IS ON FILE WITH REMINGTON & VERNICK ENGINEERS."

TAX MAP CITY OF ABSECON

ATLANTIC COUNTY NEW JERSEY
SCALE: 1" = 600' DATE: 11-10-2005

CRAIG F. REMINGTON LAND SURVEYOR LIC. NO. 23924

RV & W
REMINGTON, VERNICK & WALBERG ENGINEERS
24 GA 28048700
645 N. MAIN STREET, PLEASANTVILLE, N.J. 08232
(609) 645-7700, FAX (609) 645-7076
WEB SITE ADDRESS: WWW.RVW.COM

KEY MAP 2