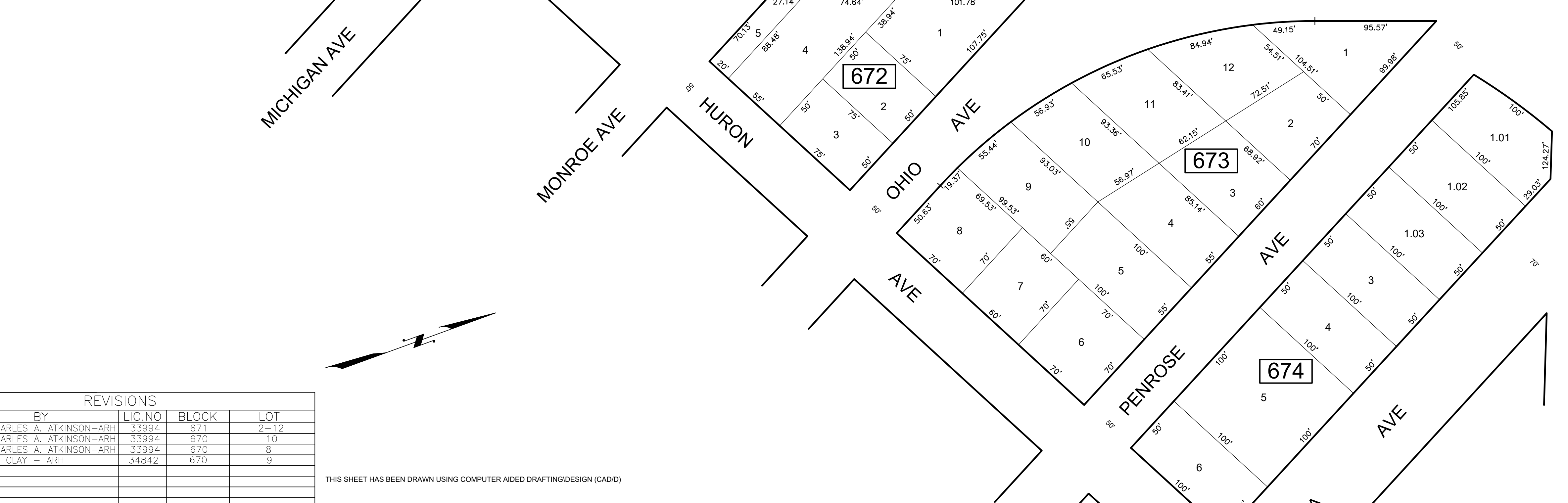
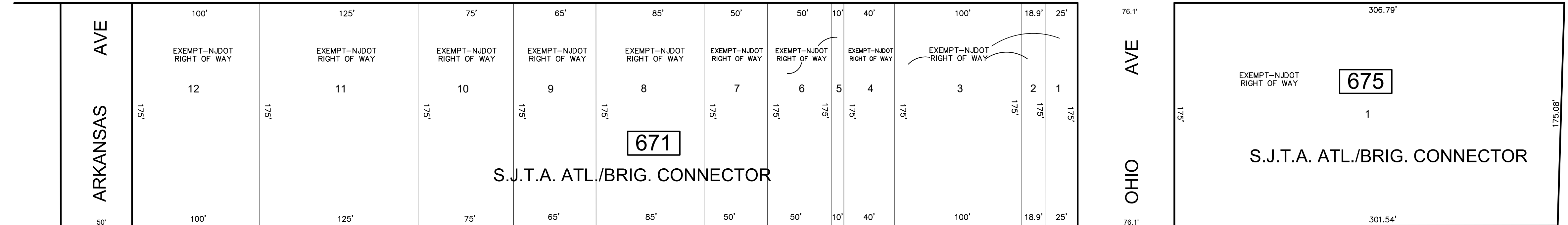
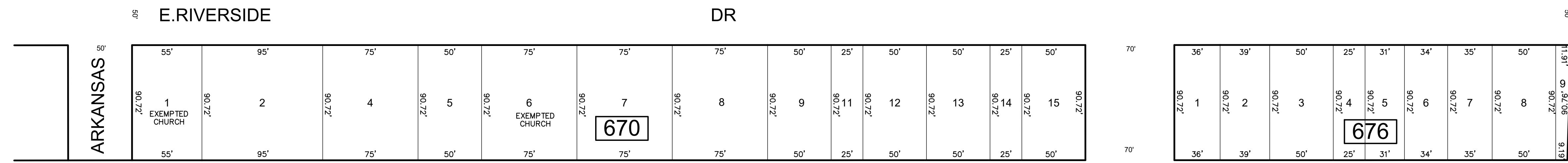


SHEET 108

SHEET 107



REVISIONS				
DATE	BY	LIC. NO.	BLOCK	LOT
09/2013	CHARLES A. ATKINSON-ARH	33994	671	2-12
09/2013	CHARLES A. ATKINSON-ARH	33994	670	10
03/2014	CHARLES A. ATKINSON-ARH	33994	670	8
01/2016	ED. CLAY - ARH	34842	670	9

THIS SHEET HAS BEEN DRAWN USING COMPUTER AIDED DRAFTING/DESIGN (CAD/D)

TAX MAP
CITY OF ATLANTIC CITY
 ATLANTIC COUNTY, NEW JERSEY
 SCALE: 1" = 50' DATE: AUG 1995
JOSEPH M DOLAN, PLS, PP
 MUNICIPAL LAND SURVEYOR
 NEW JERSEY LICENSE NO. 23930
 OFFICE OF THE CITY ENGINEER
 603 CITY HALL
 ATLANTIC CITY, NEW JERSEY 08401

THIS MAP HAS BEEN GIVEN A FORMAL CERTIFICATION BY THE DIVISION OF TAXATION ON NOVEMBER 25, 1997, SIGNED BY WILLIAM H. BLACK, CTA AND ASSIGNED SERIAL NUMBER 778

SHEET 105

SHEET 104

SHEET 116

SHEET 95