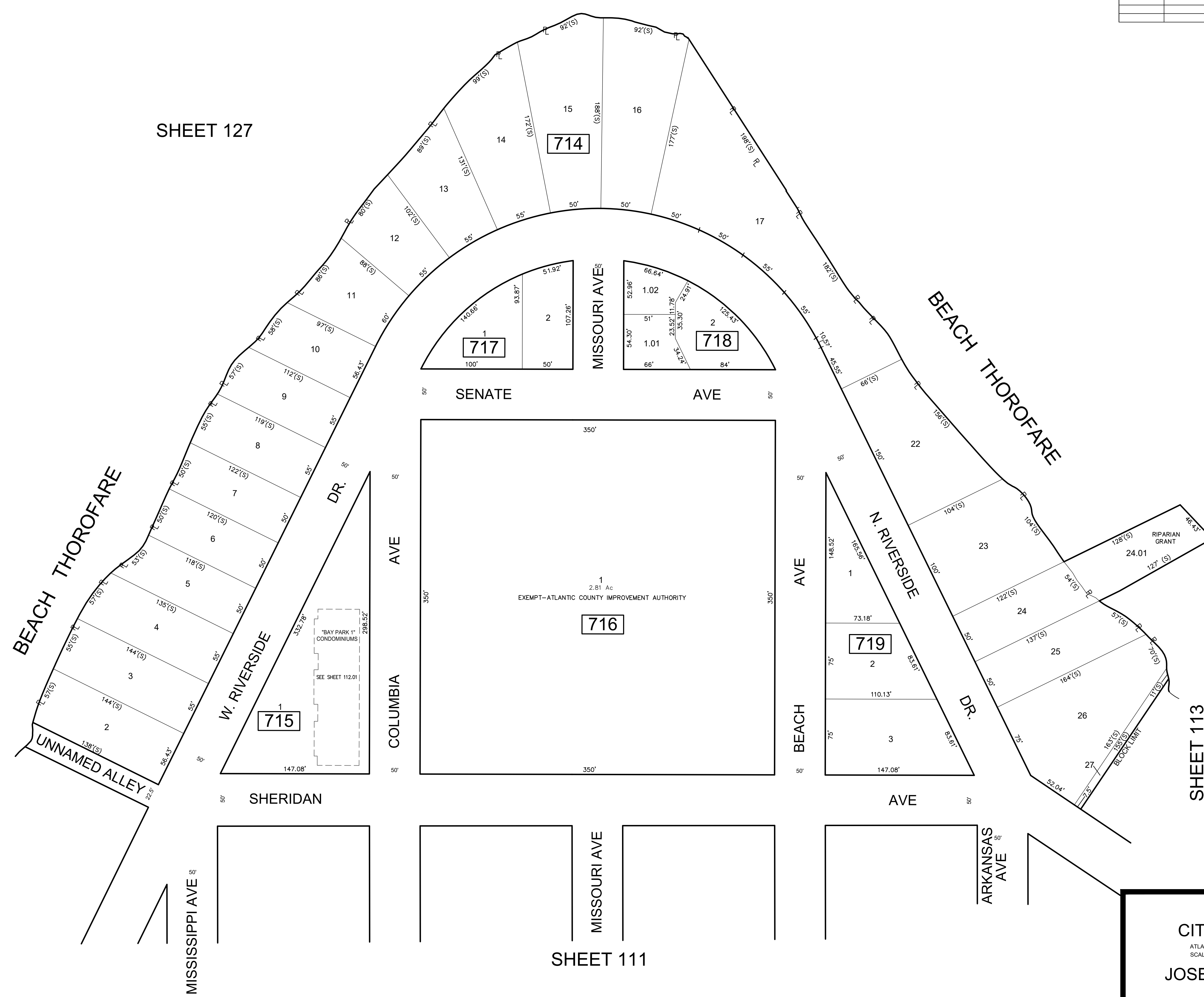
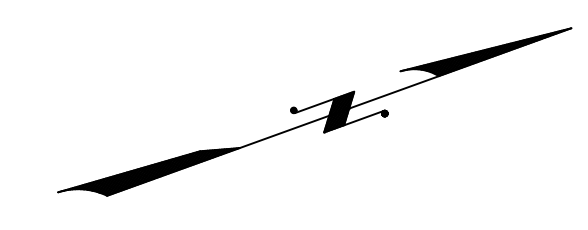


REVISIONS				
DATE	BY	LIC. NO	BLOCK	LOT
09/2013	CHARLES A. ATKINSON-ARH	33994	716	1
01/2016	ED CLAY - ARH	34842	714	27
04/2019	ED CLAY - ARH	34842	714	1

SHEET 129



SHEET 127

SHEET 129

SHEET 113

SHEET 111

THIS MAP HAS BEEN GIVEN A FORMAL CERTIFICATION BY THE DIVISION OF TAXATION ON NOVEMBER 25, 1997, SIGNED BY WILLIAM H. BLACK, CTA AND ASSIGNED SERIAL NUMBER 778

TAX MAP
CITY OF ATLANTIC CITY
 ATLANTIC COUNTY, NEW JERSEY
 SCALE: 1" = 50' DATE: AUG 1995
JOSEPH M DOLAN, PLS, PP

MUNICIPAL LAND SURVEYOR
 NEW JERSEY LICENSE NO. 23930
 OFFICE OF THE CITY ENGINEER
 603 CITY HALL
 ATLANTIC CITY, NEW JERSEY 08401

THIS SHEET HAS BEEN DRAWN USING COMPUTER AIDED DRAFTING/DESIGN (CAD/D)

TO SHOW CONDITIONS AS OF MAY 2019

COA# 24GA27973300