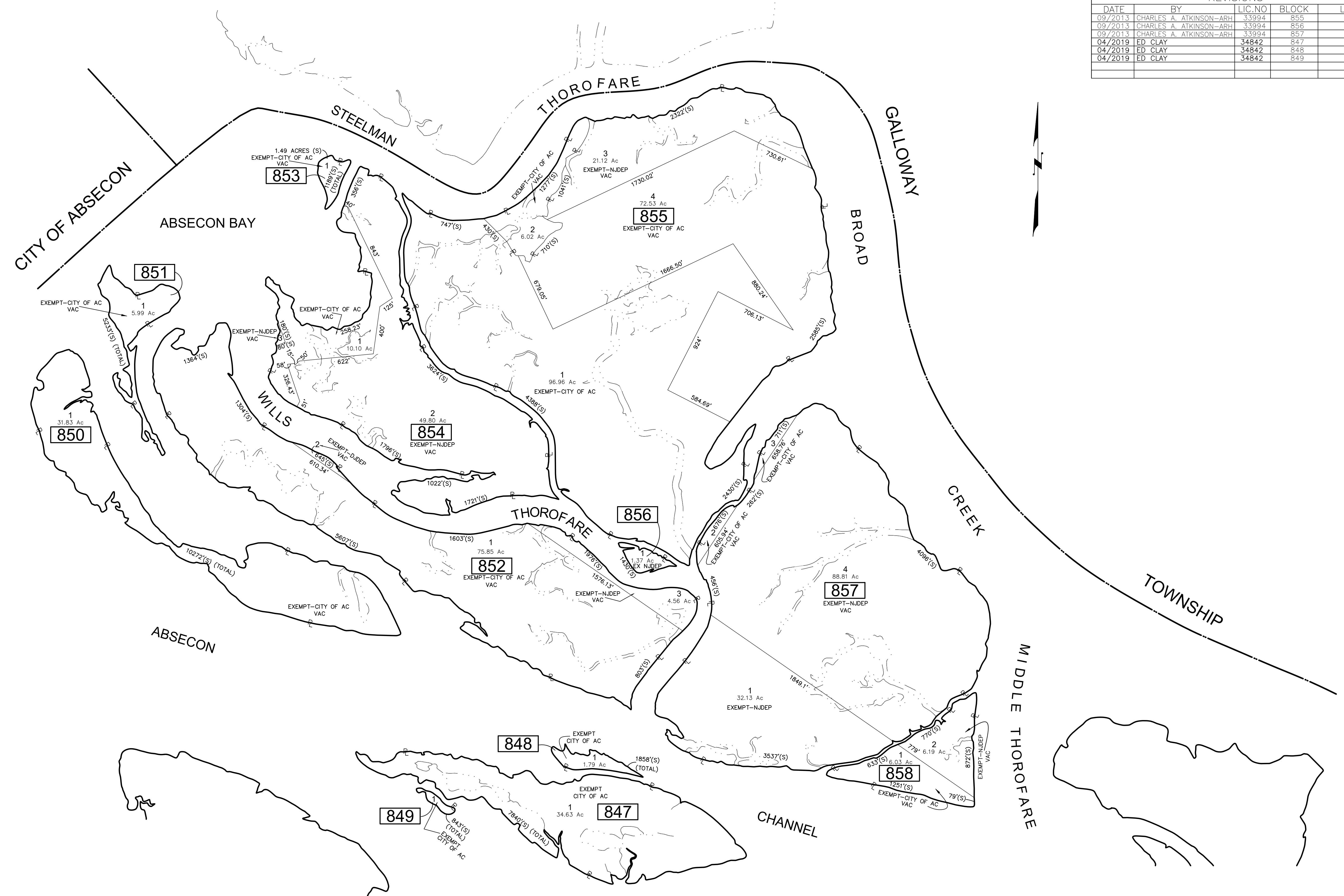


REVISIONS				
DATE	BY	LIC. NO	BLOCK	LOT
09/2013	CHARLES A. ATKINSON-ARH	33994	855	1
09/2013	CHARLES A. ATKINSON-ARH	33994	856	1
09/2013	CHARLES A. ATKINSON-ARH	33994	857	1
04/2019	ED CLAY	34842	847	1
04/2019	ED CLAY	34842	848	1
04/2019	ED CLAY	34842	849	1

SHEET 130



SHEET 130

THIS MAP HAS BEEN GIVEN A FORMAL CERTIFICATION BY THE DIVISION OF TAXATION ON NOVEMBER 25, 1997, SIGNED BY WILLIAM H. BLACK, CTA AND ASSIGNED SERIAL NUMBER 778

TAX MAP
CITY OF ATLANTIC CITY
 ATLANTIC COUNTY, NEW JERSEY
 SCALE: 1" = 400'
JOSEPH M DOLAN, PLS, PP
 MUNICIPAL LAND SURVEYOR
 NEW JERSEY LICENSE NO. 23930
 OFFICE OF THE CITY ENGINEER
 603 CITY HALL
 ATLANTIC CITY, NEW JERSEY 08401
 TO SHOW CONDITIONS AS OF MAY 2019
 COA# 24GA27973300