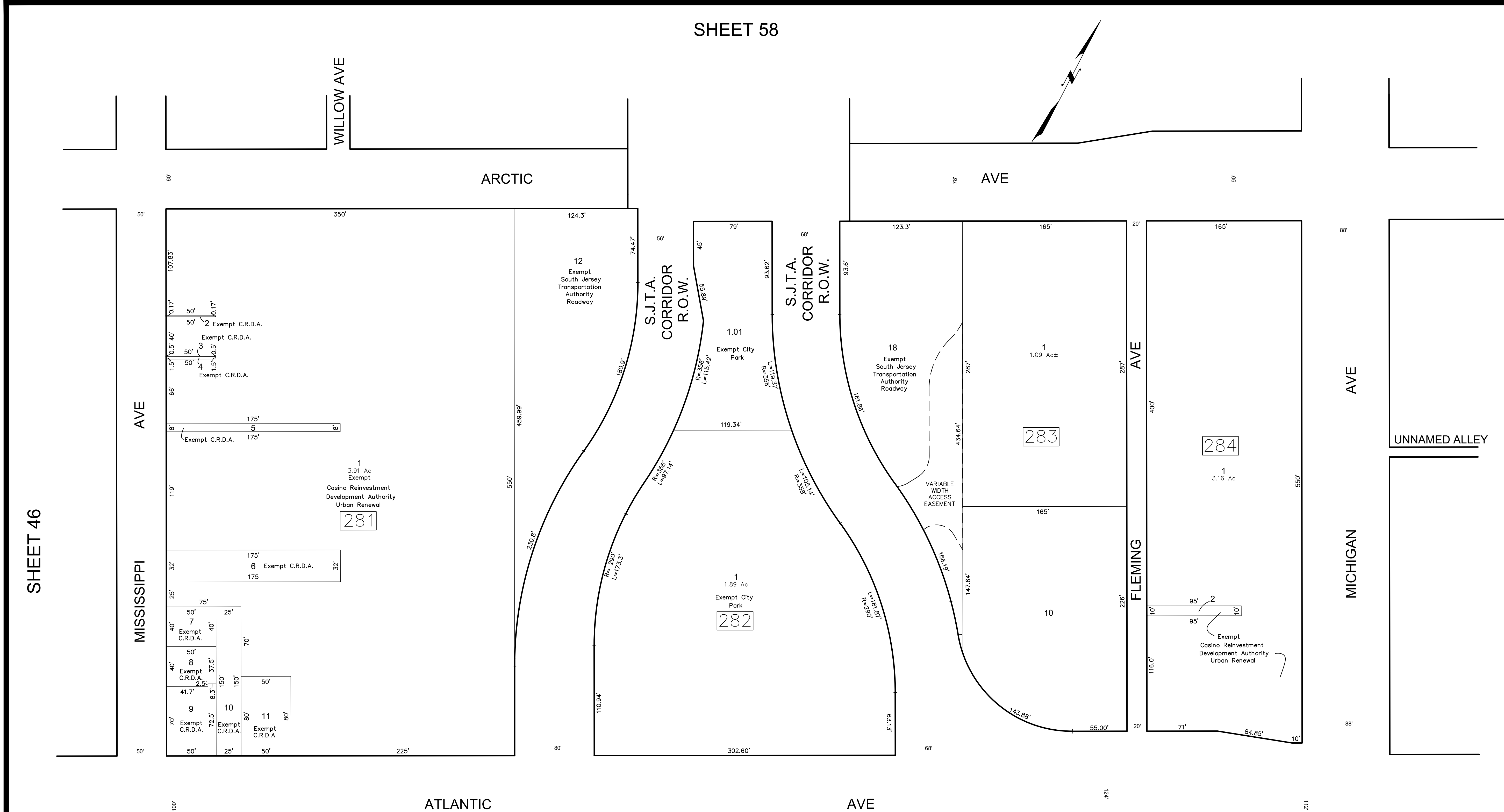


SHEET 58



SHEET 46

SHEET 48

REVISIONS				
DATE	BY	LIC. NO.	BLOCK	LOT
03/2014	CHARLES A. ATKINSON-ARH	33994	283	1

SHEET 30

THIS MAP HAS BEEN GIVEN A FORMAL CERTIFICATION BY THE DIVISION OF TAXATION ON NOVEMBER 25, 1997, SIGNED BY WILLIAM H. BLACK, CTA AND ASSIGNED SERIAL NUMBER 778

TAX MAP  
CITY OF ATLANTIC CITY  
ATLANTIC COUNTY, NEW JERSEY  
SCALE: 1" = 50'  
DATE: AUG 1995  
JOSEPH M DOLAN, PLS, PP  
MUNICIPAL LAND SURVEYOR  
NEW JERSEY LICENSE NO. 23930  
OFFICE OF THE CITY ENGINEER  
603 CITY HALL  
ATLANTIC CITY, NEW JERSEY 08401

THIS SHEET HAS BEEN DRAWN USING COMPUTER AIDED DRAFTING/DESIGN (CAD/D)