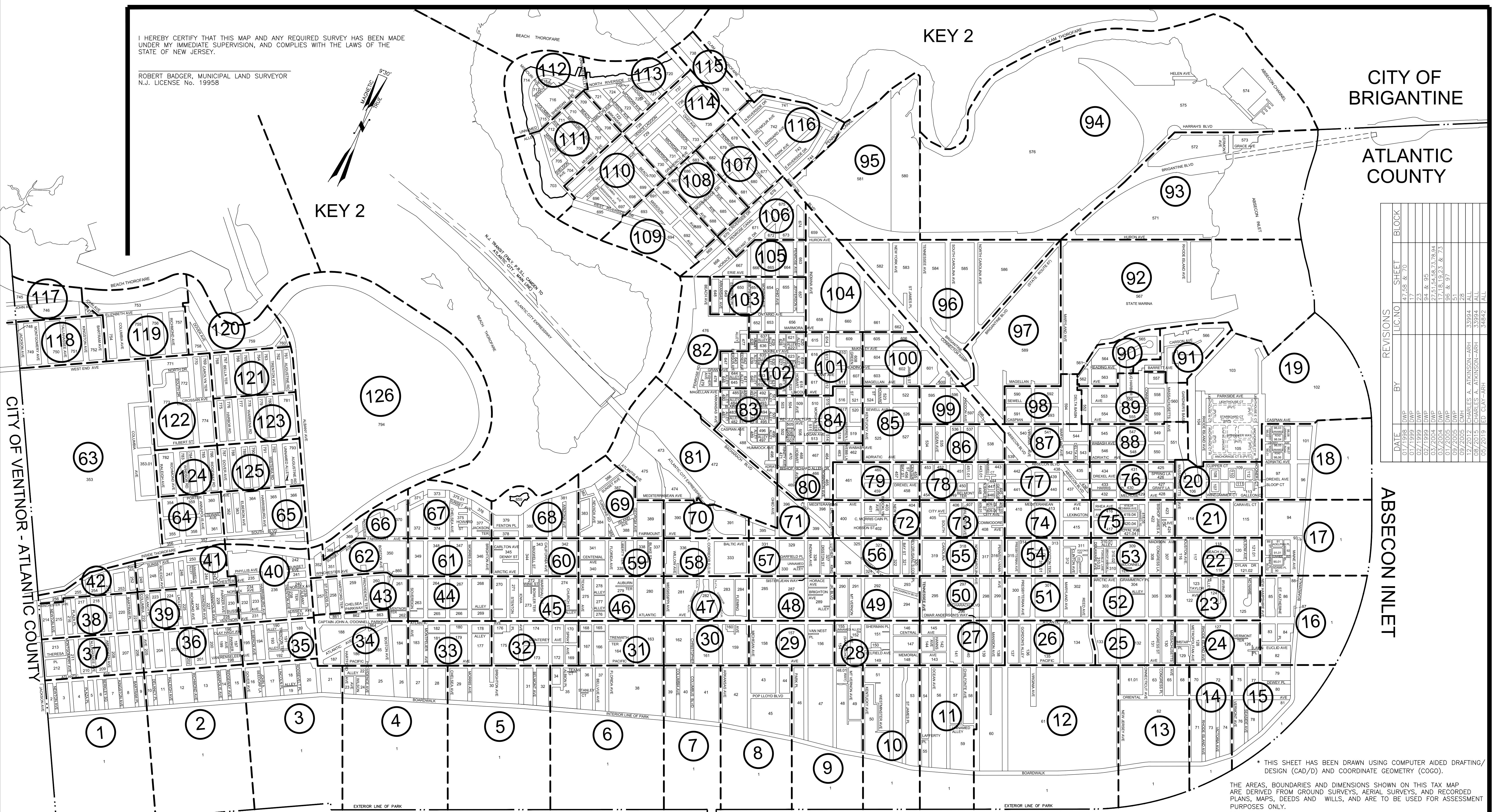
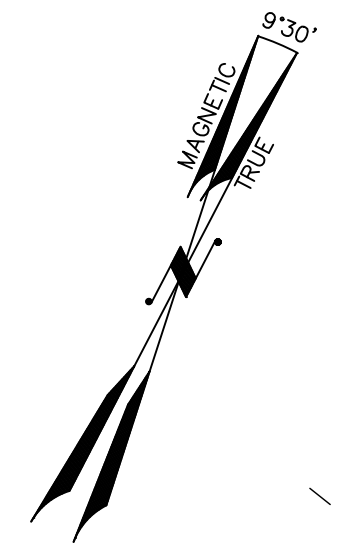


I HEREBY CERTIFY THAT THIS MAP AND ANY REQUIRED SURVEY HAS BEEN MADE UNDER MY IMMEDIATE SUPERVISION, AND COMPLIES WITH THE LAWS OF THE STATE OF NEW JERSEY.

ROBERT BADGER, MUNICIPAL LAND SURVEYOR
N.J. LICENSE No. 19958



DATE	BY	REVISIONS	LIC. NO.	SHEET	BLOCK
07/19/98	DWP			47, 98 & 70	
07/19/98	DWP			23	
02/7/1999	DWP			94 & 95	
03/7/2004	DWP			27, 51, 94, 95, 73, 94	
03/7/2004	DWP			17, 18, 19, 23 & 73	
01/20/05	DWP			96 & 97	
09/20/05	CMH			51	
12/20/12	CHARLES A. ATKINSON-ARRH		33994	ALL	
02/20/19	ED. CLAY-ARRH		34842	ALL	

LEGEND

- | | |
|------------------------------|------------------------------|
| KEY SHEET | DETAIL SHEET |
| (23) SHEET NUMBER | 234 BLOCK NUMBER |
| 234 BLOCK NUMBER | 23 LOT NUMBER |
| --- SHEET LIMIT | --- COUNTY BOUNDARY |
| --- COUNTY BOUNDARY | --- MUNICIPAL BOUNDARY |
| --- MUNICIPAL BOUNDARY | --- RIGHT OF WAY/BLOCK LIMIT |
| --- RIGHT OF WAY/BLOCK LIMIT | --- MATCH LINE |
| | --- ASSESSMENT LINE |

ATLANTIC OCEAN

- /// BREAK-LINE FOR LONG LOTS
- └ LAND-HOOKS
- * REFER TO FOOTNOTES

I HEREBY CERTIFY THAT THIS MAP HAS BEEN REVISED, AS NOTED, UNDER MY IMMEDIATE SUPERVISION AND COMPLIES WITH THE LAWS OF THE STATE OF NEW JERSEY.

CO
ED CLAY, LICENSED LAND SURVEYOR
N.J. LICENSE NO. 34842
DATE 05-01-2019

THIS MAP HAS BEEN GIVEN A FORMAL CERTIFICATION BY THE DIVISION OF TAXATION ON NOVEMBER 25, 1997, SIGNED BY WILLIAM H. BLACK, CTA AND ASSIGNED SERIAL NUMBER 778

TAX MAP
CITY OF ATLANTIC CITY
ATLANTIC COUNTY, NEW JERSEY
SCALE: 1" = 600'
DATE: AUG 1995
JOSEPH M DOLAN, PLS, PP
MUNICIPAL LAND SURVEYOR
NEW JERSEY LICENSE NO. 23930
OFFICE OF THE CITY ENGINEER
603 CITY HALL
ATLANTIC CITY, NEW JERSEY 08401

* THIS SHEET HAS BEEN DRAWN USING COMPUTER AIDED DRAFTING/DESIGN (CAD/D) AND COORDINATE GEOMETRY (COGO).
THE AREAS, BOUNDARIES AND DIMENSIONS SHOWN ON THIS TAX MAP ARE DERIVED FROM GROUND SURVEYS, AERIAL SURVEYS, AND RECORDED PLANS, MAPS, DEEDS AND WILLS, AND ARE TO BE USED FOR ASSESSMENT PURPOSES ONLY.