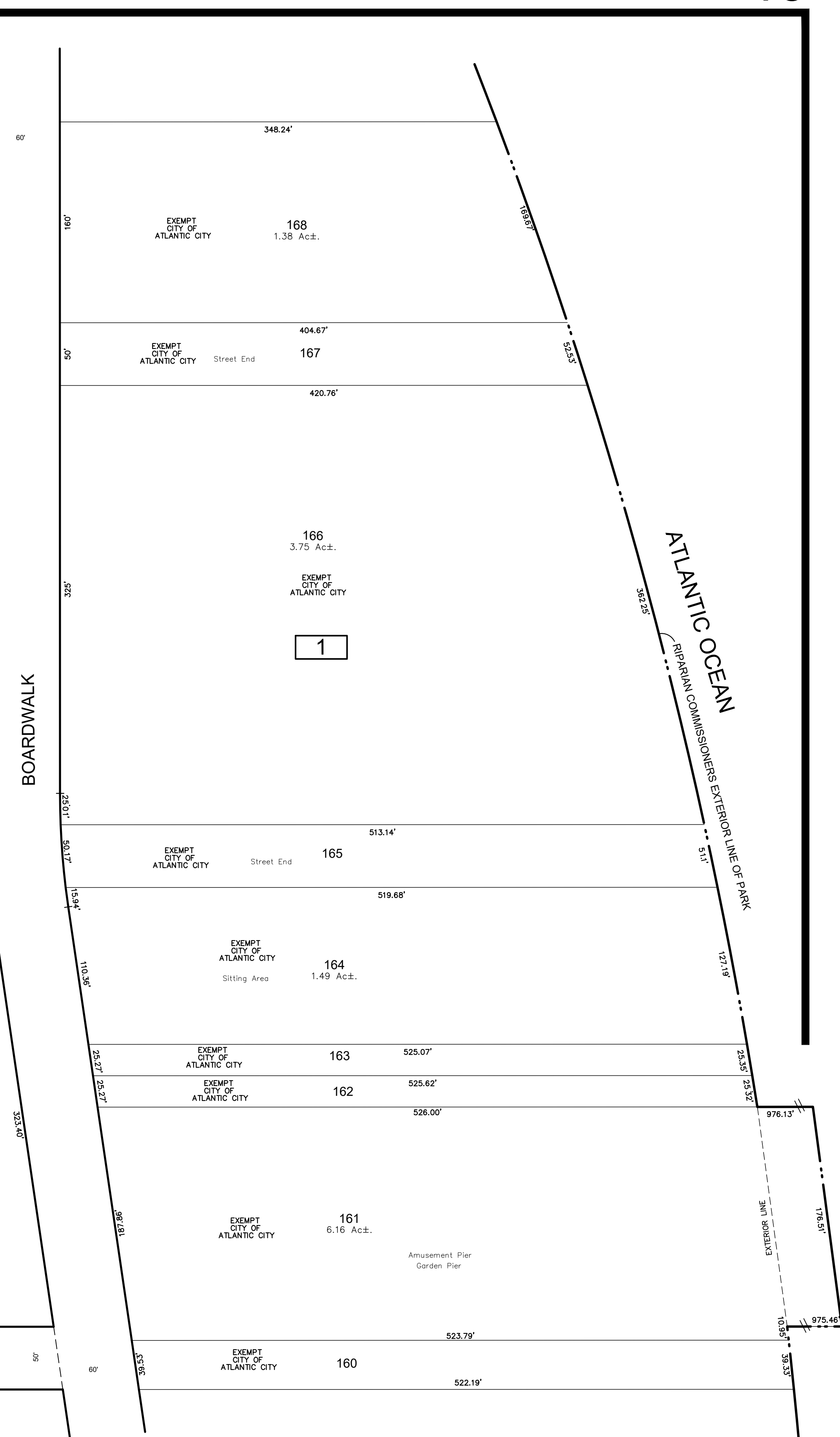
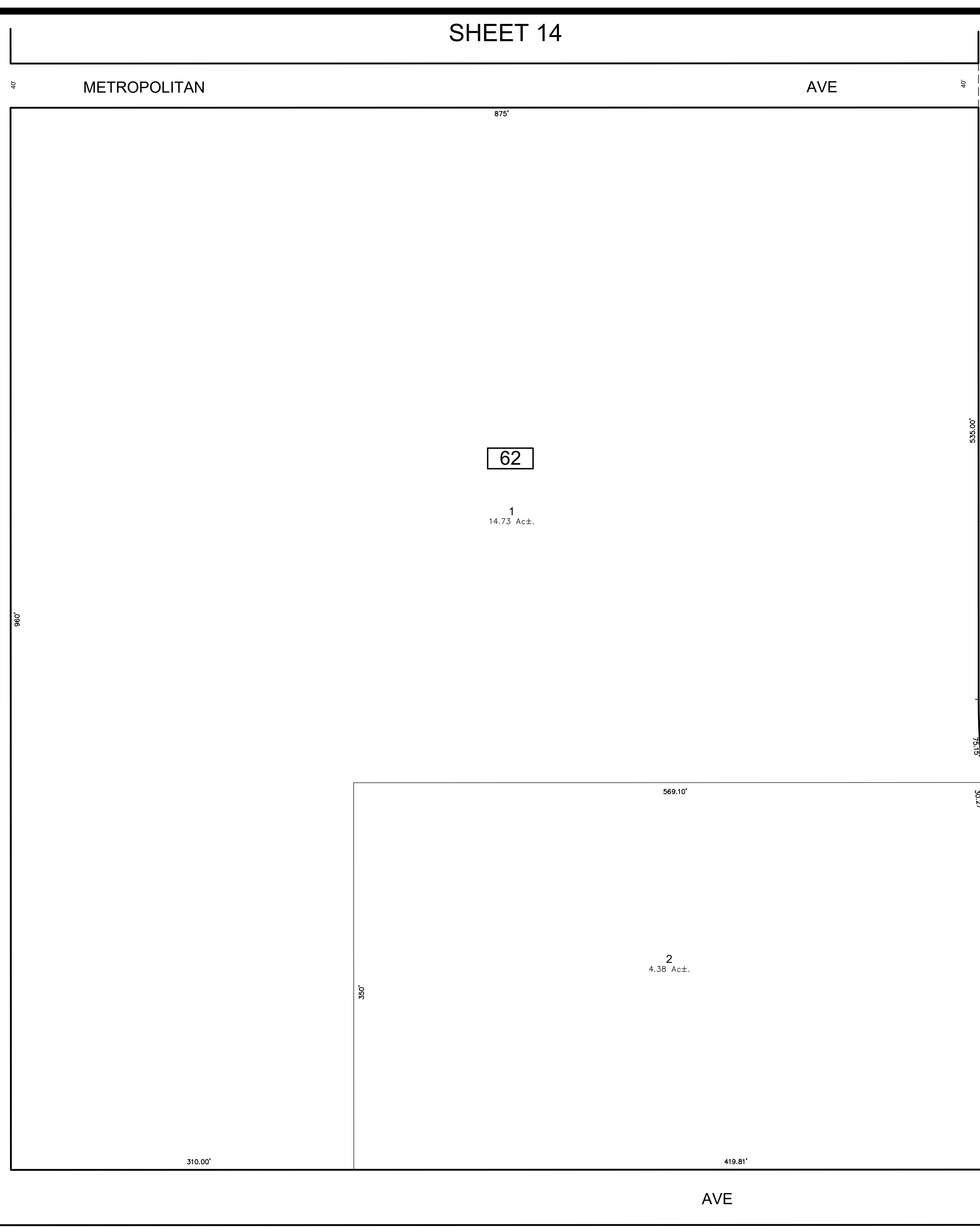
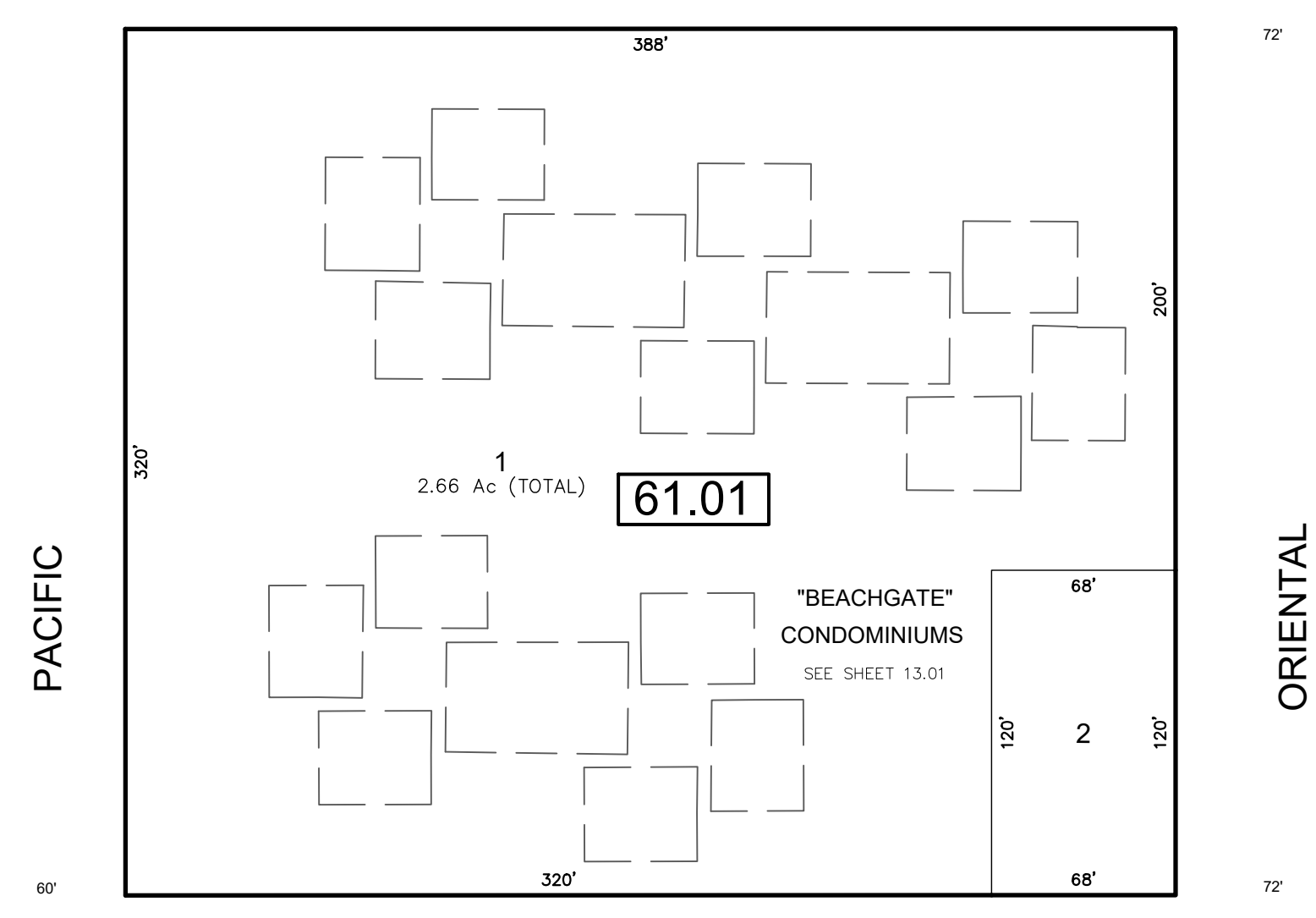
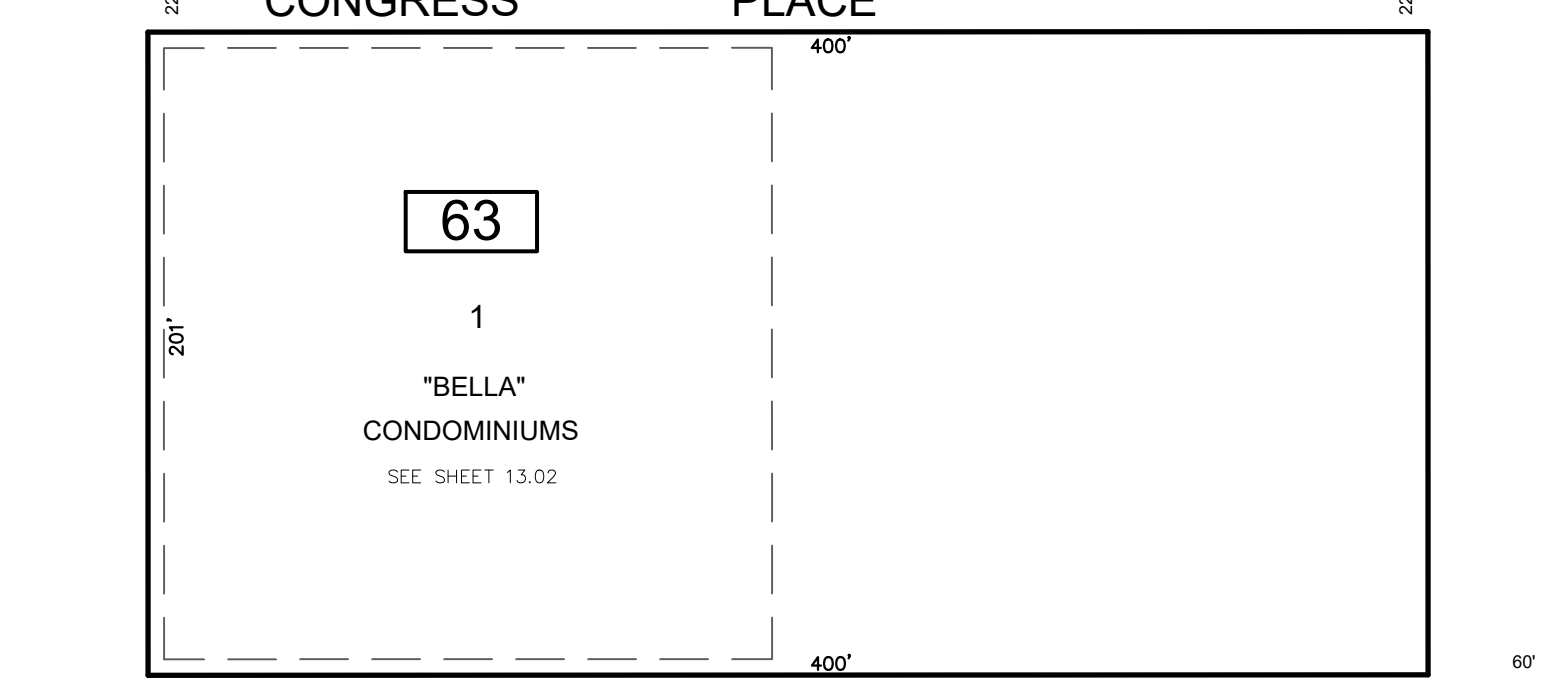
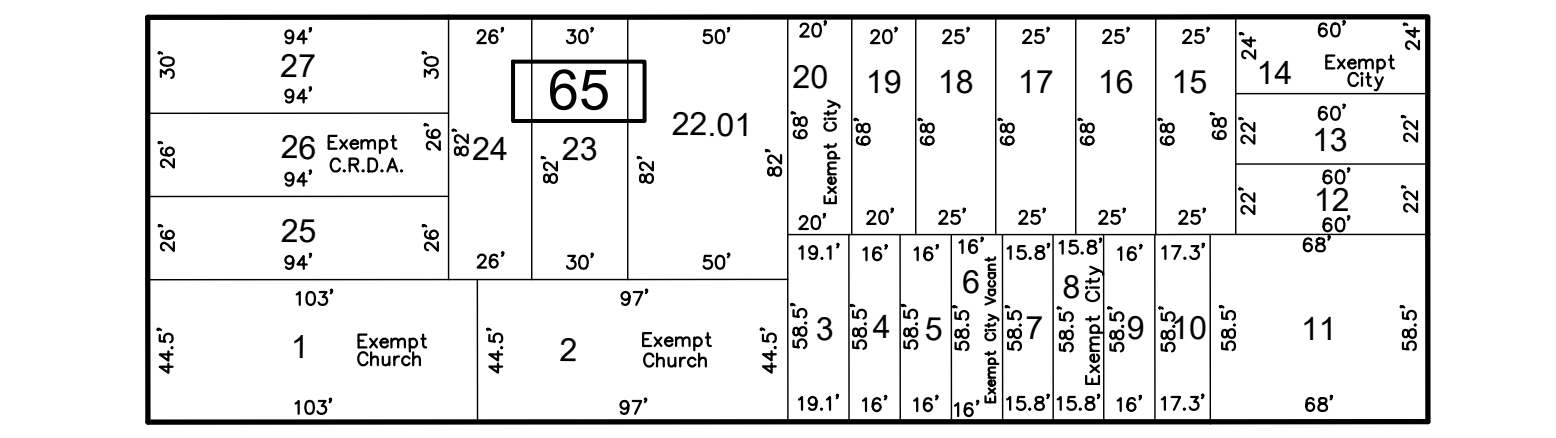
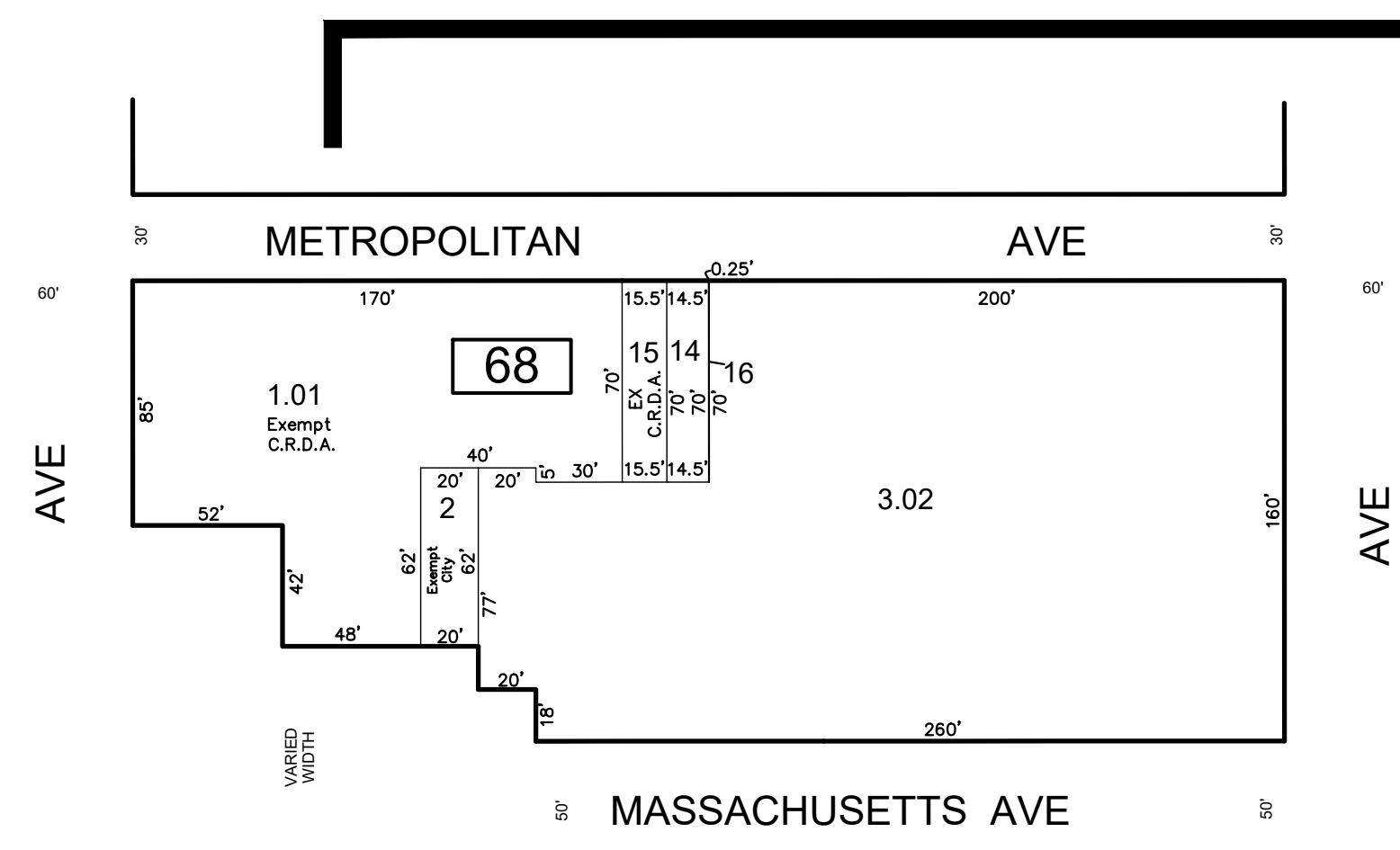


SHEET 14

SHEET24

SHEET25



REVISIONS				
DATE	BY	LIC NO	BLOCK	LOT
09/2014	CHARLES A. ATKINSON	33994	68	1
09/2014	CHARLES A. ATKINSON	33994	68	3-13
01/2016	ED CLAY - ARH	34842	65	21-22
03/2018	ED CLAY - ARH	34842	68	1.02,2,3,01
03/2019	ED CLAY - ARH	34842	1	160 & 161
04/2019	ED CLAY - ARH	34842	63	1-12

SHEET 12

THIS SHEET HAS BEEN DRAWN USING COMPUTER AIDED DRAFTING/DESIGN (CAD/D)

THIS MAP HAS BEEN GIVEN A FORMAL CERTIFICATION BY THE DIVISION OF TAXATION ON NOVEMBER 25, 1997, SIGNED BY WILLIAM H. BLACK, CTA AND ASSIGNED SERIAL NUMBER 778

**TAX MAP**  
**CITY OF ATLANTIC CITY**  
 ATLANTIC COUNTY, NEW JERSEY  
 SCALE: 1" = 60'  
**JOSEPH M DOLAN, PLS, PP**  
 MUNICIPAL LAND SURVEYOR  
 NEW JERSEY LICENSE NO. 23930  
 OFFICE OF THE CITY ENGINEER  
 603 CITY HALL  
 ATLANTIC CITY, NEW JERSEY 08401  
 TO SHOW CONDITIONS AS OF MAY 2019  
 COA# 24GA27973300