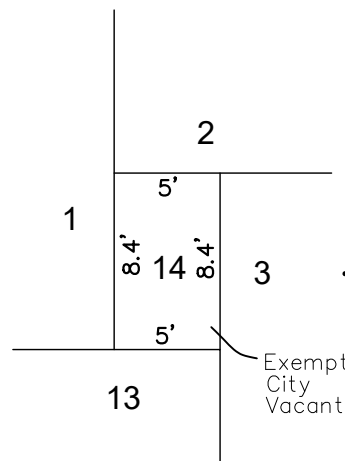


SHEET 40



DETAIL
NO SCALE

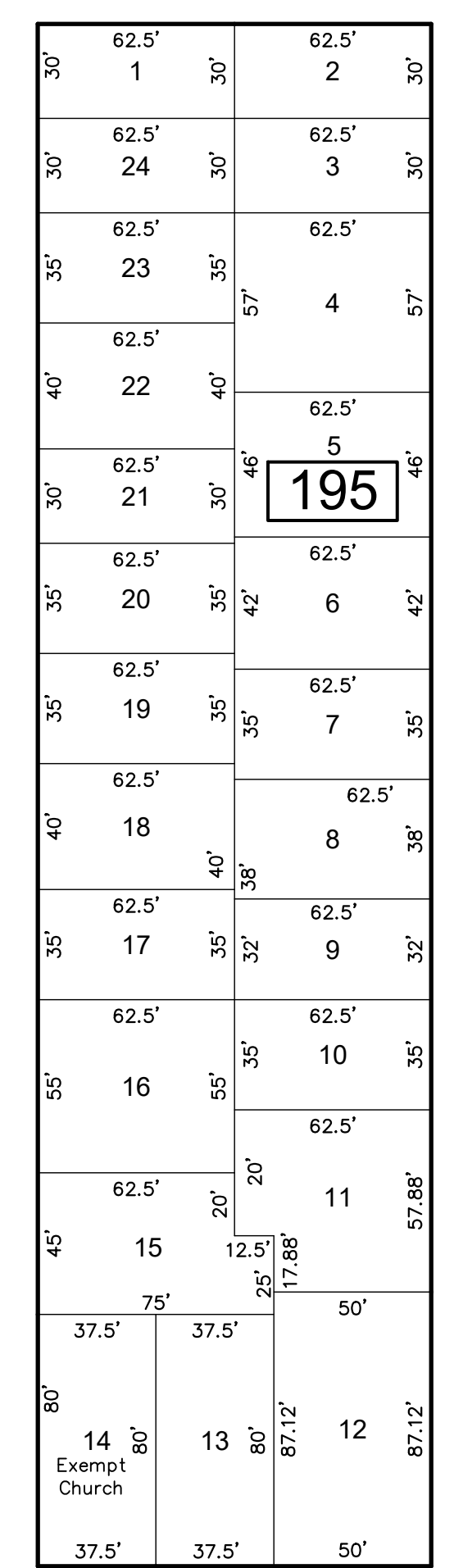
191

CLAY HAGY AVE

SHEET 36

VAN RENSELEER

VENTNOR



DOVER AVE

ELBERON AVE

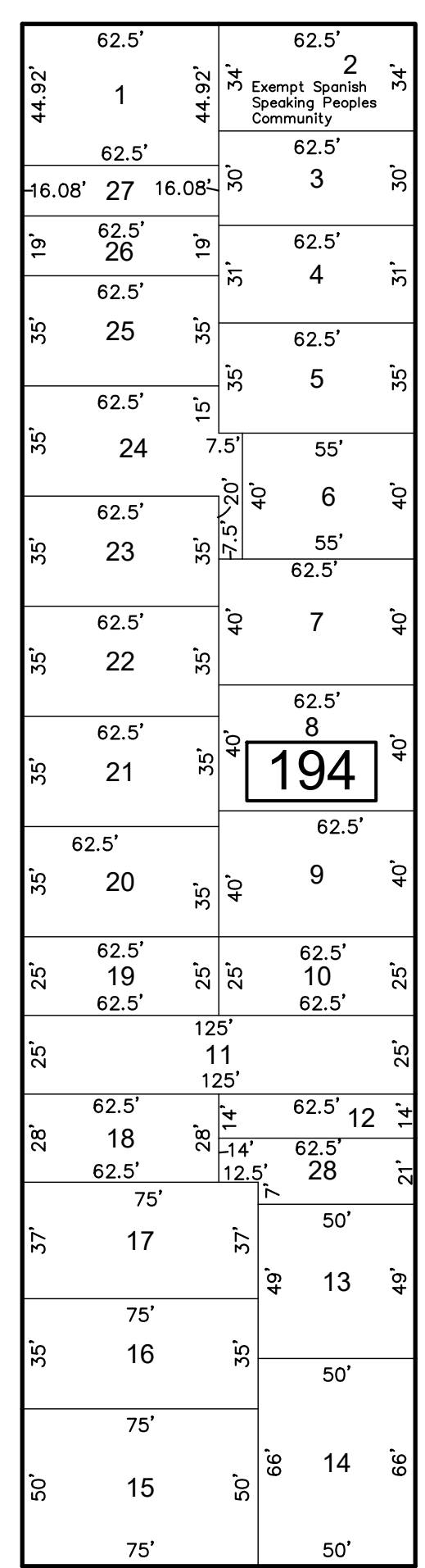
ATLANTIC

JOHN A. SEEDORF LN.

LINCOLN PL

SHEET 3

HARRISBURG AVE



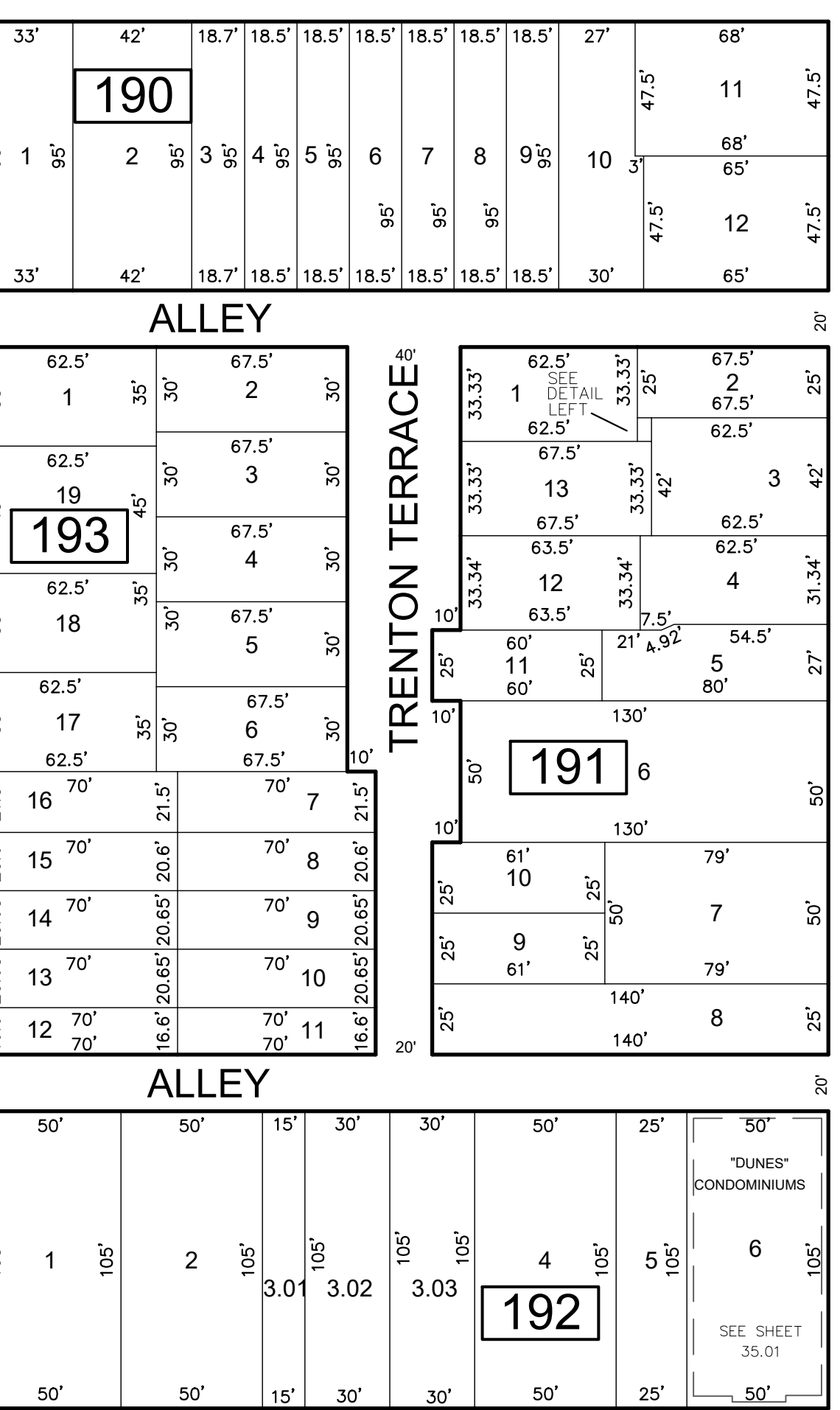
ALLEY

ALLEY

192

ALLEY

TRENTON TERRACE



AVE

189

AVE

ROOSEVELT PL

CAPTAIN JOHN A. O'DONNELL PARKWAY

ALBANY AVE

ATLANTIC AVE

PACIFIC AVE

THIS SHEET HAS BEEN DRAWN USING COMPUTER AIDED DRAFTING/DESIGN (CAD/D)

REVISIONS				
DATE	BY	LIC. NO.	BLOCK	LOT

THIS MAP HAS BEEN GIVEN A FORMAL CERTIFICATION BY THE DIVISION OF TAXATION ON NOVEMBER 25, 1997, SIGNED BY WILLIAM H. BLACK, CTA AND ASSIGNED SERIAL NUMBER 778

TAX MAP
CITY OF ATLANTIC CITY
 ATLANTIC COUNTY, NEW JERSEY
 SCALE: 1" = 50'
JOSEPH M DOLAN, PLS, PP
 MUNICIPAL LAND SURVEYOR
 NEW JERSEY LICENSE NO. 23930
 OFFICE OF THE CITY ENGINEER
 603 CITY HALL
 ATLANTIC CITY, NEW JERSEY 08401

TO SHOW CONDITIONS AS OF MAY 2019

COA# 24GA27973300