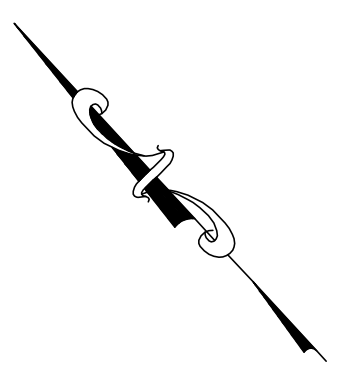


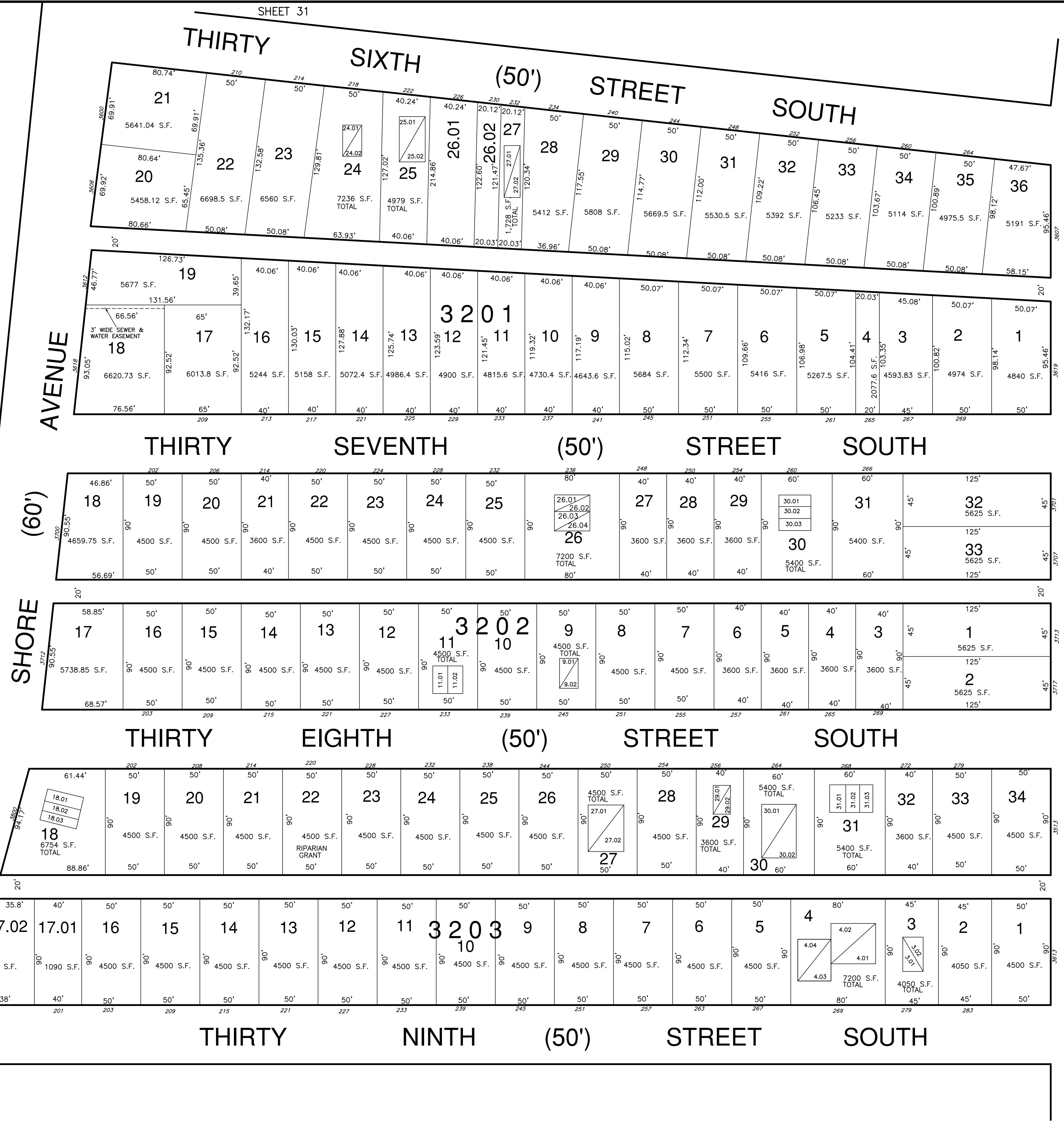
REVISIONS			
DATE	BY	LIC. No.	COMMENTS
1/1/18	MATTHEW F. DORAN	26273	BL. 3203 LOT 22

CONDO LIST			
BLOCK	LOT	UNIT	REMARKS
3201	24.01	A	1896 1 ST FLOOR
3201	24.02	B	1896 2 ND FLOOR
3201	25.01	A	1691 1 ST FLOOR
3201	25.02	B	1691 2 ND FLOOR
3201	27.01	A	864 1 ST FLOOR
3201	27.02	B	864 2 ND FLOOR
3202	9.01	A	1680 1 ST FLOOR
3202	9.02	B	1680 2 ND FLOOR
3202	11.01	A	810 SIDE BY SIDE
3202	11.02	B	1090 SIDE BY SIDE
3202	26.01	A	1300 1 ST FLOOR
3202	26.02	B	1300 2 ND FLOOR
3202	26.03	C	975 1 ST FLOOR
3202	26.04	D	975 2 ND FLOOR
3202	30.01	A	1184 NORTH SIDE
3202	30.02	B	1184 MIDDLE UNIT
3202	30.03	C	1184 SOUTH SIDE
3203	3.01	A	798 1 ST FLOOR
3203	3.02	B	786 2 ND FLOOR
3203	4.01	A	1235 1 ST FLOOR
3203	4.02	B	905 2 ND FLOOR
3203	4.03	C	1035 1 ST FLOOR
3203	4.04	D	1035 2 ND FLOOR
3203	18.01	A	1152 N E SIDE
3203	18.02	B	1152 MIDDLE UNIT
3203	18.03	C	1152 S W SIDE
3203	27.01	N/A	1288 2 ND FLOOR
3203	27.02	N/A	1296 1 ST FLOOR
3203	29.01	A	2109 1 ST FLOOR
3203	29.02	B	2109 2 ND FLOOR
3203	30.01	A	1278 1 ST FLOOR
3203	30.02	B	1278 2 ND FLOOR
3203	31.01	A	1210 EAST SIDE
3203	31.02	B	1056 MIDDLE UNIT
3203	31.03	C	1210 WEST SIDE



SHEET 31

SHEET 37



AVENUE

(100')

BRIGANTINE

SHEET 30

SHEET 36

THIS SHEET HAS BEEN REDRAWN USING COMPUTER AIDED DRAFTING/DESIGN (CAD/D) BASED ON THE MAP PREPARED BY WILLIAM C. KISSANE, N.J. L.S. NO. 17427. THIS SHEET WAS STAMPED ON APRIL 21, 1986 BY THE OFFICIAL NEW JERSEY DIVISION OF TAXATION AND ASSIGNED SERIAL NUMBER 856 SIGNED IVAN HAFKOWYCH. THE ORIGINAL APPROVED MAP IS ON FILE IN THE OFFICE OF DORAN ENGINEERING, MATTHEW F. DORAN P.E., P.L.S. N.J. L.S. NO. 26273.

TAX MAP
CITY OF BRIGANTINE
 ATLANTIC COUNTY, NEW JERSEY
 SCALE: 1" = 50' JANUARY 1986
MATTHEW F. DORAN P.E., P.L.S.
 PROFESSIONAL ENGINEER & LAND SURVEYOR
 NEW JERSEY LICENSE NO. 26273
 840 NORTH MAIN STREET
 PLEASANTVILLE, NEW JERSEY, 08232
 TO SHOW CONDITIONS AS OF JAN. 1, 2012.