

REVISIONS			
DATE	BY	LIC. No.	COMMENTS

SHEET 15

SHEET 11

SHEET 8

FOURTEEN ST. SO.

THIRTIETH ST. SO.

TWELTH ST. SO.

ELEVENTH ST. SO.

TENTH ST. SO.

NINTH ST. SO.

EIGHTH ST. SO.

1501

1105

1103

1101

805

803

(60')

(60')

(60')

(60')

(60')

(60')

SHEET 9

OCEAN

(80')

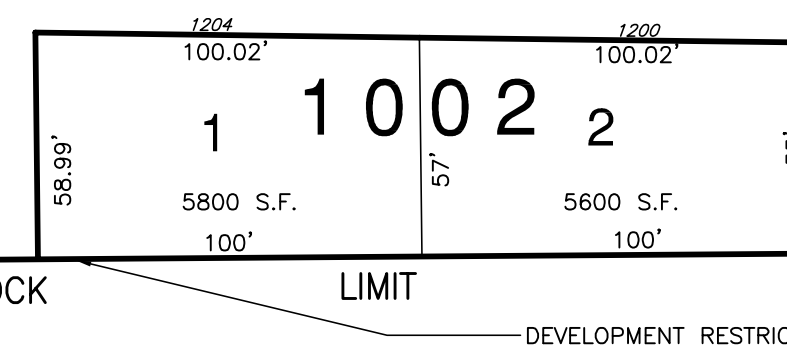
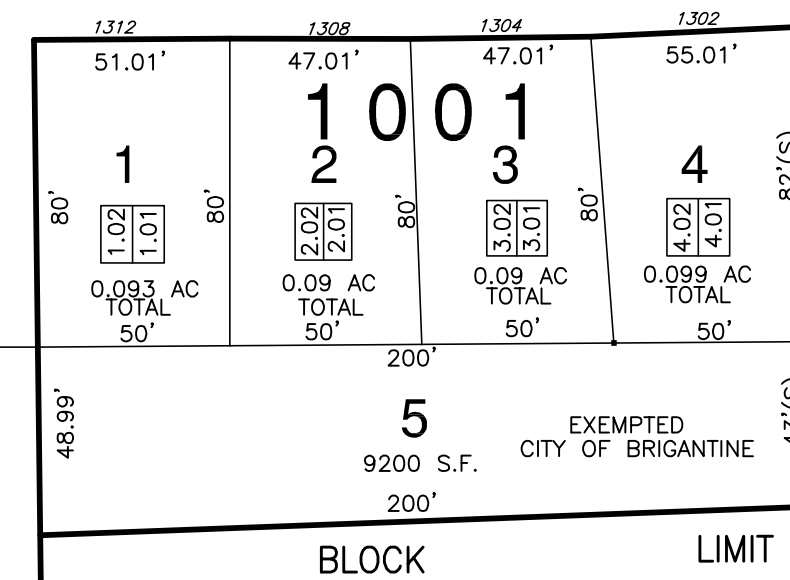
AVENUE

(60')

(30')

MATCH

SHEET 14



BLOCK LIMIT DEVELOPMENT RESTRICTION LINE

APPROX. MEAN HIGH WATER LINE, LOCATED MAY 1983

KEY SHEET 3

ATLANTIC

OCEAN

CONDO LIST				
BLOCK	LOT	UNIT	SQ. FT.	REMARKS
1001	1.01	A	1974 SF	EAST SIDE
1001	1.02	B	1974 SF	WEST SIDE
1001	2.01	A	1974 SF	EAST SIDE
1001	2.02	B	1974 SF	WEST SIDE
1001	3.01	A	1974 SF	EAST SIDE
1001	3.02	B	1974 SF	WEST SIDE
1001	4.01	A	1974 SF	EAST SIDE
1001	4.02	B	1974 SF	WEST SIDE

THIS SHEET HAS BEEN REDRAWN USING COMPUTER AIDED DRAFTING/DESIGN (CAD/D) BASED ON THE MAP PREPARED BY WILLIAM C. KISSANE, N.J. L.S. NO 17427. THIS SHEET WAS STAMPED ON APRIL 21, 1986 BY THE OFFICIAL NEW JERSEY DIVISION OF TAXATION AND ASSIGNED SERIAL NUMBER 656 SIGNED IVAN HATKOWICZ. THE ORIGINAL APPROVED MAP IS ON FILE IN THE OFFICE OF DORAN ENGINEERING, MATTHEW F. DORAN P.E., P.L.S. N.J. L.S. NO 26273.

TAX MAP
CITY OF BRIGANTINE
 ATLANTIC COUNTY, NEW JERSEY
 SCALE: 1" = 50'
 JANUARY 1986
MATTHEW F. DORAN P.E., P.L.S.
 PROFESSIONAL ENGINEER & LAND SURVEYOR
 NEW JERSEY LICENSE NO. 26273
 840 NORTH MAIN STREET
 PLEASANTVILLE, NEW JERSEY, 08232
 TO SHOW CONDITIONS AS OF JAN. 1, 2012