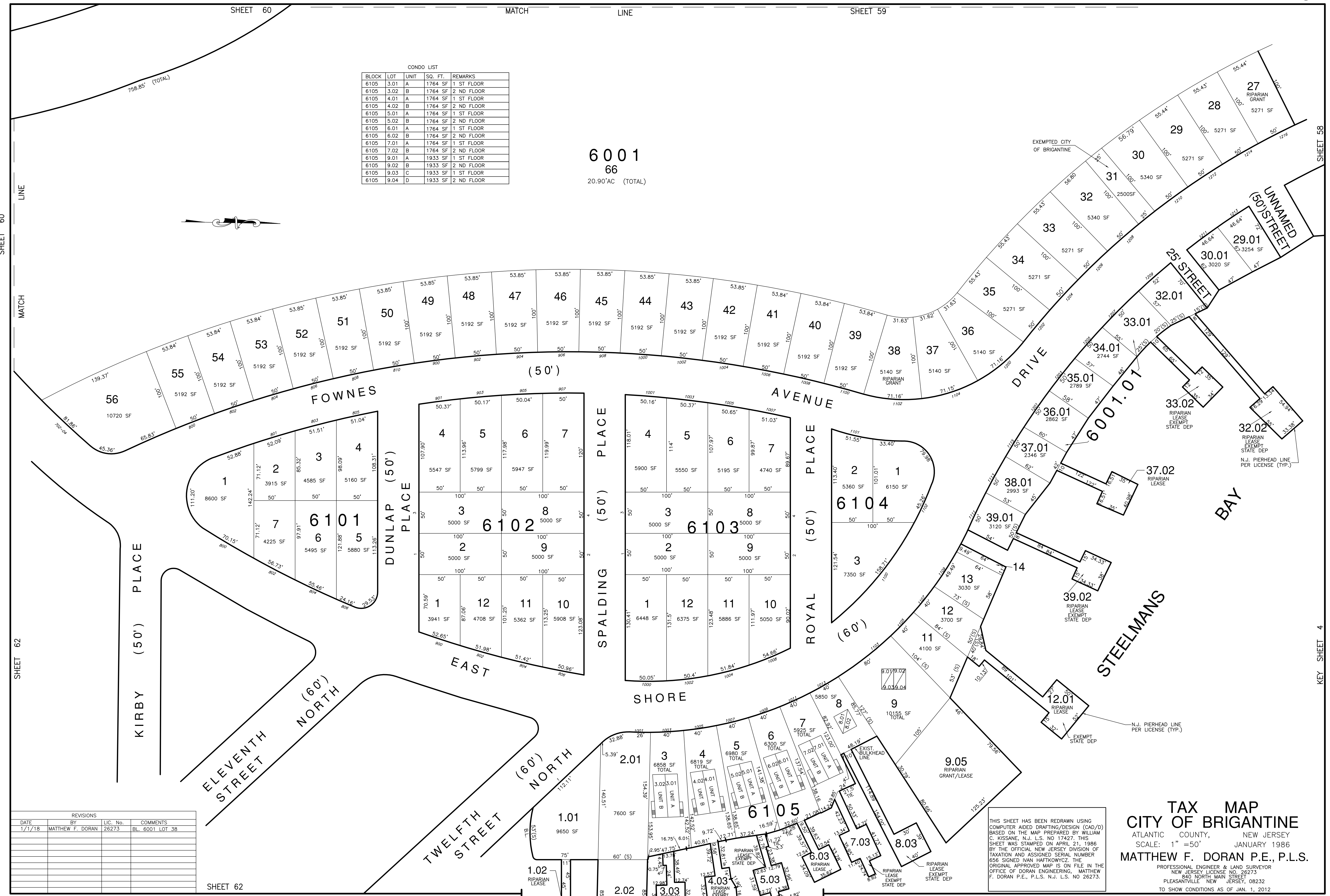


SHEET 60 MATCH LINE SHEET 59

CONDO LIST

BLOCK	LOT	UNIT	SQ. FT.	REMARKS
6105	3.01	A	1764 SF	1 ST FLOOR
6105	3.02	B	1764 SF	2 ND FLOOR
6105	4.01	A	1764 SF	1 ST FLOOR
6105	4.02	B	1764 SF	2 ND FLOOR
6105	5.01	A	1764 SF	1 ST FLOOR
6105	5.02	B	1764 SF	2 ND FLOOR
6105	6.01	A	1764 SF	1 ST FLOOR
6105	6.02	B	1764 SF	2 ND FLOOR
6105	7.01	A	1764 SF	1 ST FLOOR
6105	7.02	B	1764 SF	2 ND FLOOR
6105	9.01	A	1933 SF	1 ST FLOOR
6105	9.02	B	1933 SF	2 ND FLOOR
6105	9.03	C	1933 SF	1 ST FLOOR
6105	9.04	D	1933 SF	2 ND FLOOR

6001
66
20.90'AC (TOTAL)



REVISIONS

DATE	BY	LIC. No.	COMMENTS
1/1/18	MATTHEW F. DORAN	26273	BL. 6001 LOT 38

THIS SHEET HAS BEEN REDRAWN USING COMPUTER AIDED DRAFTING/DESIGN (CAD/D) BASED ON THE MAP PREPARED BY WILLIAM C. KISSANE, N.J. L.S. NO. 17427. THIS SHEET WAS STAMPED ON APRIL 21, 1986 BY THE OFFICIAL NEW JERSEY DIVISION OF TAXATION AND ASSIGNED SERIAL NUMBER 656 SIGNED IVAN HAFKOWYCZ. THE ORIGINAL APPROVED MAP IS ON FILE IN THE OFFICE OF DORAN ENGINEERING, MATTHEW F. DORAN P.E., P.L.S. N.J. L.S. NO. 26273.

TAX MAP
CITY OF BRIGANTINE
ATLANTIC COUNTY, NEW JERSEY
SCALE: 1" = 50' JANUARY 1986
MATTHEW F. DORAN P.E., P.L.S.
PROFESSIONAL ENGINEER & LAND SURVEYOR
NEW JERSEY LICENSE NO. 26273
840 NORTH MAIN STREET
PLEASANTVILLE, NEW JERSEY, 08232
TO SHOW CONDITIONS AS OF JAN. 1, 2012

SHEET 62

SHEET 58

KEY SHEET 4