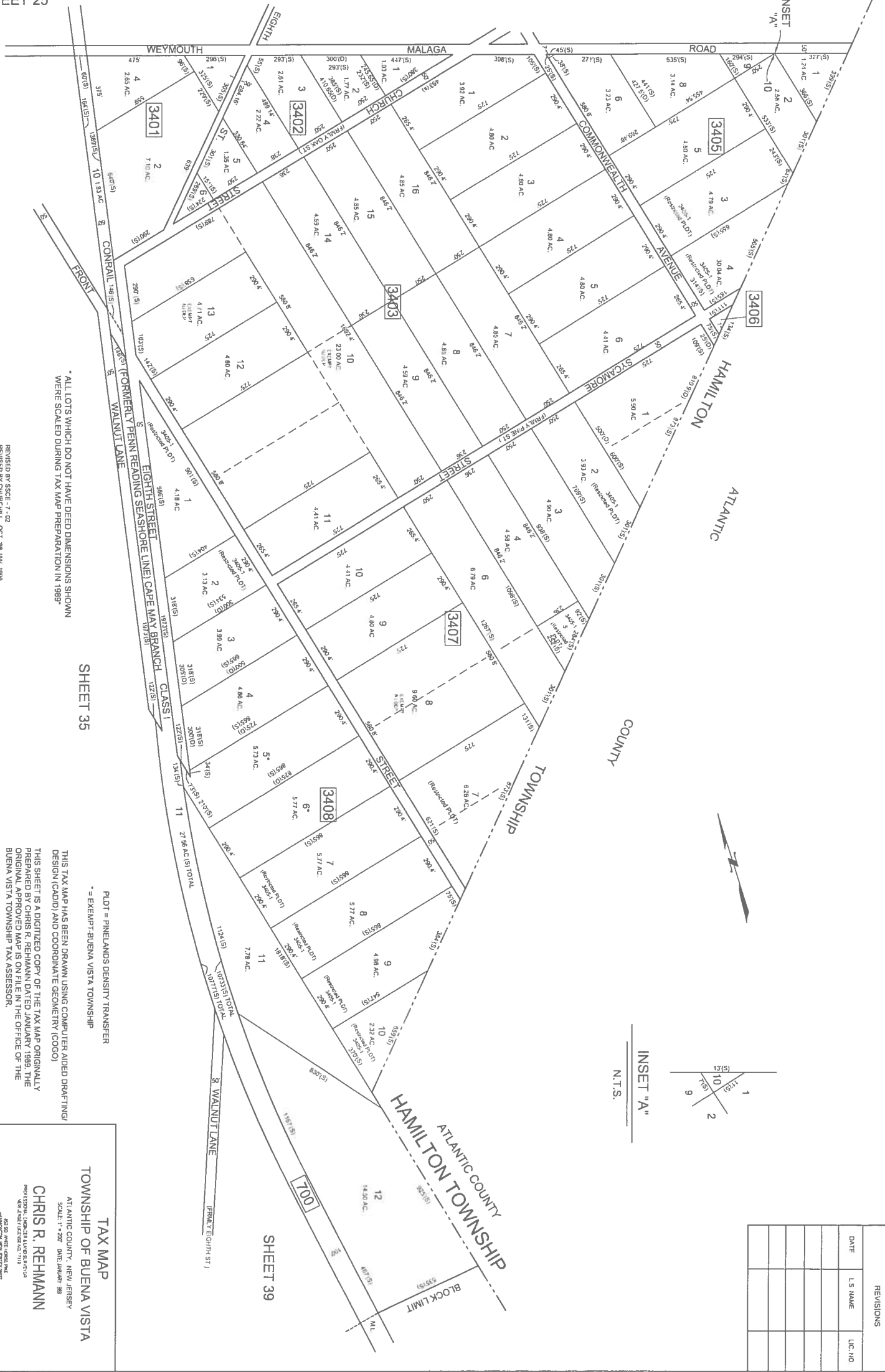
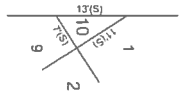


SEE INSET "A"



INSET "A"
N.T.S.



REVISIONS		
DATE	L.S. NAME	LIC. NO.

* ALL LOTS WHICH DO NOT HAVE DEED DIMENSIONS SHOWN WERE SCALED DURING TAX MAP PREPARATION IN 1989 *

SHEET 35

PLDT = PINELANDS DENSITY TRANSFER
* = EXEMPT-BUENA VISTA TOWNSHIP

THIS TAX MAP HAS BEEN DRAWN USING COMPUTER AIDED DRAFTING/DESIGN (CAD/D) AND COORDINATE GEOMETRY (COG). THIS SHEET IS A DIGITIZED COPY OF THE TAX MAP ORIGINALLY PREPARED BY CHRIS R. REHMANN DATED JANUARY 1989. THE ORIGINAL APPROVED MAP IS ON FILE IN THE OFFICE OF THE BUENA VISTA TOWNSHIP TAX ASSESSOR.

TAX MAP
TOWNSHIP OF BUENA VISTA

CHRIS R. REHMANN
PROFESSIONAL LAND SURVEYOR
NEW JERSEY LICENSE NO. 1116
4000 JAMES HENRI BLVD.
MANTON, NEW JERSEY 08057

REVISED BY SSCC - 7-02
REVISOR BY CHURCHILL, OCT. '98 JAN. 1999

SHEET 39