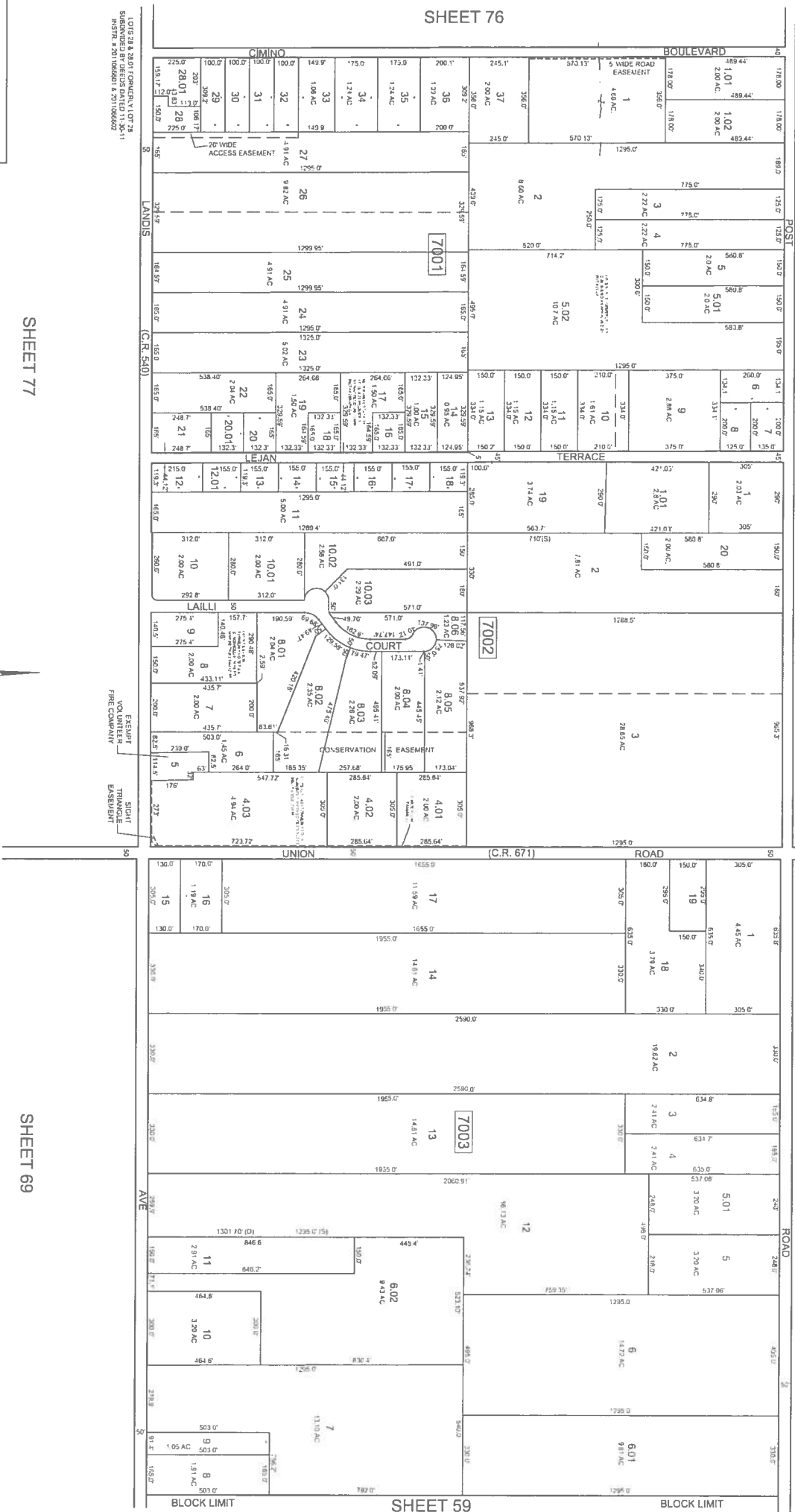


LOT 1, 1 & 1.02 FORMERLY LOT 1
 SUBDIVISION RECORD MAP 2002
 1989 BY CHRIS R. REHMANN 1:2500

SHEET 71

SHEET 58



SHEET 76

SHEET 77

SHEET 69

SHEET 59

REVISIONS

DATE	L.S. NAME	LIC. NO.
1/10/99	HOWARD A. TRAMBLE	CS 33461
9/21/95	HOWARD A. TRAMBLE	CS 33451

LOT 29 & 30, 61 FORMERLY LOT 28
 SUBDIVISION RECORD MAP 2002
 1989 BY CHRIS R. REHMANN 1:2500

LANDS (C.R. 540)

EXEMPT TRIANGLE EASEMENT

UNION (C.R. 671)

AVE

BLOCK LIMIT

THIS TAX MAP HAS BEEN DRAWN USING COMPUTER AIDED DRAFTING/
 DESIGN (CAD/D) AND COORDINATE GEOMETRY (COGO)

THIS SHEET IS A DIGITIZED COPY OF THE TAX MAP ORIGINALLY
 PREPARED BY CHRIS R. REHMANN DATED JANUARY 1989. THE
 ORIGINAL APPROVED MAP IS ON FILE IN THE OFFICE OF THE
 BUENA VISTA TOWNSHIP TAX ASSESSOR.

TAX MAP
 TOWNSHIP OF BUENA VISTA
 ATLANTIC COUNTY, NEW JERSEY
 SCALE: 1" = 200' DATE: JANUARY 1989

CHRIS R. REHMANN
 PROFESSIONAL ENGINEER & LAND SURVEYOR
 NEW JERSEY LICENSE NO. 1719
 6330 VERT COAST PIKE
 MANACTIONS (EVANSHAW 2007)