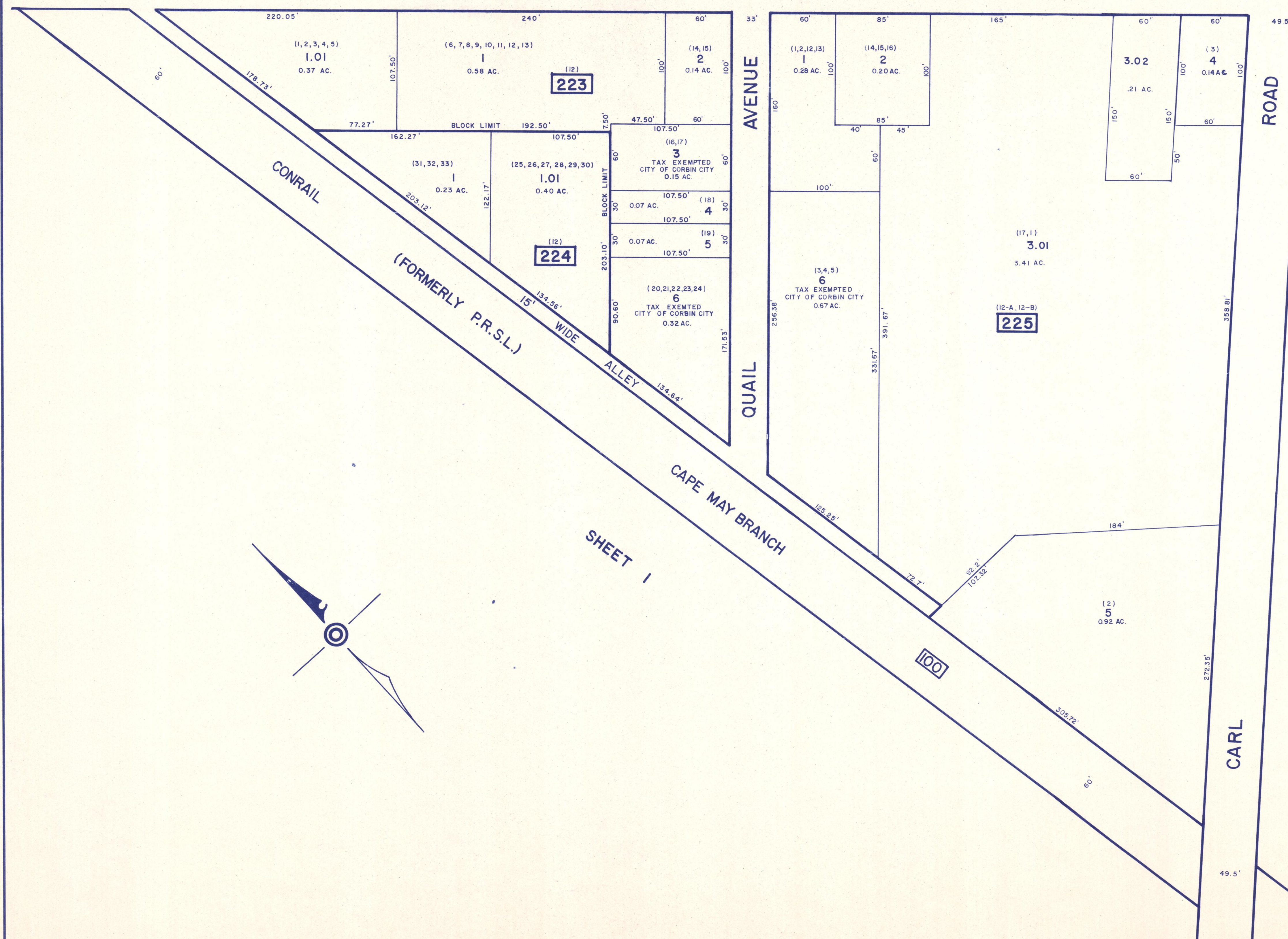


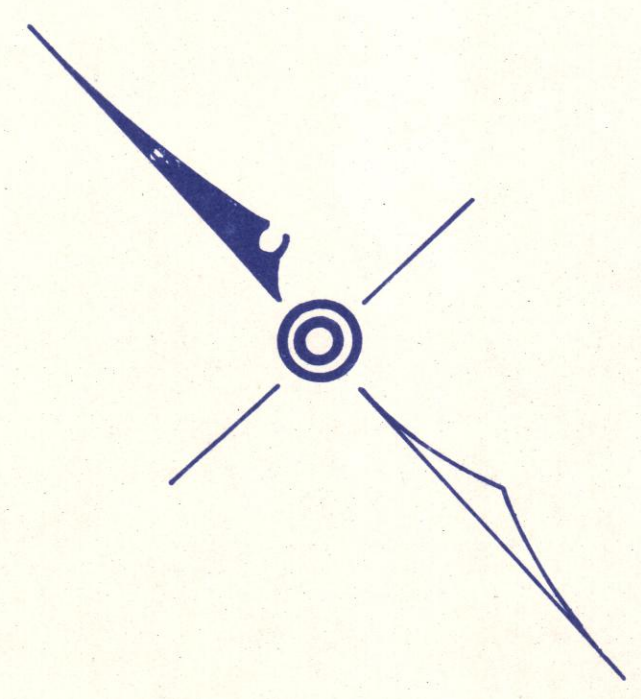
SHEET 2

CORBIN CITY - MILLVILLE ROAD OR HEAD OF RIVER ROAD

STATE HIGHWAY ROUTE 50



SHEET 2



SHEET 1

WPHA 6 - 7 - 94
 WPHA 4 - 25 - 89
 REVISIONS

NEW JERSEY DEPARTMENT OF THE TREASURY
 DIVISION OF TAXATION
 LOCAL PROPERTY AND PUBLIC UTILITY BRANCH
 APPROVED AS A TAX MAP PURSUANT TO THE
 PROVISIONS OF CHAPTER 125, LAWS OF 1915, *MC
 FOR THE DIRECTOR, DIVISION OF TAXATION
 BY: *J. H. Deane*
 P.E. & L.S.
 # 5009
 DATE: FEB 11 1976 SERIAL NO. 55

TAX MAP
CITY OF CORBIN CITY
 ATLANTIC COUNTY, NEW JERSEY
 SCALE: 1" = 50'
 JANUARY, 1975
 CHRIS R. REHMANN
 PROFESSIONAL ENGINEER & LAND SURVEYOR
 NEW JERSEY LICENSE NO. 17119
 850 WHITE HORSE PIKE
 HARMONTON, NEW JERSEY