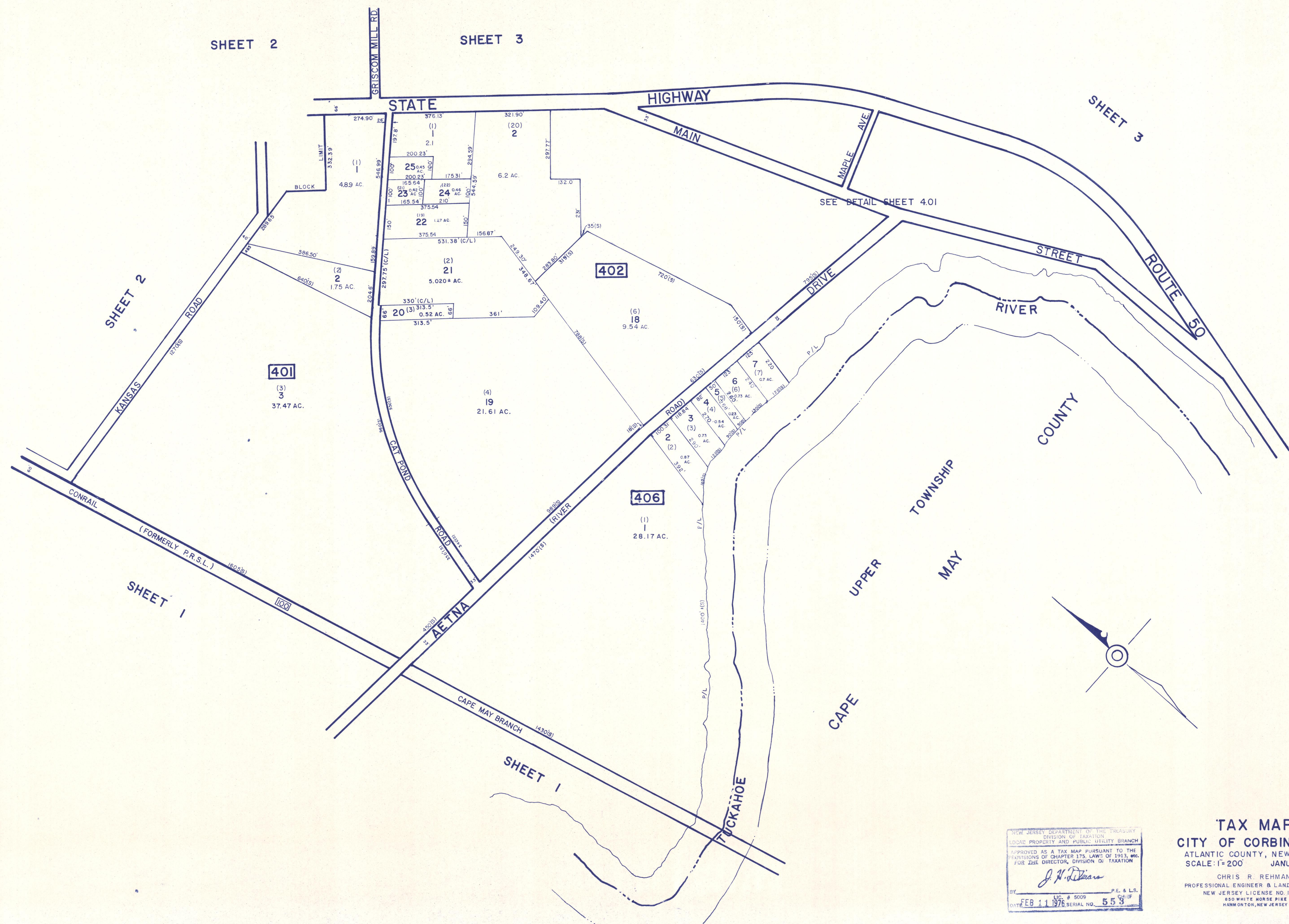


REVISIONS  
WPHA 6-23-93



SHEET 2

SHEET 3

SHEET 3

SHEET 2

SHEET 1

SHEET 1

NEW JERSEY DEPARTMENT OF THE TREASURY  
DIVISION OF TAXATION  
LOCAL PROPERTY AND PUBLIC UTILITY BRANCH  
APPROVED AS A TAX MAP PURSUANT TO THE  
PROVISIONS OF CHAPTER 175, LAWS OF 1913, ETC.  
FOR THE DIRECTOR, DIVISION OF TAXATION

*J. N. [Signature]*  
BY: P.E. & L.S.  
LIC. # 5009  
DATE: FEB 11 1976 SERIAL NO. 553

**TAX MAP**  
**CITY OF CORBIN CITY**  
ATLANTIC COUNTY, NEW JERSEY  
SCALE: 1"=200' JANUARY, 1975

CHRIS R. REHMANN  
PROFESSIONAL ENGINEER & LAND SURVEYOR  
NEW JERSEY LICENSE NO. 17119  
850 WHITE HORSE PIKE  
HAMMONTON, NEW JERSEY

